



U.S. Department of the Interior
Bureau of Land Management

John D. Dingell, Jr. Conservation, Management, and Recreation Act

Green River Wild & Scenic River Designation

What is it?

Overview of Section 1241

- 5.3 miles of the Green River was designated Wild from the Uintah and Ouray Reservation to the Nefertiti Boat Ramp.
- 8.5 miles of the Green River was designated Recreational from the Nefertiti boat ramp to the Swasey's Boat Ramp.
- 49.2 miles of the Green River was designated Scenic from Bull Bottom to the Emery County Line.



BLM Photo by Jonathan Moor

How does it impact me?

- Current recreation will continue.
- Valid existing rights will be honored.
- The BLM can authorize commercial services such as outfitting and guide activities.
- Development is prohibited in the wild segment, limited in the scenic segment, and allowed in the recreational segment so long as the outstanding remarkable values are preserved.

Next Steps

- The BLM will prepare a Management Plan.
- The BLM will coordinate with affected right of way owners, adjacent land owners and other affected parties.

How do I participate?

- Tell the BLM what you currently like to do in this area.
- Tell the BLM what activities you would like to do in the area in the future.
- Comment during the Management Plan scoping period and comment period.
- Submit additional thoughts or information to blm_ut_pr_comments@blm.gov

INTERESTING FACT

The BLM does not manage the river. The river, up to the average high water mark, is managed by Utah Forestry, Fire, and State lands.

www.blm.gov/dingell-act/utah



Green River Wild & Scenic River Designation

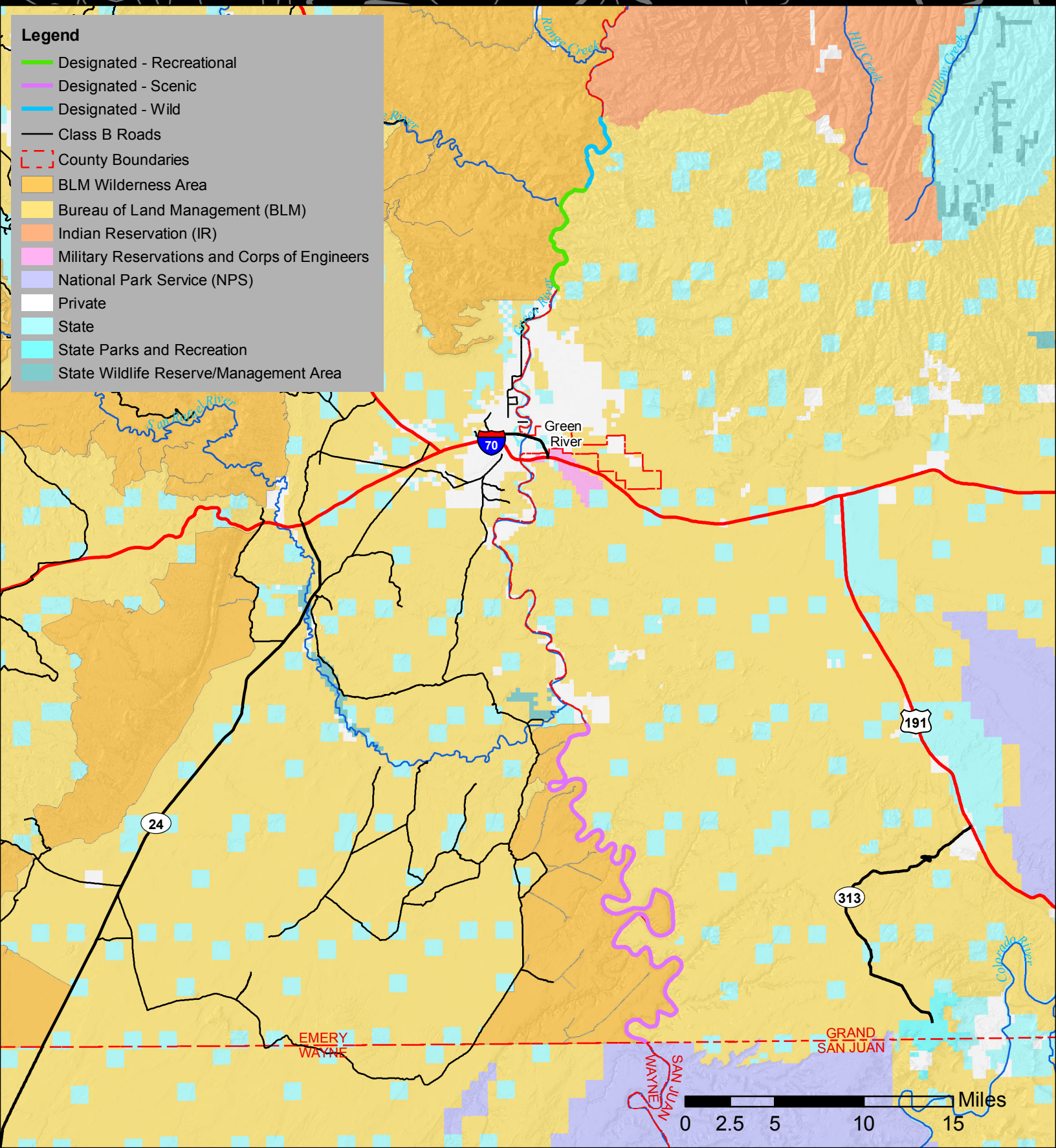
Price Field Office
125 S. 600 W.
Price, Utah 84501
435-636-3600



8/29/2019

No warranty is made by the Bureau of Land Management as to the accuracy, reliability, or completeness of these data for individual use or aggregate use with other data. Original data were compiled from various sources. This information may not meet National Map Accuracy Standards. This product was developed through digital means and may be updated without notification.

- Legend**
- Designated - Recreational
 - Designated - Scenic
 - Designated - Wild
 - Class B Roads
 - County Boundaries
 - BLM Wilderness Area
 - Bureau of Land Management (BLM)
 - Indian Reservation (IR)
 - Military Reservations and Corps of Engineers
 - National Park Service (NPS)
 - Private
 - State
 - State Parks and Recreation
 - State Wildlife Reserve/Management Area



Green River Wild and Scenic River Designation

THE LAW - Sec. 1241

(a) IN GENERAL.—Section 3(a) of the Wild and Scenic Rivers Act (16 U.S.C. 1274(a)) (as amended by section 1205(a)(5)(B)(i)) is amended by adding at the end the following:

“(224) GREEN RIVER.—The approximately 63-mile segment, as generally depicted on the map entitled ‘Emery County Public Land Management Act of 2018 Overview Map’ and dated December 11, 2018, to be administered by the Secretary of the Interior, in the following classifications:

“(A) WILD RIVER SEGMENT.—The 5.3-mile segment from the boundary of the Uintah and Ouray Reservation, south to the Nefertiti boat ramp, as a wild river.

“(B) RECREATIONAL RIVER SEGMENT.—The 8.5-mile segment from the Nefertiti boat ramp, south to the Swasey’s boat ramp, as a recreational river.

“(C) SCENIC RIVER SEGMENT.—The 49.2-mile segment from Bull Bottom, south to the county line between Emery and Wayne Counties, as a scenic river.”.

(b) INCORPORATION OF ACQUIRED Non-Federal Land.—If the United States acquires any non-Federal land within or adjacent to a river segment of the Green River designated by paragraph (224) of section 3(a) of the Wild and Scenic Rivers Act (16 U.S.C. 1274(a)) (as added by subsection (a)), the acquired land shall be incorporated in, and be administered as part of, the applicable wild, scenic, or recreational river.