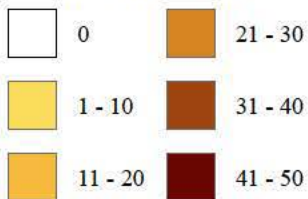




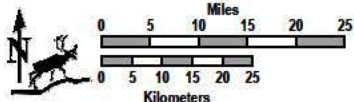
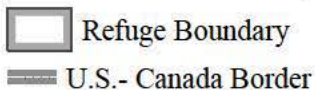
Arctic National Wildlife Refuge

Frequency of Occurrence of Snow Goose Flocks with >500 birds Observed During Aerial Surveys, 1982-2004

Number Flocks

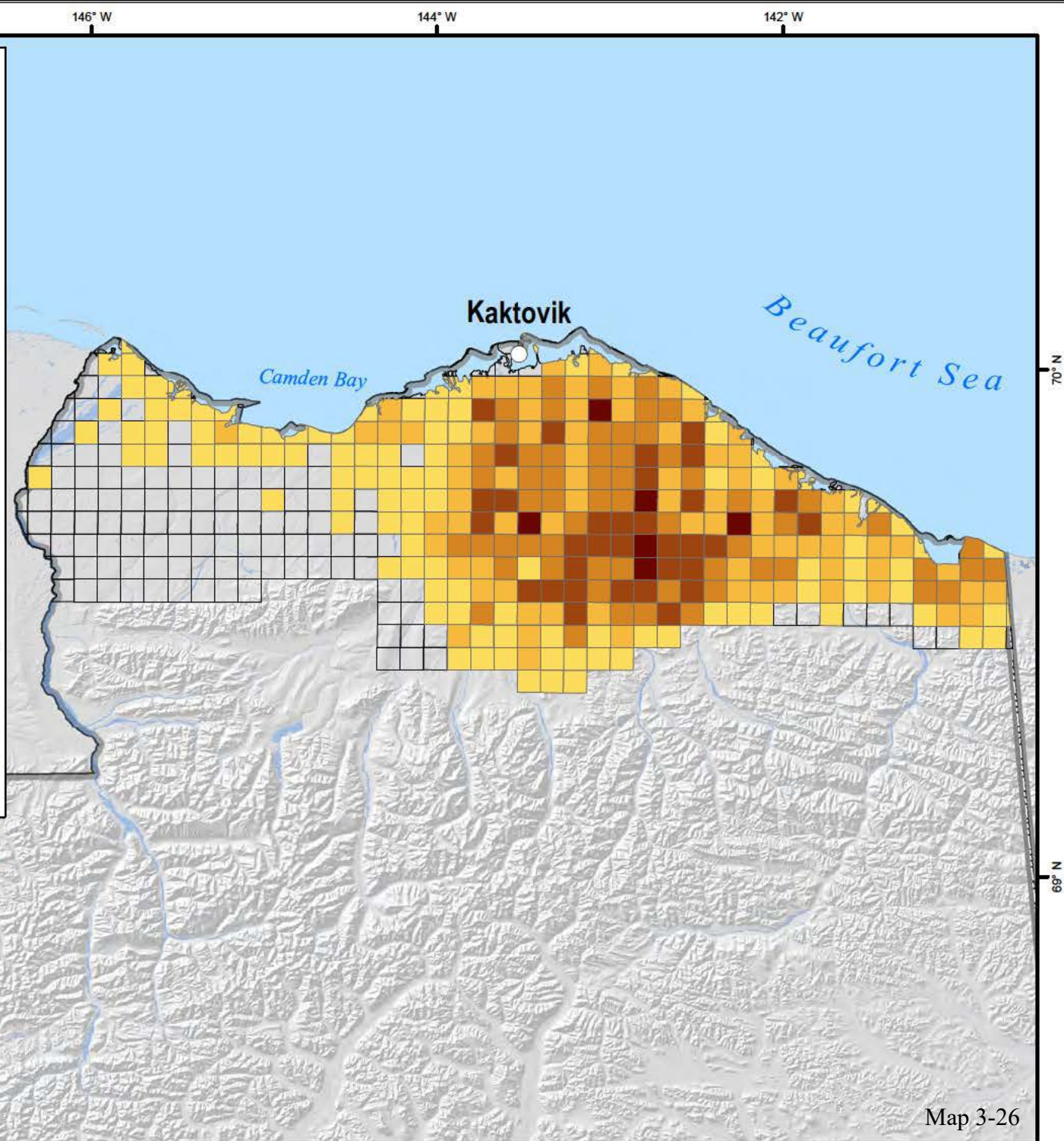


Other Features



Alaska Albers Equal Area Conic Projection, 1983 North American Datum.

Aerial surveys were conducted between 1982 and 2004 to census the number of snow geese staging on the Arctic Refuge coastal plain prior to their fall migration. The figure shows the numbers of flocks with greater >500 birds observed within 5 km x 5 km grid cells covering the survey area. Surveys were conducted in 1982, 1984-89, 1992-93, 1997-99, 2000-01, and 2003-04.



Map 3-26