

U.S. Department of the Interior
Bureau of Land Management

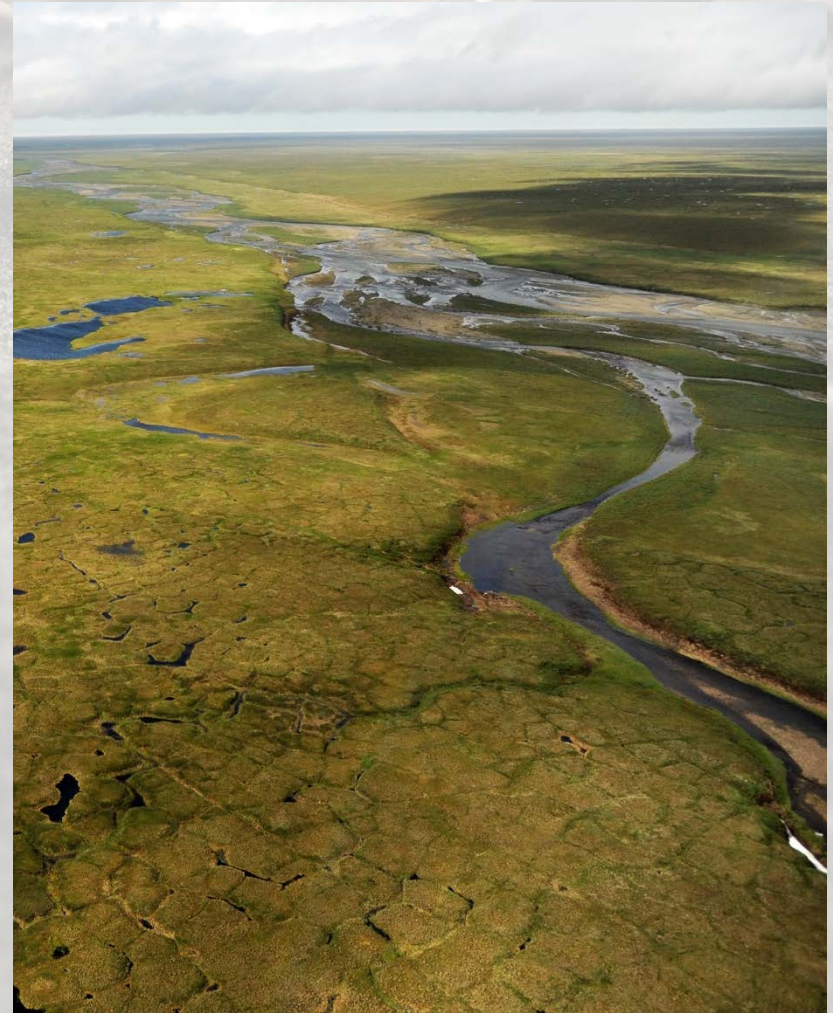
Coastal Plain Oil and Gas Leasing Program Draft Environmental Impact Statement





Meeting Overview

- Overview of the NEPA Process
- Presentation of Draft EIS
- Leasing Program
 - How to read the document
 - Resource analysis
 - Alternatives
 - How to comment on the Draft
- Overview of the ANILCA 810 Preliminary Evaluation
- Public Comment





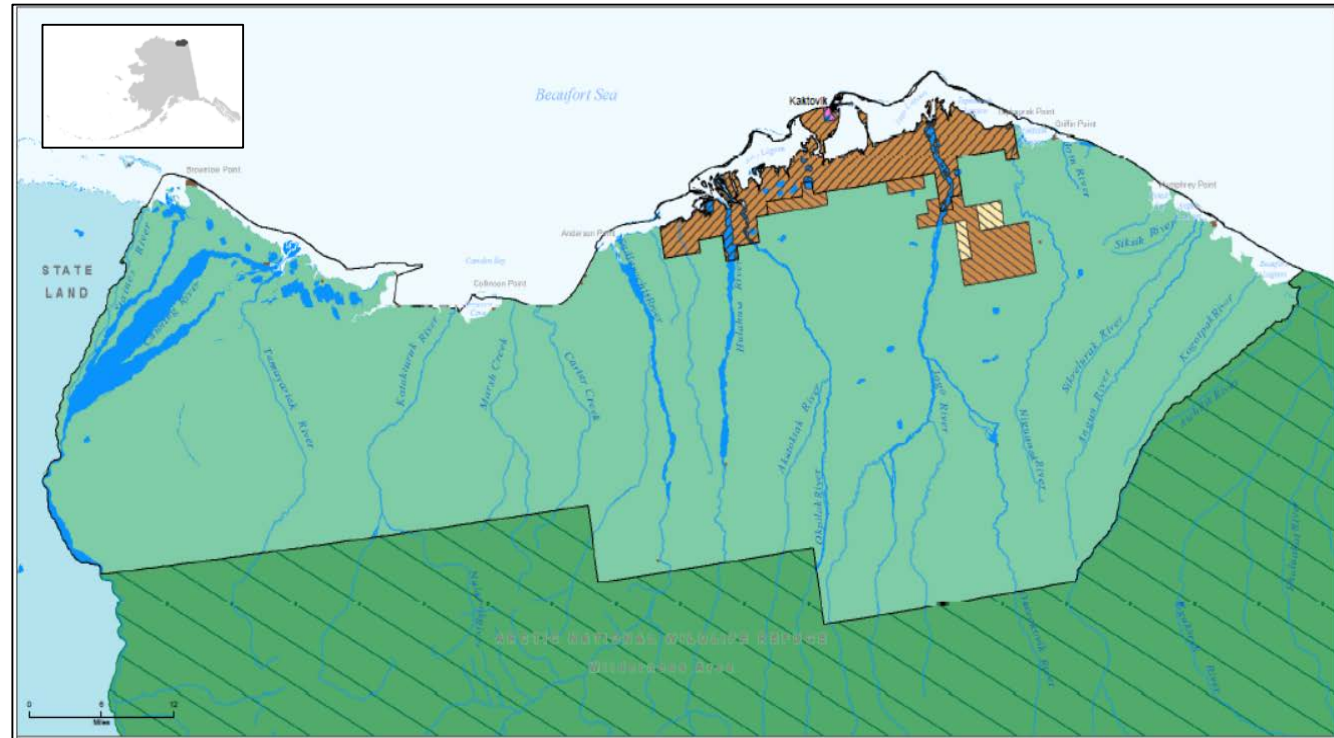
Public Law 115-97

(December 22, 2017)

- Requires the BLM to implement an oil and gas leasing program in the Coastal Plain of the Arctic National Wildlife Refuge
 - Requires at least two lease sales by 2024
 - Each sale offers a minimum of 400,000 acres
 - Allows up to a total of 2,000 surface acres of infrastructure

Coastal Plain - Program Area

- 1.56 million acres within the Arctic National Wildlife Refuge
- Native-selected and -conveyed lands included within program area boundary, but outside BLM's authority



- U.S. Fish and Wildlife Service
- U.S. Fish and Wildlife Service, wilderness area
- Native-conveyed
- Native-selected
- State
- Native allotment
- Air Force

Public Law 115-97 Coastal Plain

Outside BLM's oil and gas leasing authority:

- Excluded from Public Law 115-97 Coastal Plain
- Native or other mineral ownership



Agency Responsibilities for Coastal Plain Leasing EIS

- Bureau of Land Management
 - Lead Federal agency for EIS
 - Administers leasing program
- US Fish and Wildlife Service
 - Administers surface of Arctic National Wildlife Refuge
 - Cooperating Agency



BLM Oil and Gas Leasing and Development Process

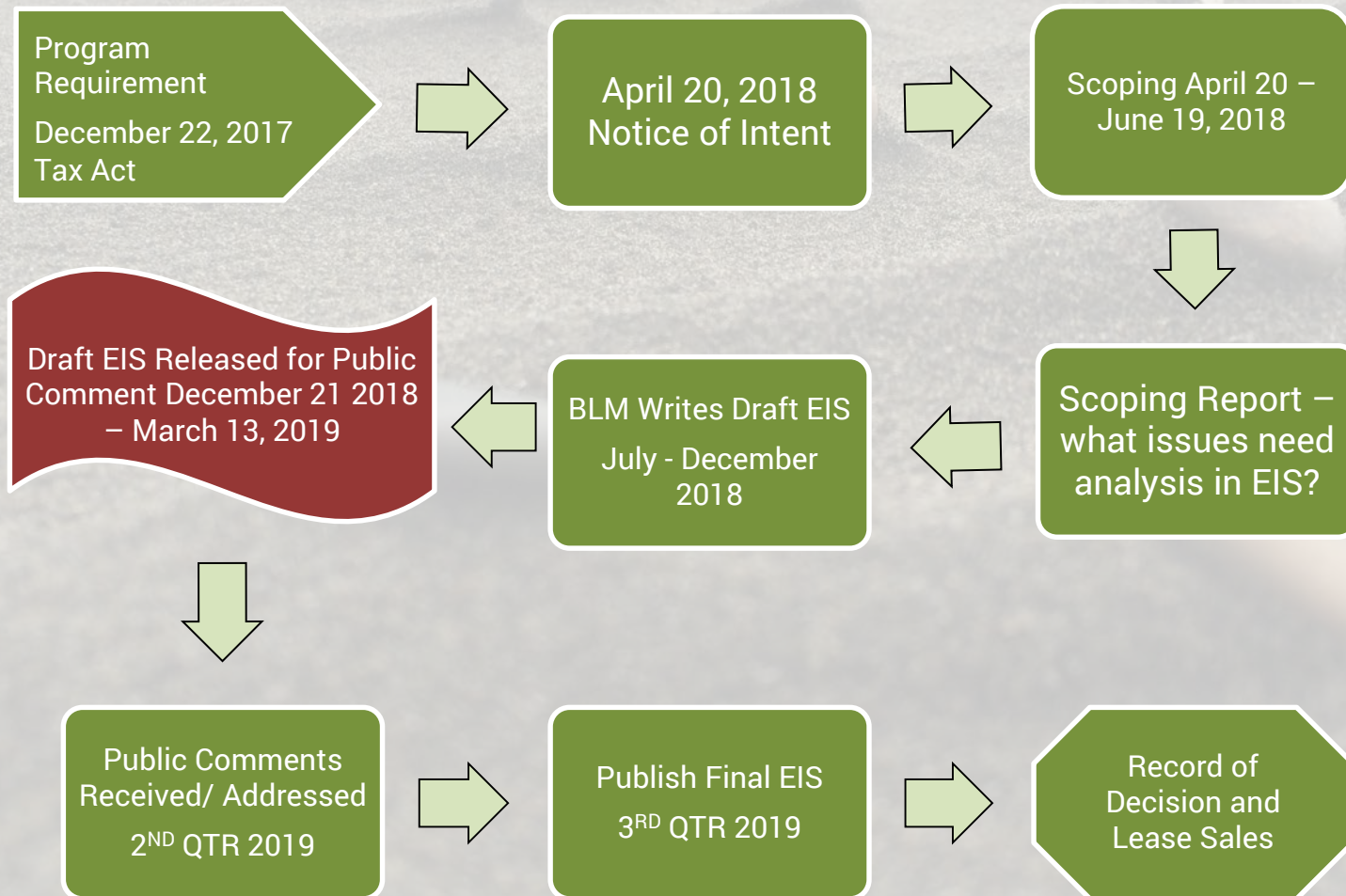
- **Leasing (EIS, Sales, Lease Issuance)**
- Geophysical Exploration (pre and post lease)
- Applications for Permits to Drill
 - Drilling Exploration
 - Development
- Operations and Production
- Inspection and Enforcement
- Reclamation



Note: Any on-the-ground activities will require separate NEPA analysis and would not be authorized as a result of this EIS



National Environmental Policy Act





Cooperating Agencies

US Fish and Wildlife Service

US Environmental Protection Agency

State of Alaska

North Slope Borough

Native Village of Kaktovik

Native Village of Venetie Tribal Government

Venetie Village Council

Arctic Village Council



Organization of the Draft EIS

VOLUME I

- Executive Summary
- Chapter 1. Introduction
- Chapter 2. Alternatives
- Chapter 3. Affected Environment and Environmental Consequences

VOLUME II

- Supporting Appendices





What we heard so far...

Subsistence

- Impacts on access to traditional subsistence use areas
- Impacts on subsistence resources like the Porcupine Caribou Herd and Central Arctic Herd caribou, fish, waterfowl, and plants
- Competition for subsistence resources
- Impacts to habitat used by subsistence resources

Economy and Sociocultural Systems

- Economic changes (local, North Slope Borough, state)
 - Changes in employment levels and income
 - Tax revenue potential from increased consumerism
- Influx of non-resident temporary workers
- Spiritual and cultural importance of the Coastal Plain and Porcupine caribou herd calving grounds



What we heard so far...

Terrestrial Mammals

- Porcupine and Central Arctic caribou herd use of the program area
- Habitat loss and alteration
- Behavioral disturbance and displacement
- Injury or mortality

Marine Mammals

- Polar bear critical habitat and denning habitat
- Polar bear attraction to human activity and facilities
- Whales and seals



How does it all inform alternatives?

Alternative	Description
A (No Action)	Alternative A would not comply with the directive under PL 115-97; however, Alternative A is being carried forward to provide a baseline for comparing impacts from the action alternatives
B	Entire program area could be offered for lease sale; fewest acres with no surface occupancy (NSO) stipulations; several required operating procedures (ROPs) would apply to oil and gas activities to reduce impacts
C	Entire program area could be offered for lease sale; the BLM would rely on the same ROPs as Alternative B, but would apply more NSO stipulations
D1/D2	Portions of the program area would not be offered for lease sale; greatest acres with NSO stipulations; in some instances, more prescriptive ROPs are required

A preferred alternative will be identified in the Final EIS.



Alternative Comparison by Acreage

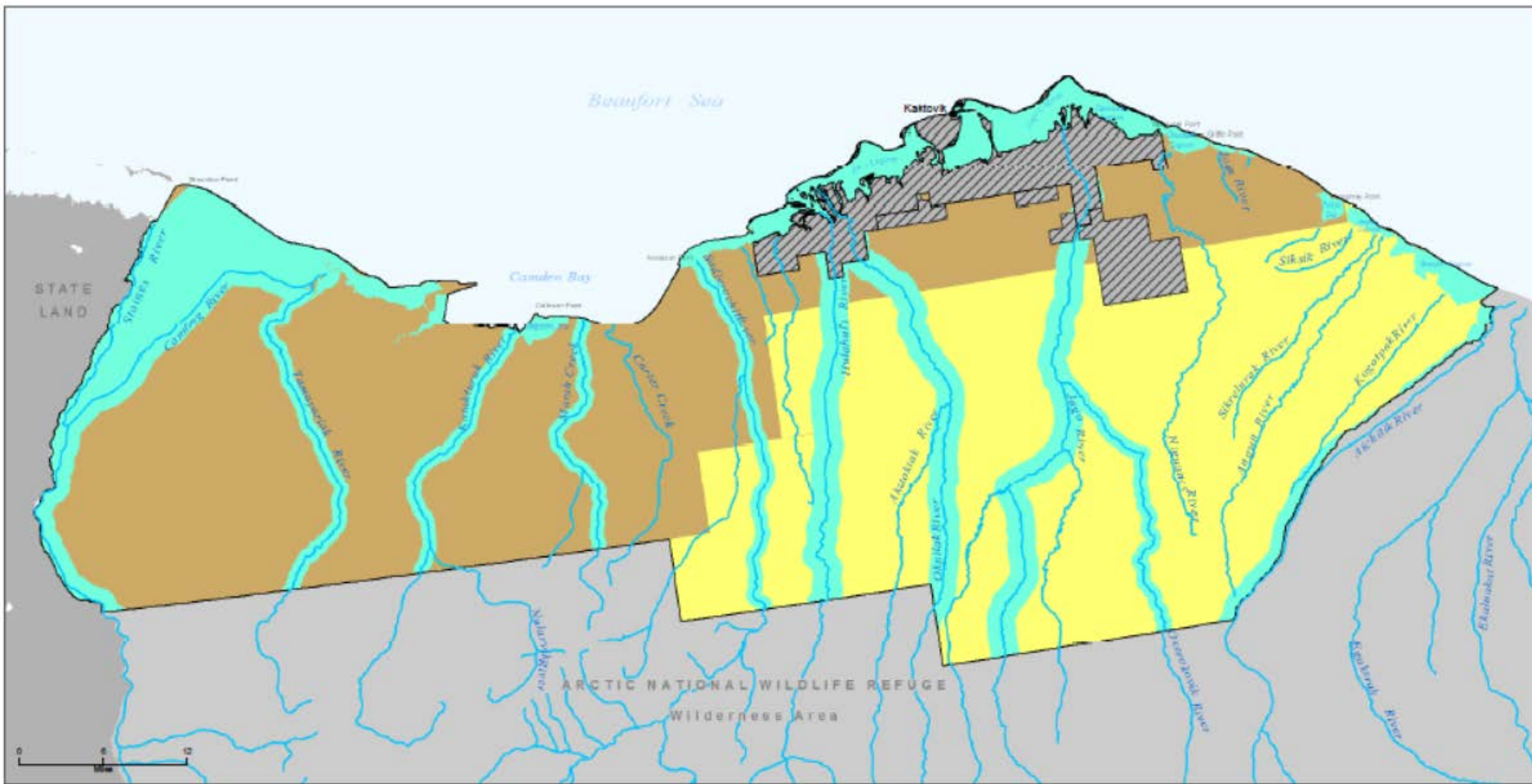
Type of Lease Sale	Alternative (Acres)			
	B	C	D1	D2
Not offered for lease sale	0	0	526,300	526,300
Available for lease sale	-	-	-	-
Subject to no surface occupancy (NSO)	359,400	932,500	708,600	708,600
Subject to controlled surface use (CSU)	0	0	123,900	123,900
Subject to timing limitations (TL)	585,400	317,100	0	204,700
Subject to standard terms and conditions	618,700	313,900	204,700	0
Total available for lease sale	1,563,500	1,563,500	1,037,200	1,037,200

Source: BLM GIS 2018

NSO: No surface occupancy
TL: Timing limitation



Alternative B



- ☒ Public Law 115-97 Coastal Plain
Excluded from Public Law 115-97
- ☒ Coastal Plain or outside the BLM's
oil and gas leasing authority

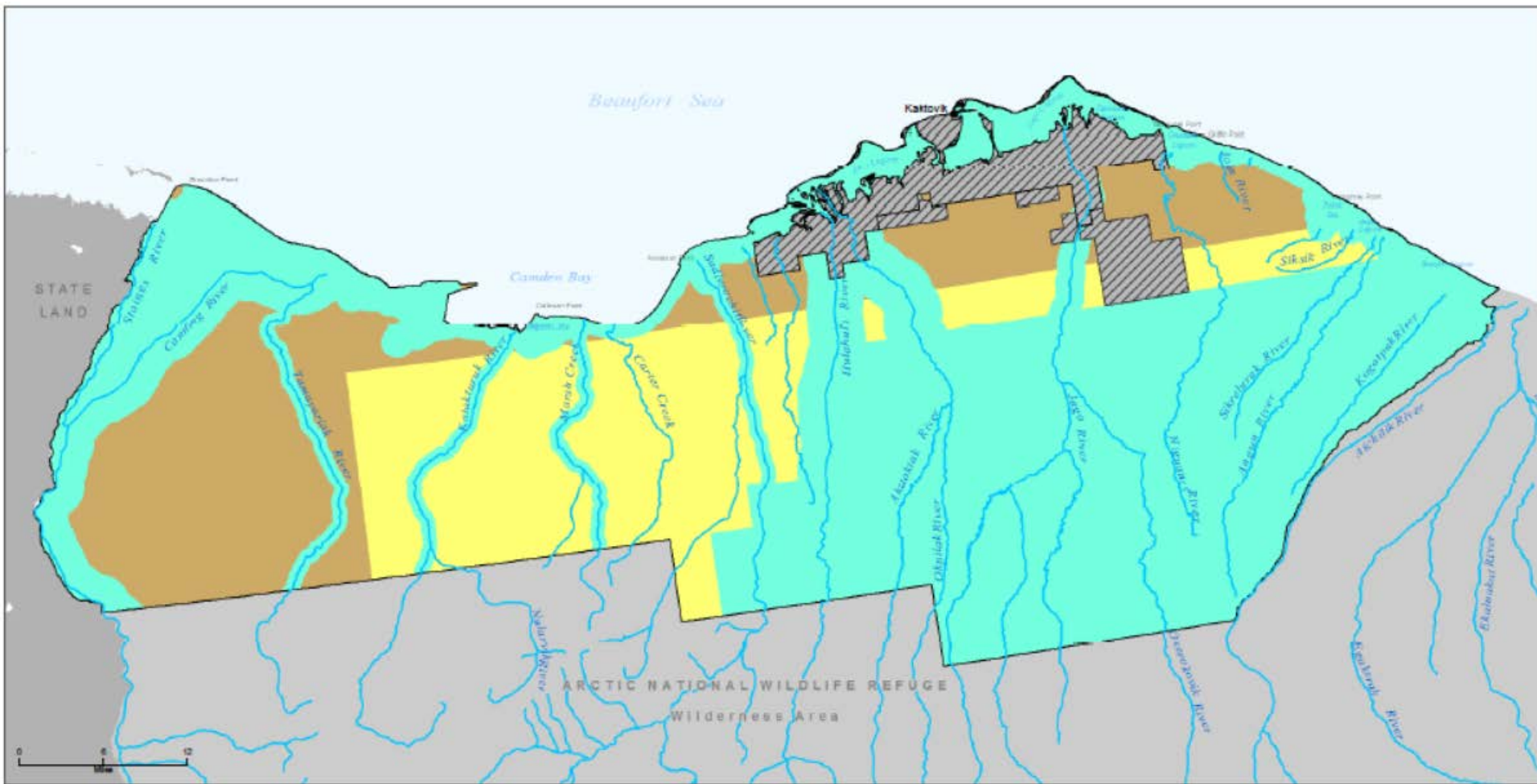
Available for lease sale:

- Subject to no surface occupancy
- Subject to controlled surface use (none)
- Subject to timing limitations
- Subject to only standard terms and conditions

■ Not offered for lease sale (none)



Alternative C



- ☒ Public Law 115-97 Coastal Plain
Excluded from Public Law 115-97
- ☒ Coastal Plain or outside the BLM's
oil and gas leasing authority

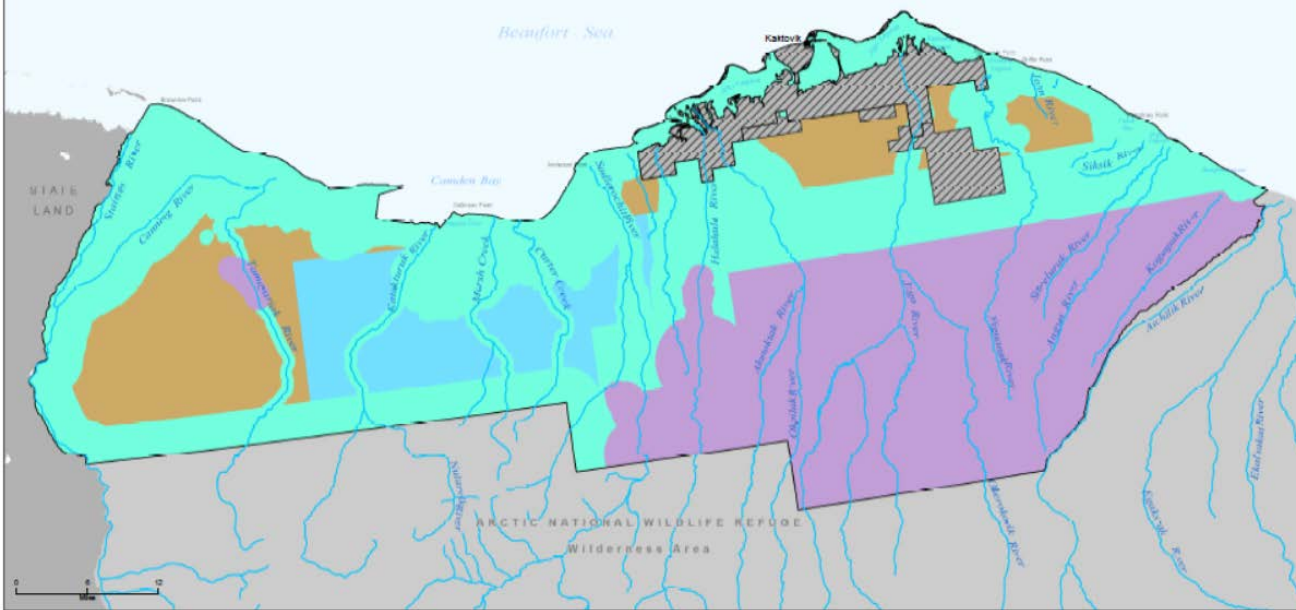
Available for lease sale:

- Subject to no surface occupancy
- Subject to controlled surface use (none)
- Subject to timing limitations
- Subject to only standard terms and conditions

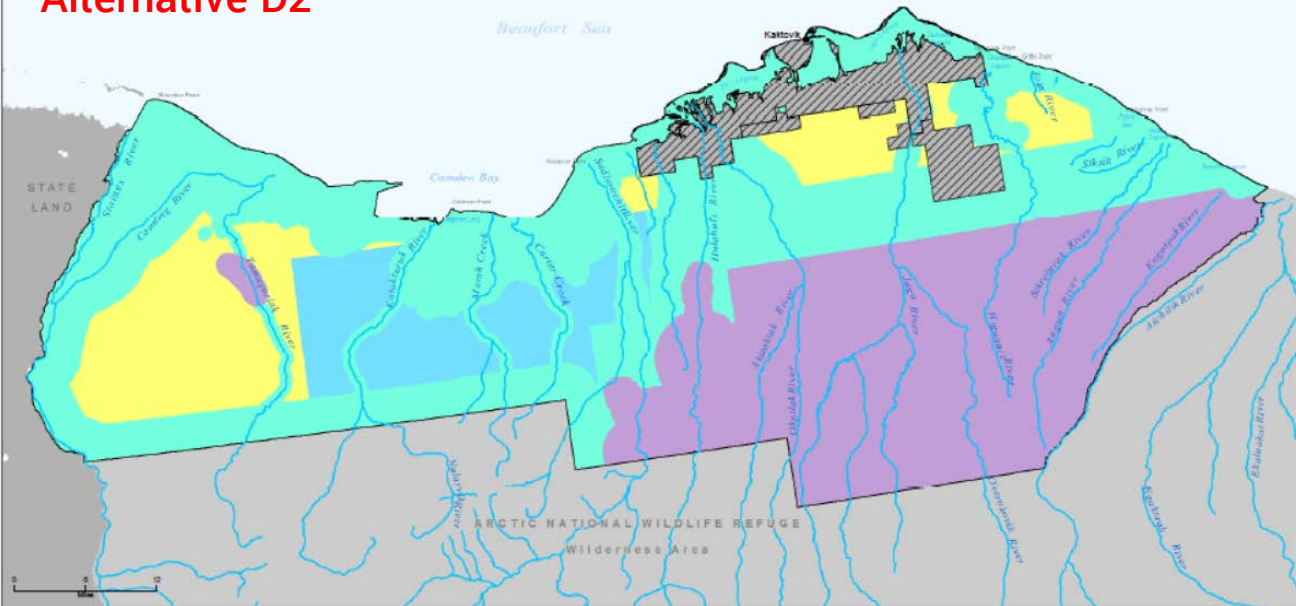
■ Not offered for lease sale (none)










Alternative D1



Alternative D2



Alternatives D1 and D2

-  Public Law 115-97 Coastal Plain
-  Excluded from Public Law 115-97 Coastal Plain or outside the BLM's oil and gas leasing authority
-  Not offered for lease sale
-  Subject to no surface occupancy
-  Subject to controlled surface use
-  Subject to timing limitations (none for D1)
-  Subject to only standard terms and conditions (none for D2)



Subsistence: ANILCA 810 Analysis

Briefly, subsection 810(a) may require up to four steps. These steps are:

1. An evaluation: access, availability, and abundance
2. A finding of whether or not a proposed action may cause significant restriction on subsistence uses;
3. Notice and hearing, if an action may have a significant restriction on subsistence uses; and
4. If there may be a significant restriction on subsistence uses, a three-part determination must be made before the action may be authorized.





Public Meetings – February 2019

Fairbanks – February 4

Kaktovik – February 5

Utqiagvik – February 6

Fort Yukon – February 7

Arctic Village – February 9

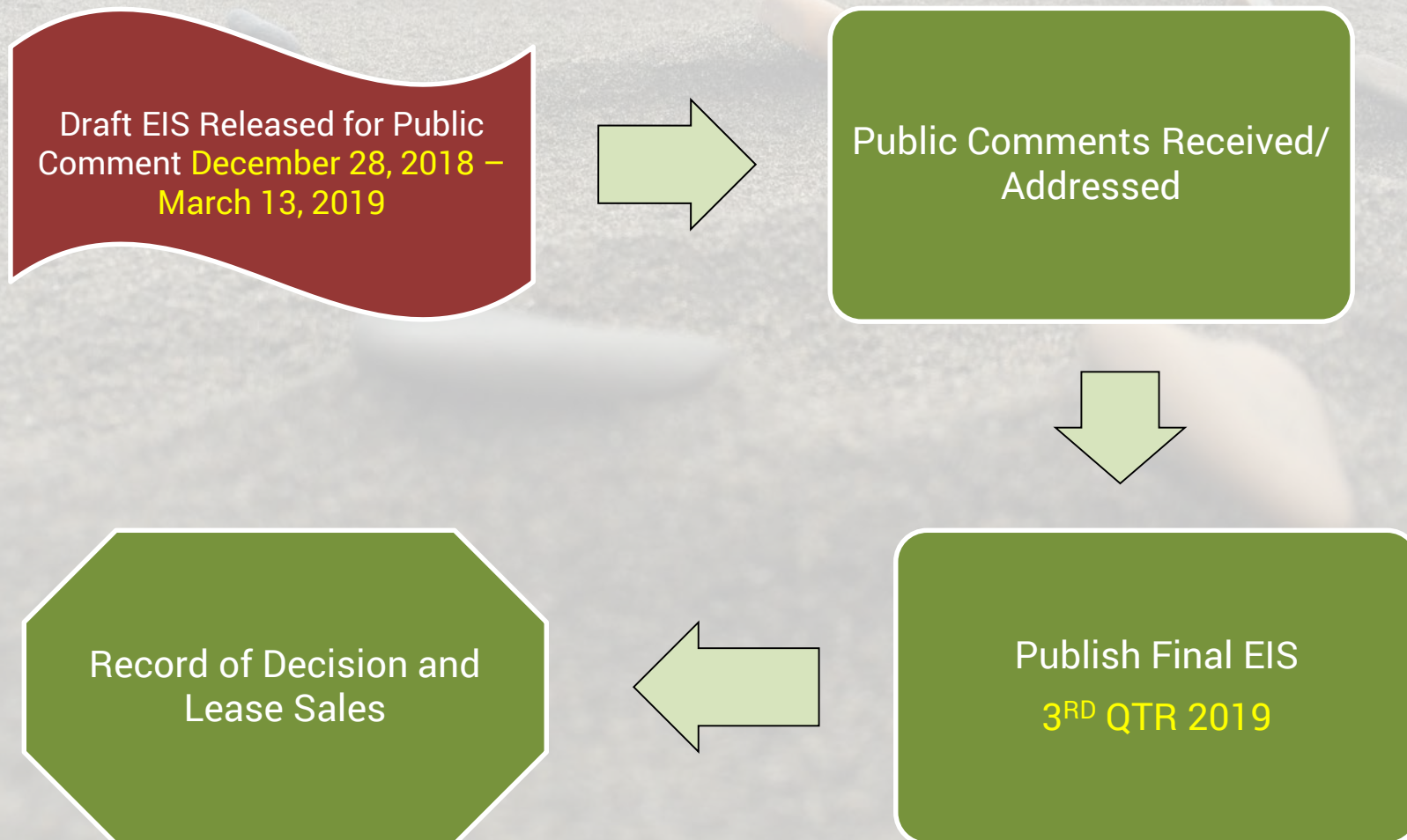
Venetie – February 10

Anchorage – February 11

Washington, DC – February 13



Next Steps





How to Provide Comments

Comment Form Submit via project website or mail to the address below

**Project
Website**

www.blm.gov/alaska/coastal-plain-eis

Mail

Attn: Coastal Plain Oil and Gas Leasing Program EIS
222 West 7th Avenue, #13
Anchorage, AK 99513

Comments accepted December 21, 2018 through March 13, 2019