



U.S. Department of the Interior
Bureau of Land Management

U.S. Department of the Interior
Bureau of Indian Affairs



BLM and BIA Farmington Mancos-Gallup Resource Management Plan Amendment and Environmental Impact Statement (FMG RMPA/EIS)

BLM and BIA Welcome you to the Farmington Mancos-Gallup Resource Management Plan Amendment and Environmental Impact Statement (FMG RMPA/EIS)

Virtual Public Meeting



U.S. Department of the Interior
Bureau of Land Management

U.S. Department of the Interior
Bureau of Indian Affairs



BLM and BIA Farmington Mancos-Gallup Resource Management Plan Amendment and Environmental Impact Statement (FMG RMPA/EIS)

BLM and BIA Welcome you to the Farmington Mancos-Gallup Resource Management Plan Amendment and Environmental Impact Statement (FMG RMPA/ EIS) Virtual Public Meeting



U.S. Department of the Interior
Bureau of Land Management

U.S. Department of the Interior
Bureau of Indian Affairs



BLM and BIA Farmington Mancos-Gallup Resource Management Plan Amendment and Environmental Impact Statement (FMG RMPA/EIS)

BLM and BIA Welcome you to the Farmington Mancos-Gallup Resource Management Plan Amendment and Environmental Impact Statement (FMG RMPA/EIS)

Virtual Public Meeting



U.S. Department of the Interior
Bureau of Land Management

U.S. Department of the Interior
Bureau of Indian Affairs



BLM and BIA Farmington Mancos-Gallup Resource Management Plan Amendment and Environmental Impact Statement (FMG RMPA/EIS)

BLM and BIA Welcome you to the Farmington Mancos-Gallup Resource Management Plan Amendment and Environmental Impact Statement (FMG RMPA/EIS)

Virtual Public Meeting



U.S. Department of the Interior
Bureau of Land Management

U.S. Department of the Interior
Bureau of Indian Affairs



BLM and BIA Farmington Mancos-Gallup Resource Management Plan Amendment and Environmental Impact Statement (FMG RMPA/EIS)

An aerial photograph of a vast desert canyon landscape. The foreground shows rugged, eroded rock formations in shades of tan, brown, and white. The middle ground features a prominent, dark, jagged rock formation. The background extends to a flat desert floor with distant mountains under a clear blue sky. A semi-transparent dark rectangle is centered over the middle ground, containing the text "Moment of Silence" in white.

Moment of Silence



Agenda

- Welcome
- Meeting Logistics
- Presentation
 - Introductions
 - Purpose of the Meeting
 - NEPA/EIS Process and Overview
 - Project Overview
 - Next Steps
- Public Comments and Statements



Purpose of the Meeting

- Provide information about the RMPA/EIS document.
- Provide an opportunity for the public to provide written or verbal comments on the RMPA/EIS.

This process allows the agencies the opportunity to collect important public input through verbal or written comments to incorporate into the draft RMPA/EIS document.

Written comments accepted via the ePlanning website, mail, or voicemail. Verbal comments will be accepted after the presentation.





PROJECT OVERVIEW

- BLM and BIA are preparing the RMPA/EIS due to changing oil and gas development patterns
- The BLM will use this EIS to consider amending decisions in the 2003 RMP related to impacts of oil and gas development, rights-of-way, lands with wilderness characteristics, and vegetation
- The BLM's 2003 RMP is still valid; this amendment will provide the agency with additional management tools within the decision space defined for the RMPA EIS
- The BIA will be using this EIS to evaluate alternatives and resource impacts related to its authority over mineral leasing and associated activity decisions within the planning area





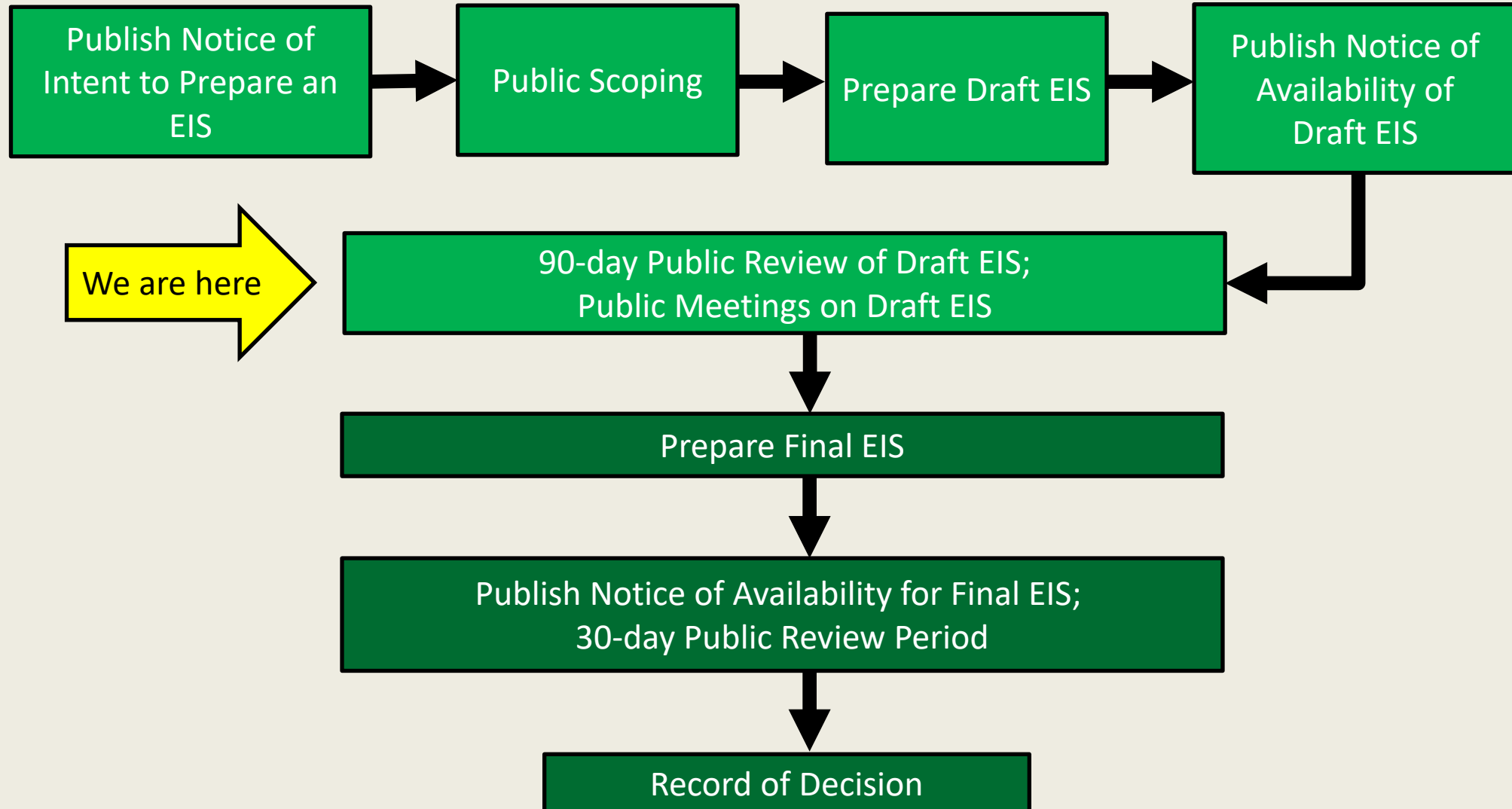
EIS Team and Roles



- Lead Agency and Federal Manager
 - Bureau of Land Management:
Sarah Scott, Project Manager
 - Bureau of Indian Affairs:
Robert Begay, Project Manager
- Interdisciplinary Team
- 23 Cooperating Agencies/Consulting Parties



NEPA Process





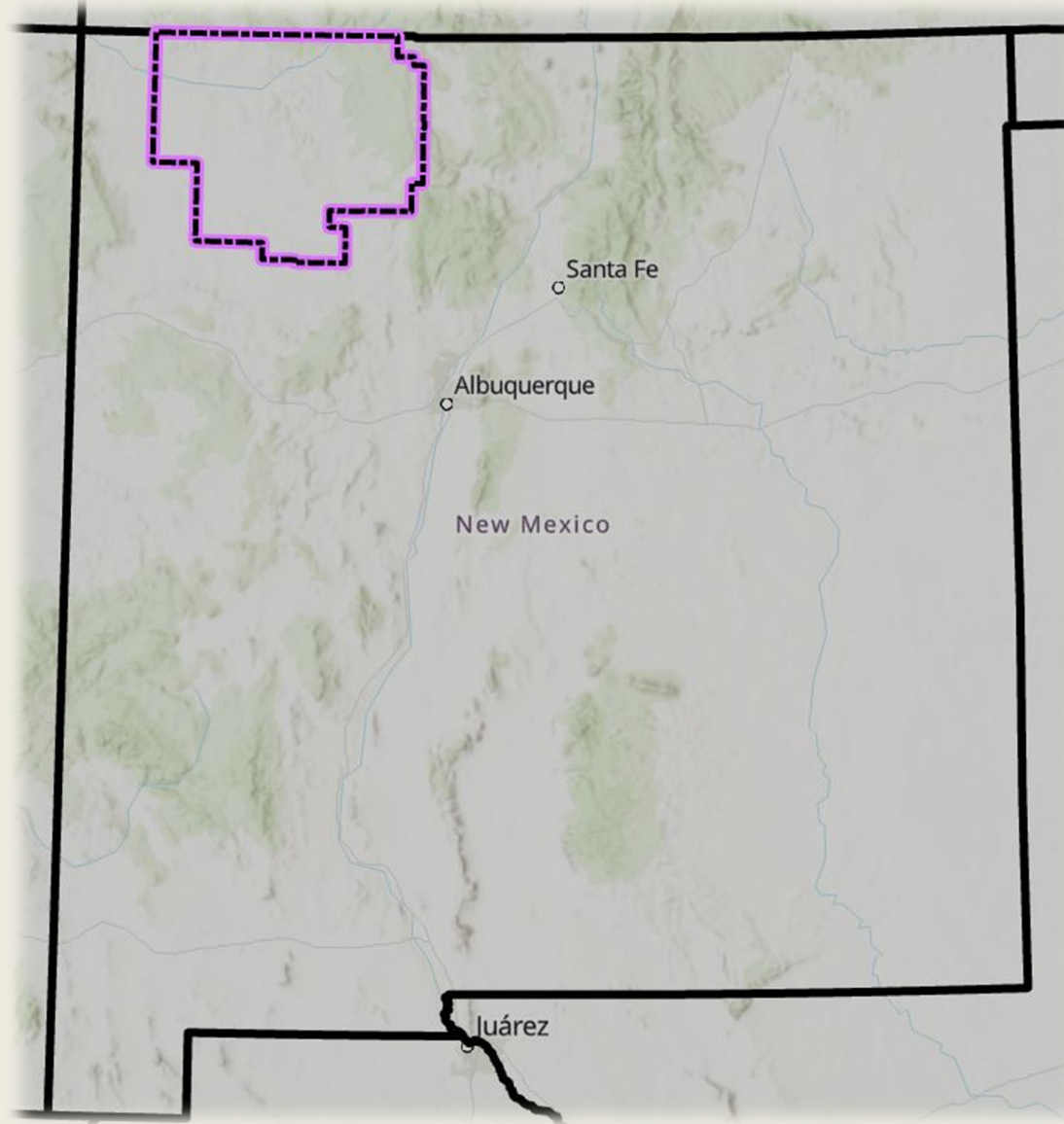
What is included in the Draft EIS

- **Volume 1:** Draft EIS and Index
- **Volume 2:** Appendices
- **Volume 3:** Supporting Report – Affected Environment
- **Volume 4:** Supporting Report – Environmental Consequences



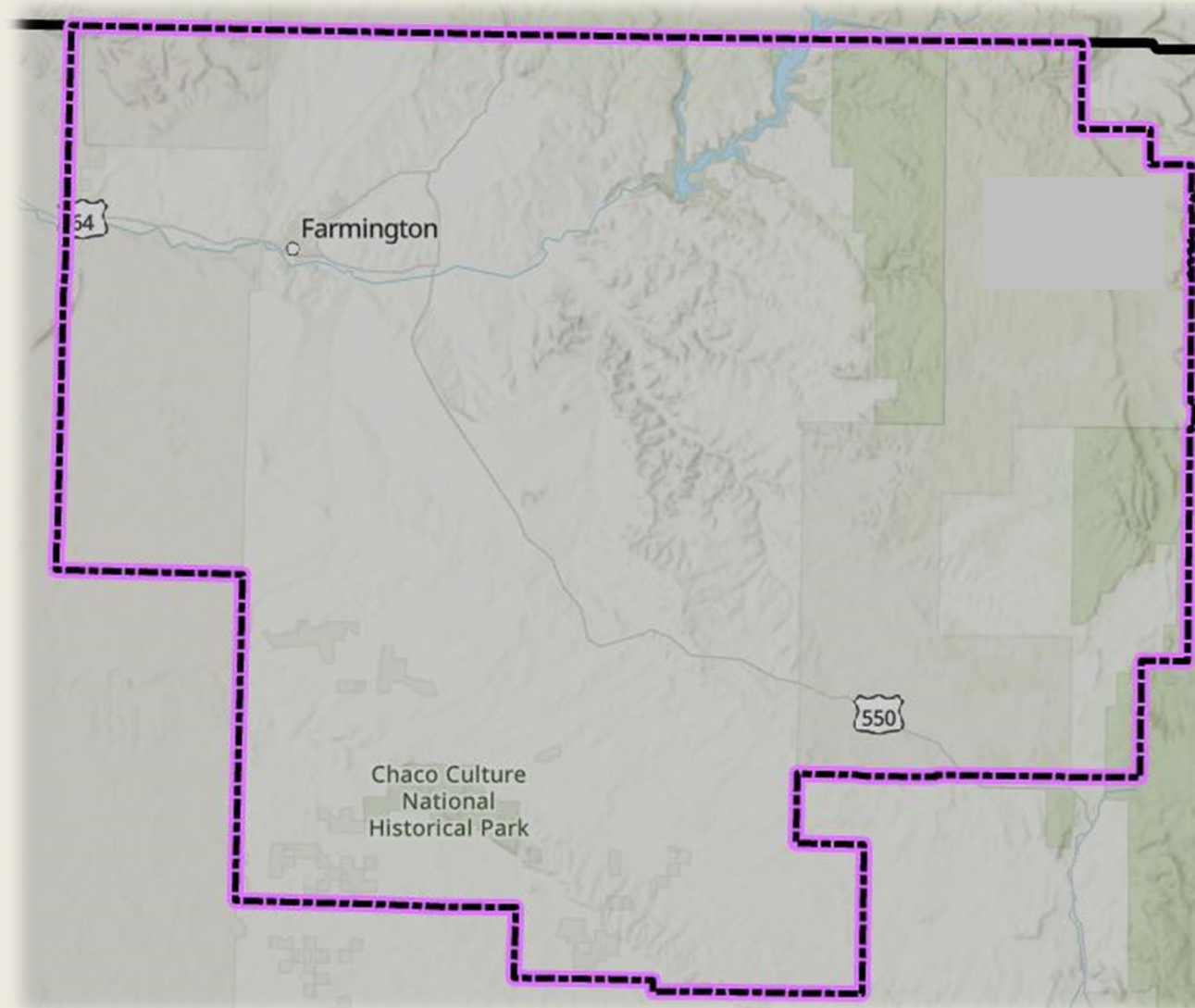


Defining the Planning and Decision Areas



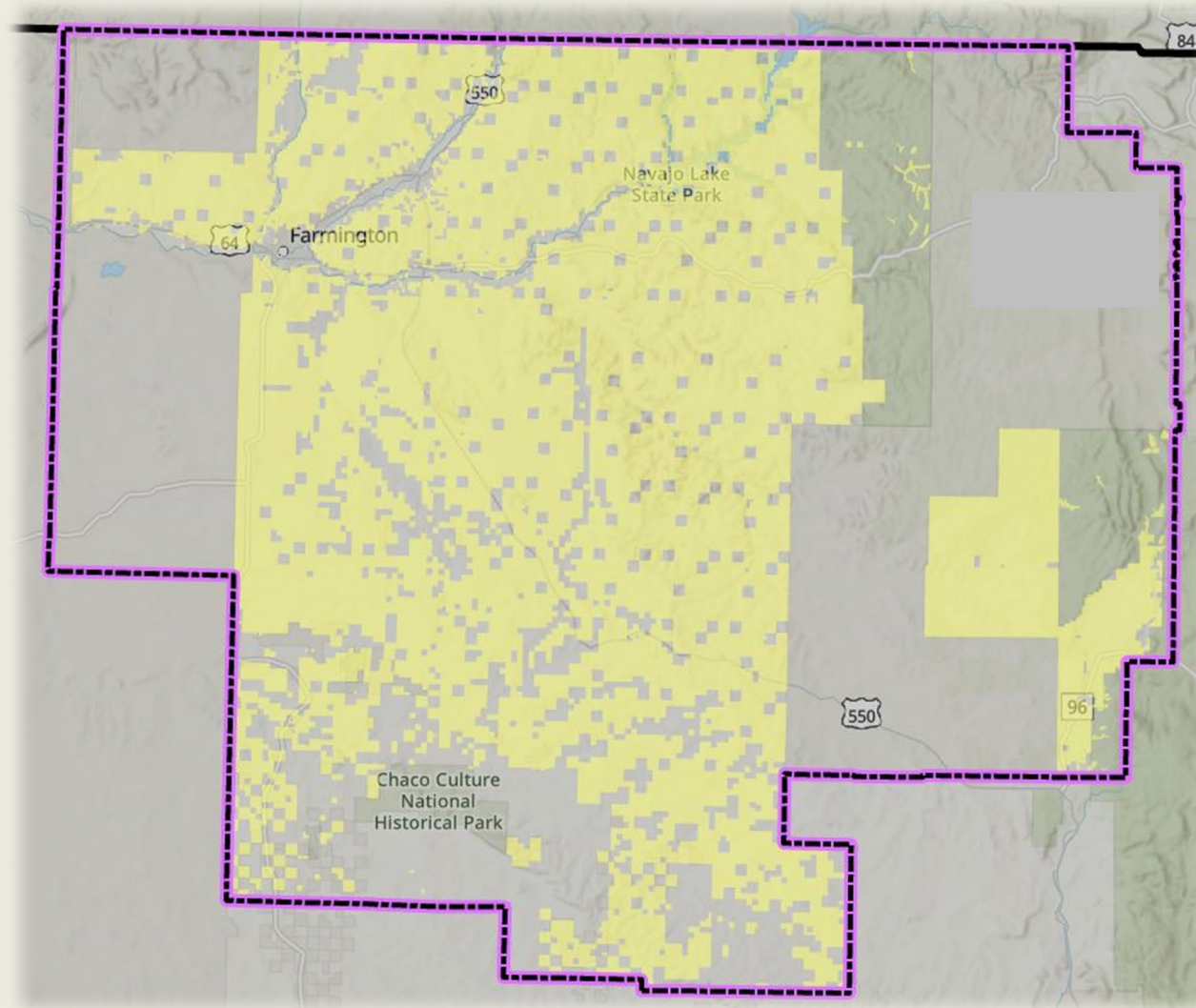


Defining the Planning and Decision Areas



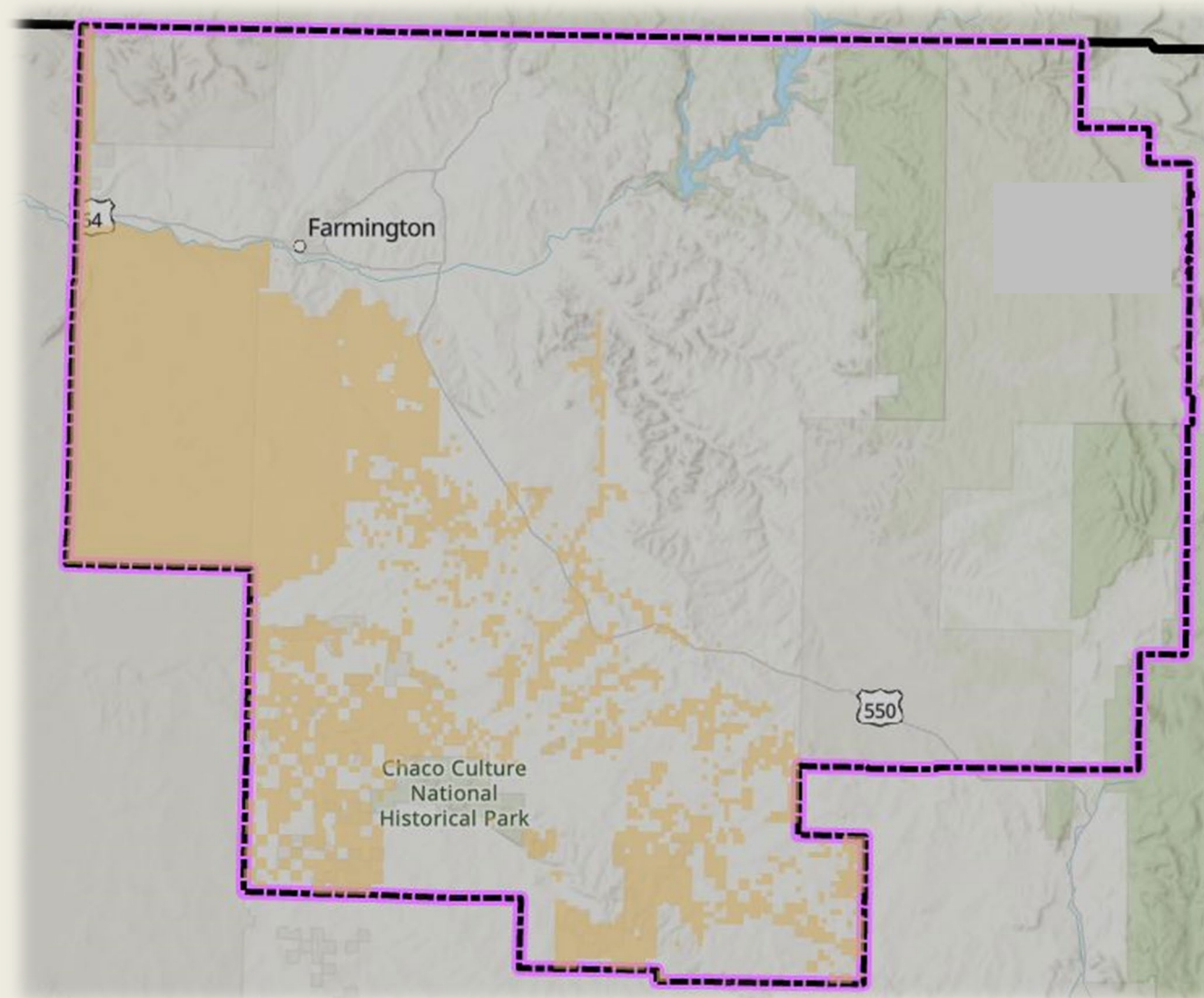


BLM Decision Area



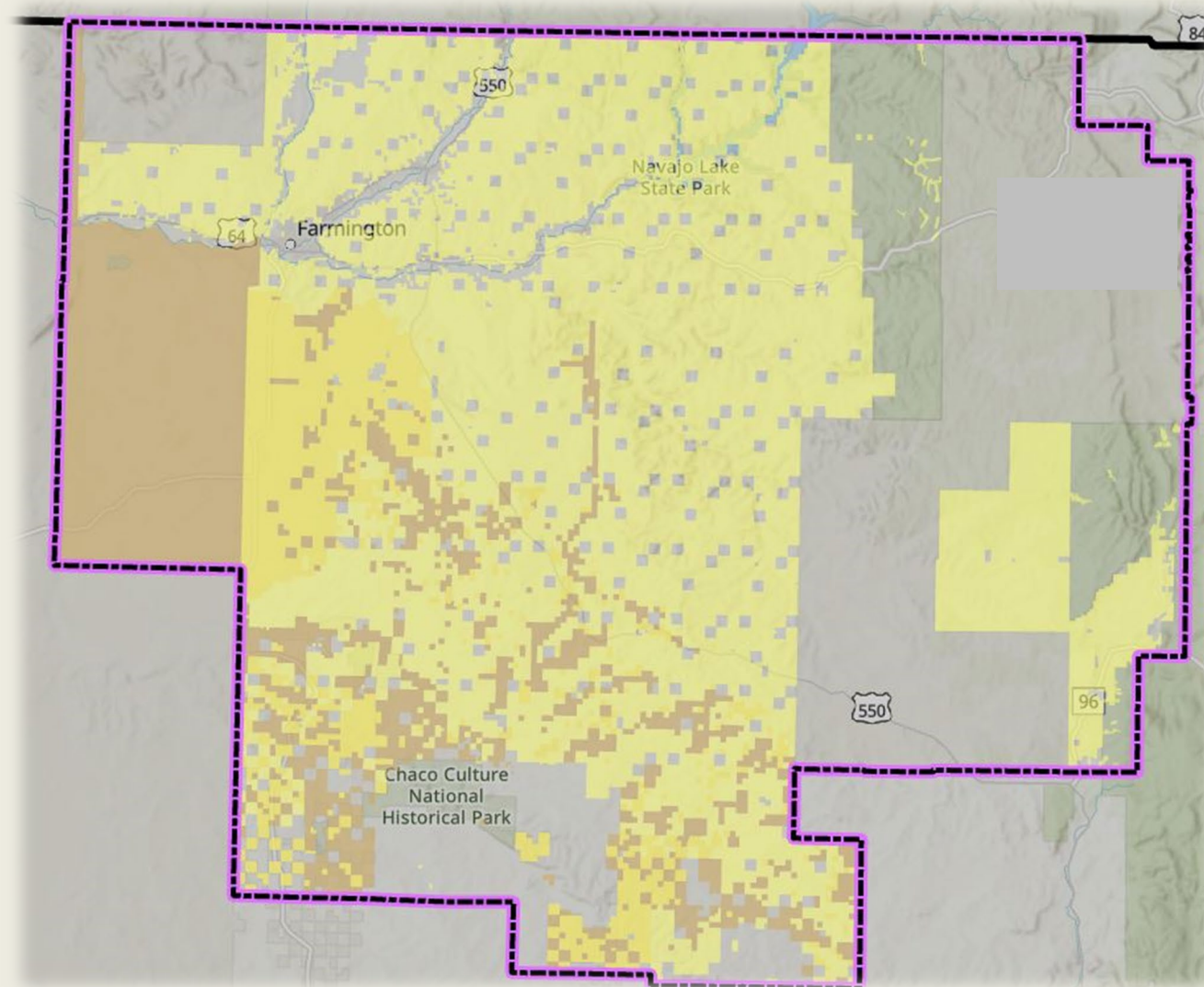


BIA Decision Area





BLM and BIA Decision Areas





BLM and BIA Range of Alternatives Summary

| Alternative | BLM | BIA |
|-------------|--|---|
| No Action | Continue 2003 RMP management direction | Continue current management of leasing practices |
| A | Manage and enhance habitats with measures designed to support natural ecosystems | Protect and enhance natural ecology, with protection of sensitive wildlife areas and natural resources |
| B | Preserve Chacoan and cultural landscapes; prioritize preservation of cultural and paleontological properties, including specific measures proposed by stakeholders | Preserve and protect the cultural and natural landscapes unique to northern New Mexico |
| C | Balance community needs and development while enhancing land health | Allow development to occur in harmony with the traditional, historic, socioeconomic, and cultural lifeways of planning area |
| D | Maximize resources that target economic outcomes while sustaining land health | Maximize resource production and royalty income for Navajo Nation and tribal allottees and minimize and mitigate impacts to surrounding communities |



Next Steps



Comments

- Substantive, specific comments are the most useful for this process. These comments could include new information about the proposed action, alternatives, or analysis; identify factual corrections or flaws in the analysis; or provide information on different sources of research that could better inform the analysis.
- Examples of comments that are not substantive and may not help us change the draft EIS would include the following:
 - Those in favor of, or against, the proposed action or alternatives without providing any rationale
 - Agreeing or disagreeing with agency policy or decisions without justification or supporting data
 - Not being relevant to the decision area or proposed management decisions
 - Vague or open-ended questions

Poor:

"This document is terrible. I am against it!"

Good:

"This document is terrible in that you do not adequately address X impacts that this may have on X resources."

Best:

"This document is terrible in that you do not adequately address X impacts that this may have on X resources. I'm attaching some results of studies that were conducted for your review."



How to Submit Comments

- **Online BLM ePlanning:** www.blm.gov/nm/farmington
- **Voice Mailbox:** 720-213-5786
- **Mail:**
Sarah Scott, BLM RMPA/EIS Project Manager,
6251 College Blvd. Suite A,
Farmington, NM 87402

Robert Begay, BIA RMPA/EIS Project Manager,
301 W. Hill Ave.,
Gallup, NM 87301

Comments must be received by May 28, 2020



Comments



How to Submit Comments

- **Online BLM ePlanning:** www.blm.gov/nm/farmington
- **Voice Mailbox:** 720-213-5786
- **Future Meeting Registration:** 505-635-9701
- **Mail:**

Sarah Scott, BLM RMPA/EIS Project Manager
6251 College Blvd., Suite A
Farmington, NM 87402

Robert Begay, BIA RMPA/EIS Project Manager
301 W. Hill Ave.,
Gallup, NM 87301

Comments must be received by May 28, 2020