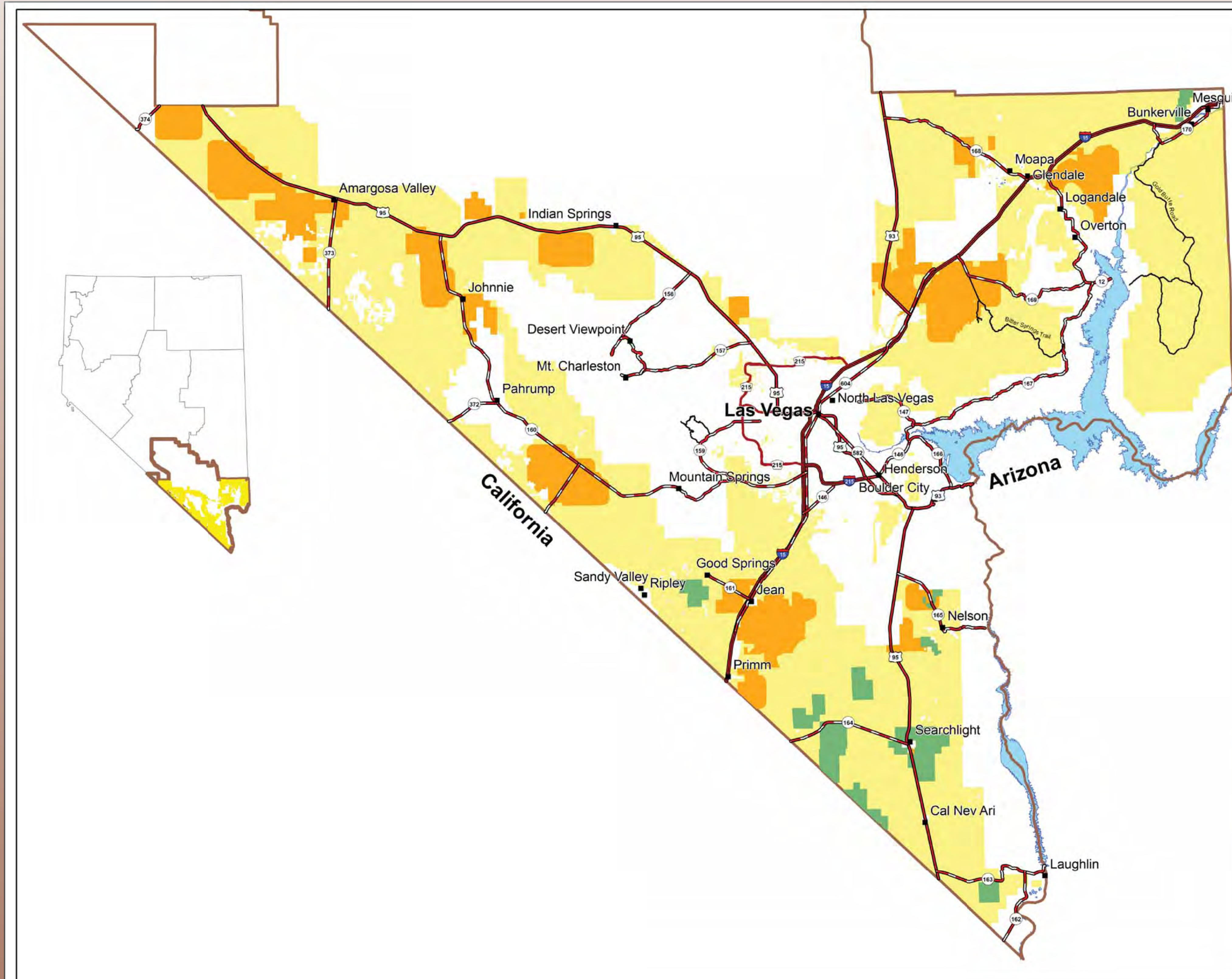


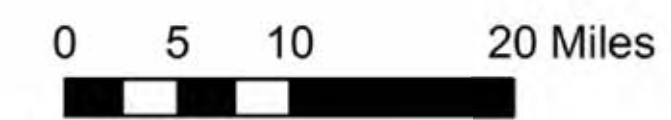
# Renewable Energy



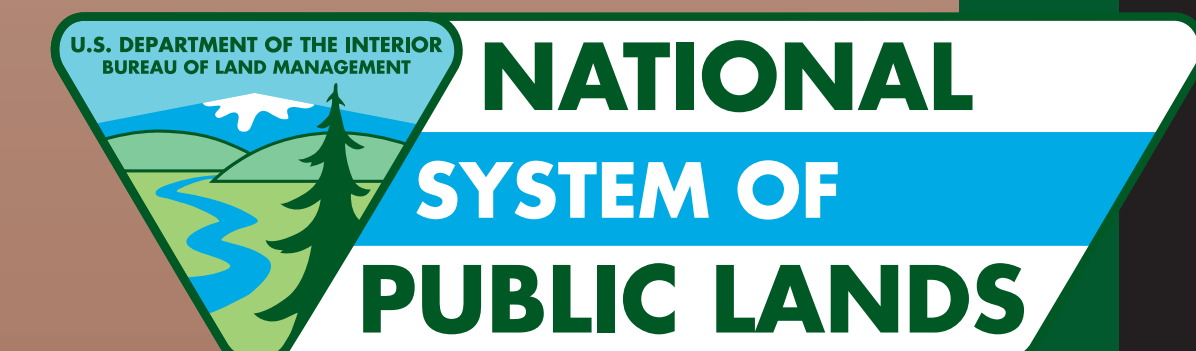
## Las Vegas RMP Revision Las Vegas and Pahrump Field Offices

### Legend

- Proposed Solar Areas
- Proposed Wind Areas
- Bureau of Land Management
- Interstate
- US Highway
- State Highway
- County Highway
- Back Country Byway
- Water
- Towns



No warranty is made by the Bureau of Land Management as to the accuracy, reliability, or completeness of these data for individual or aggregate use with other data. Original data were compiled from various sources. This information may not meet National Map Accuracy Standards. This product was developed through digital means and may be updated without notification.



Increasing interest in developing sources of renewable energy has raised several issues that have not been addressed in the existing Resource Management Plan (RMP). The issues include:

- Are there existing and potential development areas for renewable energy projects?
- Should some areas be closed to the potential for renewable energy projects?
- What stipulations/restrictions should be included to protect sensitive resources when considering the development of renewable energy projects in areas where such development is appropriate?

In addressing the above issues, the RMP Revision will identify avoidance areas (areas to be avoided, but may be available with special stipulations), exclusion areas (areas not available), or areas open for consideration of rights-of-way (ROWs) associated with renewable energy projects. In addition, the RMP will incorporate recently completed and ongoing programmatic planning efforts related to renewable energy.