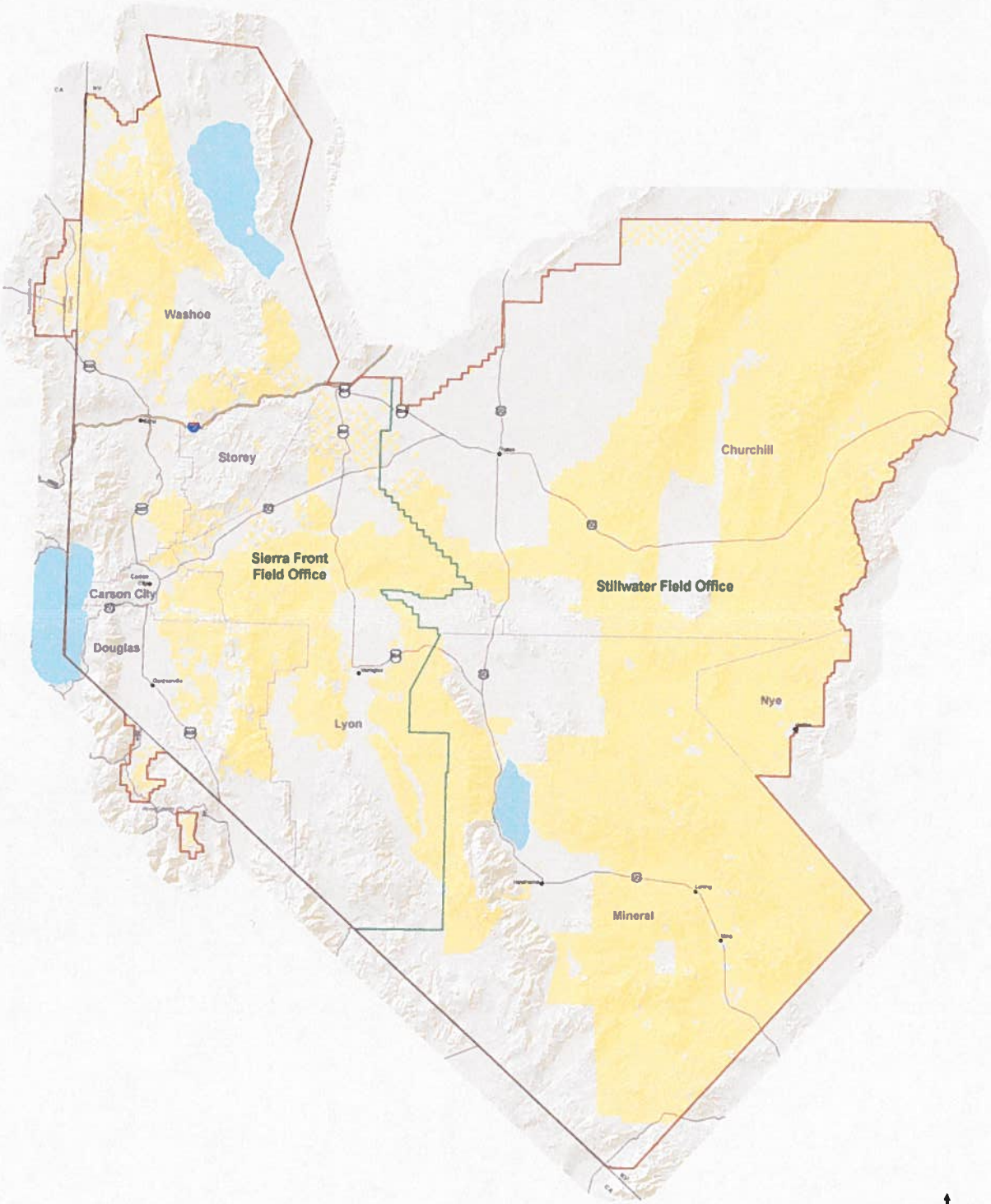


Bureau of Land Management Carson City District



Legend

- BLM Lands
- BLM District Office & RMP Planning Area
- BLM Field Office
- County Boundaries

Bureau of Land Management
Carson City District Office
5665 Morgan Mill Rd.
Carson City, NV. 89701

No warranty is made by the BLM as to the accuracy, reliability, or completeness of these data for individual use or aggregate use with other data.

AMS Map

N

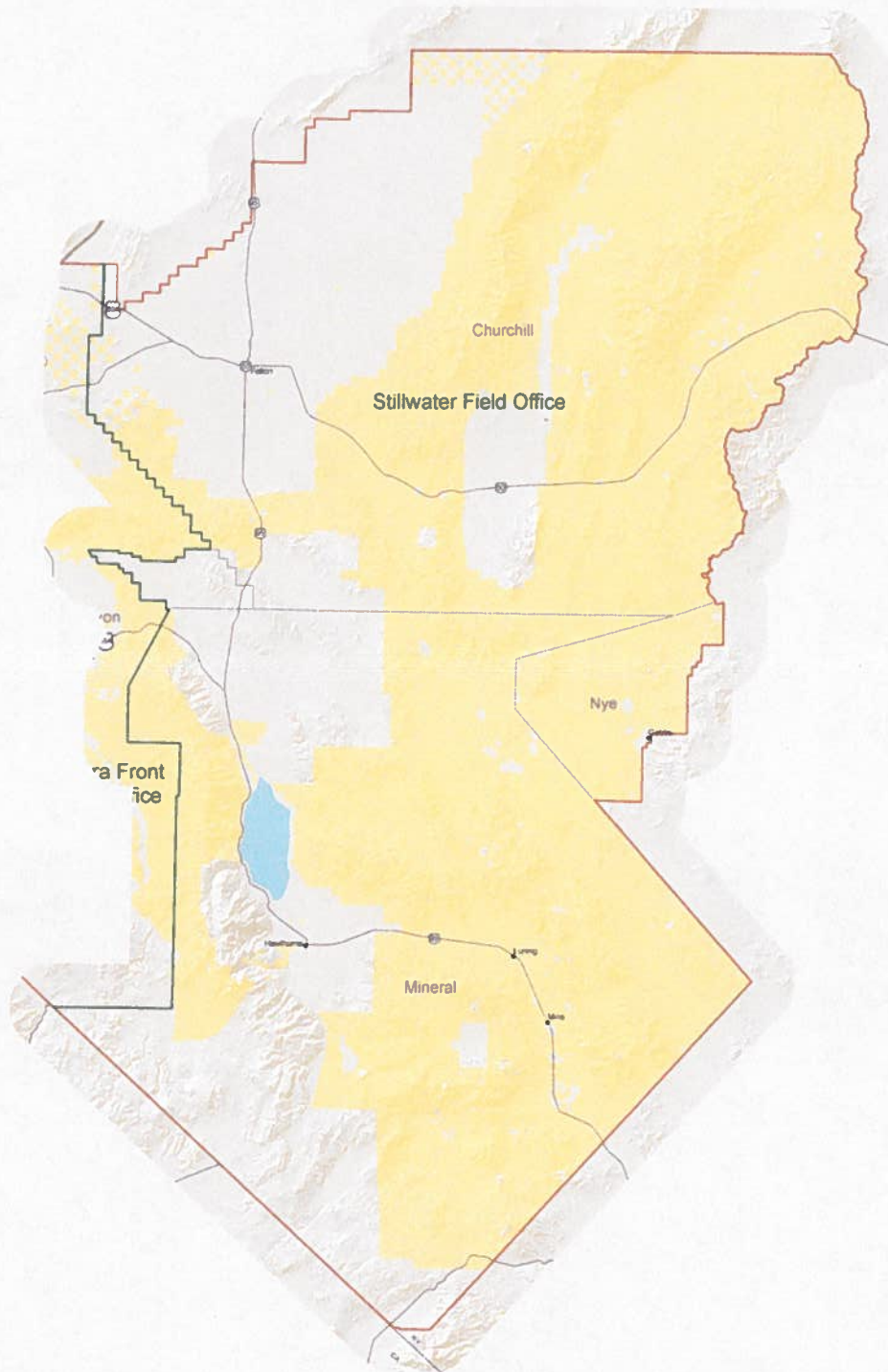
0 25 Miles

NEVADA

Carson City District Office

October 2012

Bureau of Land Management Carson City District Stillwater Field Office



Legend

- BLM Lands
- BLM District Office and RMP Planning Area
- BLM Field Office
- County Boundaries

Bureau of Land Management
Carson City District Office
5665 Morgan Mill Rd.
Carson City, NV. 89701

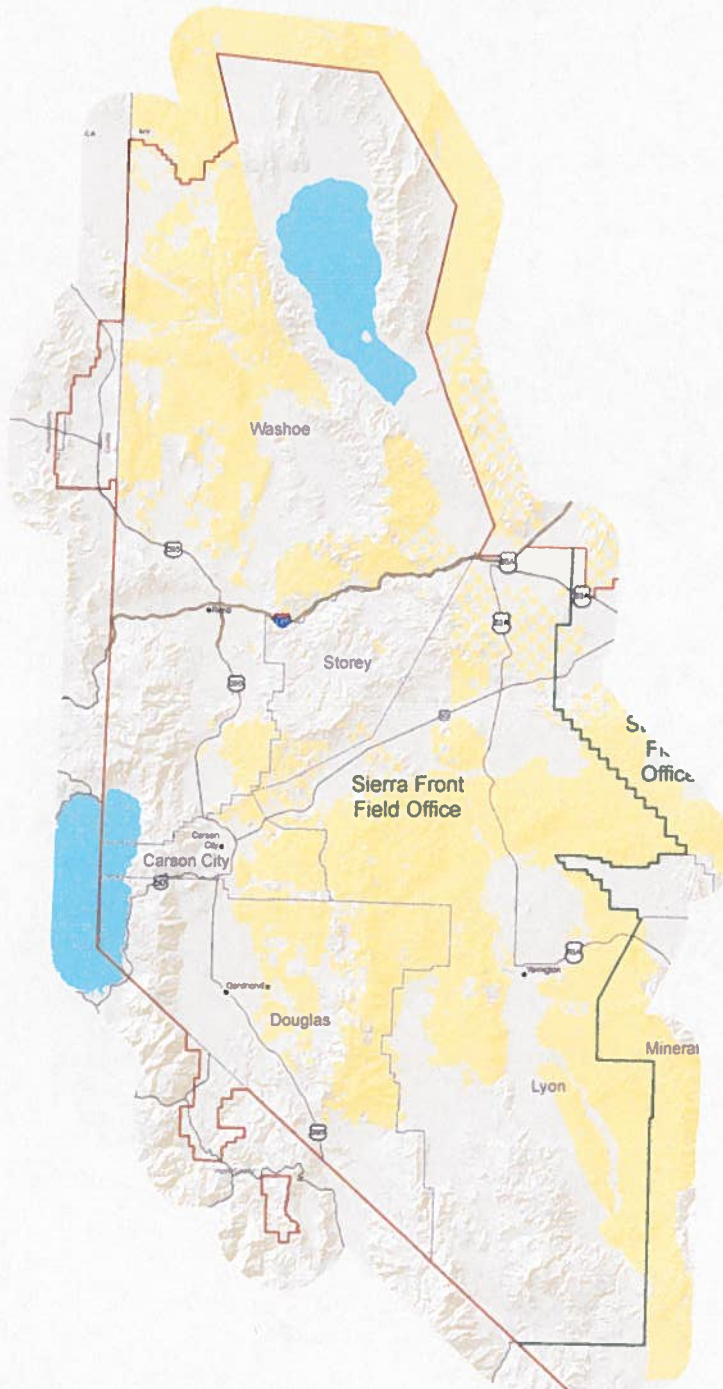
No warranty is made by the BLM as to the accuracy, reliability, or completeness of these data for individual use or aggregate use with other data.

AMS Map



October 2012

Bureau of Land Management Carson City District Sierra Front Field Office



Legend

- BLM Lands
- BLM District Office and RMP Planning Area
- BLM Field Office
- County Boundaries

Bureau of Land Management
Carson City District Office
5665 Morgan Mill Rd.
Carson City, NV 89701

No warranty is made by the BLM as to the accuracy, reliability, or completeness of these data for individual use or aggregate use with other data.

AMS Map

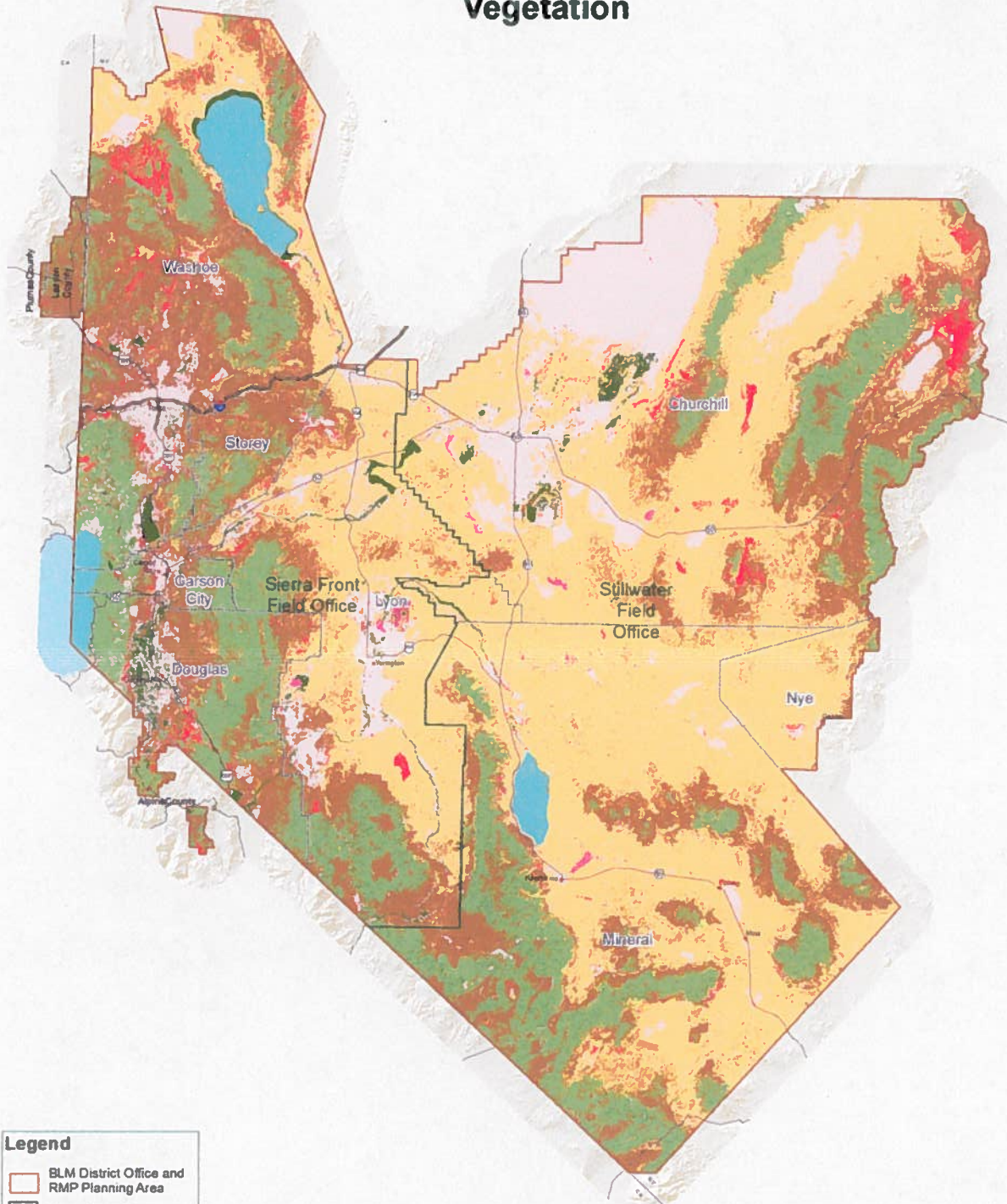


October 2012

Bureau of Land Management Carson City District



Vegetation



Legend

- BLM District Office and RMP Planning Area
- BLM Field Office
- County Boundaries

Vegetation Communities

- Invasive
- NA
- Other
- Riparian
- Sagebrush
- Scrubland
- Unique
- Woodlands

Bureau of Land Management
Carson City District Office
5665 Morgan Mill Rd.
Carson City, NV. 89701

No warranty is made by the BLM as to the accuracy, reliability, or completeness of these data for individual use or aggregate use with other data.

AMS Map

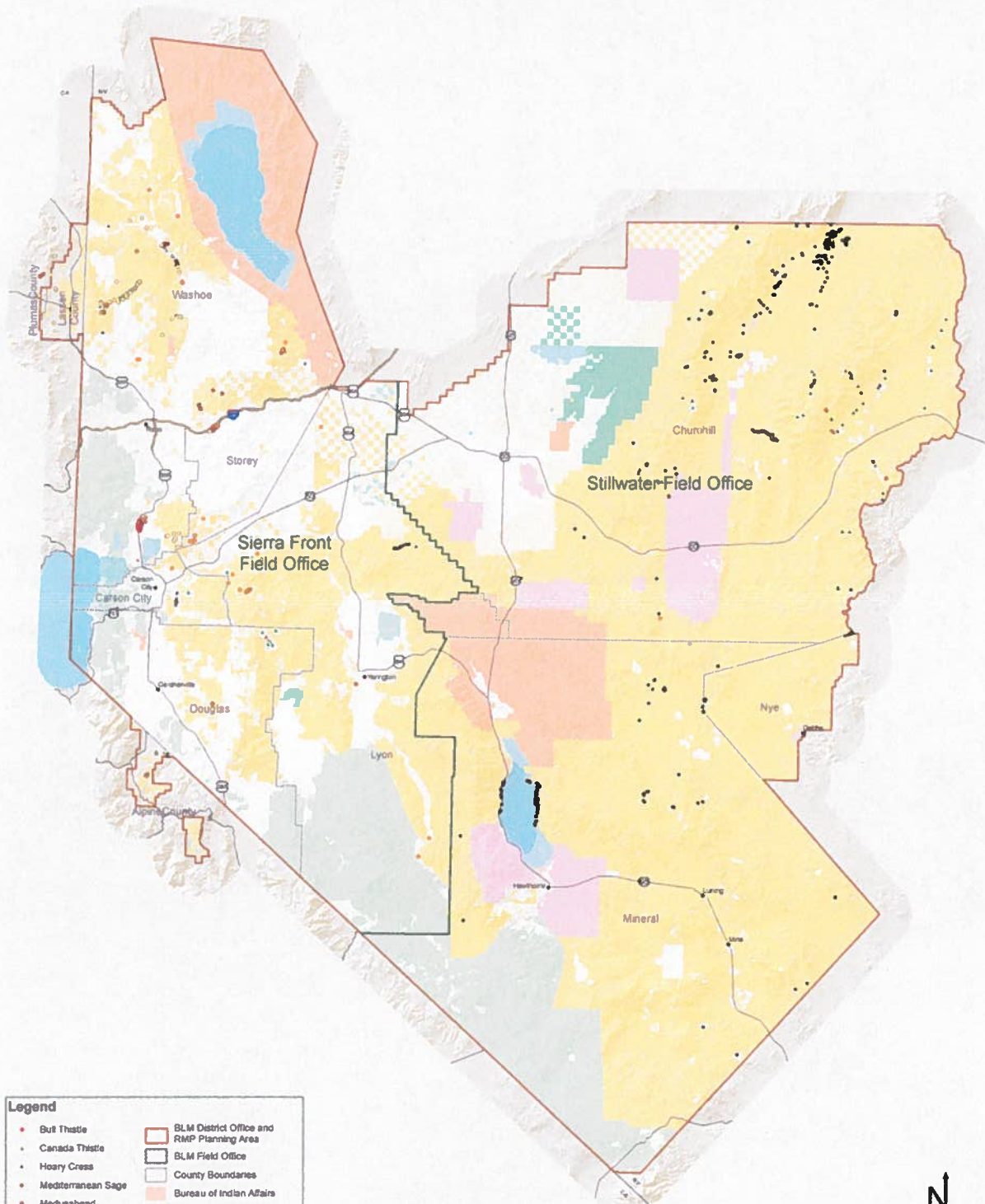


October 2012

Bureau of Land Management Carson City District



Weeds



Legend	
• Bull Thistle	BLM District Office and RMP Planning Area
• Canada Thistle	BLM Field Office
• Hoary Cress	County Boundaries
• Mediterranean Sage	Bureau of Indian Affairs
• Medusahead	Bureau of Land Management
• Musk Thistle	Bureau of Reclamation
• Pepperweed	Department of Defense
• Perennial Pepperweed	Forest Service
• Perennial Pepperweed	Fish and Wildlife Service
• Russian Knapweed	Nevada State
• Scotch Thistle	Regional Park
• Spotted Knapweed	Private
• Tamarisk	Water
• White Knapweed	
• Yellow Starthistle	

Bureau of Land Management
Carson City District Office
5665 Morgan Mill Rd.
Carson City, NV 89701

No warranty is made by the BLM as to the accuracy, reliability, or completeness of these data for individual use or aggregate use with other data.

AMS Map

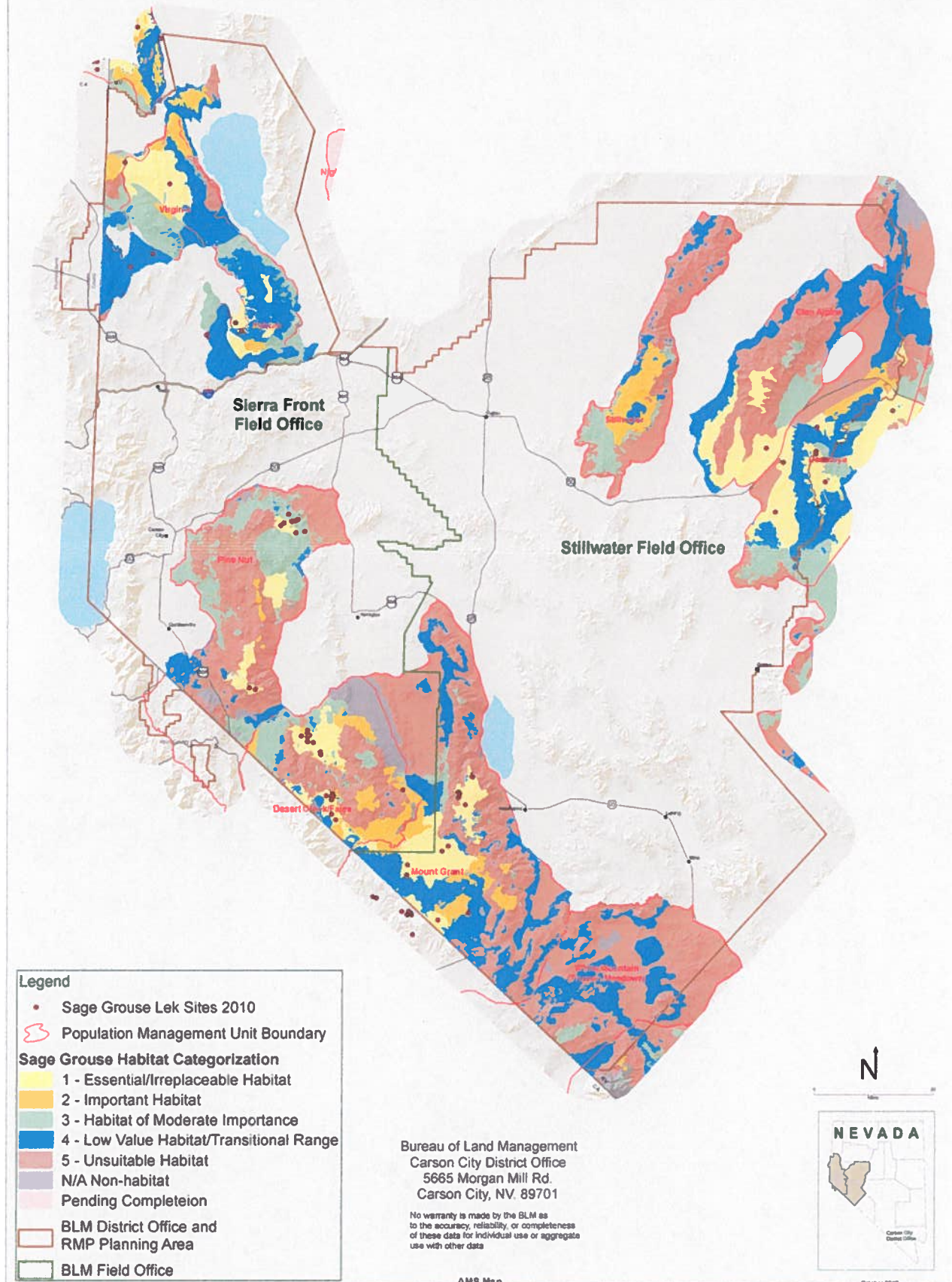


October 2012

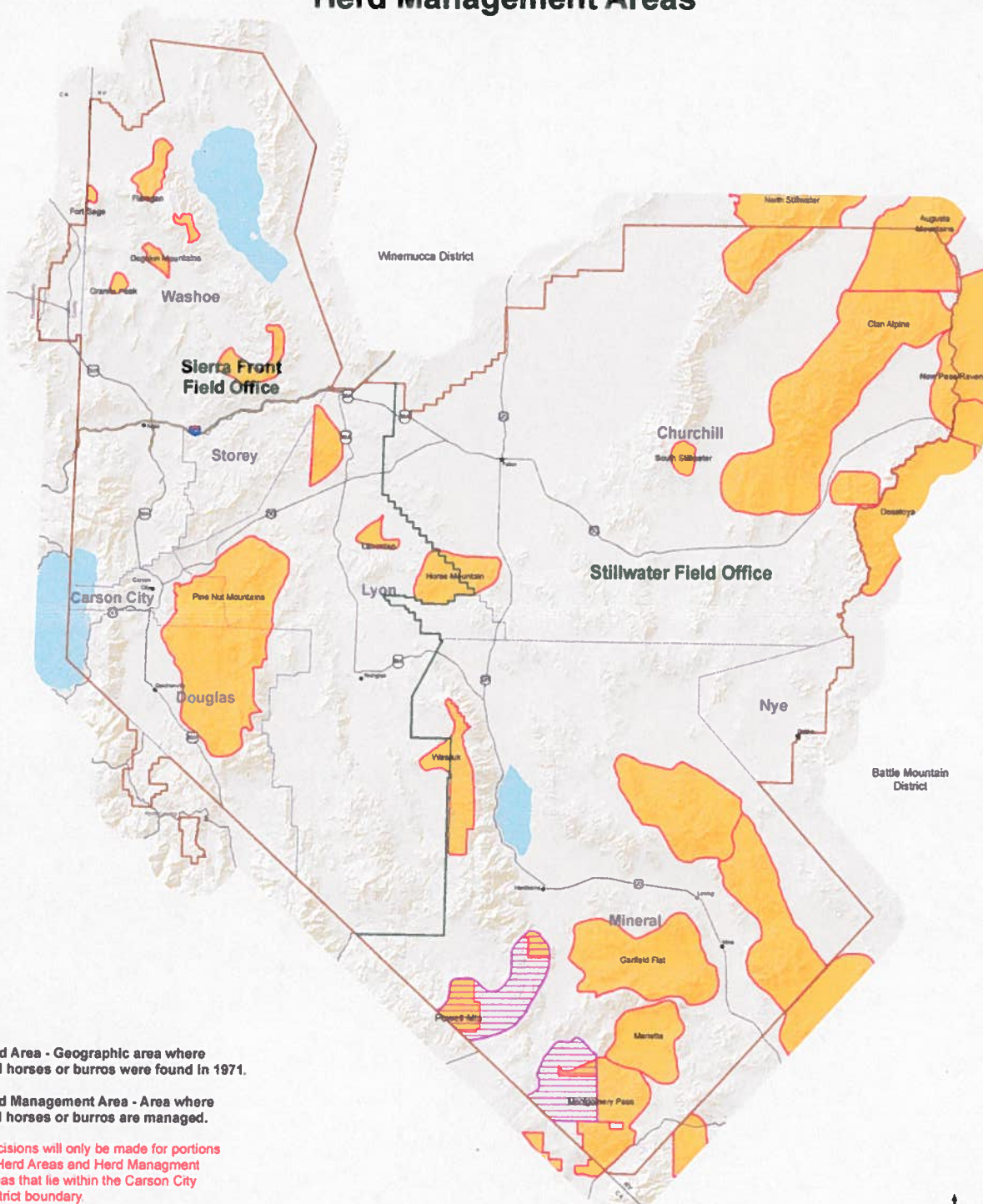
Bureau of Land Management Carson City District



Sage Grouse Habitat Categorization



Bureau of Land Management Carson City District Wild Horse & Burro Herd Management Areas



Herd Area - Geographic area where wild horses or burros were found in 1971.

Herd Management Area - Area where wild horses or burros are managed.

Decisions will only be made for portions of Herd Areas and Herd Management Areas that lie within the Carson City District boundary.

Legend

- BLM Designated Herd Areas
- BLM Herd Management Areas
- USFS Wild Horse & Burro Territories
- BLM District Office and RMP Planning Area
- BLM Field Office
- County Boundaries

Bureau of Land Management
Carson City District Office
5665 Morgan Mill Rd.
Carson City, NV. 89701

No warranty is made by the BLM as to the accuracy, reliability, or completeness of these data for individual use or aggregate use with other data.

AMS Map

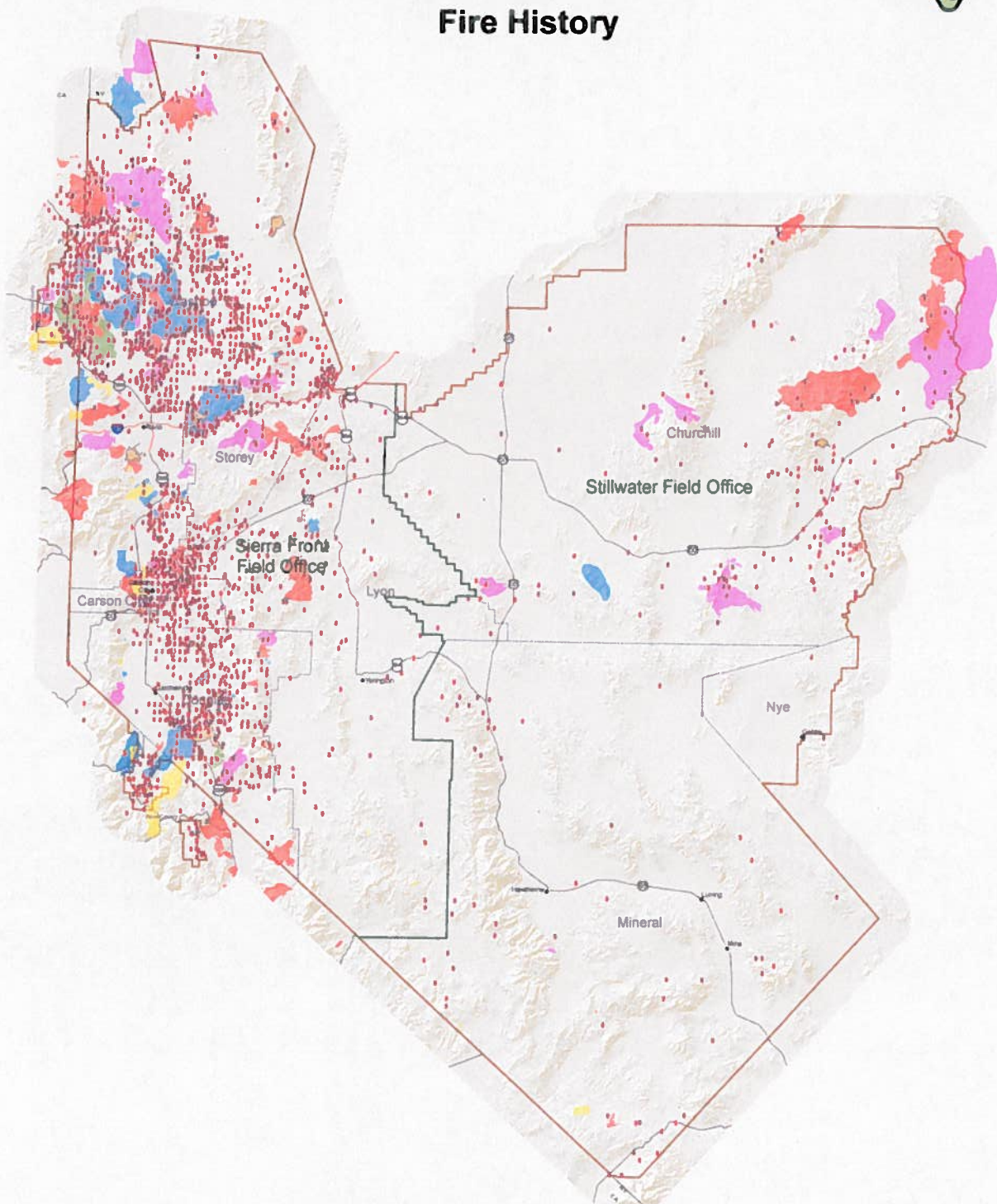


December 2012

Bureau of Land Management Carson City District



Fire History



- Legend**
- Point of Origin 1990-2011
 - 2010-2011
 - 2000-2009 Large Wildfires
 - 1990-1999 Large Wildfires
 - 1980-1989 Large Wildfires
 - 1970-1979 Large Wildfires
 - 1910-1969 Large Wildfires

Large fire history is incomplete. Only those fires for which data were available are included.

Point of origin data represents spatial distribution and not frequency (multiple points are overlapping and displayed as one).

Bureau of Land Management
Carson City District Office
5665 Morgan Mill Rd.
Carson City, NV 89701

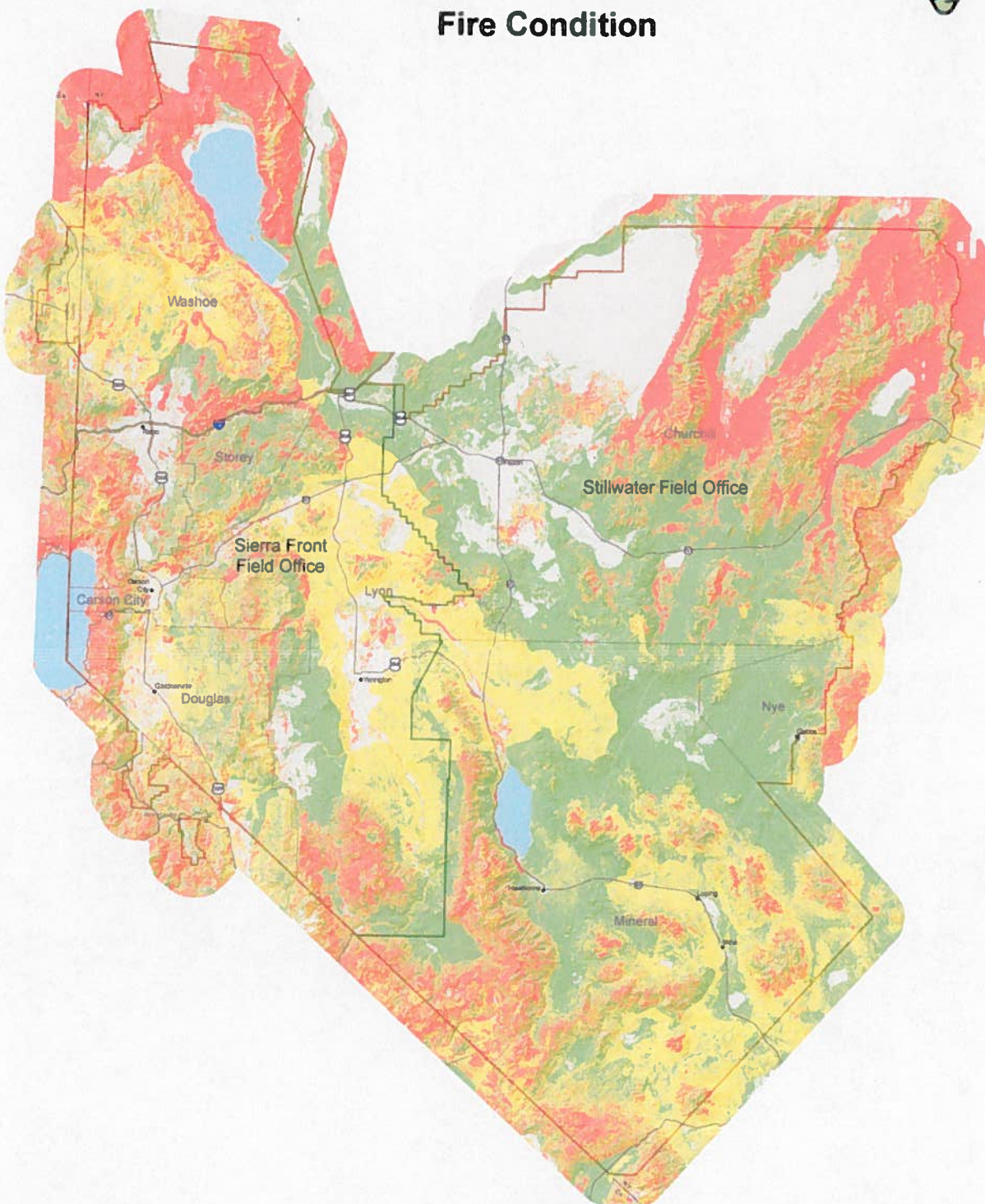
No warranty is made by the BLM as to the accuracy, reliability, or completeness of these data for individual use or aggregate use with other data.

AMS Map



October 2012

Bureau of Land Management Carson City District Fire Condition



Legend

Fire Condition

- 1
- 2
- 3

BLM District Office and RMP Planning Area

BLM Field Office

County Boundaries

Bureau of Land Management
Carson City District Office
5665 Morgan Mill Rd.
Carson City, NV. 89701

No warranty is made by the BLM as to the accuracy, reliability, or completeness of these data for individual use or aggregate use with other data.

AMS Map

N

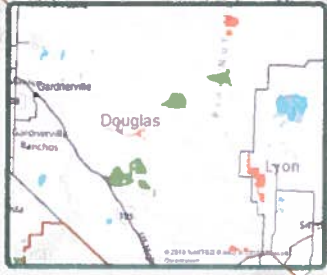
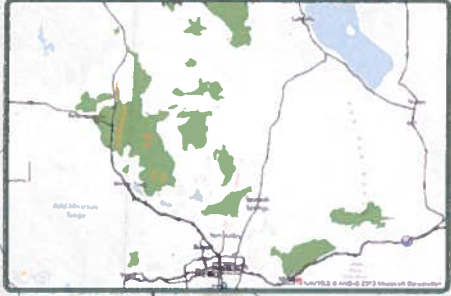
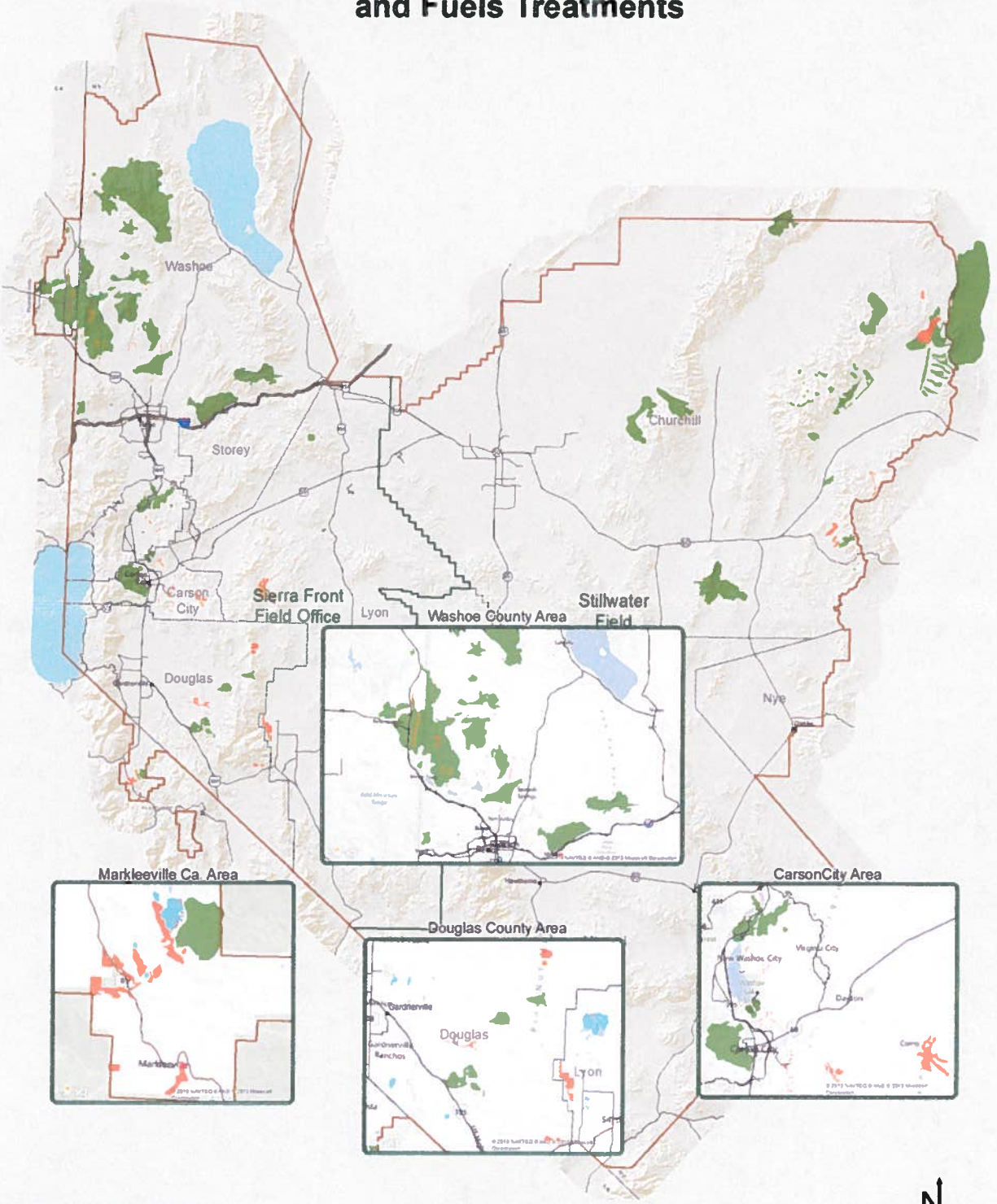
0 10 20 Miles

NEVADA

Carson City District Office

October 2012

Bureau of Land Management Carson City District Emergency Stabilization Rehabilitation and Fuels Treatments



- Legend**
- Fuels Treatments
 - ESR Treatments
 - BLM District Office and RMP Planning Area
 - BLM Field Office
 - County Boundaries

Bureau of Land Management
Carson City District Office
5665 Morgan Mill Rd.
Carson City, NV. 89701

No warranty is made by the BLM as to the accuracy, reliability, or completeness of these data for individual use or aggregate use with other data.

AMS Map

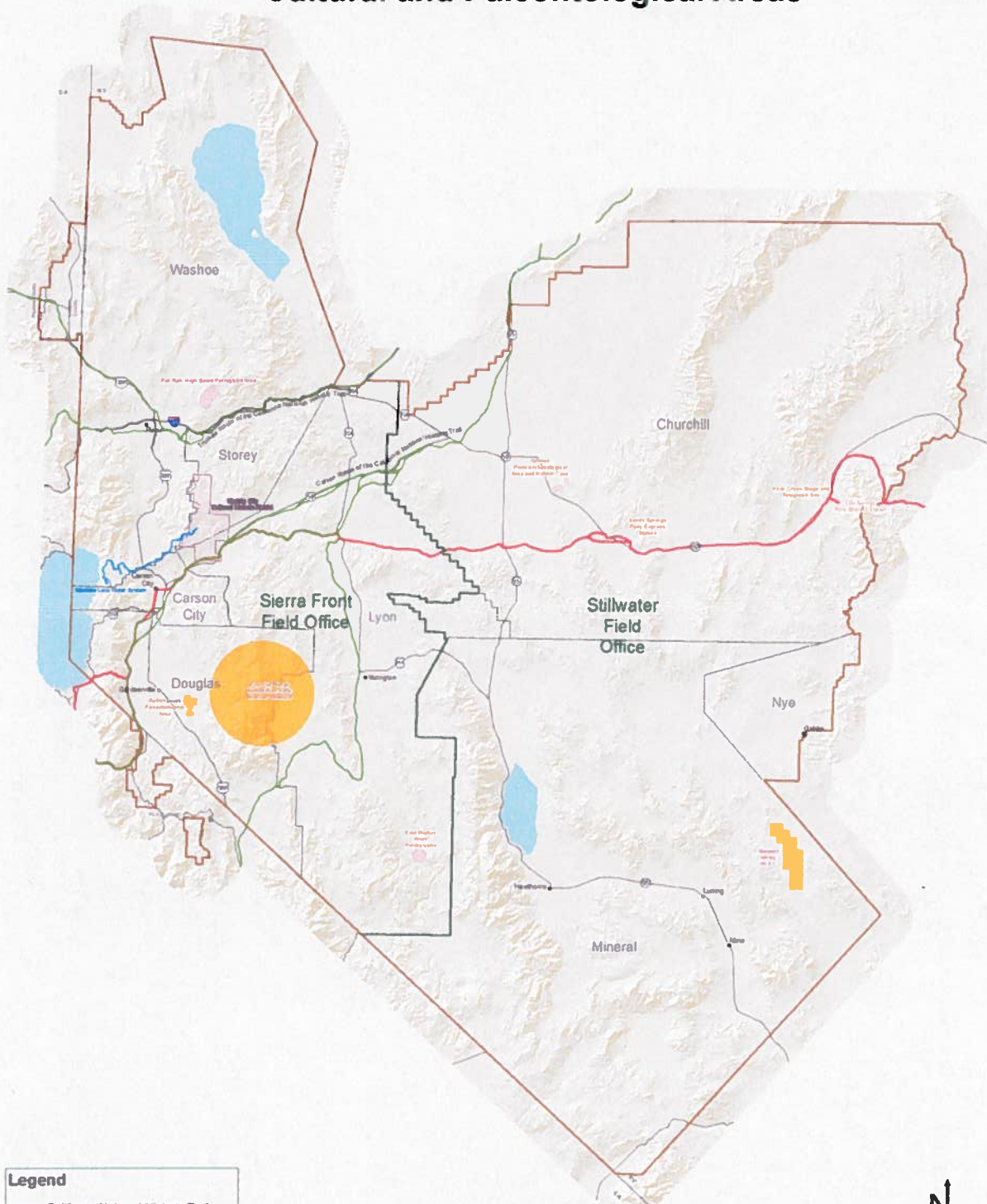


October 2012

Bureau of Land Management Carson City District



Cultural and Paleontological Areas

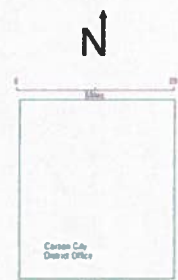


- Legend**
- California National Historic Trail
 - Pony Express National Historic Trail
 - Mariette Lake Water System
 - Paleontological Sites
 - Cultural Sites
 - Virginia City National Historic District
 - BLM District Office and RMP Planning Area
 - BLM Field Office
 - County Boundaries

Bureau of Land Management
Carson City District Office
5665 Morgan Mill Rd.
Carson City, NV. 89701

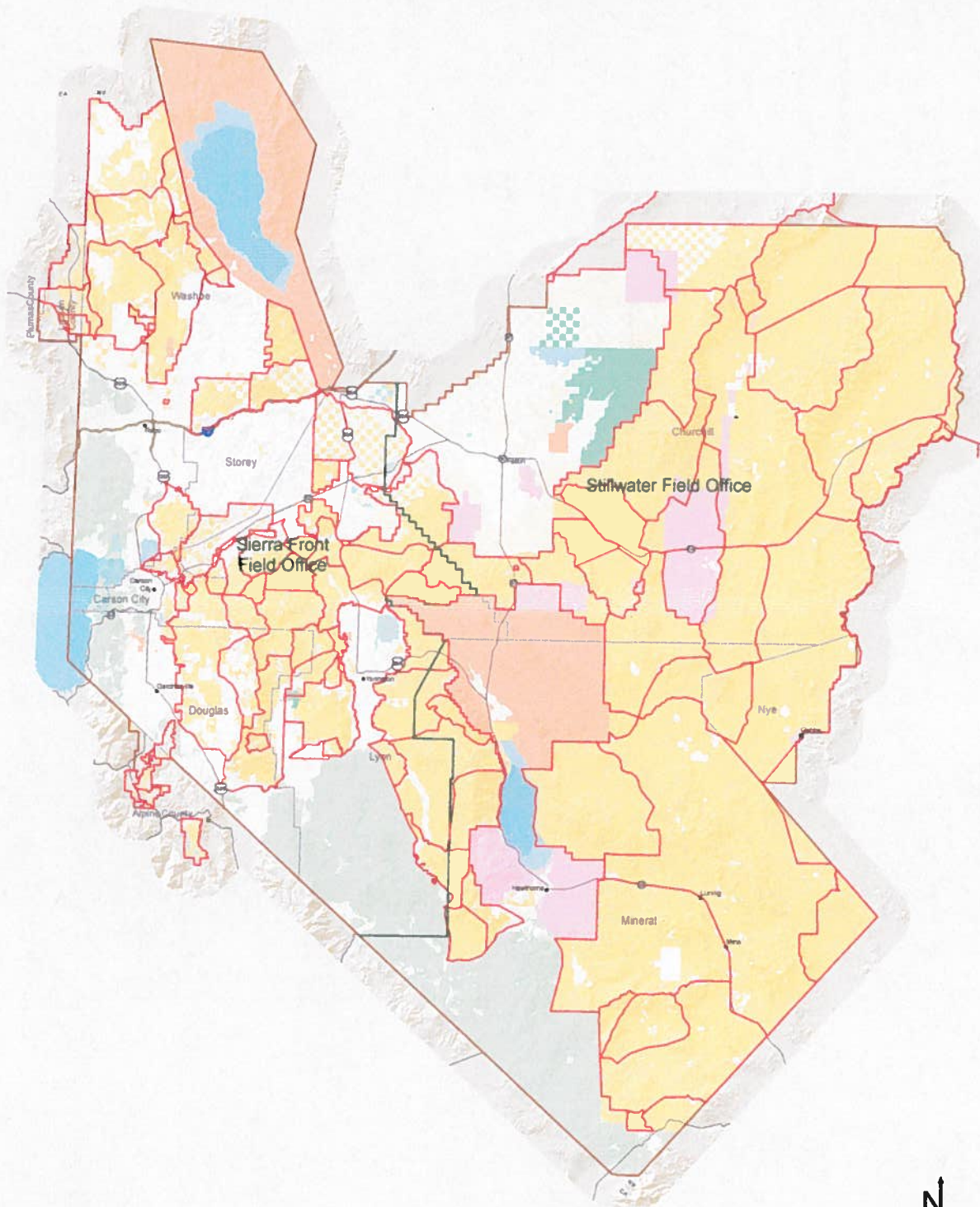
No warranty is made by the BLM as to the accuracy, reliability, or completeness of these data for individual use or aggregate use with other data.

AMS Map



October 2012

Bureau of Land Management Carson City District Livestock Grazing



Legend

- | | |
|---|---|
| Allotments | Forest Service |
| BLM District Office and RMP Planning Area | Fish and Wildlife Service |
| BLM Field Office | Nevada State |
| Bureau of Indian Affairs | Regional Park |
| Bureau of Land Management | Private |
| Bureau of Reclamation | Water |
| Department of Defense | |

Bureau of Land Management
Carson City District Office
5665 Morgan Mill Rd.
Carson City, NV. 89701

No warranty is made by the BLM as to the accuracy, reliability, or completeness of these data for individual use or aggregate use with other data.

AMS Map

N

0 10 20 Miles

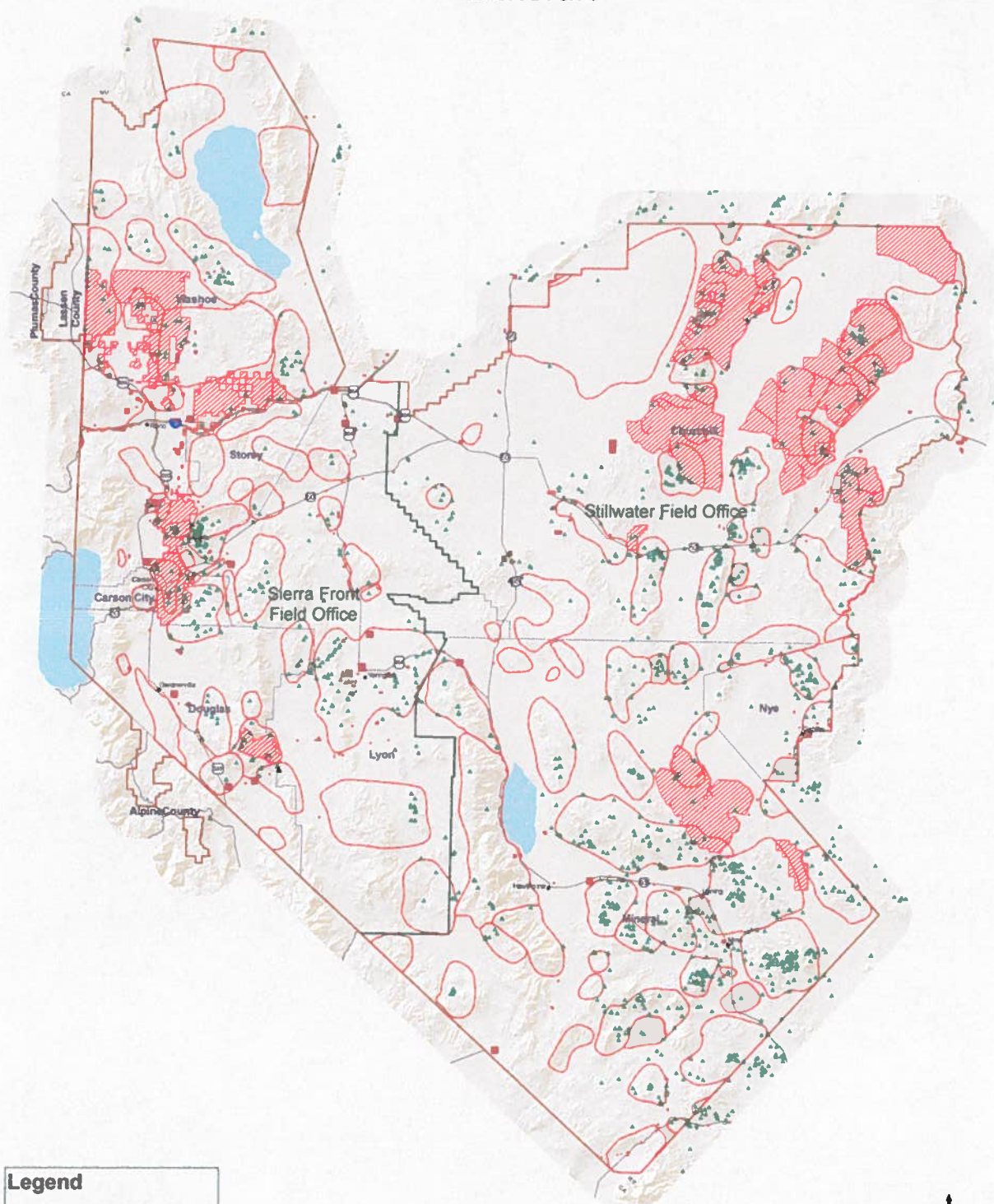


October 2012

Bureau of Land Management Carson City District



Minerals



Legend

- ▲ Abandoned Mine Lands
- Mining District Areas
- ▨ Areas Closed to Mining
- Material Pits
- BLM District Office and RMP Planning Area
- BLM Field Office
- County Boundaries

Bureau of Land Management
Carson City District Office
5665 Morgan Mill Rd.
Carson City, NV. 89701

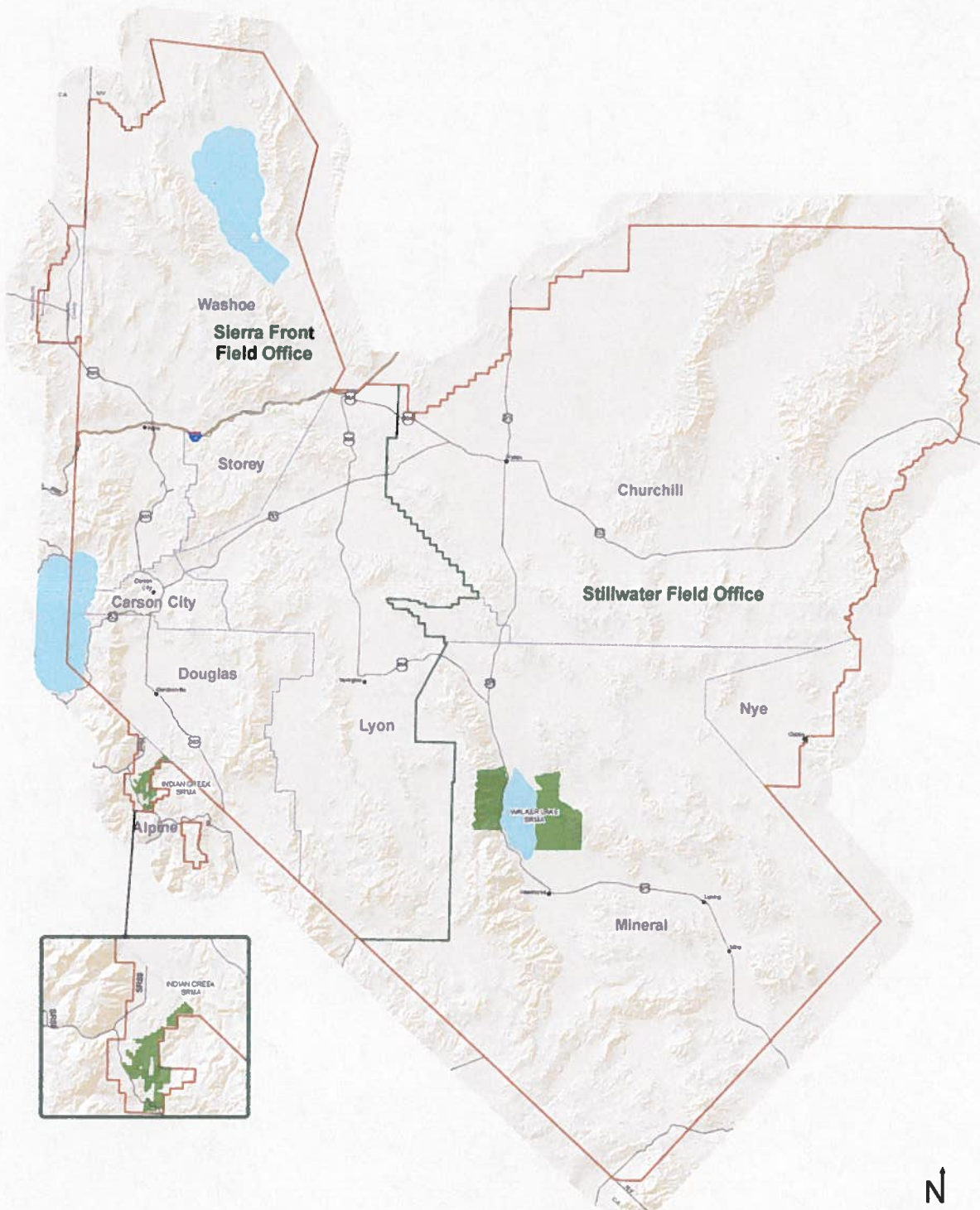
No warranty is made by the BLM as to the accuracy, reliability or completeness of these data for individual use or aggregate use with other data.

AMS Map



October 2012

Bureau of Land Management Carson City District Special Recreation Management Areas



- Legend**
- SRMA Lands
 - BLM District Office and RMP Planning Area
 - BLM Field Office
 - County Boundaries

Bureau of Land Management
Carson City District Office
5665 Morgan Mill Rd.
Carson City, NV. 89701

No warranty is made by the BLM as to the accuracy, reliability, or completeness of these data for individual use or aggregate use with other data.

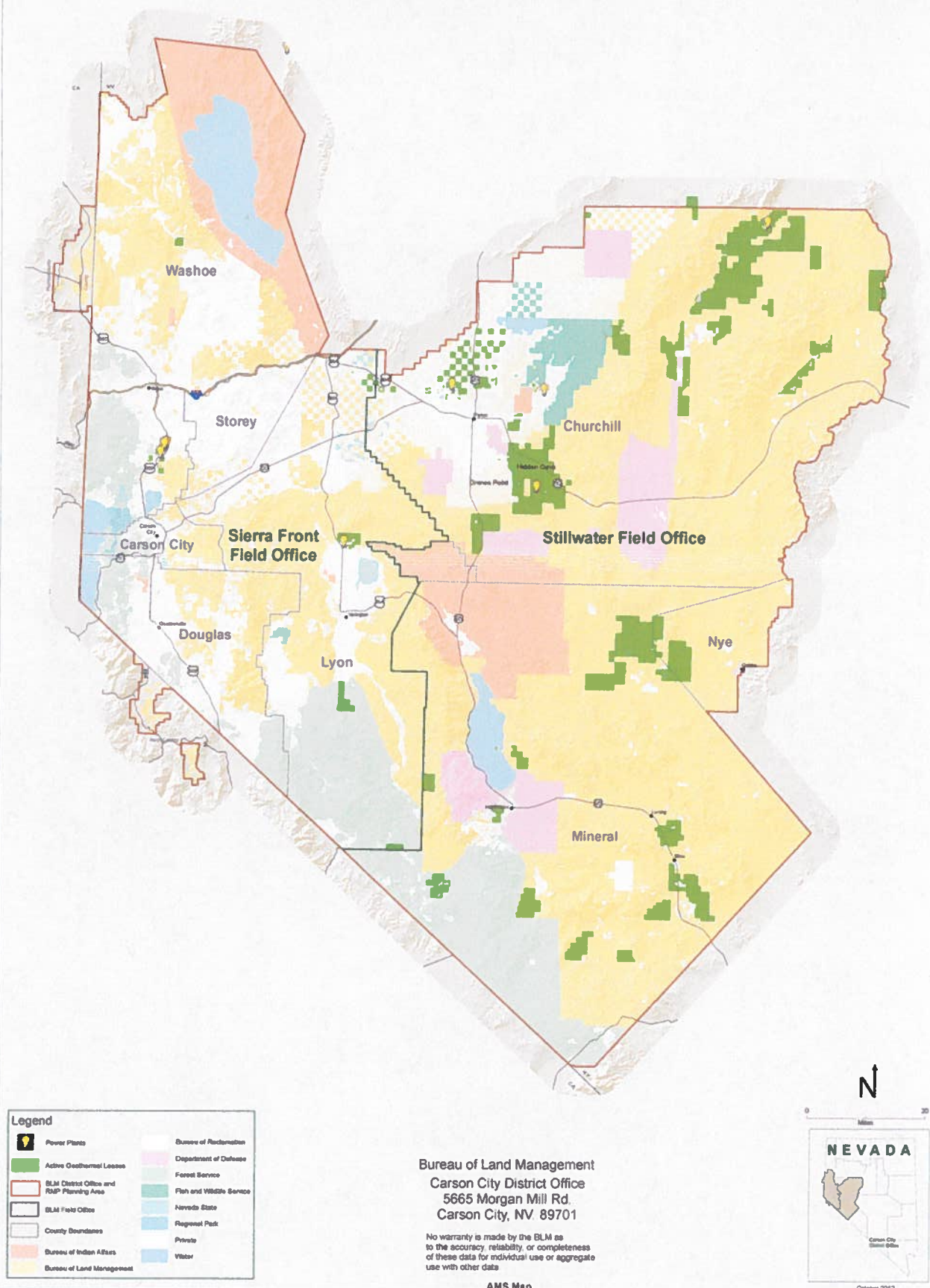
AMS Map



October 2012

Bureau of Land Management Carson City District

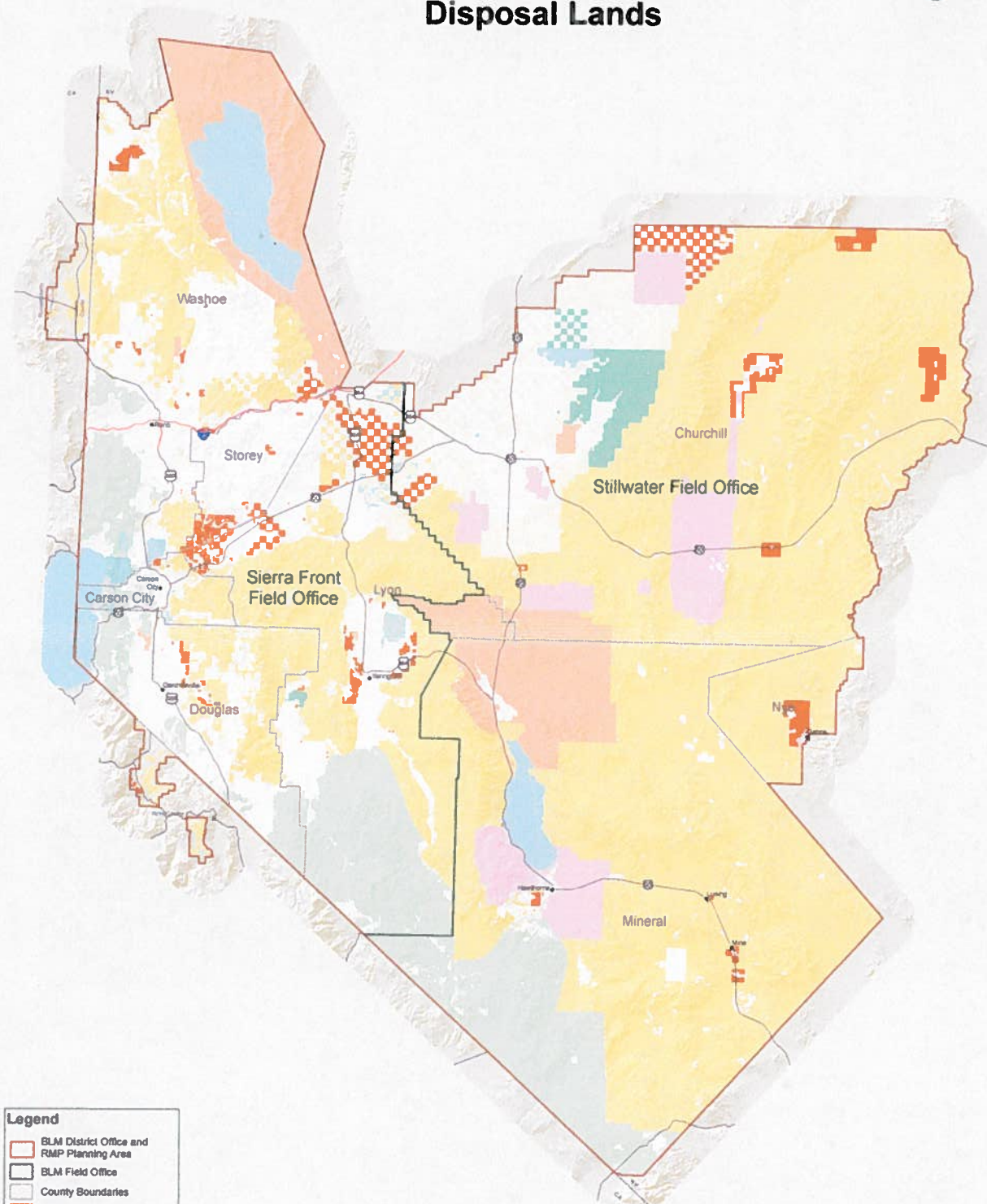
Active Geothermal Leases



Bureau of Land Management Carson City District



Disposal Lands



- Legend**
- SLM District Office and RMP Planning Area
 - SLM Field Office
 - County Boundaries
 - Disposal Lands
 - Bureau of Indian Affairs
 - Bureau of Land Management
 - Bureau of Reclamation
 - Department of Defense
 - Forest Service
 - Fish and Wildlife Service
 - Nevada State
 - Regional Park
 - Private
 - Water

Bureau of Land Management
Carson City District Office
5665 Morgan Mill Rd.
Carson City, NV 89701

No warranty is made by the BLM as to the accuracy, reliability or completeness of these data for individual use or aggregate use with other data.

AMS Map



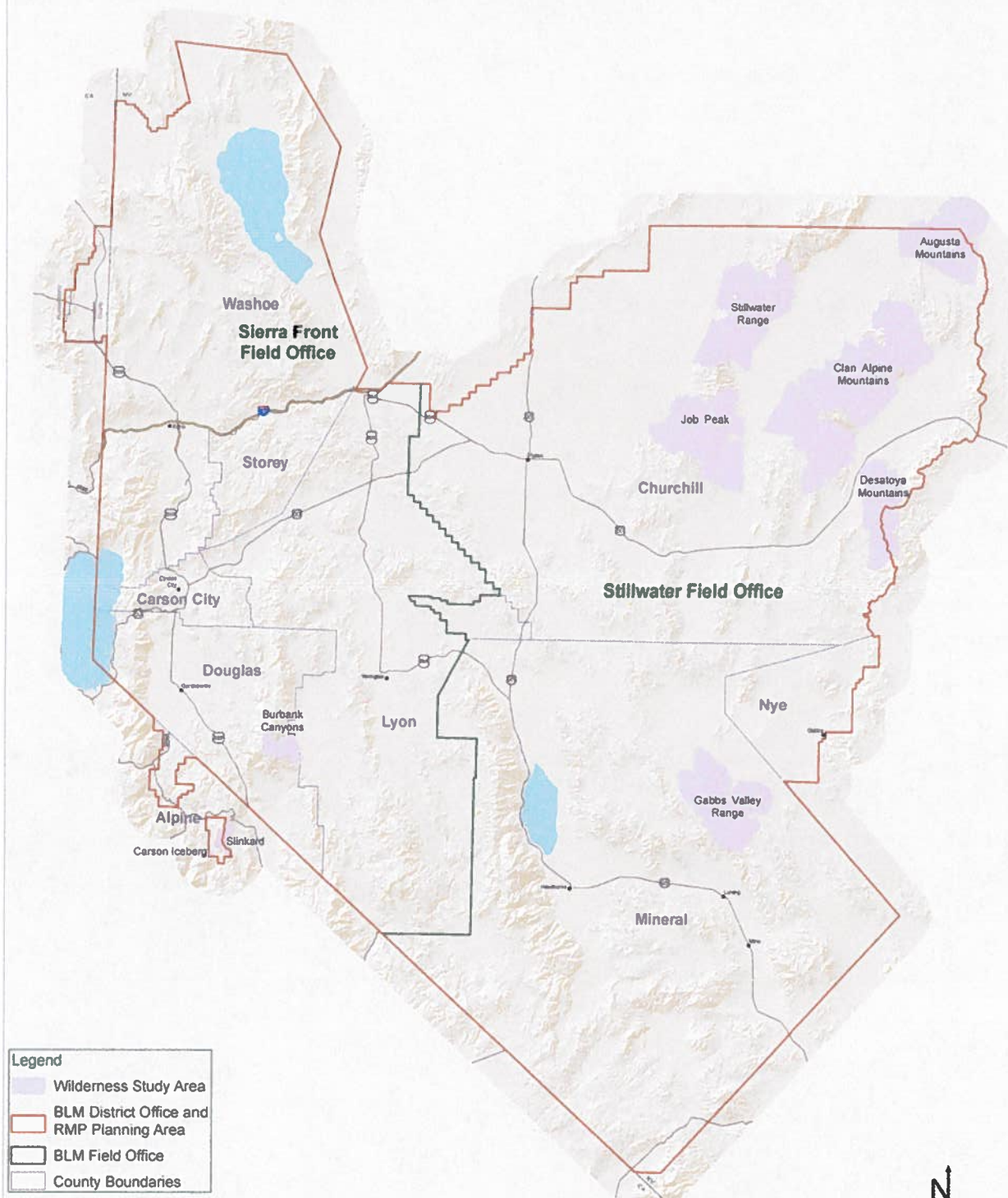
December 2012



A map of the state of Nevada with county boundaries. The Carson City District Office is highlighted in a darker shade of gray, located in the western part of the state. A scale bar at the top indicates 0 to 100 miles. The word "NEVADA" is printed in large, bold, black letters across the center of the map.

October 2012

Bureau of Land Management Carson City District Wilderness Study Areas



Bureau of Land Management
Carson City District Office
5665 Morgan Mill Rd.
Carson City, NV. 89701

No warranty is made by the BLM as to the accuracy, reliability, or completeness of these data for individual use or aggregate use with other data.

AMS Map

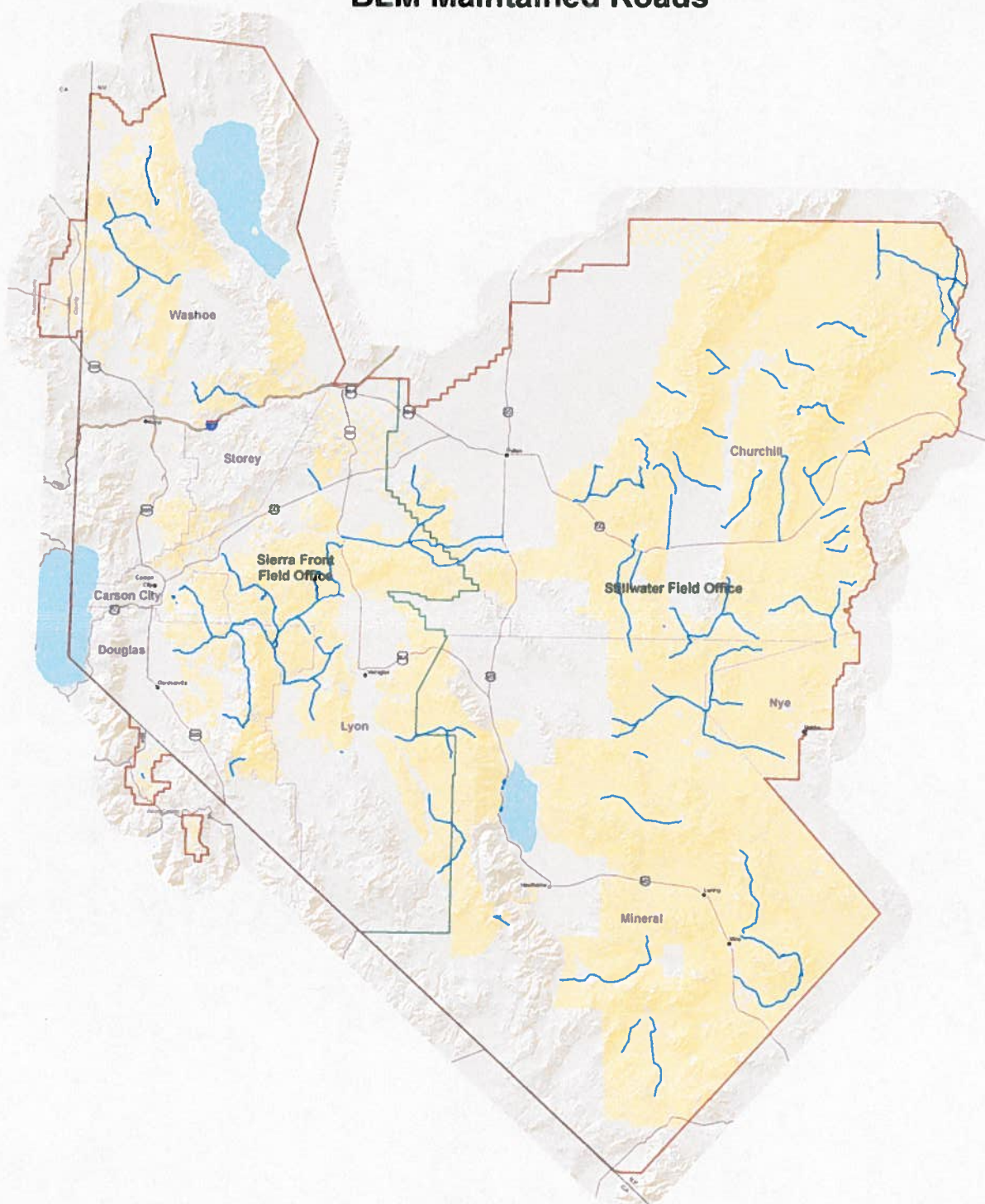


October 2012

Bureau of Land Management Carson City District



BLM Maintained Roads



Legend

- BLM Maintained Roads
- BLM Lands
- BLM District Office & RMP Planning Area
- BLM Field Office
- County Boundaries

Bureau of Land Management
Carson City District Office
5665 Morgan Mill Rd.
Carson City, NV. 89701

No warranty is made by the BLM as to the accuracy, reliability, or completeness of these data for individual use or aggregate use with other data.

AMS Map



October 2012