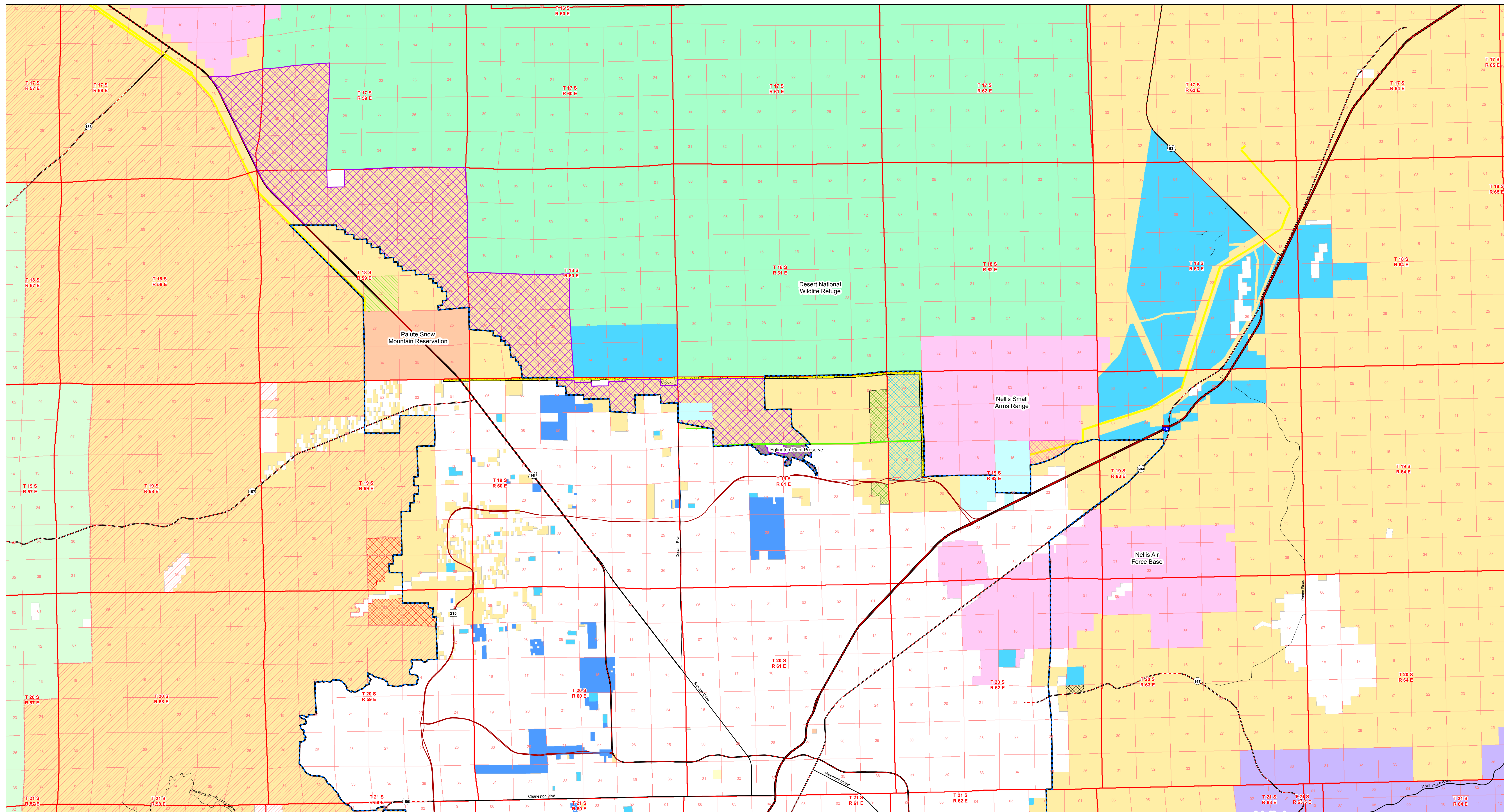


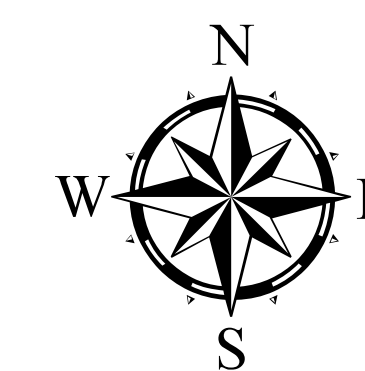
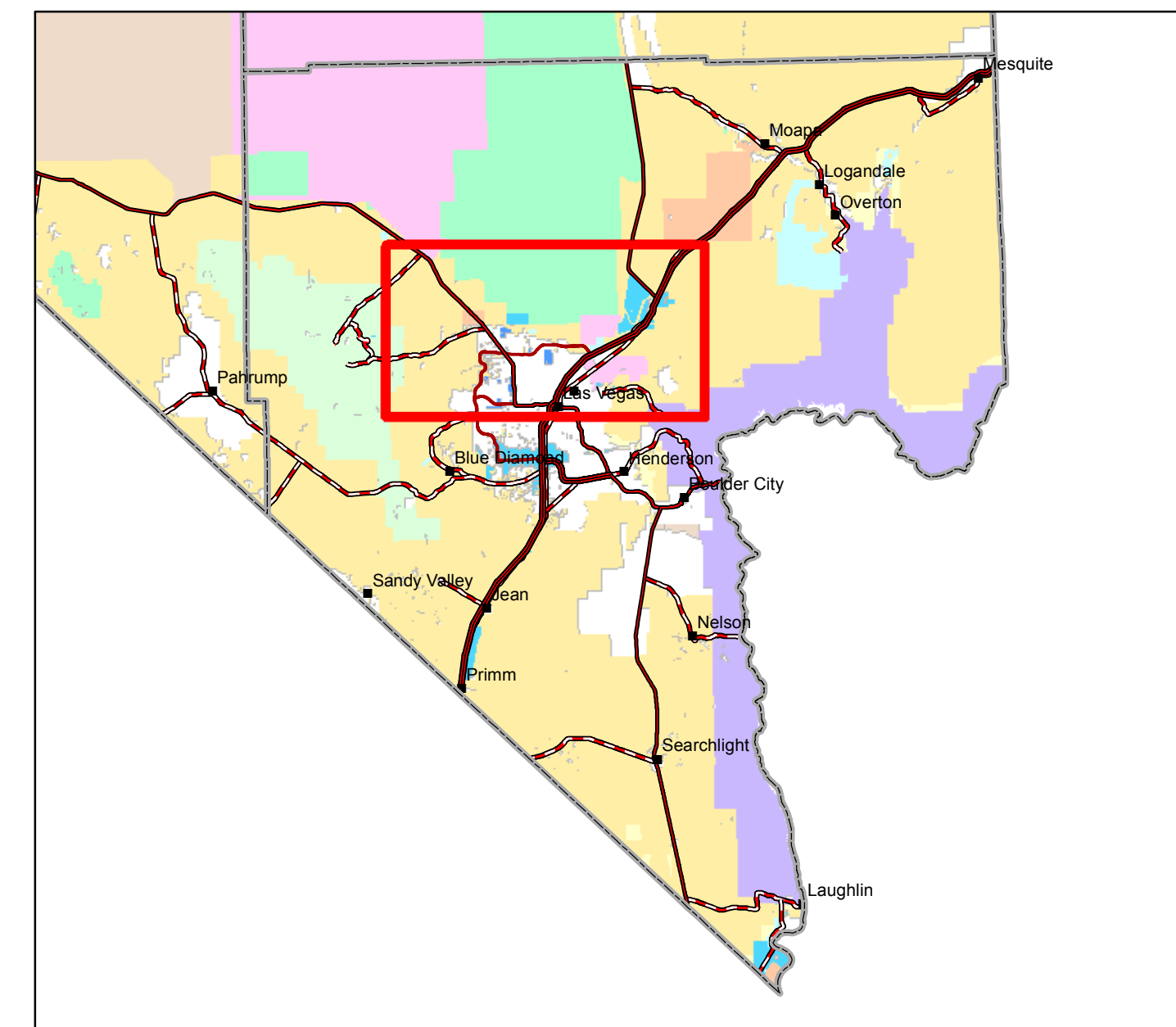
North Las Vegas Valley Overview

This map prepared at the request of Senator Harry Reid and Senator Dean Heller
November 5, 2013



Legend

- | | | | |
|--|--------------------------------------|---------------------------|---------------------------|
| Tule Springs Fossil Beds National Monument | Water Conveyance Facilities Corridor | Land Status | Department of Energy |
| SNPLMA Disposal Boundary | Eglington Plant Preserve | Bureau of Indian Affairs | Fish and Wildlife Service |
| Addition to Nellis Air Force Base | Las Vegas Annex Area | Bureau of Land Management | Forest Service |
| Las Vegas Police Shooting Range | Las Vegas Job Creation Zone | Bureau of Reclamation | National Park Service |
| North Las Vegas Job Creation Zone | Additions to Red Rock NCA | City of Las Vegas | Nevada State |
| UNLV North Campus | National Conservation Area | Clark County, NV | Private |
| BLM Withdrawn Lands | BLM Wilderness | Department of Defense | |
| Renewable Energy Transmission Corridor | BLM Wilderness Study Area | | |



No Warranty is made by the Bureau of Land Management as to the accuracy, reliability, or completeness of these data for individual use or aggregate use with other data.

0 1.25 2.5 5 Miles

This map intended to be plotted at 34 x 44

1:63,360

