

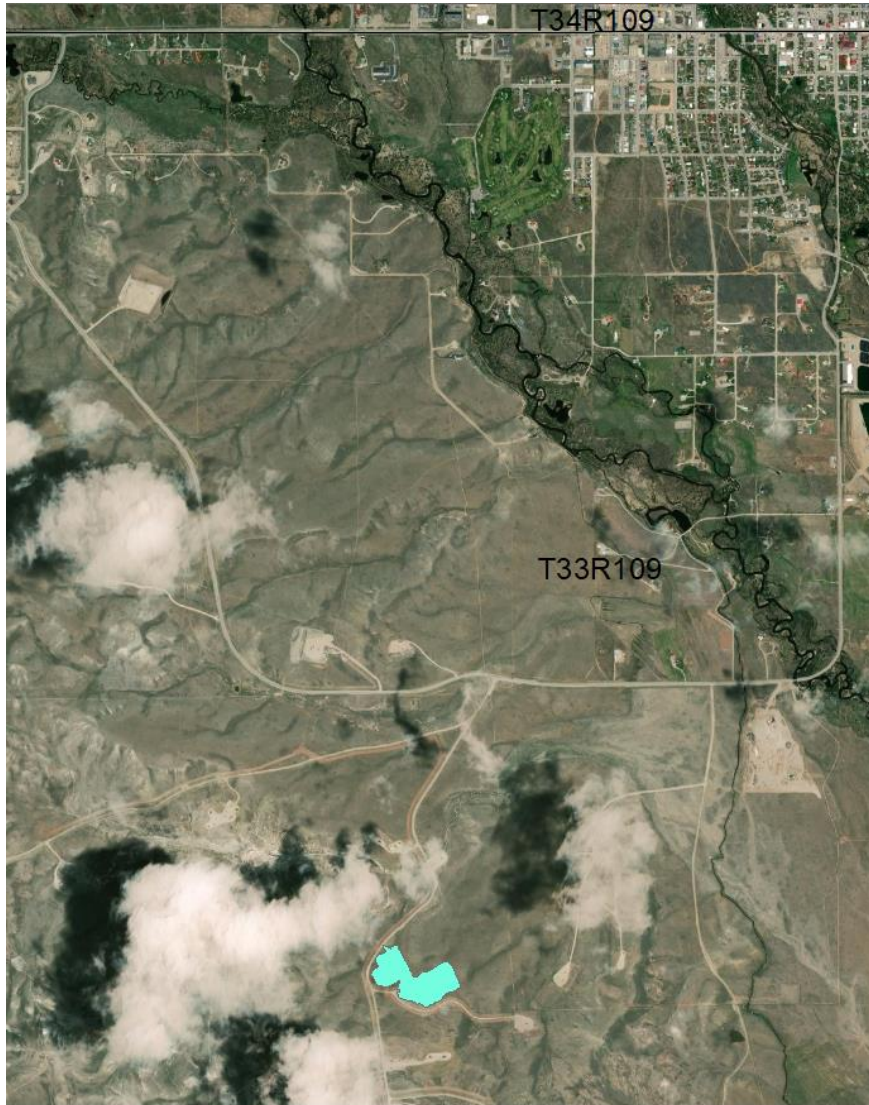


Pinedale Energy Partners Operating, LLC

PAPA 2021 Annual Meeting



2020 Development Summary



PEPO 2020 development

- No drill rig
- 4 wells completed; 1Q 2020

Total of 1208 producing wells

- On 82 well pads

Pinedale Anticline Monitoring and Mitigation Fund

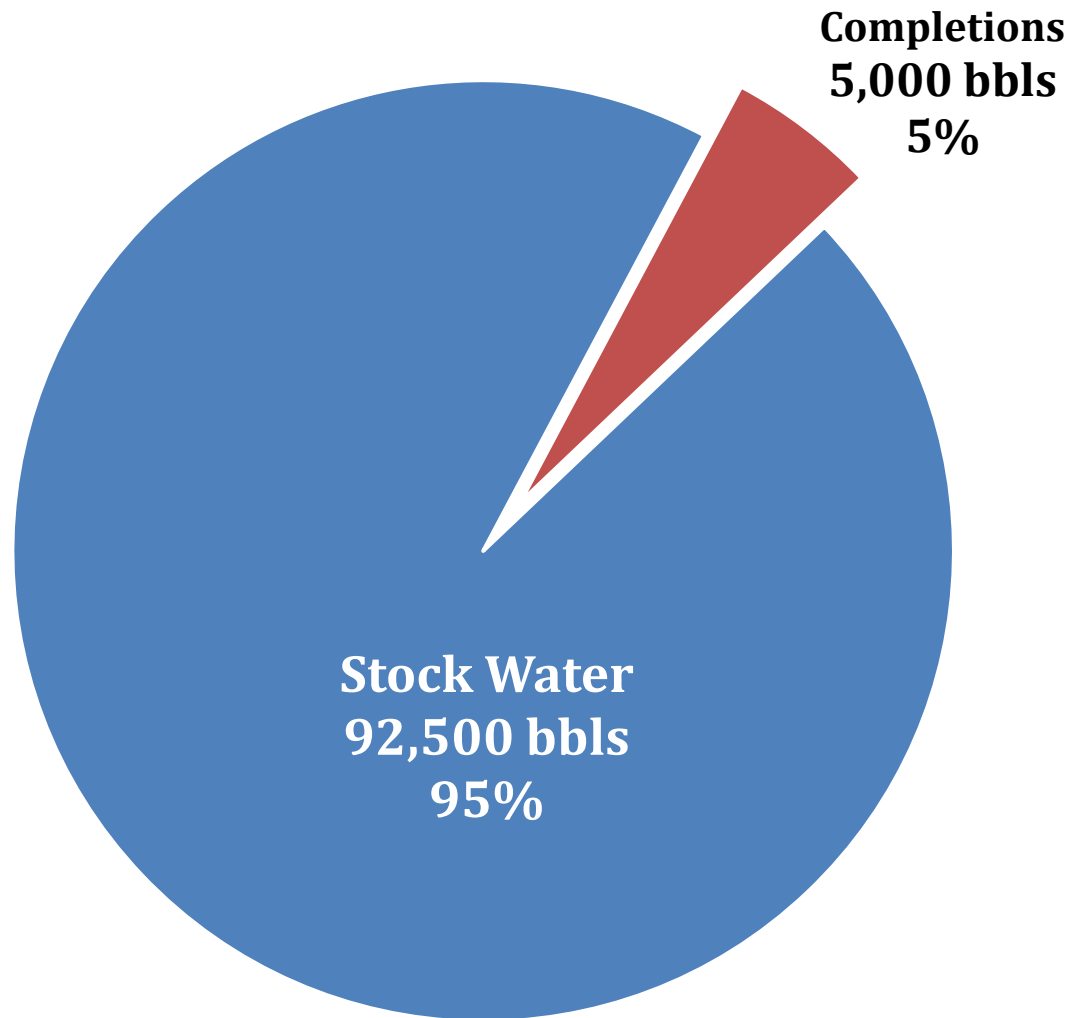
- \$97,500 paid for 13 spud wells in 2020
- \$9,526,500 paid to MMF since September 2008 ROD implementation



2020 Water Usage

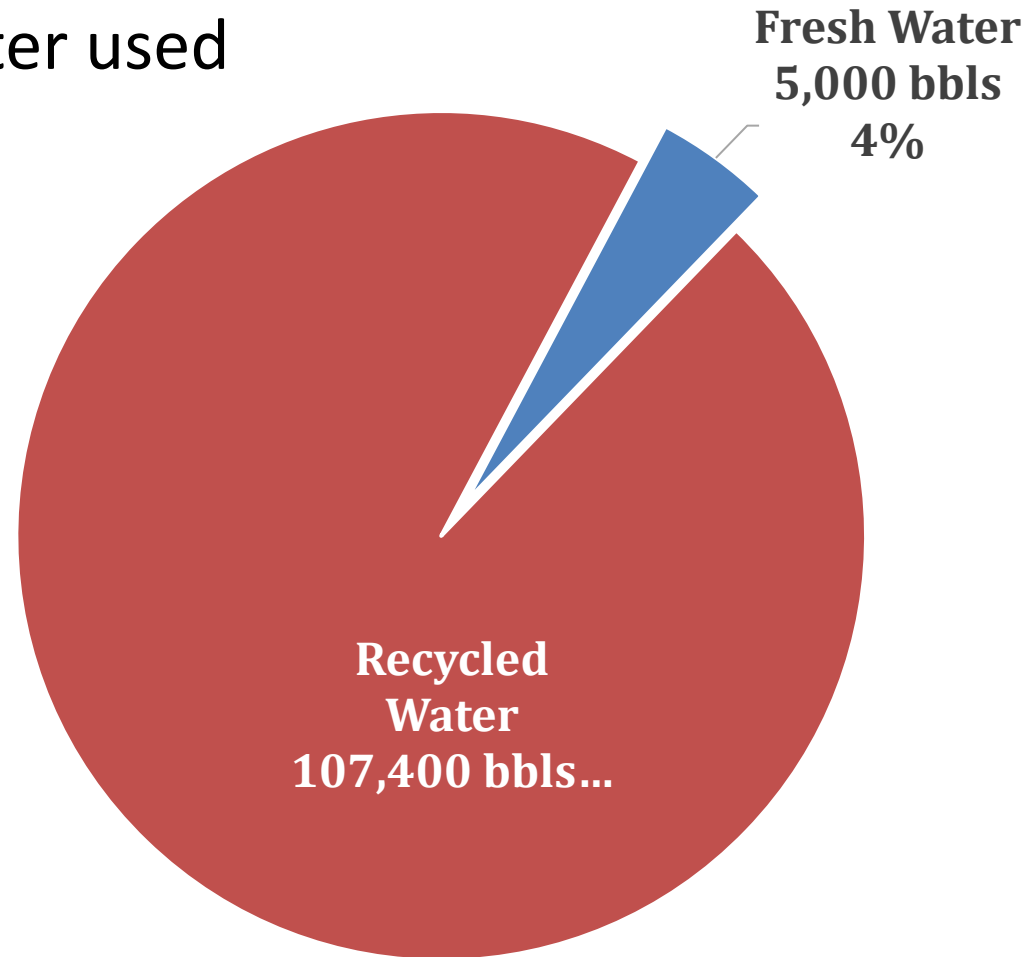
- Fresh Water Used – 97,500 bbls

- Reduction of 51% overall from 2019
 - Reduction of 87% for completions
 - Increase of 681% for stock water



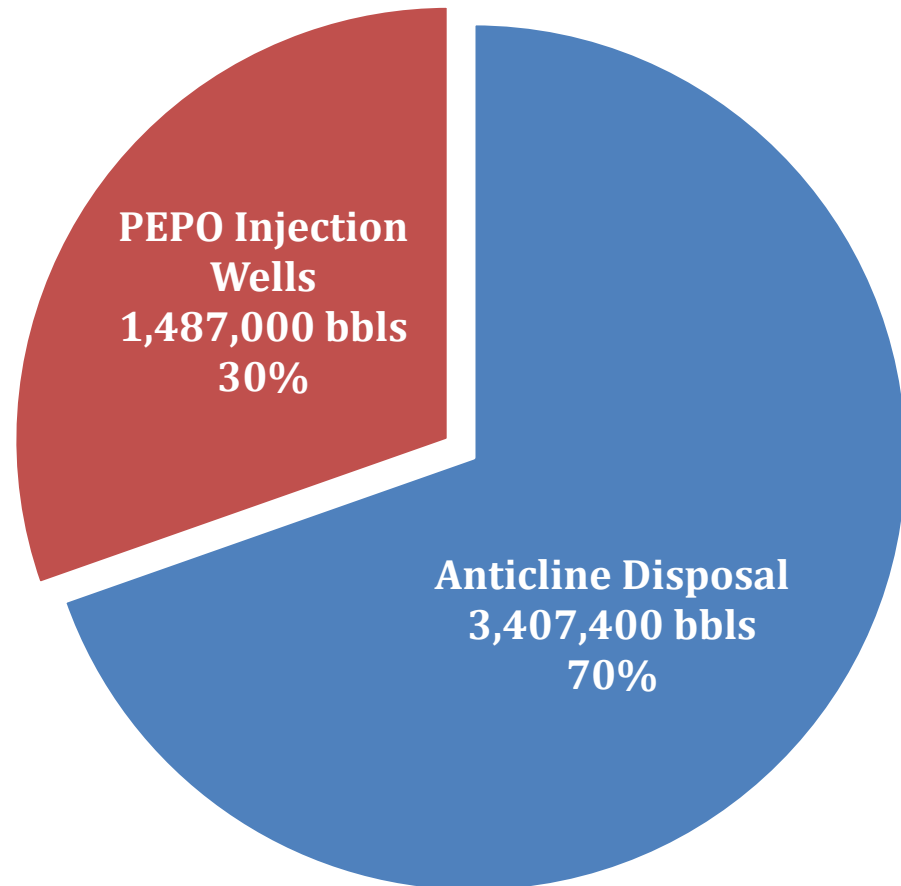
2020 Water Usage – Completion Operations

- Completions Operations
 - 112,400 bbls of water used



2020 Water Disposal

- Produced water volume – 4,894,400 bbls
 - Piped via MPLX Liquids Gathering System for disposal
 - Produced water disposed in 6 PEPO disposal wells split between two disposal facilities



Future Development Needs to Make Business Sense

Commodity Price Affects Our Decisions

Henry Hub Natural Gas Spot Price
(Dollars per Million Btu)



2021-2022 Proposed Development Plans

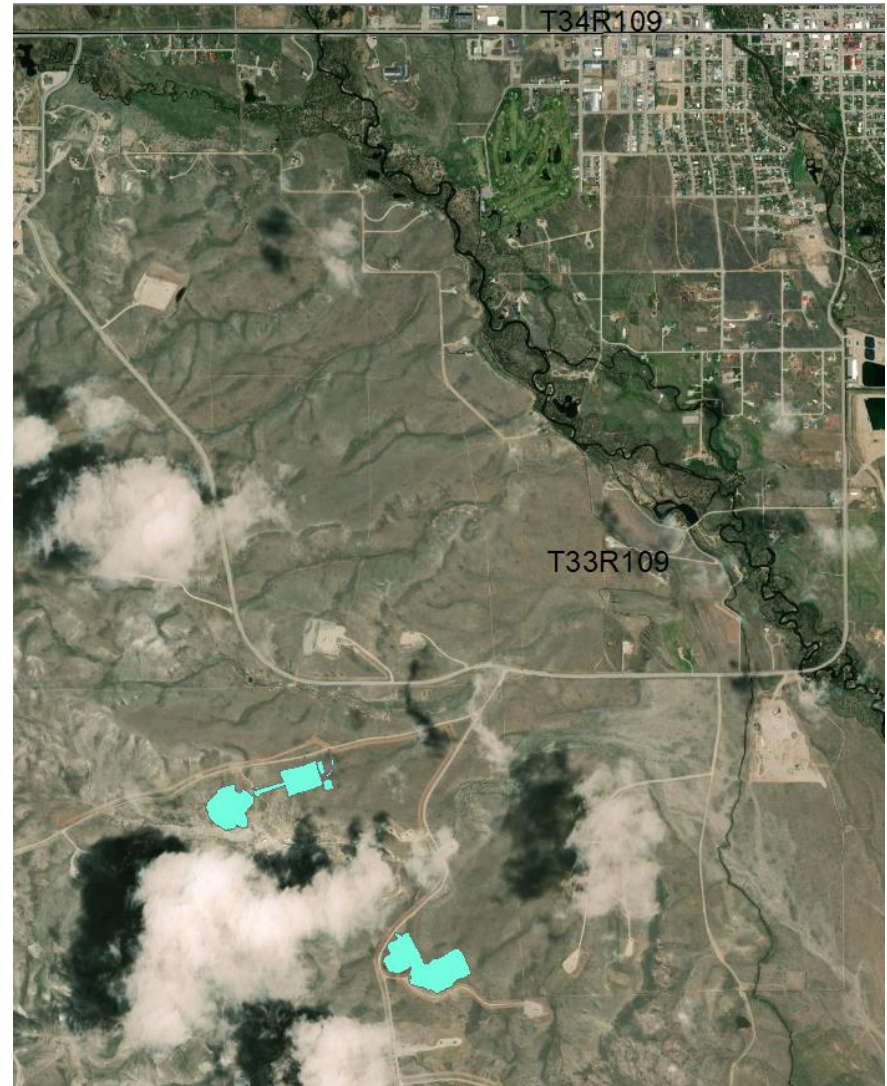
PEPO's future development activity is dependent on gas prices.

If Business Metrics are met:

- Development activity on 2 pads
 - 3rd Quarter 2021
 - Expansion of 1 pad
 - 4th Qtr 2021 – 2nd Qtr 2022
 - Single rig drill 13 wells
 - Completion operations on 13 wells

If Business Metrics not met:

- No activity



Ten Year Drilling Forecast Update

10 Year Drilling Forecast

- Anticipate approximately 64 wells drilled over 10 year period
- Anticipate addition of approximately 1 pad over 10 year period



Reclamation & Weeds

How do we take care of the land?

Review of 2020 Reclamation

No reclamation implementation on any well pad in 2020

Preplanning:

- Determine
 - Area for reclaim
 - Long term topsoil storage area
- Develop seed mix
 - Grasses
 - Forbs
 - Shrubs

2021 Implementation:

- Recontour
- Spread Topsoil
- Drill Seed



2020 Reclamation Summary & Status Report

82 Existing well pads

- 79 pads with active interim reclamation
- Pad disturbance – 1166 ac
- Pad reclamation – 800 ac (68.6%)
 - 2 pads with site stabilization – 16.58 ac
- Road disturbance – 75 ac, 2.5 ac reclaimed

2020 Reclamation Actions

- GPS disturbance of newly reclaimed areas
- Reclamation monitoring with upload to PADMS
 - Quantitative Monitoring – 17 sites
 - Qualitative Monitoring - 100% of sites



Quantitative Monitoring Results (17 Sites)

- Interim Reclamation Requirements Met
 - 16 sites meet grass count (at least 2 bunch grasses, 1 rhizomatous grass)
 - 10 sites meet shrub count equal to reference site
 - 16 sites meet 75% of total cover of the native reference vegetation
 - 5 sites meet forb count equal to reference site
 - No sites meet 75% of forb frequency of the native reference vegetation
 - 16 sites meet bare ground no more than 25%



2021 Proposed Reclamation Plans

Initiate Interim Reclamation on two pads

- SP 1-30 Pad
- SP 13-17 Pad

Conduct Reclamation Monitoring

- Qualitative
 - All sites every year
- Quantitative
 - Years 3, 5, and 8

Actively Evaluate Future Use and Reclamation Needs



Mesa 8-19 Reclamation



Weed Management

PEPO actively manages weeds on its locations

Bare Ground

- Mechanical weed removal is completed on working pad area and around well heads and facilities
- Bare ground weed spray may be applied to area immediately surrounding facilities

Noxious Weed Control

- Noxious weeds are identified as early as possible and sprayed during summer months prior to seed dispersion
 - Persistent noxious weed patches are evaluated each year and treated, as needed, to decrease patch size over time



Weed Management – Cheat Grass

PEPO actively manages weeds on its locations

Cheat grass control

- On newly planted reclamation, cheat grass is grubbed, rather than sprayed, to protect newly planted species
- On reclamation older than 3 years, cheat grass may be sprayed, or small patches may be grubbed
- Where large cheatgrass patches exist, pre-emergent spray is applied in August or September
 - Patches are identified in the field and revisited at least every other year, resulting in decreasing patch size
 - Cheat grass spraying is continued until patches are eliminated
 - Any new patches identified are added to mapped locations and sprayed at least every other year



Questions?

mcunningham@pinedaleep.com

Cell: 720-201-5944

