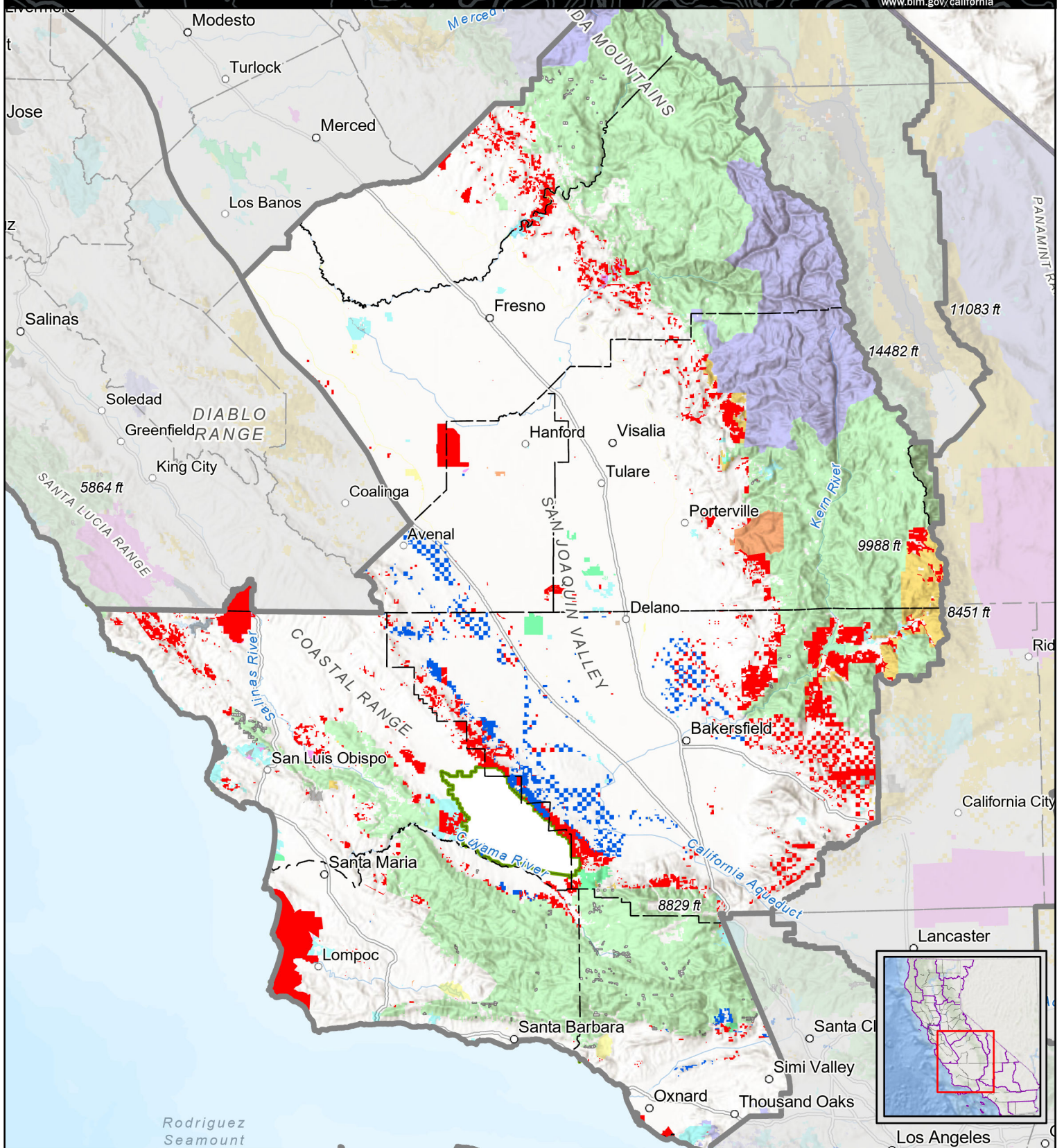


Oil & Gas Leasing and Development Supplemental NEPA

www.blm.gov/california



LEGEND:

Field Office	Oil & Gas Leases	US Forest Service	Bureau of Reclamation	Other Federal
County Boundary	Open for Leasing	National Park Service	Bureau of Indian Affairs	State
Carrizo Plain National Monument	Land Status	US Fish and Wildlife Service	Department of Defense	Local Government
	Bureau of Land Management			Private

Scale: 1:1,864,241
0 35,000 70,000 140,000 US Feet



No warranty is made by the U.S. Bureau of Land Management (BLM) for use of the data for purposes not intended by BLM. The BLM assumes no responsibility for errors or omissions. No warranty is made as to the accuracy, reliability, relevancy, timeliness, utility, or completeness of these data, maps, geographic location for individual use or aggregate use with other data; nor shall the act of distribution to contractors, partners, or beyond, constitute any such warranty for individual or aggregate data use with other data.

Path: \\blm\dfsloc\GP\CA\BKF\Projects\minerals\oil\Kern\Amendments\O&G_EA_EIS\O&G_EA_EIS.aprx

Date Revised: 4/9/2025