

REQUEST FOR COMMENT

Map Corrections for Rochat Divide-Pine Creek Special Recreation Management Area (SRMA)
Designated Motorized Routes
BLM Coeur d'Alene Field Office
DOI-BLM-ID-C010-2024-0016-DNA

This document summarizes a Bureau of Land Management (BLM) proposal to correct and clarify depicted motorized route designations on the 2007 Travel Management Plan (TMP), prepared in conjunction with the Coeur d'Alene (CDA) Resource Management Plan (RMP), "Motorized Route Designations-Silver Valley Map 4" (CDA TMP/RMP Map 4) due to increased BLM public land use, interest, and associated challenges with map interpretation. This project will only address BLM managed lands within the Rochat Divide-Pine Creek Special Recreation Management Area (SRMA) portion of the 2007 CDA TMP/RMP Map 4. The SRMA is located just south of Pinehurst, Idaho and encompasses BLM managed lands in Benewah, Kootenai, and Shoshone Counties (see attached maps). While this proposal would provide clarification on route designations identified in the TMP, the map also served as a supporting component for area designations specified in the RMP.

[43 CFR 1610.5-4](#) states; Resource management plans and supporting components shall be maintained as necessary to reflect minor changes in data. Such maintenance is limited to further refining or documenting a previously approved decision incorporated in the plan. Maintenance shall not result in expansion in the scope of resource uses or restrictions, or change the terms, conditions, and decisions of the approved plan. Maintenance is not considered a plan amendment and shall not require the formal public involvement and interagency coordination process described under [§§ 1610.2](#) and [1610.3 of this title](#) or the preparation of an environmental assessment or environmental impact statement. Maintenance shall be documented in plans and supporting records.

The BLM will prepare a Determination of NEPA Adequacy (DNA) to document whether the environmental effects of the proposal will be essentially the same as those analyzed in the Proposed Resource Management Plan/Final Environmental Impact Statement, and we also invite public comments for consideration in our map corrections.

Background

After the decision approving implementation of the 2007 CDA TMP/RMP, it was identified both internally and externally that the CDA TMP/RMP Map 4 did not uniformly communicate travel and transportation restriction requirements to public visitors clearly and effectively. Subsequently, an informal revised map ("BLM Recreation Access Map, Rochat Divide-Pine Creek Area") dated January 2008, was circulated in the local community by the BLM with the intent to correct the 2007 CDA TMP/RMP Map 4. However, the 2008 map did not adhere to a proper vetting and approval process. It was not consistent with designations and did not amend the 2007 CDA TMP/RMP Map 4 for the Rochat Divide-Pine Creek SRMA.

The inconsistency with maps supplied to the public has led to interpretative challenges. Motorized route designations on 2007 CDA TMP/RMP Map 4; identifies motorized vehicle travel as "limited" to designated roads and trails on BLM managed lands, except within areas designated as "closed". Routes not designated are managed as closed to public motorized uses. BLM Law Enforcement Officers have expressed challenges to provide effective education and enforcement measures related to route designations without proper publication of a corrected motorized designations use map for the SRMA.

Proposed Action

The BLM proposes to uniformly clarify the motorized route designations and associated restrictions for visitor use within the Rochat Divide-Pine Creek SRMA. This motorized route map will replace the Rochat Divide-Pine Creek SMRA portion of 2007 CDA TMP/RMP Map 4. The corrected map will provide consistency with map interpretation, common signage, trespass concerns, general education and enforcement efforts. The purpose of this map is to show routes open for motorized activity by season and class of use.

The proposed action would not alter any decisions made from the analysis of the 2007 CDA TMP/RMP and is strictly an administrative effort to aid the public in interpreting route designations for the Rochat Divide-Pine Creek SMRA and is in compliance with the 2007 CDA TMP/RMP Record of Decision.

The proposed action is in conformance with the applicable RMP because it is specifically provided for in the following RMP decision(s):

1. **Action RC-1.5.1** “Providing primarily indirect management controls apparent mostly at trailhead access points.” (Page 52, Record of Decision and Approved Coeur d’Alene Resource Management Plan)
2. **Action TM-1.1.9** “...uniformly communicate travel and transportation closure and restriction requirements to public land visitors through the publication common maps, the use of consistent signs, and other coordinated means.” (Page 57, Record of Decision and Approved Coeur d’Alene Resource Management Plan)

Map Corrections

The proposed action corrects errors in the 2007 CDA TMP/RMP Map 4 for the Rochat Divide-Pine Creek SRMA. Edits include updating the map to current BLM cartographic standards that display route designation in conformance with the 2007 CDA TMP/RMP, consistency with the 2015 Rochat-Pine Creek SRMA route inventory, and current BLM held public rights-of-ways (ROW) and easements that provide legal public access. Map clarifications would uniformly disclose that non-designated routes are closed to motorized uses; motorized cross-country travel is prohibited, except for snowmobiles; and snowmobiles are limited to designated motorized routes within special designated areas. The corrected map would uniformly identify travel and transportation restrictions on BLM managed lands by season of use, vehicle class, special designated area boundary, and ownership.

The following map maintenance corrections address travel restriction clarity.

- Expired or misidentified rights-of-way (ROWs) are no longer displayed on the map. Newly acquired ROWs are added and displayed on the corrected map.
- Nomenclature corrections for user clarity.
- Map legend and route restrictions table to be consistent with area of focus and map symbology updates.
 - Removed “limited” designations that do not apply to the motorized routes that are within the Rochat Divide-Pine Creek SRMA (Route Restrictions 8,20,21,22,23,25,26).
 - Removed the terms “Proposed Federal Land Management Highway”, “Trail”, “Unimproved Road”, and “Light Duty Road”.
- Designated motorized routes were corrected to be in conformance with 2007 CDA TMP/RMP, and ground verified by the 2015 motorized route inventory for the Rochat Divide-Pine Creek SRMA. Motorized routes that were verified to not exist on the ground from the 2015 motorized route ground verification inventory are no longer displayed on the corrected map.
- Routes without designations are not displayed (i.e. closed routes, unimproved roads that are closed yearlong).

Public Input Requested

Federal actions must be analyzed in accordance with the National Environmental Policy Act (NEPA) and other relevant Federal and State laws and regulations to determine potential environmental consequences.

The purpose of this document is to inform interested and affected parties of the proposal and to solicit comments to assist with the NEPA review of the proposal. As previously mentioned, the BLM will document our analysis of the proposal in a DNA. Comments received in response to this solicitation may be used to identify accuracy and correct issues related to the proposed action in accordance with the DNA. The DNA expresses adequacy of existing NEPA; the analysis doesn't change during preparation.

The BLM will also use this public participation opportunity under the NEPA to assist the agency in satisfying the public involvement requirements under Section 106 of the National Historic Preservation Act (NHPA) (16 U.S.C. 470(f)) pursuant to 36 CFR 800.2(d)(3). The information about historic and cultural resources within the area potentially affected by the proposed action will assist the BLM in identifying and evaluating impacts to such resources in the context of both NEPA and Section 106 of the NHPA.

The BLM will consult with Indian tribes on a government-to-government basis in accordance with Executive Order 13175 and other policies. Tribal concerns, including impacts on Indian trust assets and potential impacts to cultural resources, will be given due consideration.

We invite Federal, State, and local agencies, as well as tribes and other stakeholders interested in, or affected by the map corrections to participate in this request for comments.

The BLM invites comments from the public on the proposed corrections. Comments made on this proposal would be **most helpful if they are received by** December 6, 2024, and are directly relevant to the project area.

Comments may be submitted through the project eplanning website at <https://eplanning.blm.gov/eplanning-ui/project/2034711/510>. Please identify whether you are submitting comments as an individual or as the designated spokesperson on behalf of an organization. Issues that are outside the scope of the proposal will not be addressed at this planning level.

Before including your address, phone number, e-mail address, or other personal identifying information in your comment, be advised that your entire comment – including your personal identifying information – may be made publicly available at any time. While you can ask us in your comment to withhold from public review your personal identifying information, we cannot guarantee that we will be able to do so.

Contact

The primary contact for this proposal is **Jake Bachtel, Outdoor Recreation Planner**.

For questions on the project or for assistance submitting comments, please contact the Coeur d'Alene Field office at (208) 769-5000.

Attachments

Attachment 1: Motorized Route Designations-Silver Valley Map 4 (May 2007)

Attachment 2: 2024 Rochat Divide-Pine Creek SRMA Map Correction for 2007 Motorized Route Designations-Silver Valley Map 4.

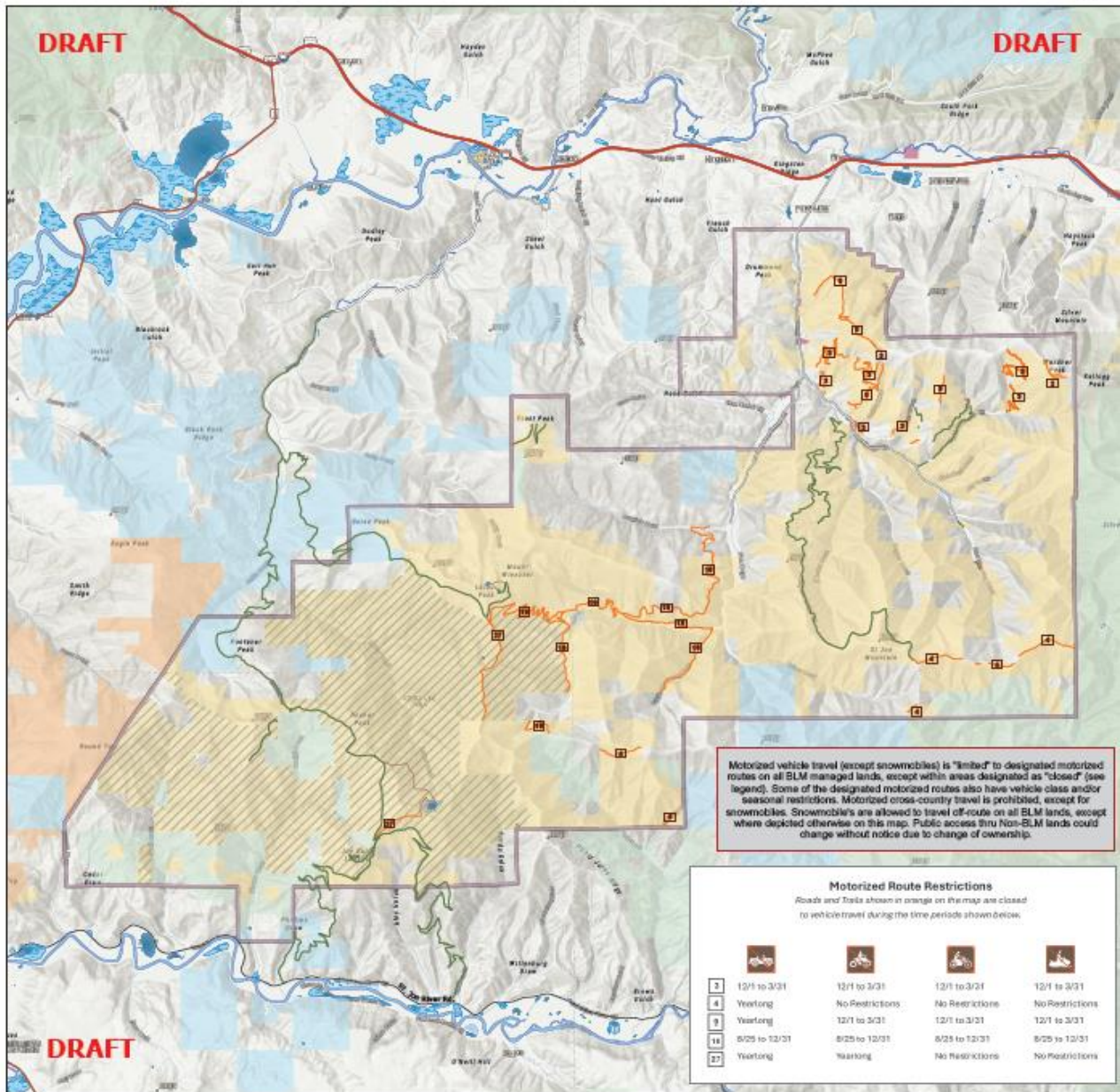
Attachment 2: 2024 Rochat Divide-Pine Creek SRMA Map Corrections for 2007 RMP Motorized Route Designations-Silver Valley Map 4



2024 Rochat Divide-Pine Creek SRMA Map Correction for 2007 RMP Motorized Route Designations-Silver Valley Map 4

Bureau of Land Management
Coeur d'Alene Field Office
3232 Nursery Rd
Coeur d'Alene, ID 83815
(208) 769-5000

11/13/24



Legend

- Interstate
- County Road
- Designated Route/Trail (Open year round to all motorized vehicles)
- Designated Route/Trail with Restrictions
- Trail Open to Non-Motorized
- Rochat Divide/Pine Creek SRMA
- Travel Area Designation
- Closed to All Motorized Vehicles
- Motorized Vehicles, Except Snowmobiles, Limited to Designated Routes
- Motorized Vehicles, Including Snowmobiles, Limited to Designated Routes
- Surface Managed Agency
- Bureau of Land Management (BLM)
- USDA Forest Service
- Bureau of Indian Affairs
- State Land
- Private Land / Unknown Ownership

Scale: 0 to 1 Miles / 0 to 1 Kilometers

No warranty is made by the Bureau of Land Management as to the accuracy, reliability, or completeness of this map or the data displayed. The BLM does not assume any liability for the use of this map or the data displayed.