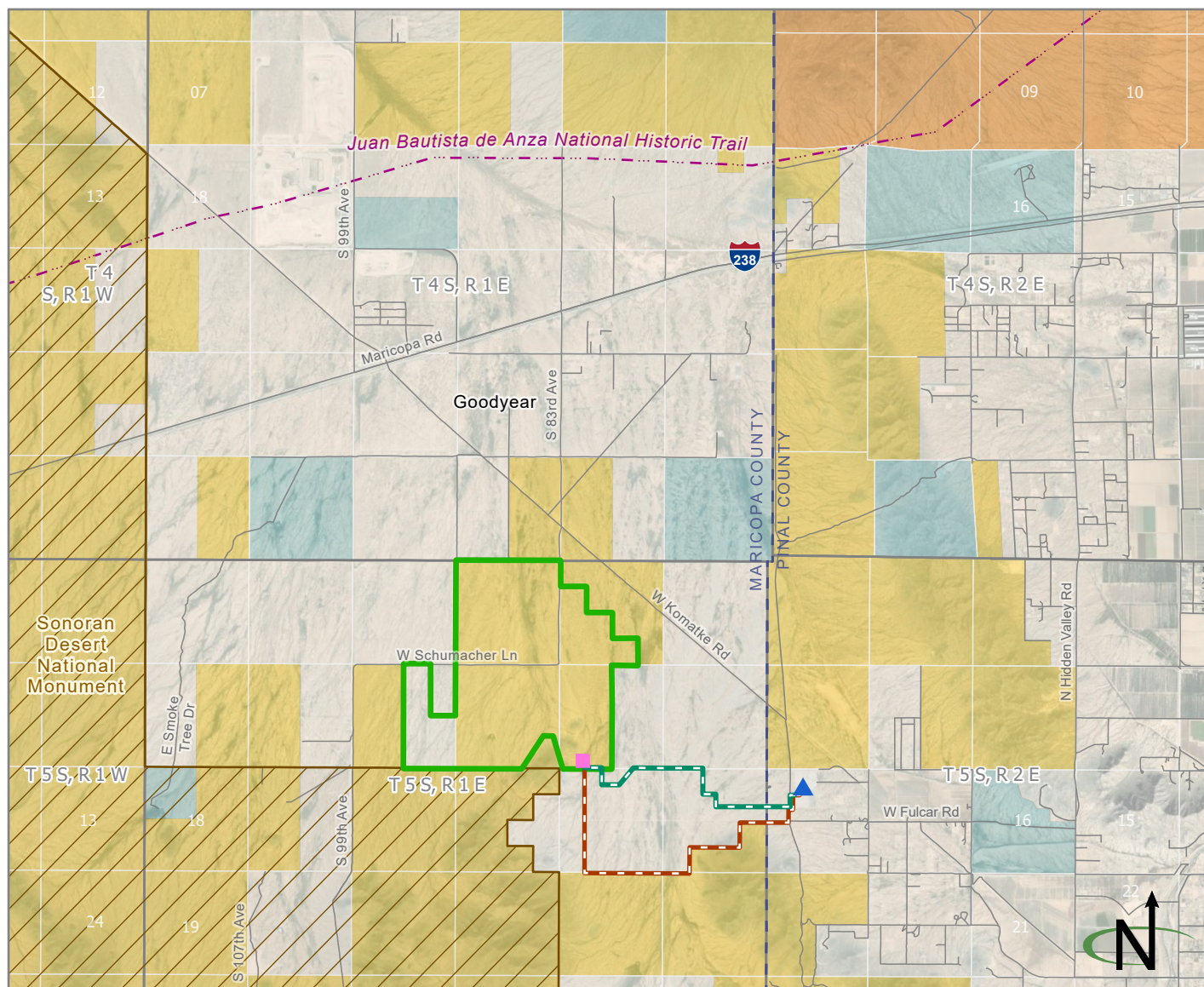


# Pinyon Solar Project

Phoenix District - Lower Sonoran Field Office



## Renewable Energy Project

- Proposed Pinyon Solar Project
- Project substation
- Pinal West 345 kV substation
- Pinyon gen-tie preferred route
- Pinyon gen-tie alternative route

## National Conservation Lands

- National scenic and historic trail
- National monument

## Transportation

- Road

## Cadastral

- Township/range
- Section

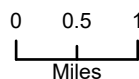
## Surface Management Agency

- Bureau of Land Management
- State
- Private
- Bureau of Indian Affairs



U.S. DEPARTMENT OF THE INTERIOR

**BUREAU OF LAND  
MANAGEMENT**



Source: BLM GIS 2022  
U.S. Department of the Interior, Bureau of Land Management  
December 20, 2023, PinyonSolar\_Rpts\_Scoping\_Mailing.mxd  
No warranty is made by the Bureau of Land Management as to  
the accuracy, reliability, or completeness of these data for  
individual use or aggregate use with other data. Decisions in this  
document only apply to BLM lands. Routes depicted on non-BLM  
lands are displayed for information purposes only and do not  
grant access to non-BLM lands.