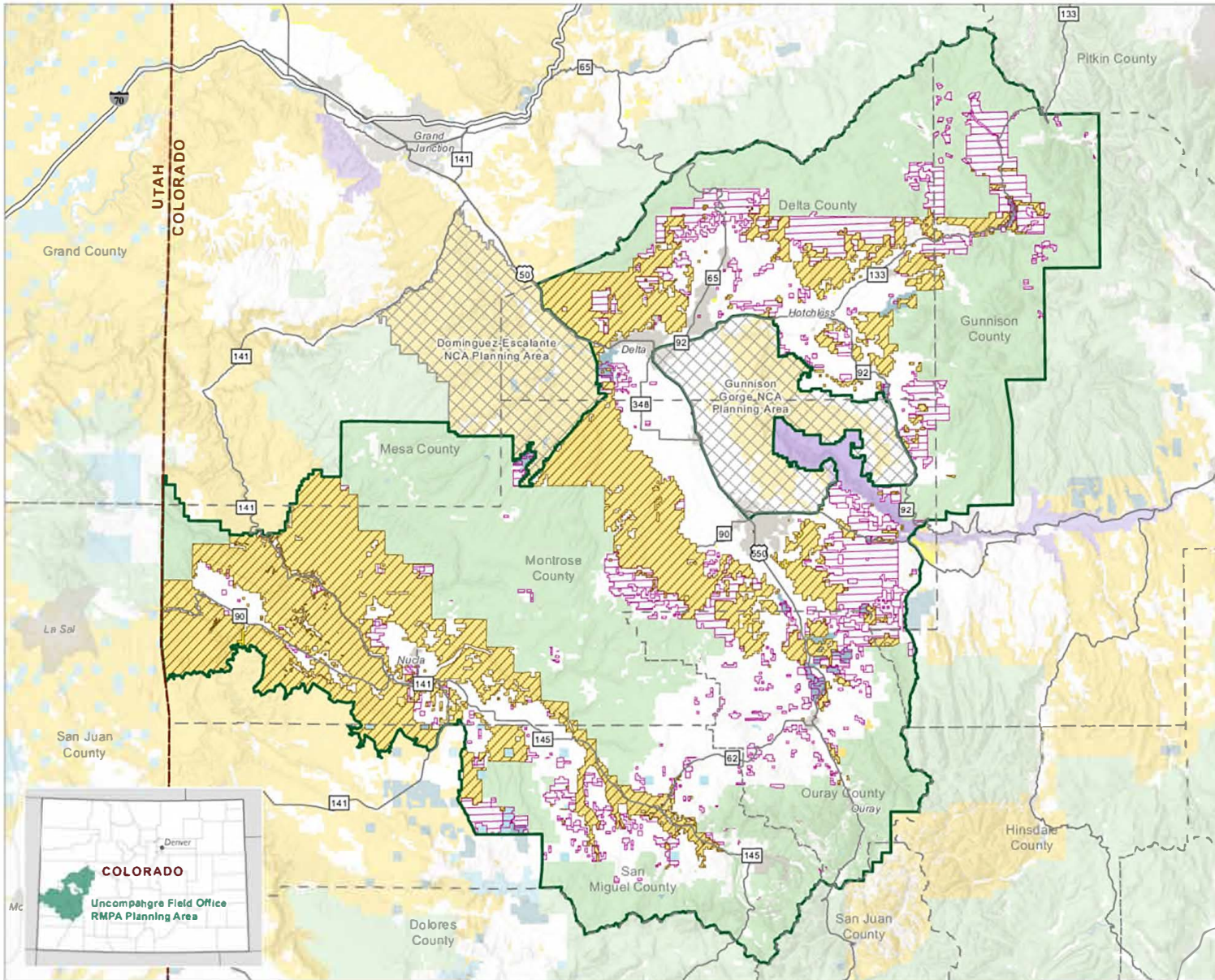


Uncompahgre Field Office RMP Amendment Decision Area



- Decision area
- Uncompahgre Field Office RMP Amendment planning area
- BLM-administered lands outside the planning area



No warranty is made by the Bureau of Land Management as to the accuracy, reliability, or completeness of these data for individual use or aggregate use with other data, or for purposes not intended by the BLM. Spatial information may not meet National Map Accuracy Standards. This information is subject to change without notification.



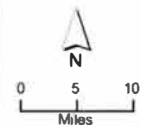
Federal Mineral Estate in the Decision Area

-  BLM surface/Federal mineral estate
-  Split-estate

-  Uncompahgre Field Office RMP Amendment planning area
-  BLM-administered lands outside the planning area

Surface Management

-  Bureau of Land Management
-  US Forest Service
-  National Park Service
-  Bureau of Reclamation
-  Other Federal
-  State
-  County and local areas
-  Private
-  Private, Incorporated place



No warranty is made by the Bureau of Land Management as to the accuracy, reliability, or completeness of these data for individual use or aggregate use with other data, or for purposes not intended by the BLM. Spatial information may not meet National Map Accuracy Standards. This information is subject to change without notification.