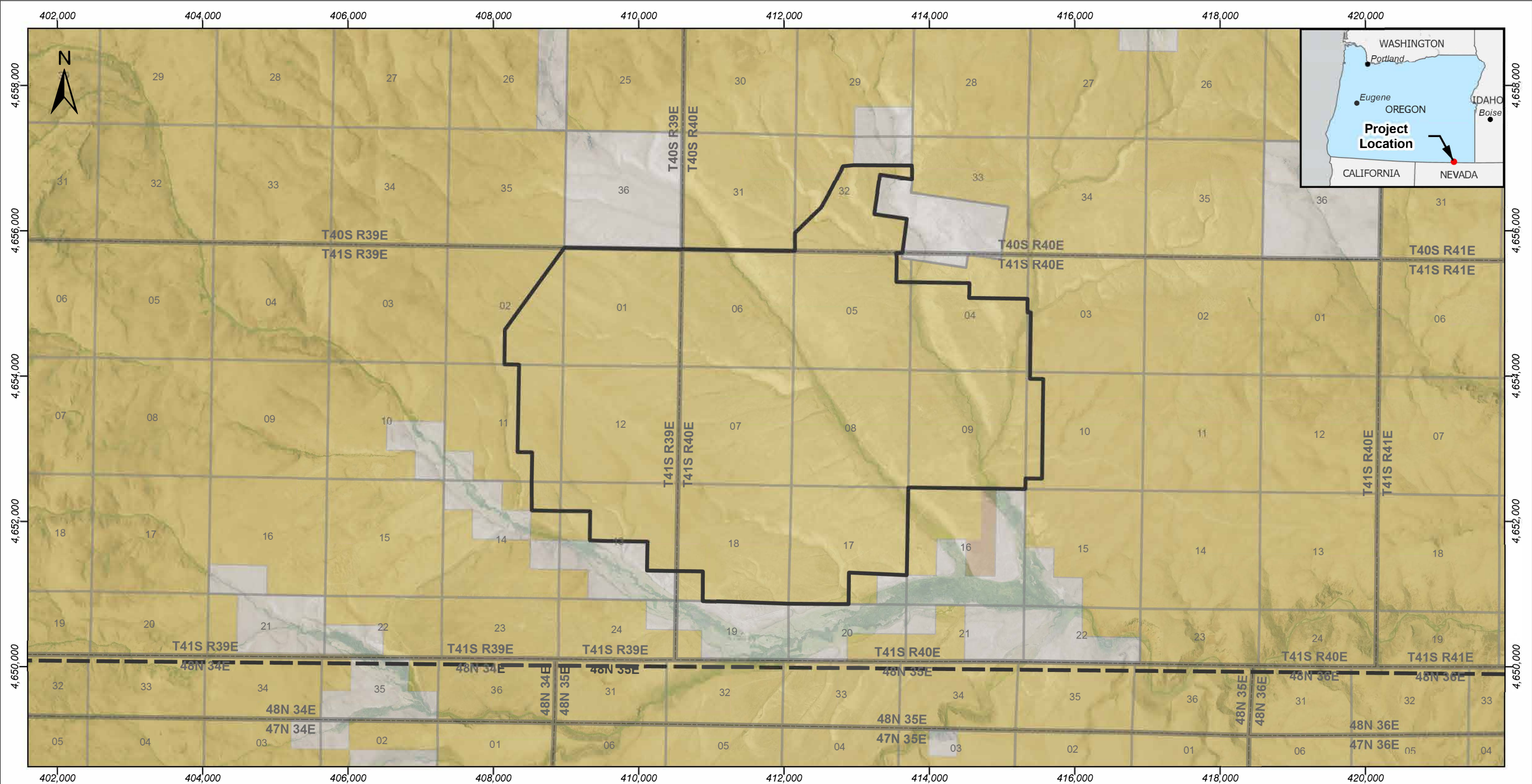


<div>LEGEND:</div> <div><div><div></div>Project Area</div><div><div></div>Paved Road</div><div><div></div>Unpaved Road</div><div><div></div>State Boundary</div></div>	<div>JINDALEE LITHIUM</div>	COORDINATE SYSTEM:		NOTES:		DATE:		HITECH MINERALS INC.
		Coordinate System: NAD 1983 UTM Zone 11N Projection: Transverse Mercator Datum: North American 1983 Units: Meter				9/18/2024		
	<div><div>SLR</div><div>UES</div></div>	SCALE WHEN PRINTED AT 11X17:		DRAWN BY:	APPROVED BY:	PROJECT #:		MCDERMITT EXPLORATION PROJECT
		<div><div>Miles</div><div><div></div><div>0</div><div>1</div><div>2</div></div><div>1:90,000</div></div>		CPD	JSC	123.V20463.00001		



LEGEND:

Land Administrator

Public Land (BLM)

State Land

Private Land

Project Area

Township & Range

Section

State Boundary

JINDALEE

LITHIUM

SLR

UES

COORDINATE SYSTEM:

Coordinate System: NAD 1983 UTM Zone 11N
Projection: Transverse Mercator
Datum: North American 1983
Units: Meter

SCALE WHEN PRINTED AT 11X17:

Miles

00.51

1:50,000

NOTES:

DRAWN BY:

CPD

APPROVED BY:

JSC

DATE:

9/18/2024

PROJECT #:

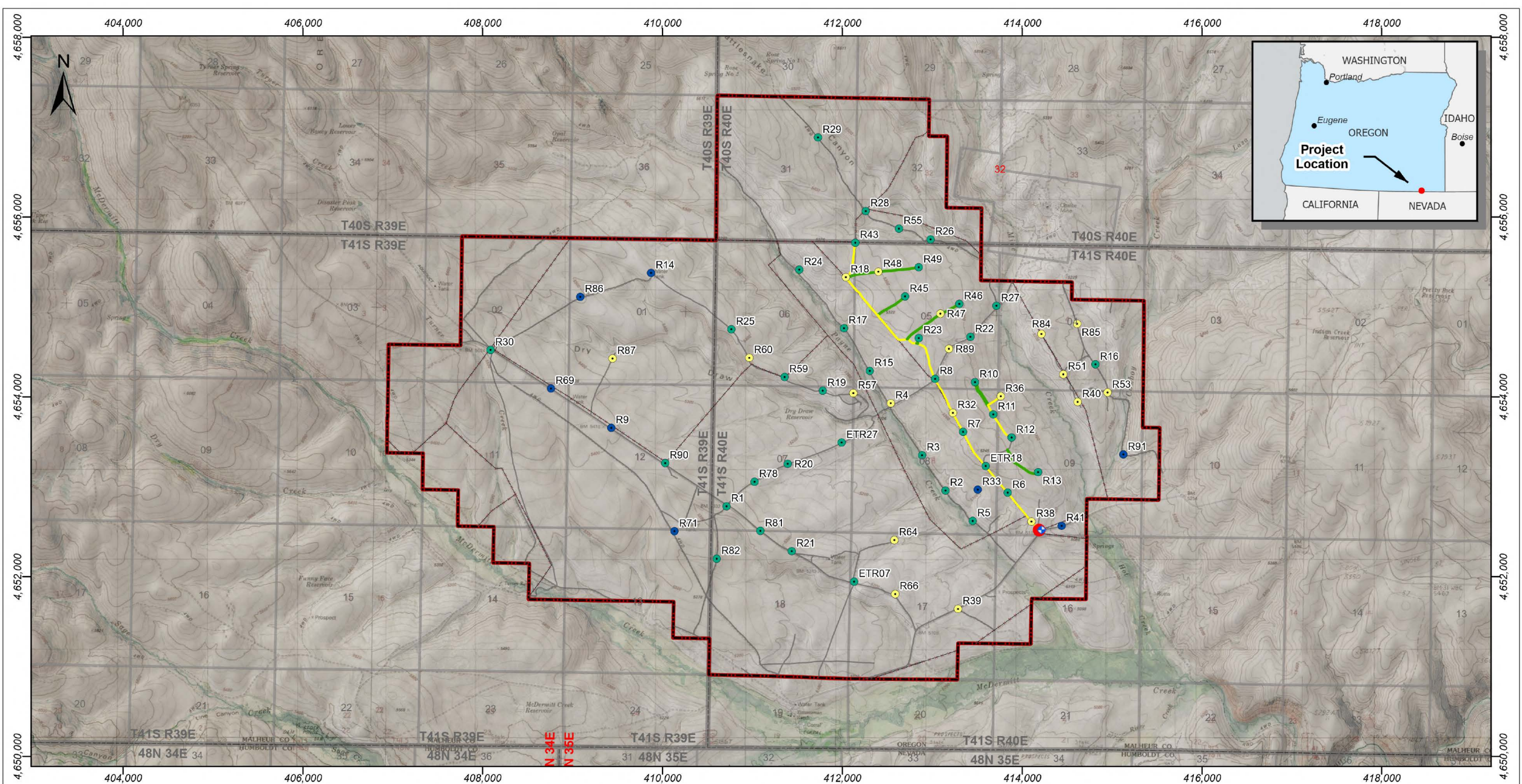
123.V20463.00001

HITECH MINERALS INC.

MCDERMITT EXPLORATION PROJECT

FIGURE 2: LAND ADMINISTRATORS
WITH PROJECT AREA

C:\Users\ldickes\OneDrive - SLR Consulting Limited\Sharepoint Project Links\General - HiTech - McDermitt Mine\GIS\Maps\SLR\SLR Revised - McDermitt_EPO_v03_Figures_1_to_9\maps\McDt_EPO_v03_Figures1-9.aprx



LEGEND:

Drill Site Status

- Authorized - Undisturbed
- Reclaimed - Unreleased
- Reclaimed - Released

Road Segment Status

- Reclaimed - Unreleased
- Reclaimed - Released

● Supply Well

● Existing Laydown

— Pre-1981 Roads within Notice area

— Reclaimed and Released Access

--- Existing Fences - Pre-1981

▭ Notice Boundary

JINDALEE LITHIUM

SLR

UES

COORDINATE SYSTEM:

Coordinate System: NAD 1983 UTM Zone 11N
Projection: Transverse Mercator
Datum: North American 1983
Units: Meter

SCALE WHEN PRINTED AT 11X17:

0 0.5 1 Miles

1:40,000

NOTES:

DRAWN BY: CPD

APPROVED BY: JSC

DATE:

9/20/2024

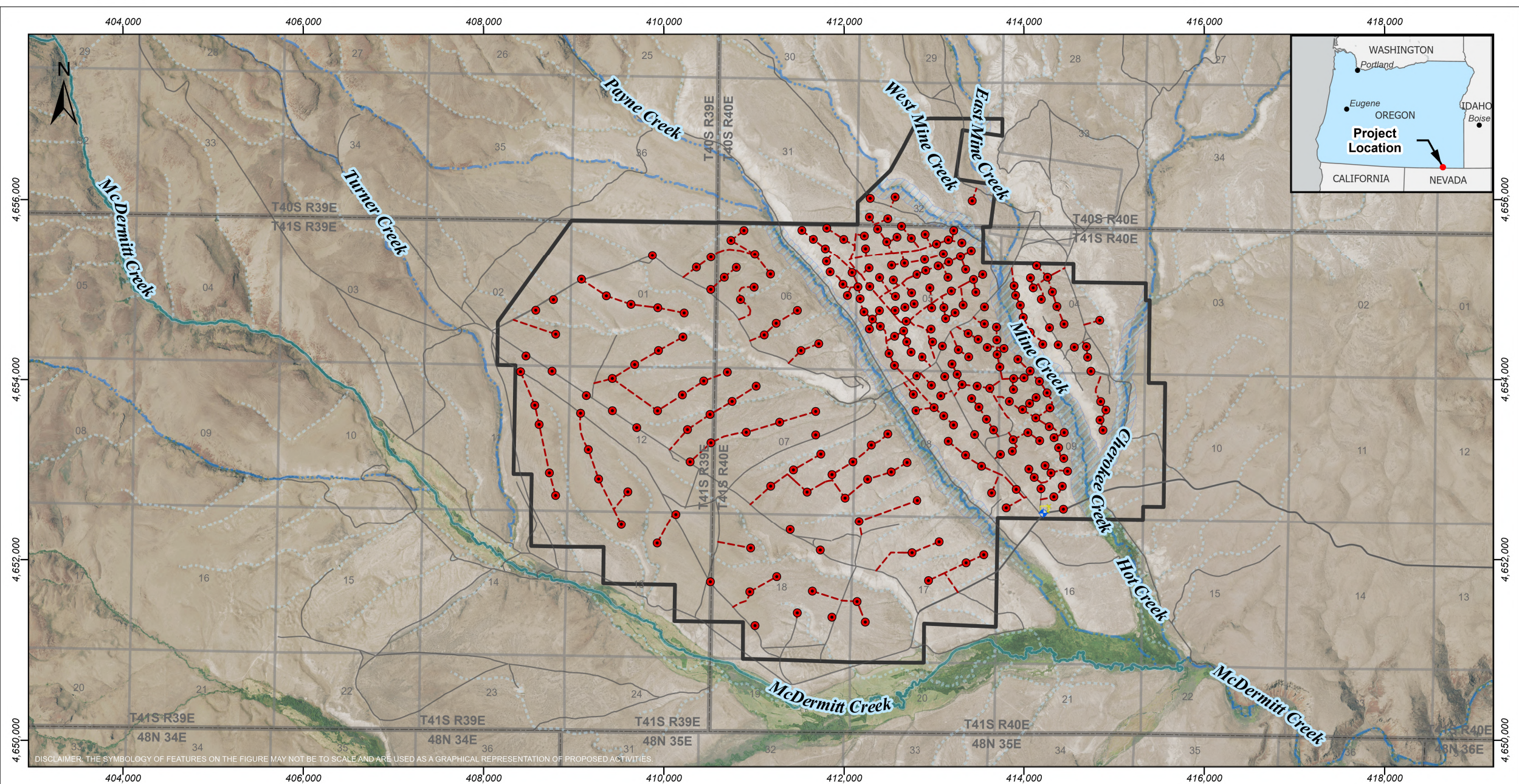
PROJECT #:

123.V20463.00001

HITECH MINERALS INC.

MCDERMITT EXPLORATION PROJECT

FIGURE 3: NOTICE LEVEL ACTIVITY WITH PROJECT AREA



LEGEND:

- Project Area
- Proposed Drill Site
- Proposed Drill Site Access Road
- Supply Well
- Proposed Laydown Area Expansion
- Riparian Avoidance
- Roads

COORDINATE SYSTEM:

Coordinate System: NAD 1983 UTM Zone 11N
Projection: Transverse Mercator
Datum: North American 1983
Units: Meter

SCALE WHEN PRINTED AT 11X17:

1:40,000

NOTES:

NO PROPOSED DISTURBANCE REPRESENTED ON THIS FIGURE INTERSECTS THE RIPARIAN AVOIDANCE (MINIMUM 300FT).

DRAWN BY:	APPROVED BY:	PROJECT #:
CPD	JSC	123.V20463.00001

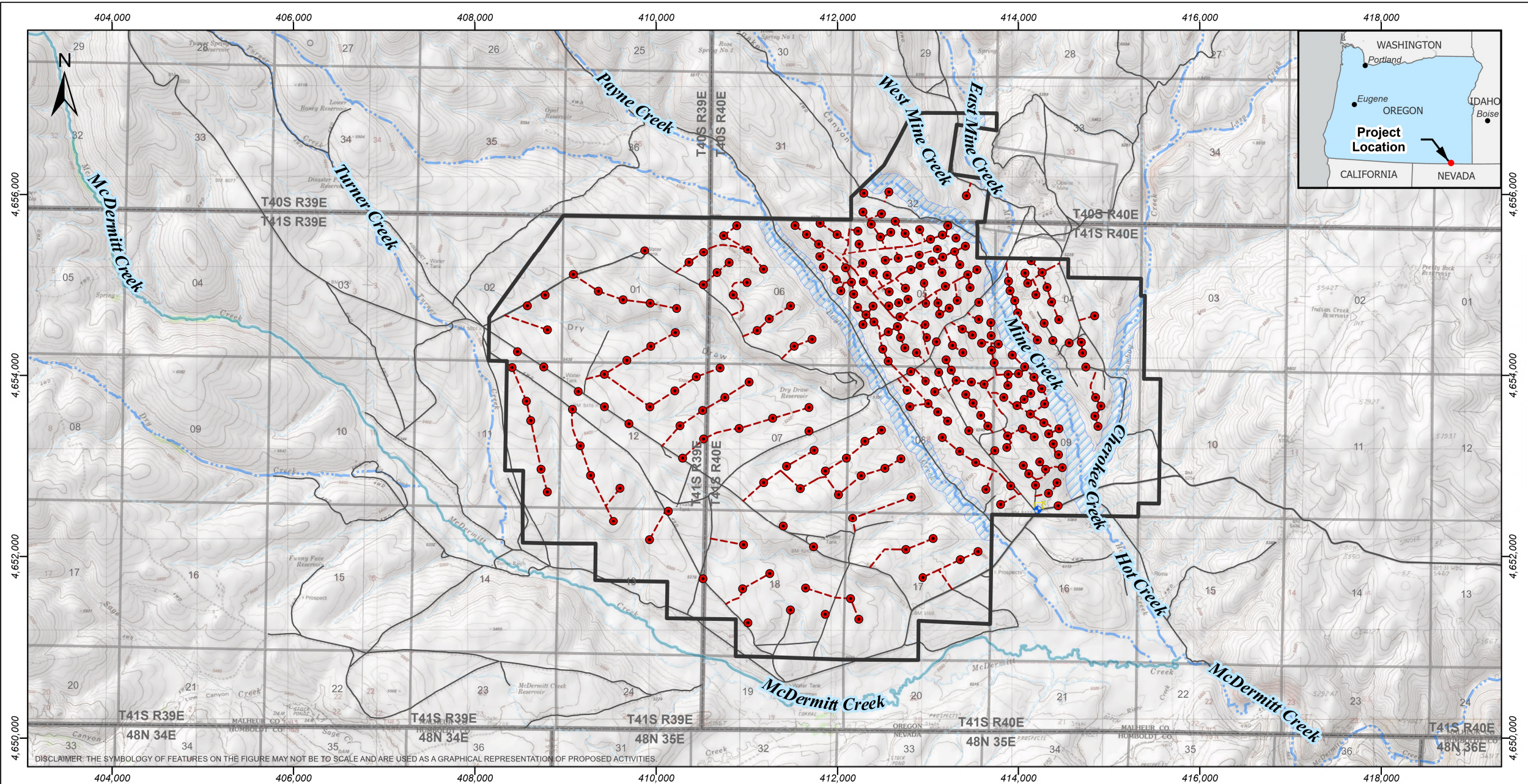
DATE:

3/25/2025

HITECH MINERALS INC.

MCDERMITT EXPLORATION PROJECT

FIGURE 4: PROPOSED EXPLORATION DRILLING WITH IMAGERY



DISCLAIMER: THE SYMBOLOGY OF FEATURES ON THE FIGURE MAY NOT BE TO SCALE AND ARE USED AS A GRAPHICAL REPRESENTATION OF PROPOSED ACTIVITIES.

- LEGEND:
- Project Area
 - Proposed Drill Site
 - Proposed Drill Site Access Road
 - Supply Well
 - Proposed Laydown Area Expansion
 - Riparian Avoidance
 - Roads

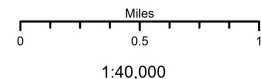
JINDALEE
LITHIUM



COORDINATE SYSTEM:

Coordinate System: NAD 1983 UTM Zone 11N
Projection: Transverse Mercator
Datum: North American 1983
Units: Meter

SCALE WHEN PRINTED AT 11X17:



NOTES:

NO PROPOSED DISTURBANCE
REPRESENTED ON THIS FIGURE
INTERSECTS THE RIPARIAN
AVOIDANCE (MINIMUM 300FT).

DRAWN BY:

CPD

APPROVED BY:

JSC

DATE:

3/25/2025

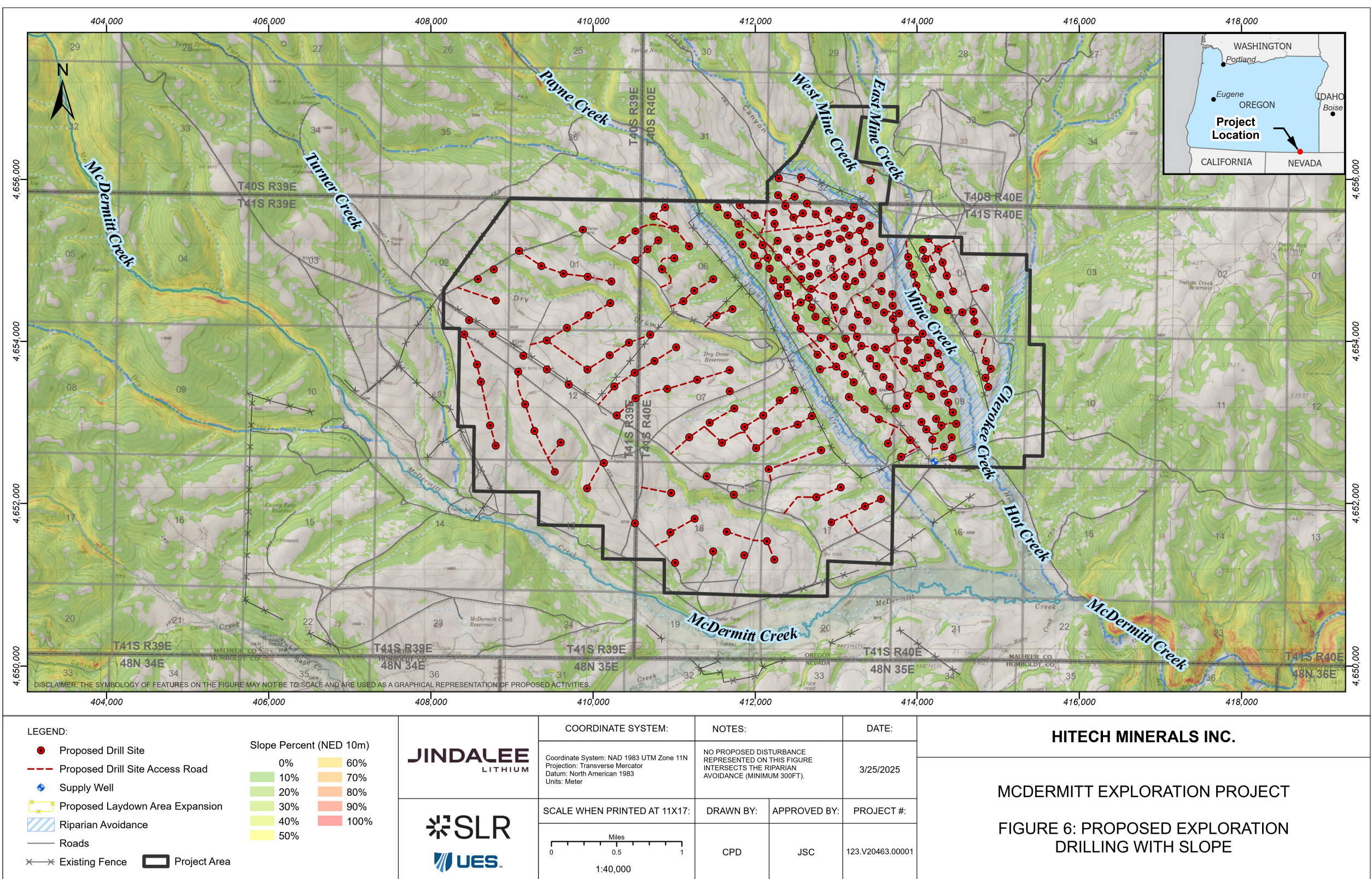
PROJECT #:

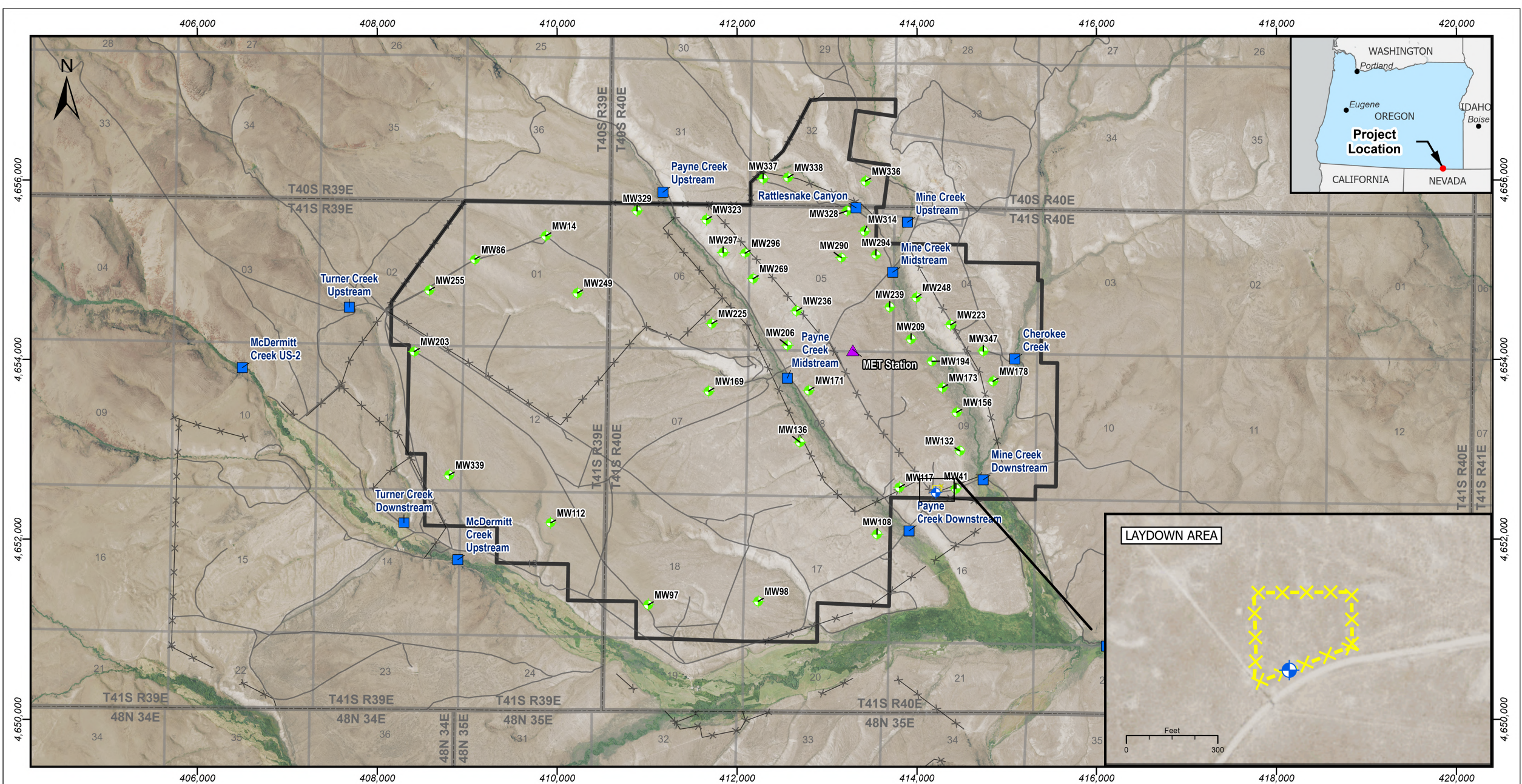
123.V20463.00001

HITECH MINERALS INC.

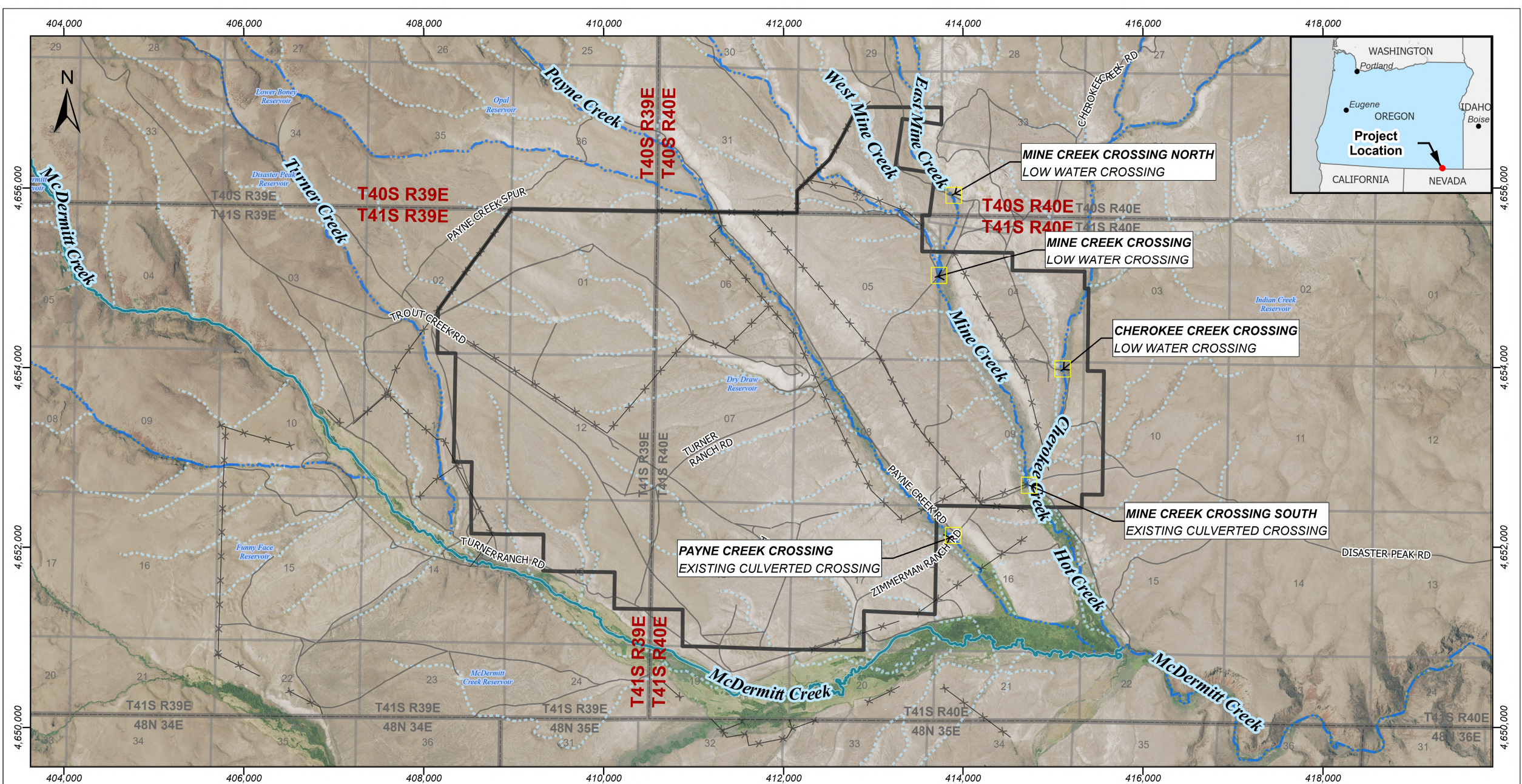
MCDERMITT EXPLORATION PROJECT

**FIGURE 5: PROPOSED EXPLORATION
DRILLING WITH TOPOGRAPHY**

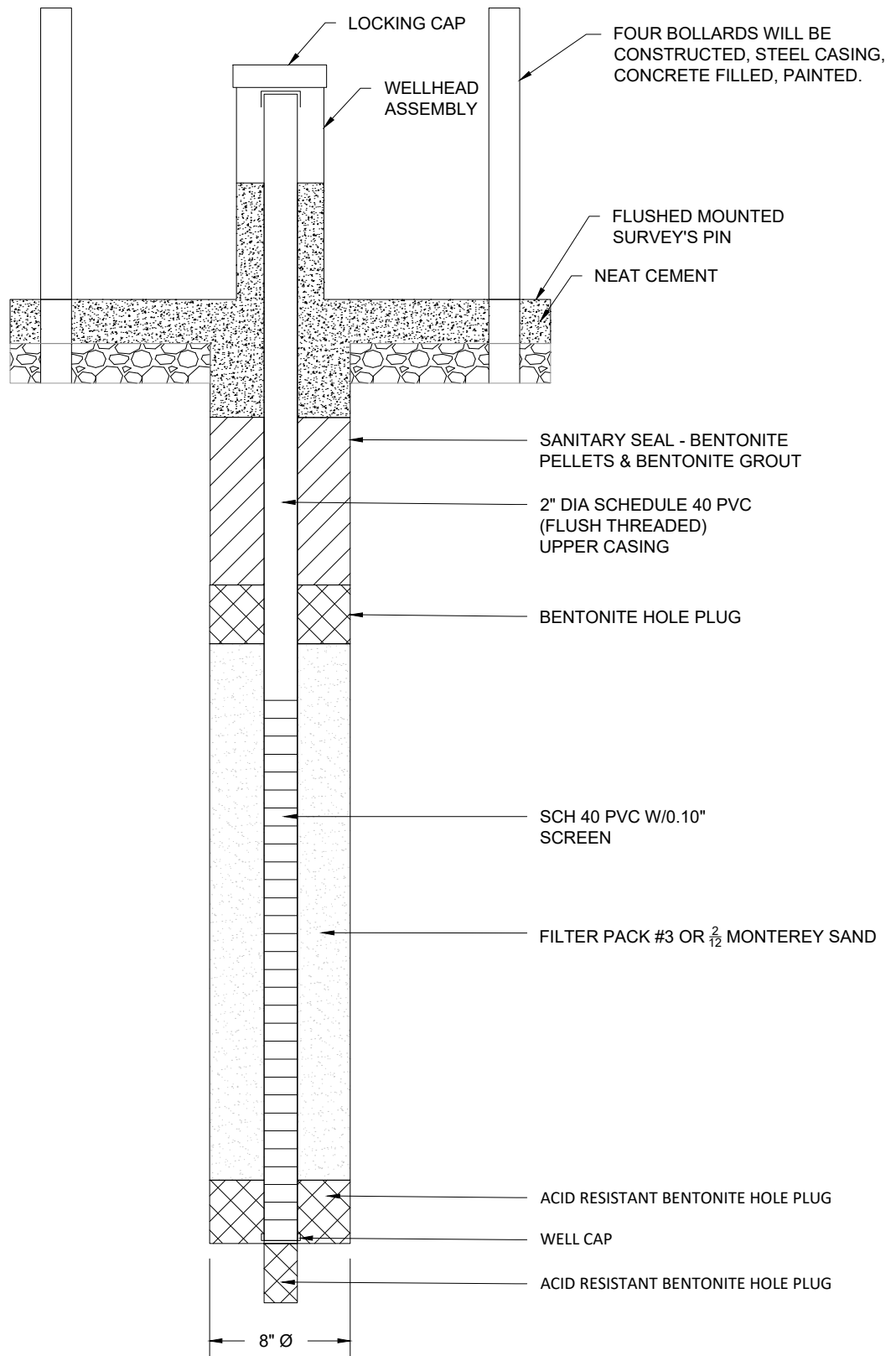




<div>LEGEND:</div> <div><div><div></div><div>Proposed Groundwater Monitoring Wells</div></div><div><div></div><div>Meteorological Station</div></div><div><div></div><div>Surface Water Monitoring Location</div></div><div><div></div><div>Supply Well</div></div><div><div></div><div>Laydown Area Fence</div></div><div><div></div><div>Project Area</div></div><div><div></div><div>Roads</div></div><div><div></div><div>Existing Fence</div></div></div>	<div><div>JINDALEE</div><div>LITHIUM</div></div>	COORDINATE SYSTEM:		NOTES:		DATE:		<div>HITECH MINERALS INC.</div> <div>MCDERMITT EXPLORATION PROJECT</div> <div>FIGURE 7: OCCUPANCY MAP</div>
		Coordinate System: NAD 1983 UTM Zone 11N Projection: Transverse Mercator Datum: North American 1983 Units: Meter		Modification 4 has been approved, regarding the drilling and disturbance of the Supply Well.		3/25/2025		
	<div><div>SLR</div><div>UES</div></div>	SCALE WHEN PRINTED AT 11X17:		DRAWN BY:	APPROVED BY:	PROJECT #:		
		<div><div>Miles</div><div>00.51</div><div>1:40,000</div></div>		CPD	JSC	123.V20463.00001		



<div>LEGEND:</div> <div><div><div><div></div><div>Ephemeral Drainage</div></div><div><div></div><div>Intermittent Drainage</div></div><div><div></div><div>Perennial Drainage</div></div></div><div><div><div></div><div>Project Area</div></div><div><div></div><div>Roads</div></div><div><div></div><div>Existing Fence</div></div></div></div>	<div>JINDALEE</div> <div>LITHIUM</div>	COORDINATE SYSTEM:		NOTES:		DATE:		HITECH MINERALS INC.
		Coordinate System: NAD 1983 UTM Zone 11N Projection: Transverse Mercator Datum: North American 1983 Units: Meter		Mine Creek and Cherokee Creek crossings only to occur during low water conditions.		3/25/2025		
	<div><div>SLR</div><div>UES</div></div>	SCALE WHEN PRINTED AT 11X17:		DRAWN BY:	APPROVED BY:	PROJECT #:		MCDERMITT EXPLORATION PROJECT
		<div><div>Miles</div><div>00.51</div></div> <div>1:40,000</div>		CPD	JSC	123.V20463.00001		



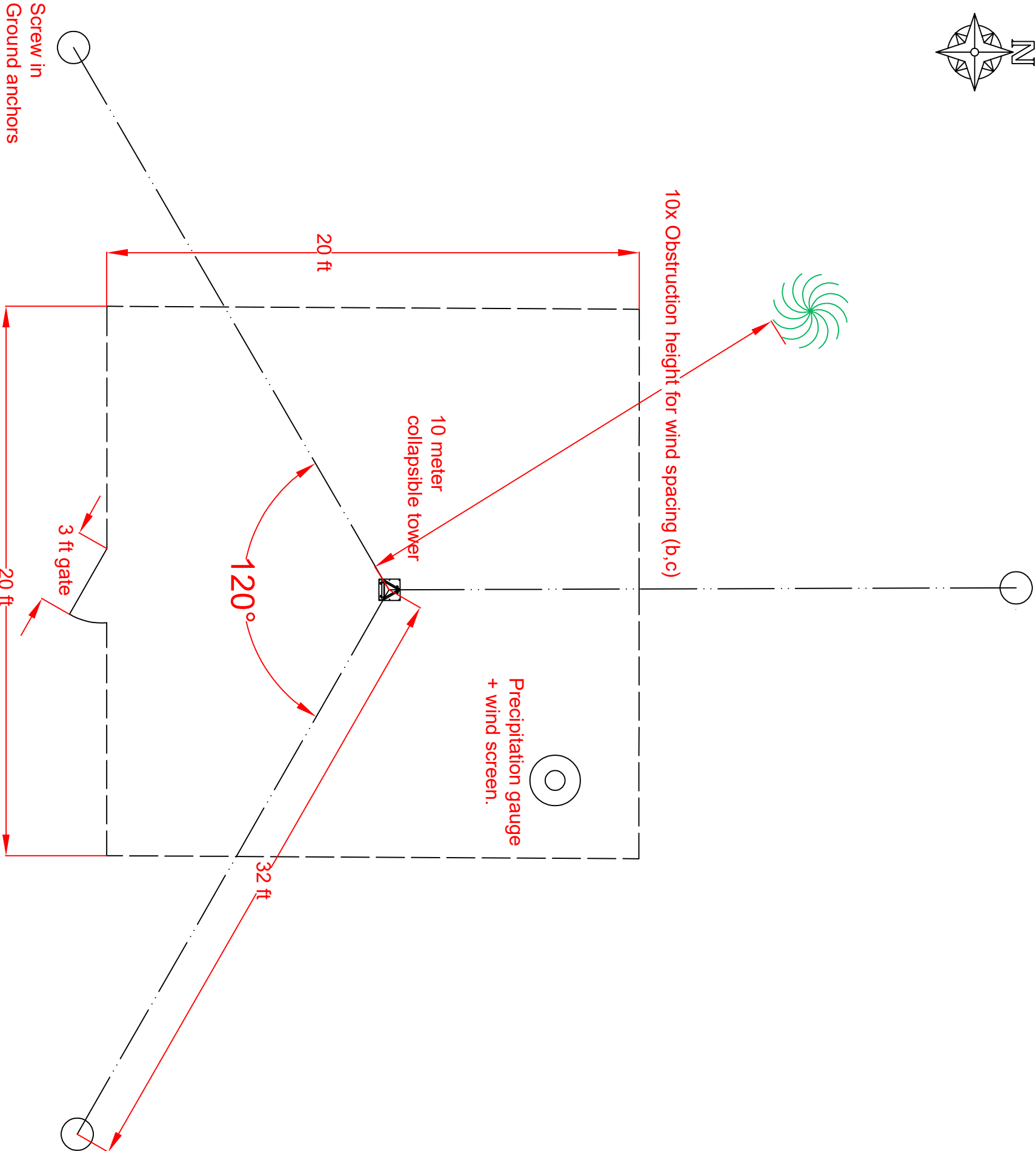
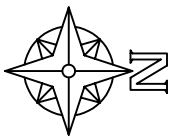
NOT TO SCALE

Typical Well Construction Detail
MCDERMITT EXPLORATION PROJECT

Figure 9

**SEPTEMBER
2024**





REGULATIONS CAPTION:

From Meteorological Monitoring Guidance for Regulatory Modeling Applications, EPA-454/R-99-002, February 2000.

(a) paragraph 3.2.1.1, pp 3-4
(b) paragraph 3.2.1.2, pp 3-4
(c) paragraph 3.2.1.2, pp 3-5
(d) paragraph 3.2.1.2, pp 3-5
(e) paragraph 3.2.2.1, pp 3-5
(f) paragraph 3.2.2.1, pp 3-7
(g) paragraph 3.2.3, pp 5-7

From Quality Assurance Handbook for Air Pollution Measurements Systems, Volume IV: Meteorological Measurements, Version 2.0 (Final), EPA-454/B-08-002, March 2008.

- (f) Section 3, paragraph 3.3, pp 3
(i) Section 0, table 0.12, pp 17
(j) Section 0, table 0.12, pp 17
(k) Section 0, table 0.12, pp 17

GENERAL NOTES:

CONFIDENTIAL AND
PROPRIETARY DESIGN

1. Instrumentation placed according to manufacturer and EPA recommendations.
2. Different or additional instrumentations are susceptible to change this layout.
3. Not all instrumentation displayed for drawing clarity.

FILE NAME: REV: 1.0

Standard West Site Layouting



TITLE:
McDermitt Exploration
Project
Meteorological Station
Layout

DATE: 09/18/2024

SCALE: NOT TO SCALE

CLIENT: Jindalee	
SITE: McDermitt	
JOB #:	
STATION NAME: MCD	
DRAWN BY: VF	
APPROVED BY: CA	

JINDALEE
LITHIUM