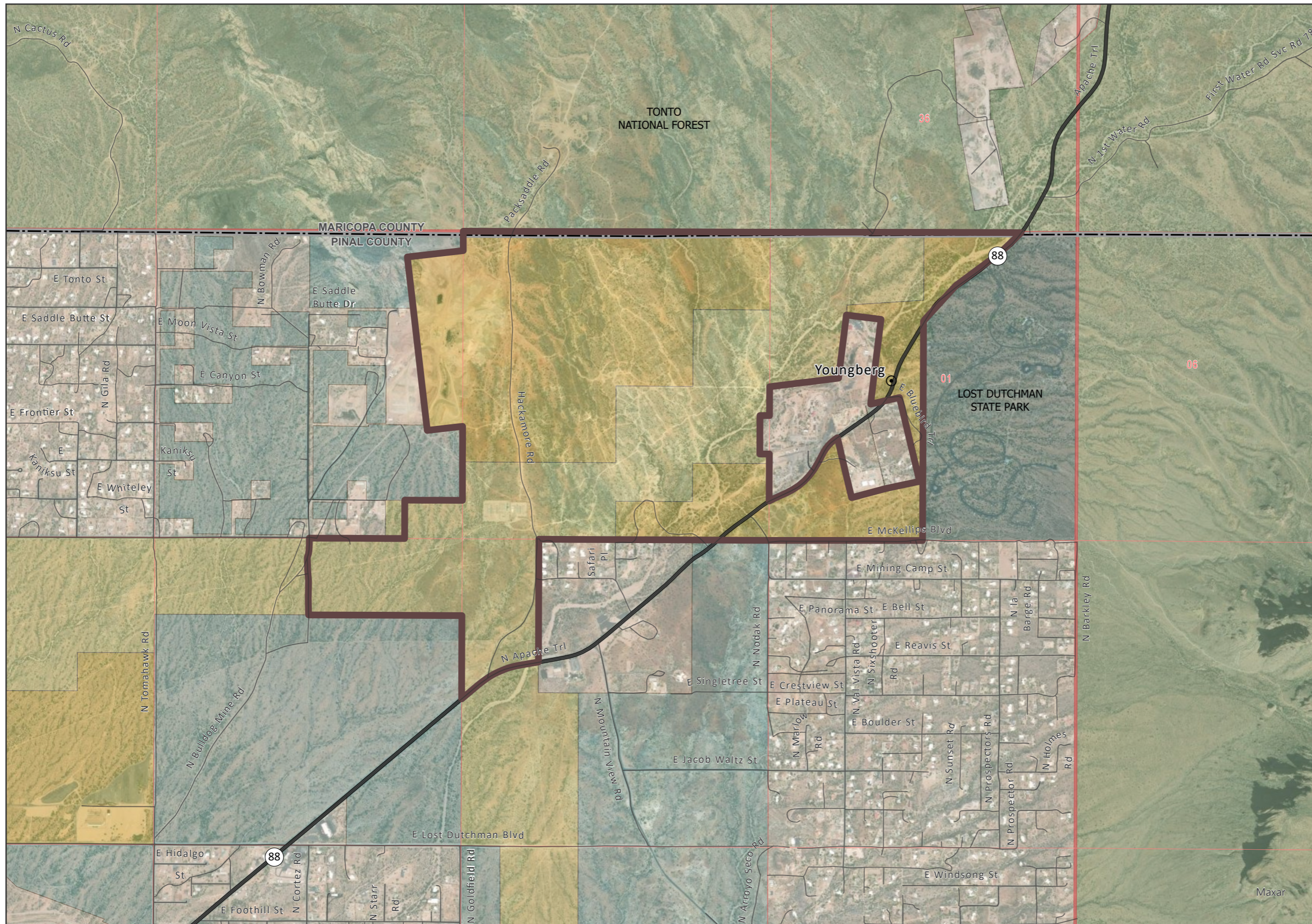




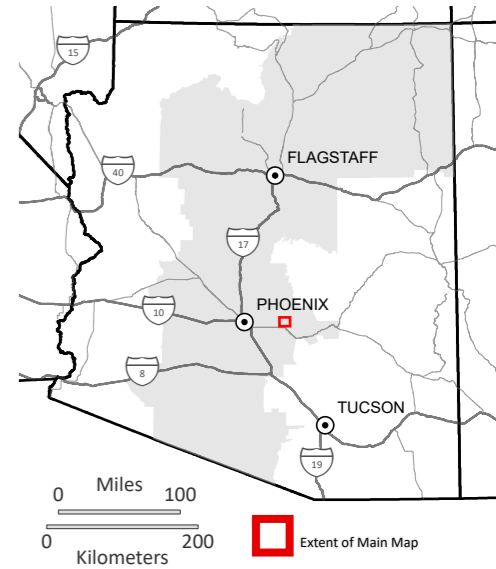
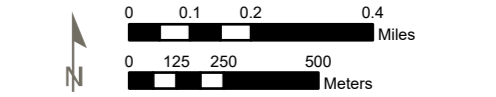
Goldfield (Apache Junction) Recreation Area

Project Overview

NEPA Number DOI-BLM-AZ-P020-2023-0002-EA
Bureau of Land Management - Phoenix District - Lower Sonoran Field Office



- Youngberg
- State Highway
- Road
- Goldfield Recreation Area
- County Boundary
- Bureau of Land Management
- Bureau of Reclamation
- Local or State Parks
- Private
- State
- US Forest Service



Map Produced by BLM Phoenix District Office
Coordinate System: NAD 1983 UTM Zone 12N
Scale: 1:20,000 at 11x17 page output
Date: 8/4/2023

While every effort has been made to ensure the quality of the information presented, the Bureau of Land Management (BLM) makes no warranty regarding the accuracy or completeness of this map. This map and data are representational and are to be used as intended by the BLM. Map data are compiled from various sources. This map and the data from which it was derived are not binding on the BLM and may be revised at any time.