

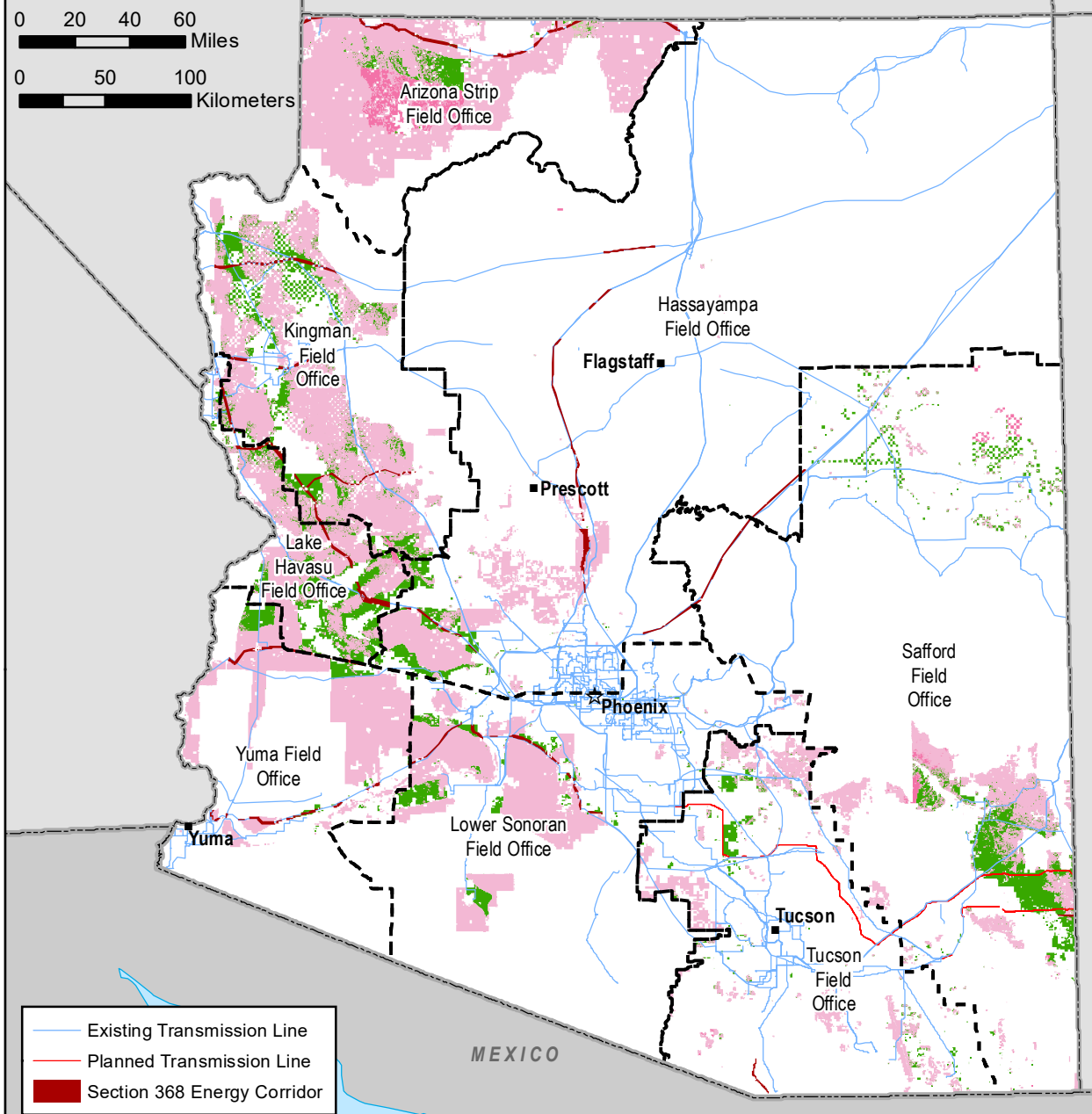
Solar Programmatic EIS Proposed Plan in Arizona

Property of the U.S. Department of the Interior. Prepared in support of the Bureau of Land Management Solar Energy Program, August 2024



0 20 40 60
Miles

0 50 100
Kilometers



- Existing Transmission Line
- Planned Transmission Line
- Section 368 Energy Corridor

- Lands Not Administered by the BLM
- Lands Available for Application (2,813,851 acres)
- Lands Available For Application - Avoidance Designation (11,131 acres)
- Resource-Based Exclusion Areas (8,981,275 acres)
- Areas Excluded Because Not Within 15 Miles of Transmission Lines and Not Previously Disturbed (279,601 acres)
- BLM Administrative Divisions