

# BLM Utah 2023 Competitive Oil and Gas Lease Sale

## Preliminary Parcels - BLM Richfield Field Office

BUREAU OF LAND MANAGEMENT

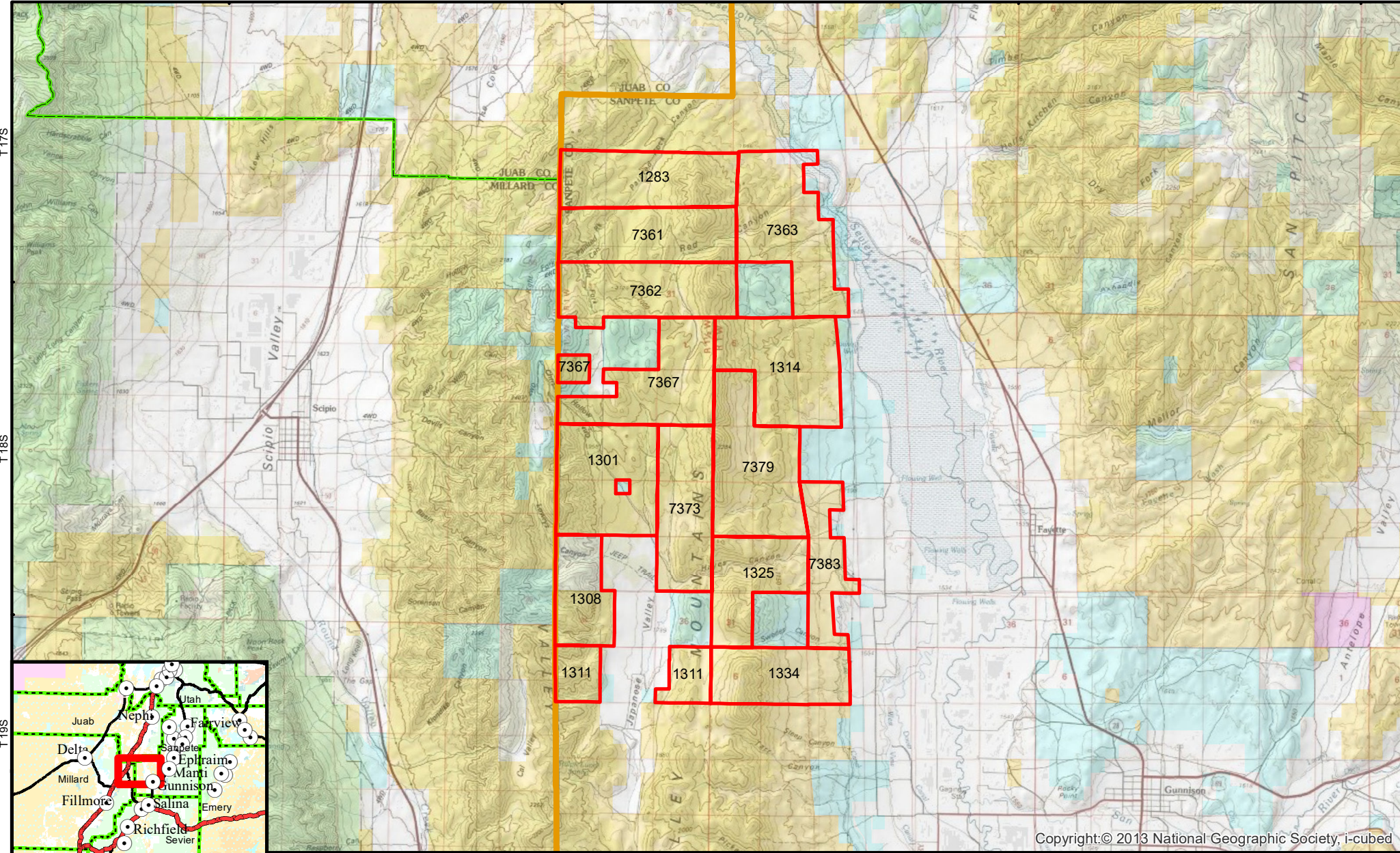
R 3W

R 2W

R 1W

R 1E

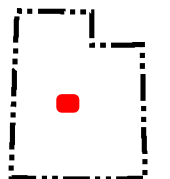
R 2E



Copyright: © 2013 National Geographic Society, i-cubed

- Proposed 2023 Lease Parcel
- Field Office Boundary

- Land Status
- Bureau of Land Management (BLM)
  - US Forest Service (USFS)
  - National Park Service (NPS)
  - State
  - Private



# BLM Utah 2023 Competitive Oil and Gas Lease Sale

## Preliminary Parcels - Fishlake National Forest

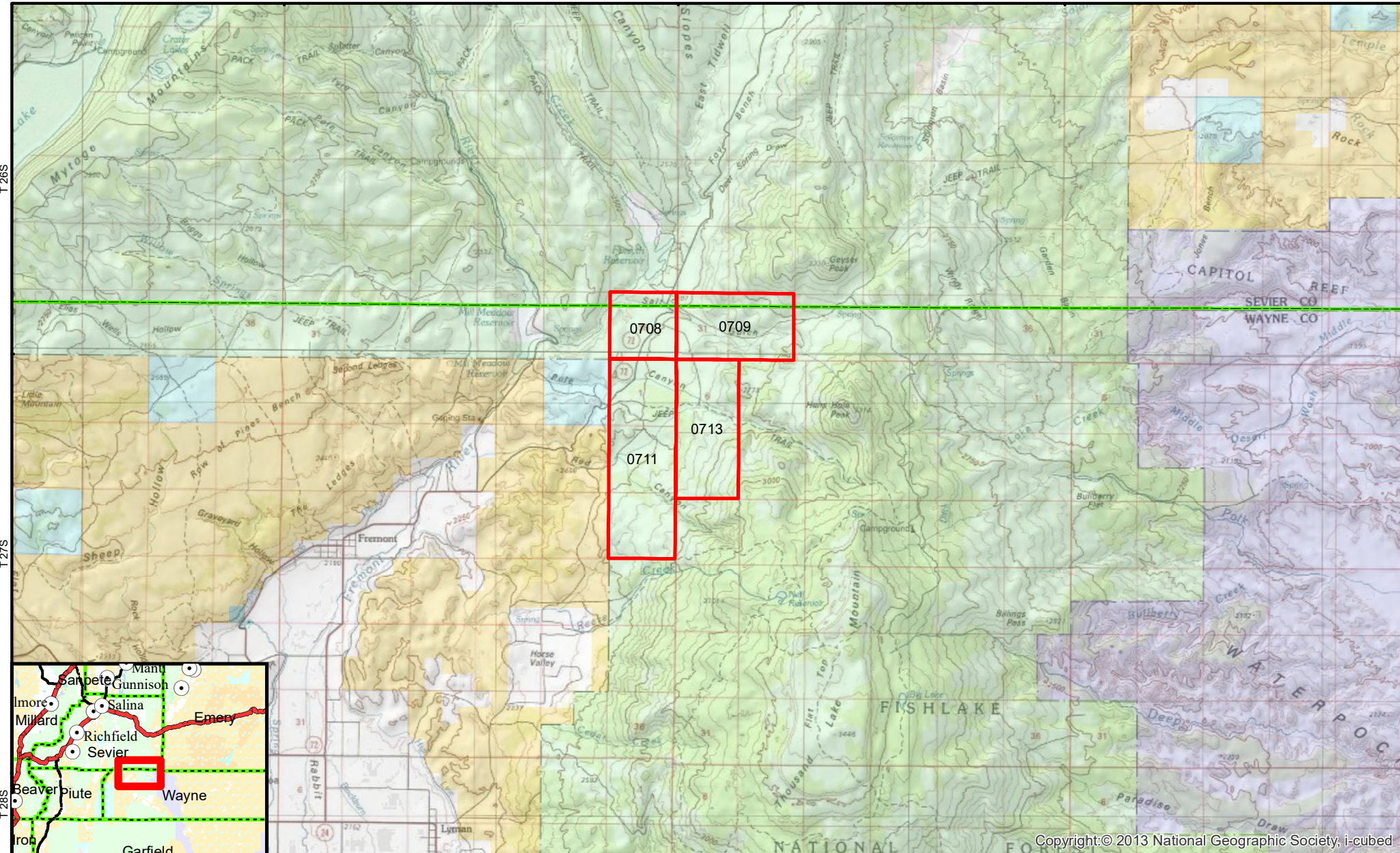
BUREAU OF LAND MANAGEMENT

R 2E


R 3E






R 4E

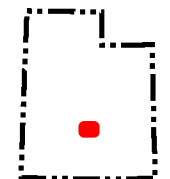
R 5E



Copyright: © 2013 National Geographic Society, i-cubed

 Proposed 2023 Lease Parcel

- Land Status**
-  Bureau of Land Management (BLM)
  -  US Forest Service (USFS)
  -  National Park Service (NPS)
  -  State
  -  Private



November 07, 2022

No warranty is made by the Bureau of Land Management as to the accuracy, reliability, or completeness of these data for individual use or aggregate use with other data.