

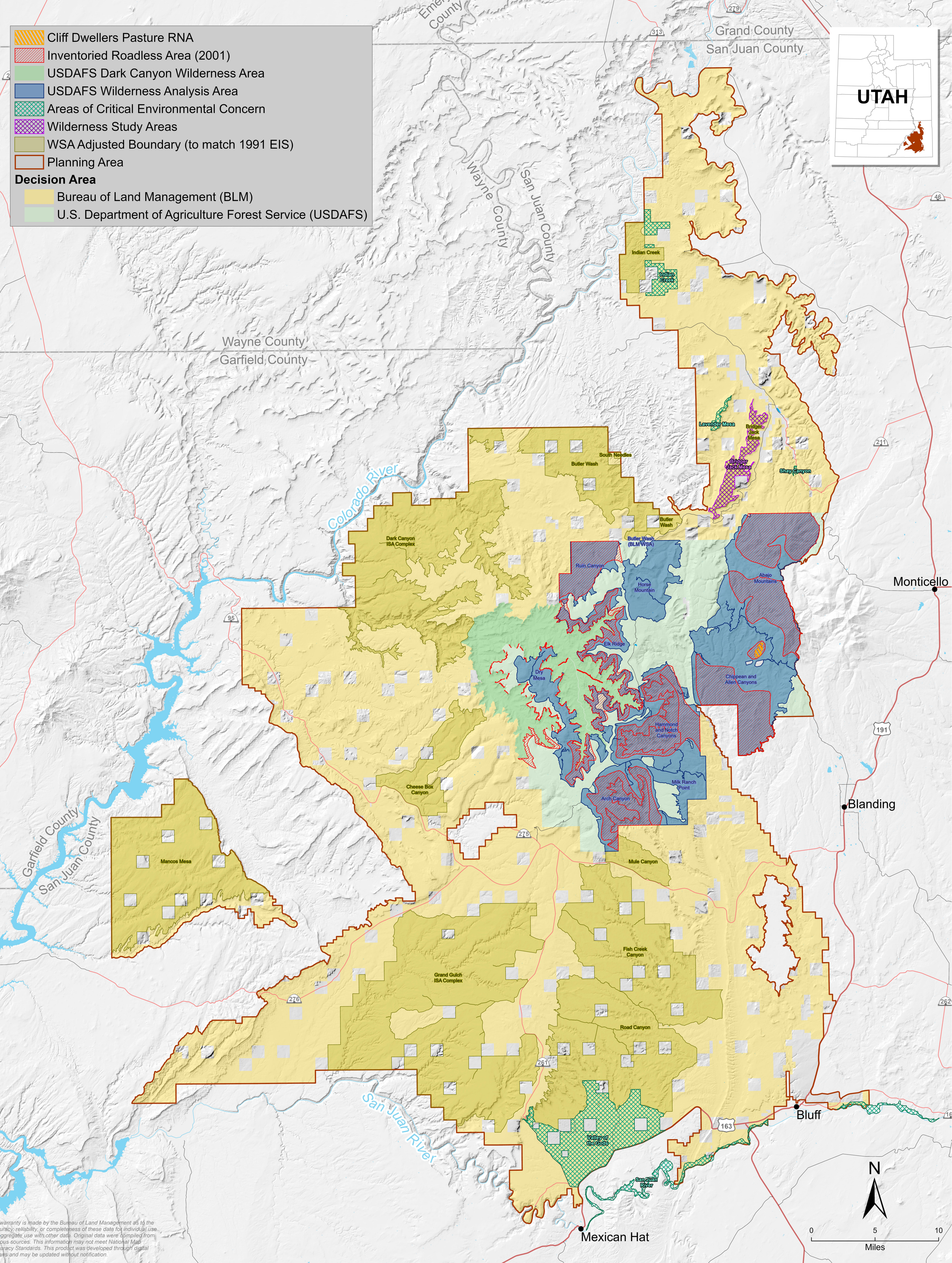


# Bears Ears National Monument

## Resource Management Plan and Environmental Impact Statement



# LANDS WITH SPECIAL DESIGNATIONS



## QUICK FACTS

- There are five suitable Wild and Scenic River segments in the monument; however, there are no eligible river segments in the planning area.
- There are 11 Wilderness Study Areas and Instant Study Areas in the planning area.
- There are eight inventoried roadless areas within the planning area.
- The Dark Canyon Wilderness is located on the Manti-La Sal National Forest.

## WE WANT TO HEAR FROM YOU

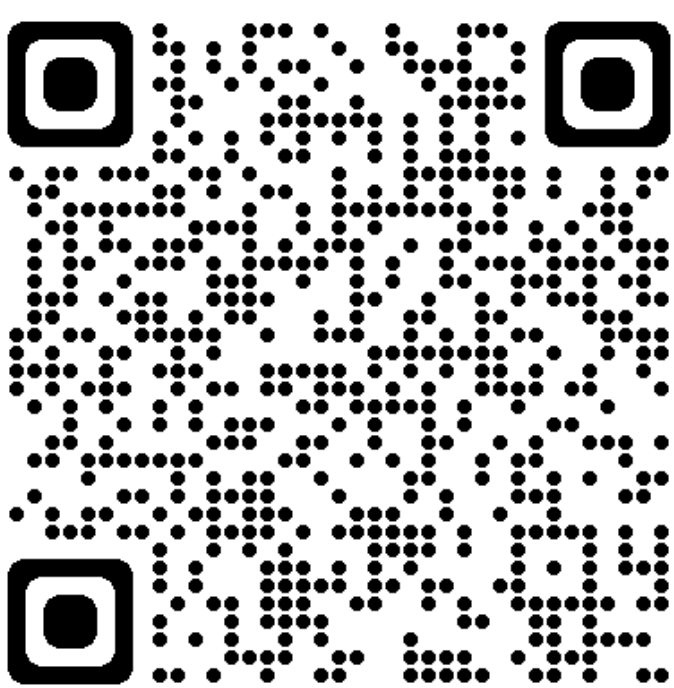
Provided here are prompts you can use when drafting a comment letter for the Bears Ears National Monument Resource Management Plan and Environmental Impact Statement. These prompts are not meant to promote any one stance; we fully encourage everyone to investigate and to describe their own opinions. Please be sure to explain your suggestions when providing input so that it can be most effectively understood and evaluated.

- Is there any scientific information that you think is missing or misrepresented in the analysis of the management situation document for lands with special designations? What needs to be incorporated, and why do you think it should be?
- To adequately direct and align subsequent special designation planning with resource management plan goals and objectives, what level of specificity and sidebars should be provided within the special designations sections of the resource management plan?
- How should the Bureau of Land Management and U.S. Department of Agriculture Forest Service manage lands with special designations, as provided for under Presidential Proclamation 10285?

## HOW TO PROVIDE INPUT

Please submit your comments by October 31, 2022  
You can submit your comments via the ePlanning webpage or by mail.

For more information, please visit the BENM RMP and EIS Webpage:



ePlanning webpage: <https://eplanning.blm.gov/eplanning-ui/projet/2020347/510>  
Mail: Bureau of Land Management, Monticello Field Office, 365 North Main Street, Monticello, UT 84535