



# United States Department of the Interior



BUREAU OF LAND MANAGEMENT  
Paria River District  
Kanab Field Office  
669 S. Highway 89A  
Kanab, UT 84741  
<http://www.blm.gov/utah>

In Reply Refer To:  
1792/1824 (UT-P02)

February 23, 2022

To All Interested Parties:

The Bureau of Land Management (BLM), Paria River District, Kanab Field Office is soliciting public input for the *Paunsaugunt Travel Management Plan* (TMP) Environmental Assessment (EA) # DOI-BLM-UT-P020-2022-0005-EA for existing travel routes and route uses in the Paunsaugunt Travel Management Area (TMA). This TMA covers approximately 185,950 acres of BLM managed land in Kane County, Utah.

The BLM recognizes the importance of public participation and encourages the public to submit scoping input. All documents and information can be accessed online via the ePlanning project page <https://eplanning.blm.gov/eplanning-ui/project/2017395/510> or hard copies are available for pick up at the Paria River District Office during normal business hours (Monday-Friday 8 am to 4:30 pm, excluding Federal holidays).

Resource issues identified through internal and external scoping will assist the BLM in gathering sufficient information to refine and subsequently analyze the proposed action. Input is most useful to the BLM when it provides unbiased information, documented evidence, and any relevant supporting documentation.

You are encouraged to provide us with your comments during the public scoping period that will close on March 25, 2022. This will ensure that your input is considered during the NEPA process of the analyses and that you are on our mailing list to be notified throughout the planning process.

You can submit comment to the BLM via the ePlanning project page, click on the “Documents” tab, go to the column titled “Participate”, click on the “Participate Now” link and follow the instructions or you can use the interactive map feature available through the eplanning project page to submit route specific comments. Comments can also be submitted by email to: [blm ut kn mail@blm.gov](mailto:blm_ut_kn_mail@blm.gov), or by U.S. mail to BLM Paria River District, KFO, Paunsaugunt TMP, Attn: Ade’ Nelson, 669 South HWY 89A, Kanab, UT 84741.

Comments and related personal-identifying information will be subject to disclosure under the Freedom of Information Act (FOIA) and comments may be published as part of the Environmental Assessment (EA) and other related documents. Individual respondents may request confidentiality. If you wish to withhold your name, street address, or email address from public review and disclosure under the FOIA, you must state this prominently at the beginning of your written comment. Such requests will be honored to the extent allowed by law. All submissions from organizations or businesses will be made available for public inspection in their entirety. The BLM will not accept anonymous comments.

Based upon issues identified, the BLM will assess the appropriate level of environmental analysis and documentation. Thank you in advance for your participation.

Sincerely,

Whit Bunting  
Kanab Field Office Manager

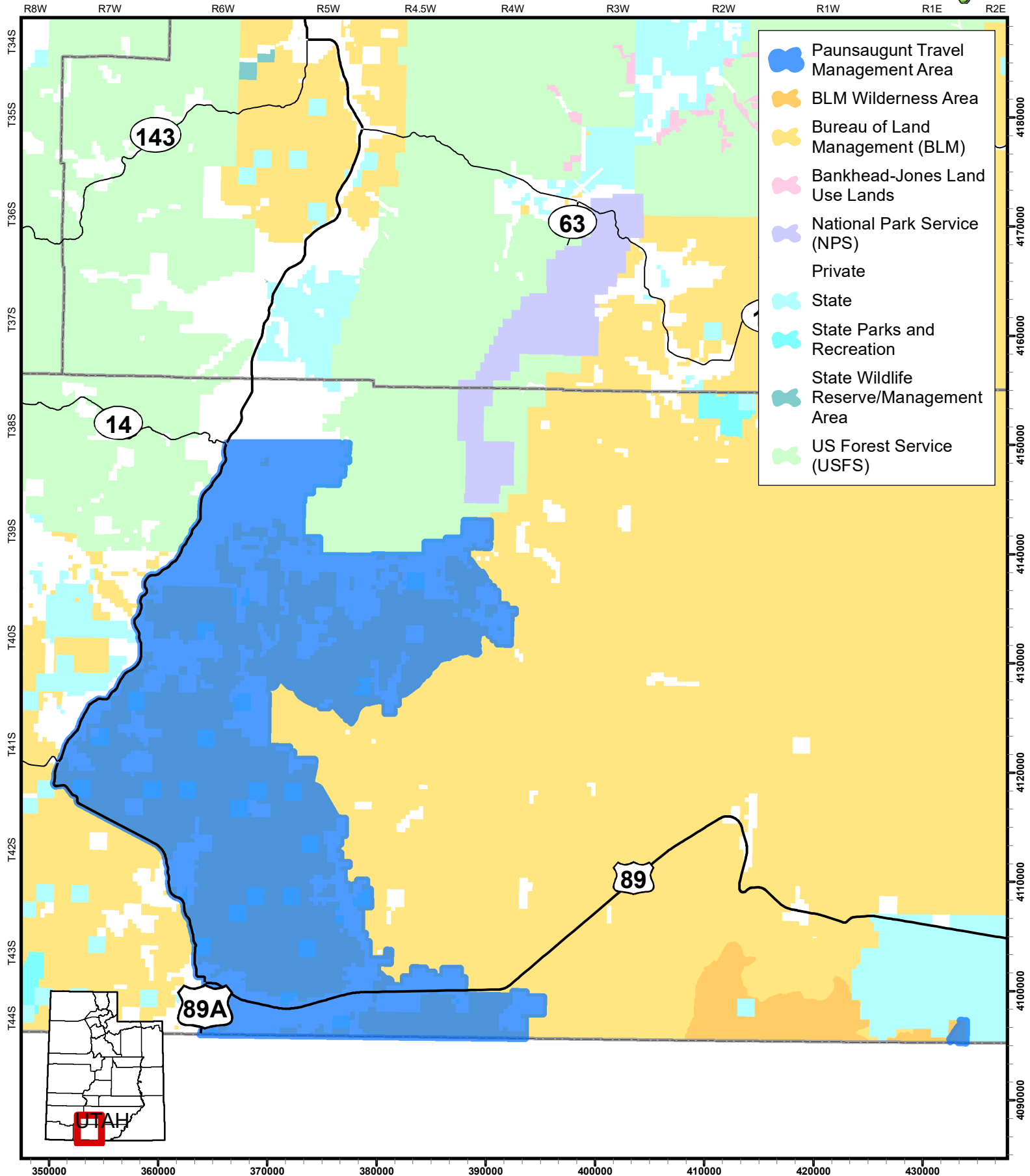
Enclosures

- 1- Map of Paunsaugunt Travel Management Area (TMA)
- 2- Paunsaugunt Travel Management Plan Environmental Assessment Public Scoping & Route Inventory Verification Period Information

# Paunsaugunt Travel Management Area

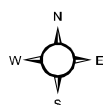
Map Created Feb 18, 2022

Kanab Field Office  
Paria River BLM



U.S. DEPARTMENT OF THE INTERIOR  
BUREAU OF LAND MANAGEMENT  
KANAB FIELD OFFICE

No warranty is made by the Bureau of Land Management as to the accuracy, reliability, or completeness of these data for individual use or aggregate use with other data.



0 10 20 Miles

1:450,000



U.S. Department of the Interior  
Bureau of Land Management

## Paunsaugunt Travel Management Plan Environmental Assessment Public Scoping & Route Inventory Verification Period Information

### Project Introduction:

The Bureau of Land Management (BLM) Kanab Field Office (KFO) is soliciting public scoping input on a proposed Travel Management Plan (TMP) Environmental Assessment (EA). The EA will analyze and consider modifying designations for inventoried routes located within the Paunsaugunt Travel Management Area (TMA). The TMA includes approximately 185,950 acres of BLM lands managed by the KFO in Kane County, Utah.

The proposed TMP will designate off-highway vehicle (OHV) motorized routes only. The TMP will not consider or authorize the construction of new routes or designate any non-motorized routes, such as equestrian, hiking, or mountain biking trails.

### Background Information:

In 2008, the KFO released a record of decision and an approved Resource Management Plan (2008 RMP) that included a TMP that established the final travel and transportation network for all lands within the KFO planning area. Of the 1,402 miles designated for OHV use in 2008, approximately 418 of those miles are within the Paunsaugunt TMA.

In 2017, BLM entered into a settlement agreement wherein it committed to creating new TMPs for 13 TMAs across the State of Utah. The Paunsaugunt TMA is one of the TMAs listed in the settlement agreement.

### Inventory Verification:

Prior to public scoping, BLM staff conducted internal scoping that included cooperating agencies. Through this process, BLM staff and cooperating agencies identified approximately 33 miles of routes that were overlooked in the 2008 inventories and therefore did not receive an OHV designation at that time. Of these missed routes, approximately 13 miles are Kane County Class B roads (approximately 10 miles of the Skutumpah/Glendale Bench Rd (PA 1002)., approximately 1 mile of the Johnson Canyon Rd (PA 1035)., and approximately 2 miles of the Old Paria Rd. (PA 1009)). The remaining 20 miles of routes have not been designated by BLM and are not available for public OHV use at this time.

All undesignated routes being considered for designation have been verified using historical aerial imagery, confirmed on the ground by the BLM, and assigned a temporary identifier. This identifier begins with "PA" and is followed by a four-digit number (ex. PA 1001). Each "PA" route has a documented purpose and need and existed prior to the adoption of the 2008 TMP. These existing inventoried undesignated routes will be considered for designation in addition to the routes that were designated OHV-open or OHV-limited in the 2008 RMP.

A total of approximately 451 miles of routes will be considered for OHV designation. Maps provided for scoping will show all 451 miles of routes being considered for designation. The 33 miles of undesignated routes being considered for designation are highlighted in blue on the scoping maps.

### Project Scoping:

The BLM recognizes the importance of public participation and encourages the public to submit scoping input. To assist the public in providing meaningful input, the BLM has made available to the public and stakeholders, maps of all routes being considered for designation within the TMA. The maps show individual routes and include the BLM route number/identifier, the Kane County Road number (if applicable), and any common route name known to BLM.

Resource issues identified through internal and external scoping will assist the BLM in gathering sufficient information to refine and subsequently analyze the proposed action. Input is most useful to BLM when it provides unbiased information, documented evidence, and any relevant supporting documentation.

**For more information on travel management planning, please visit BLM Utah's Travel Management website at [www.blm.gov/travel-and-transportation/utah](http://www.blm.gov/travel-and-transportation/utah).**