



Bureau of Land Management  
Battle Mountain District Office  
Tonopah Field Office

# Welcome to the Rhyolite Ridge Lithium-Boron Project Public Scoping Meeting

---

The Public Scoping Meeting Will Start Soon....



Bureau of Land Management  
Battle Mountain District Office  
Tonopah Field Office

# Rhyolite Ridge

# Lithium-Boron Project

# Environmental Impact Statement Scoping Meeting

---

## Public Meetings

January 4, 2023 – 2:00 to 3:00 pm

January 5, 2023 – 5:00 to 6:00 pm





U.S. Department of the Interior  
Bureau of Land Management

# Zoom Basics

- All participants will be muted during the presentation.
- After the presentation there will be a question and answer period. You will be able to verbally ask questions or use the question and answer box.
- Information on how to ask questions will be provided at the start of the question and answer session.
- We will not be accepting official scoping comments through this platform. The ways to provide scoping comments will be provided throughout the meeting.



U.S. Department of the Interior  
Bureau of Land Management

# Meeting Ground Rules

- 1 Focus questions on the project to further your understanding of the proposed action.
- 2 Be respectful of panelist and other attendees; let others ask their questions.
- 3 Do not use inappropriate language.
- 4 Create a safe environment for all attending; breaking any rules will result in removal from the virtual meeting.





U.S. Department of the Interior  
Bureau of Land Management

# Meeting Agenda

- I. Welcome and Logistics
- II. BLM Presentation
  - I. Meeting Purpose and Goals
  - II. NEPA/EIS Process Overview
  - III. EIS Team Introductions
- III. Proponent Presentation of Proposed Rhyolite Ridge Lithium-Boron Project
- IV. Baseline Studies
- V. Review How to submit Scoping Comments
- VI. Question and Answer Session



U.S. Department of the Interior  
Bureau of Land Management

# EIS and Project Team

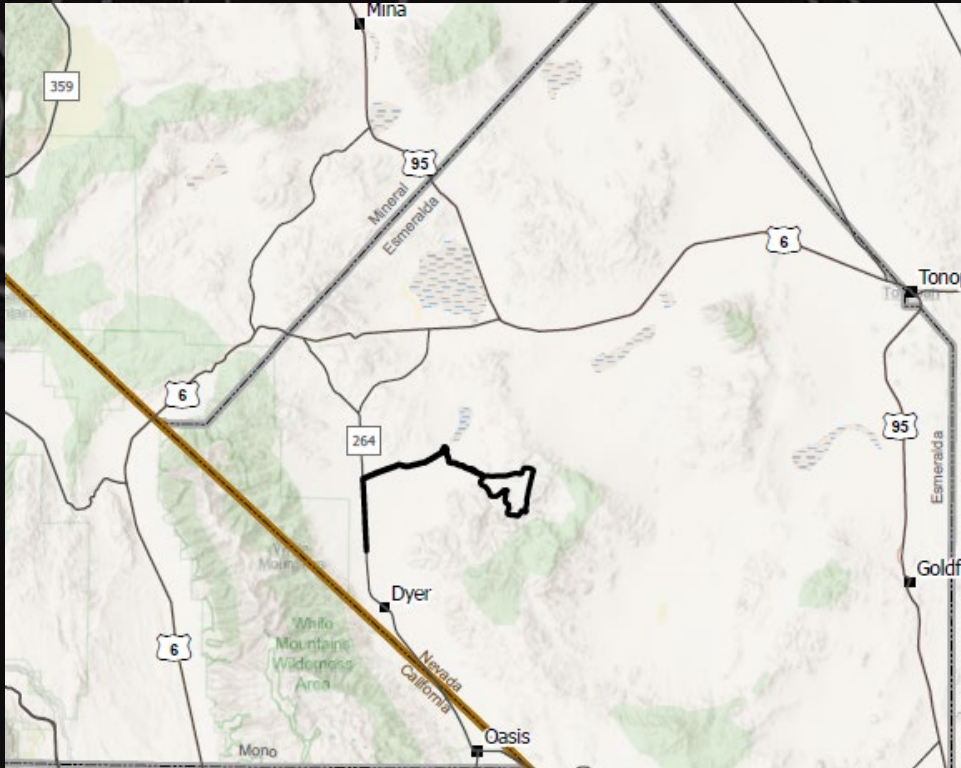
Name	Role
<b>Bureau of Land Management</b>	
Scott Distel	Project Lead
Perry Wickham	Tonopah Field Manager
<b>Third Party Consultant</b>	
Diana Eck	Project Manager
Charli Sperry	Assistant Project Manager
<b>loneer</b>	
Bernard Rowe	loneer
Matt Weaver	loneer
Rebecca Sawyer	loneer
Richard Delong	WestLand
David Cerasale	WestLand





U.S. Department of the Interior  
Bureau of Land Management

# Project Location and Background



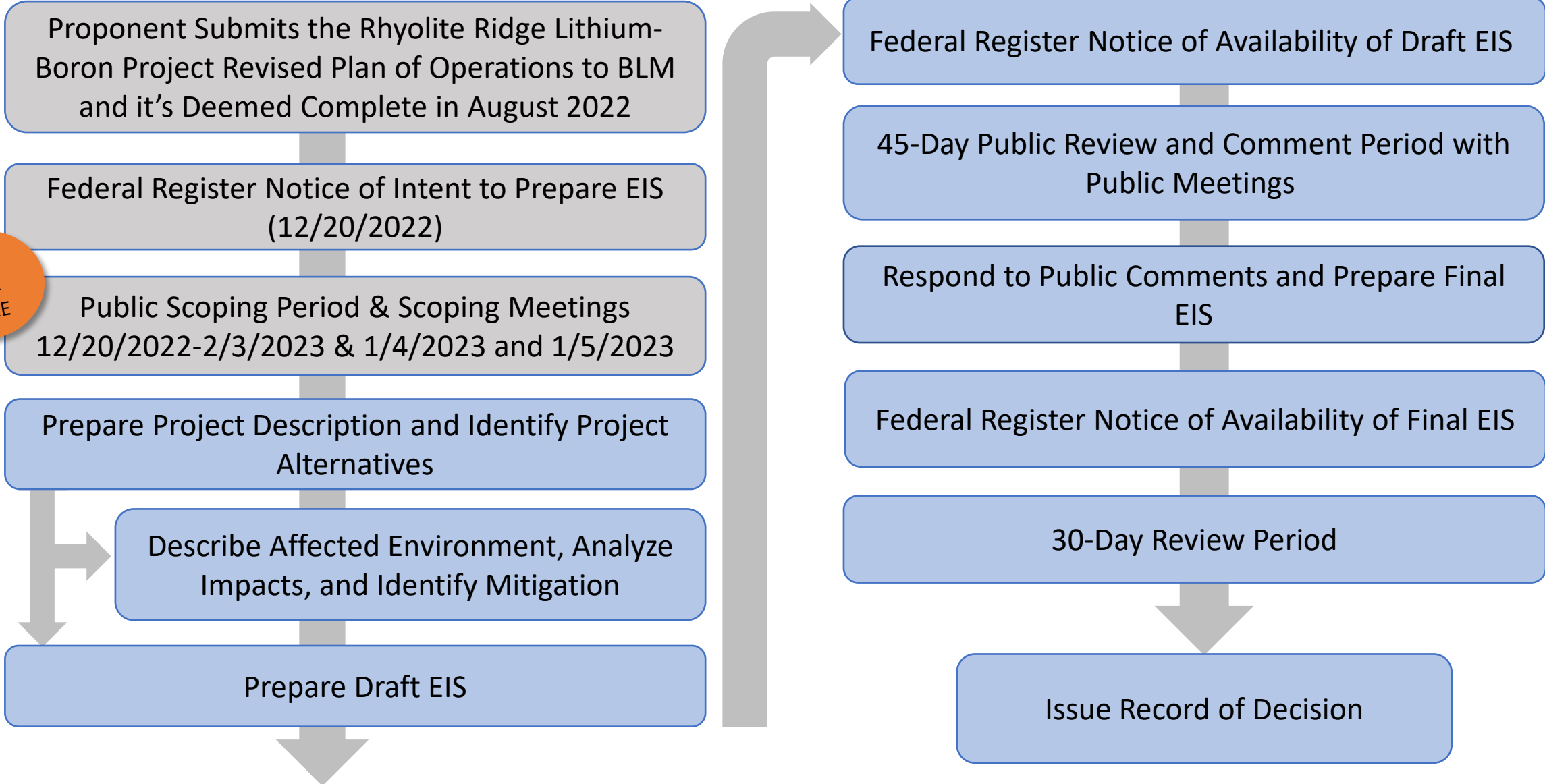
- Proposed project located in southwestern Nevada in Esmeralda County, Nevada approximately 13 air miles northeast of Dyer, NV
- Revised Plan of Operations Deemed Complete in August 2022 Triggering NEPA Analysis
- Level of NEPA Analysis Determined by BLM to be EIS



U.S. Department of the Interior  
Bureau of Land Management

# NEPA Process

WE  
ARE  
HERE







U.S. Department of the Interior  
Bureau of Land Management

# Participating Agencies

## Lead Agency

- Bureau of Land Management
- Battle Mountain District Office, Tonopah Field Office

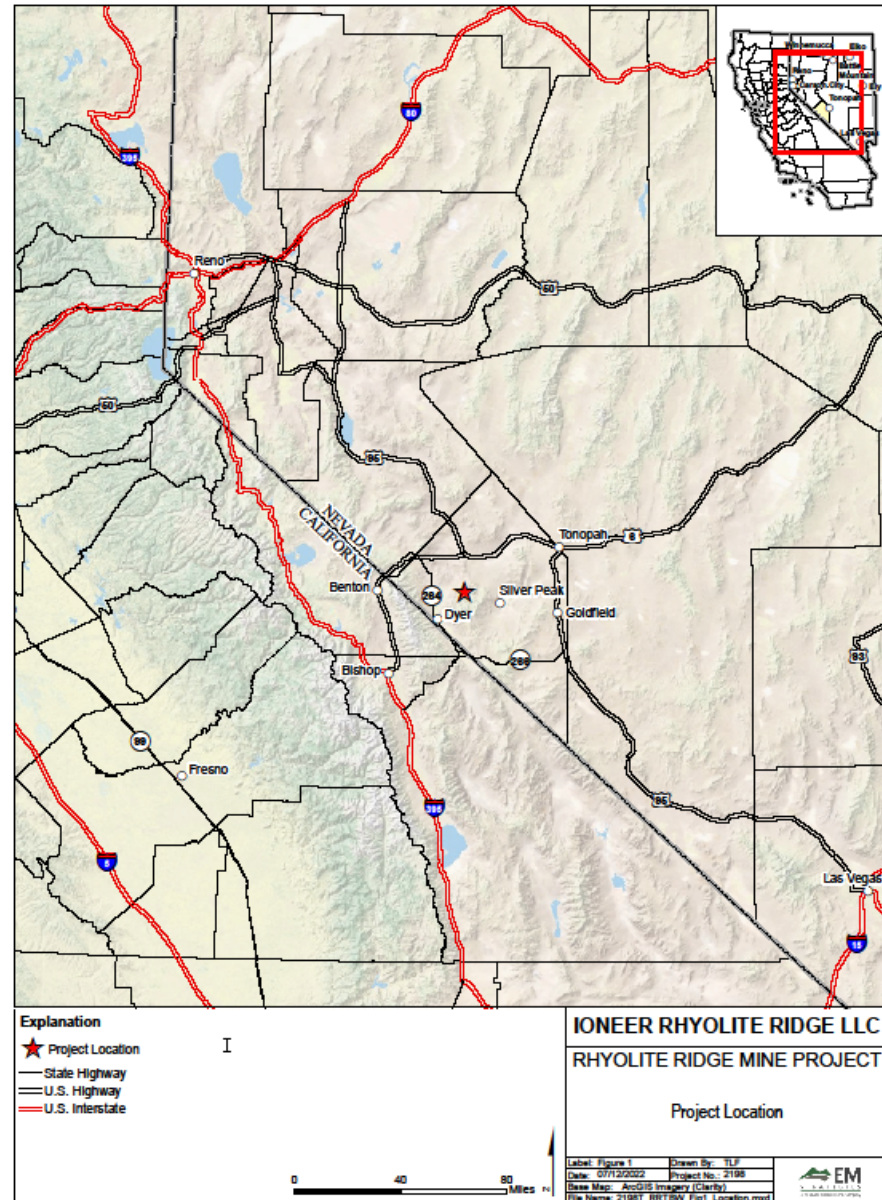
## Agencies Invited to Cooperate:

- United States Department of Energy
- United States Environmental Protection Agency
- United States Fish and Wildlife Service Ecological Branch
- United States Fish and Wildlife Service Migratory Bird Program
- Nevada Department of Wildlife
- Nevada Division of Forestry
- Esmeralda County
- Nye County

# RHYOLITE RIDGE LITHIUM-BORON MINE

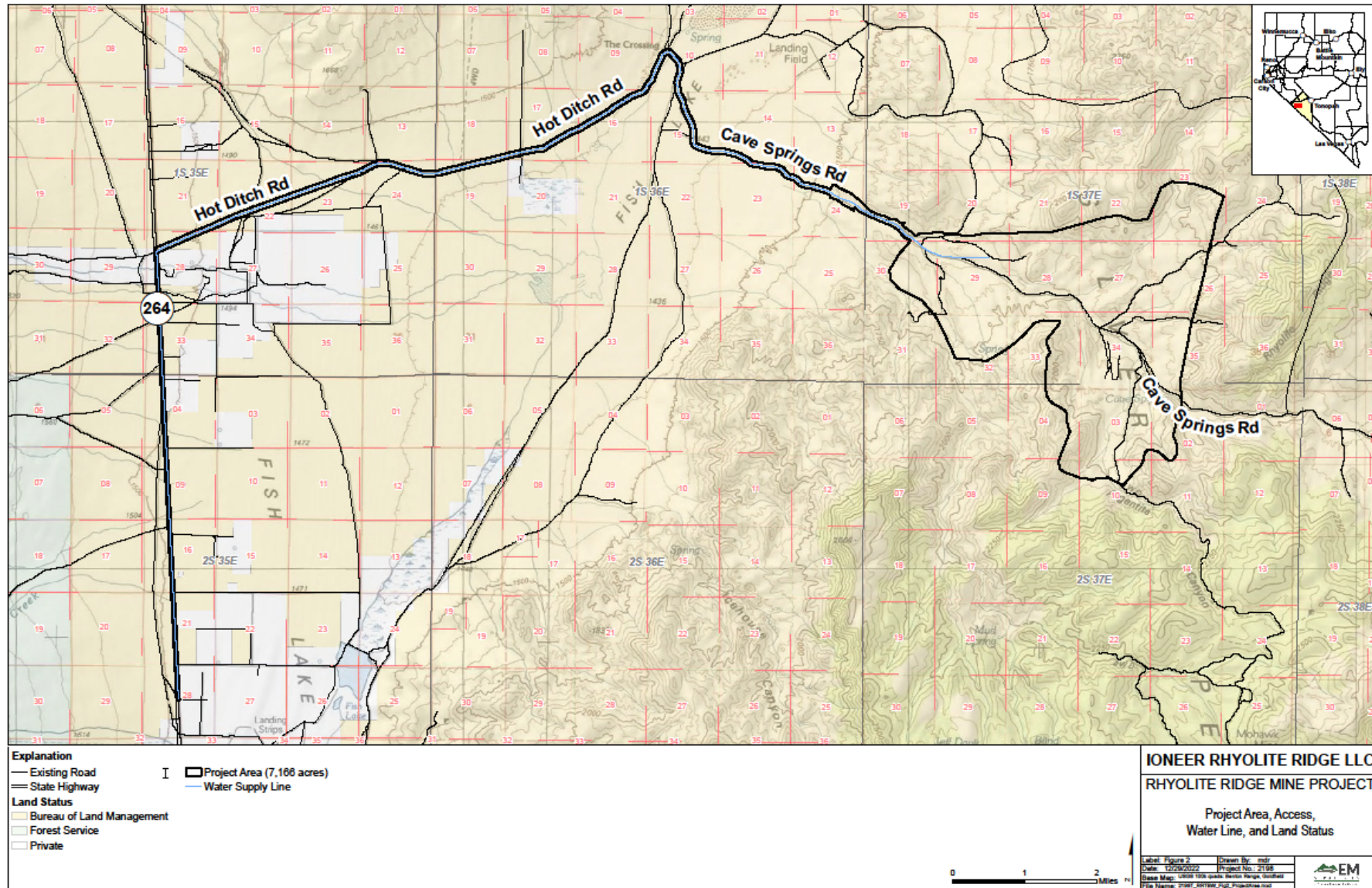
Esmeralda County, Nevada

Fish Lake Valley



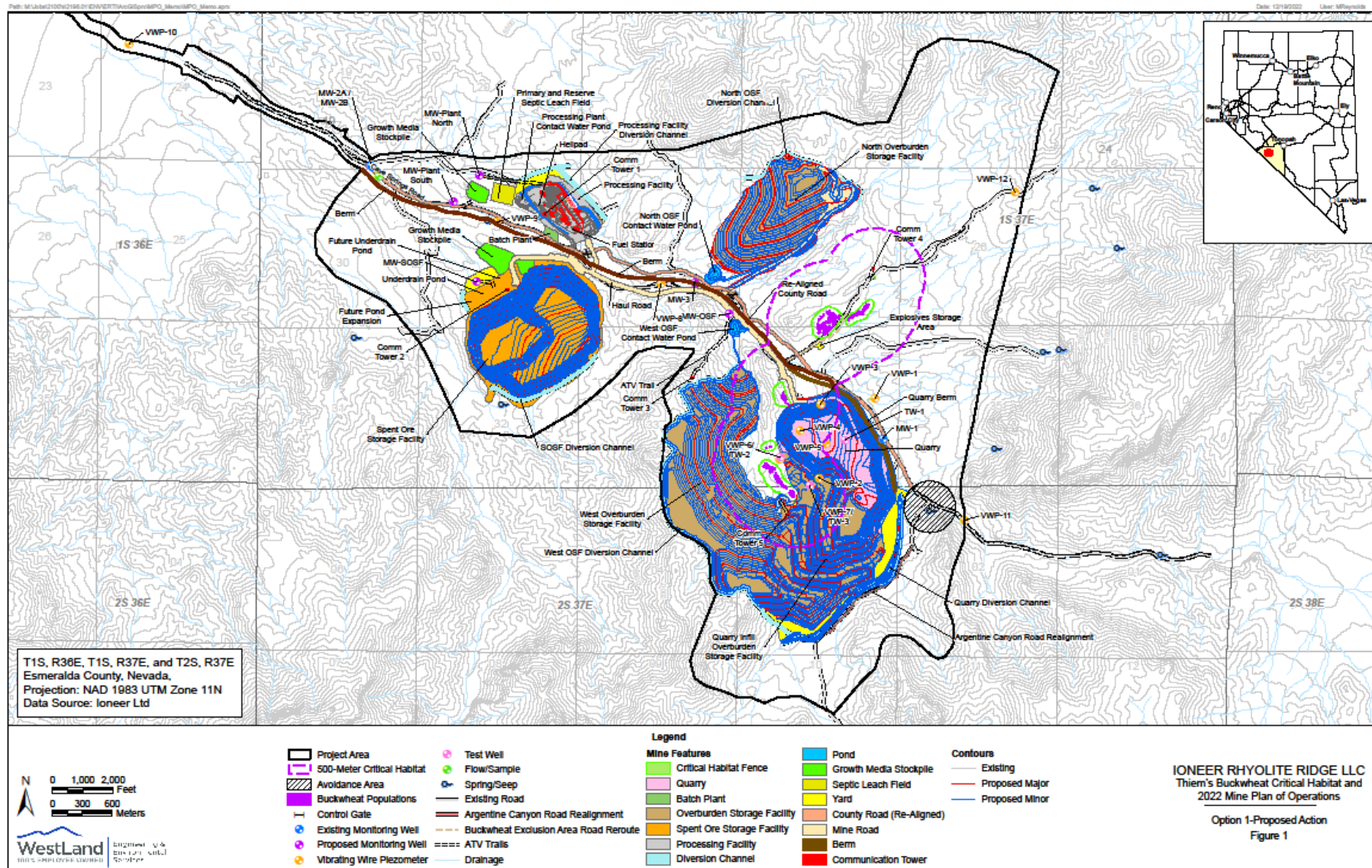


# Project Area



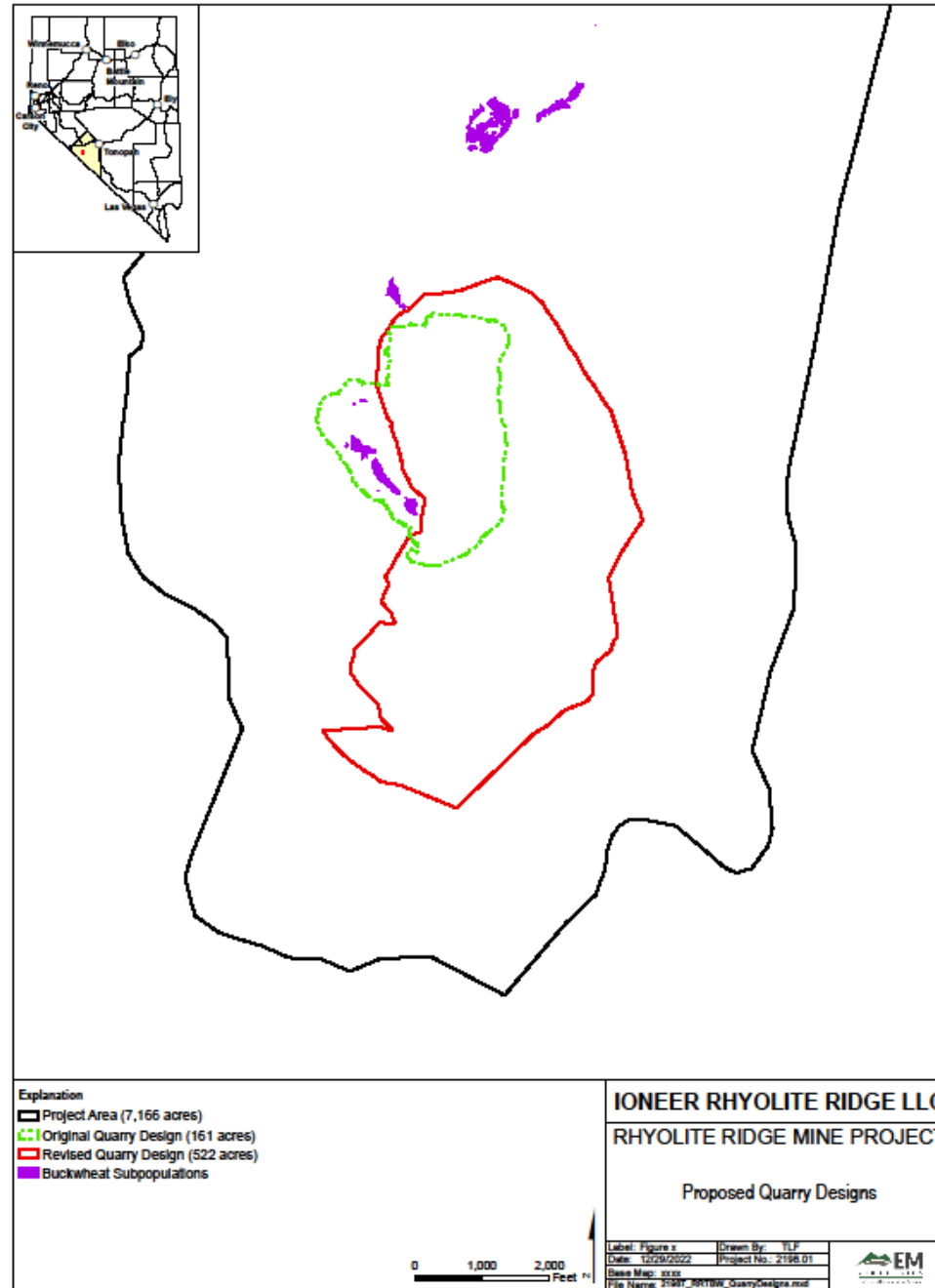


# Operational Area

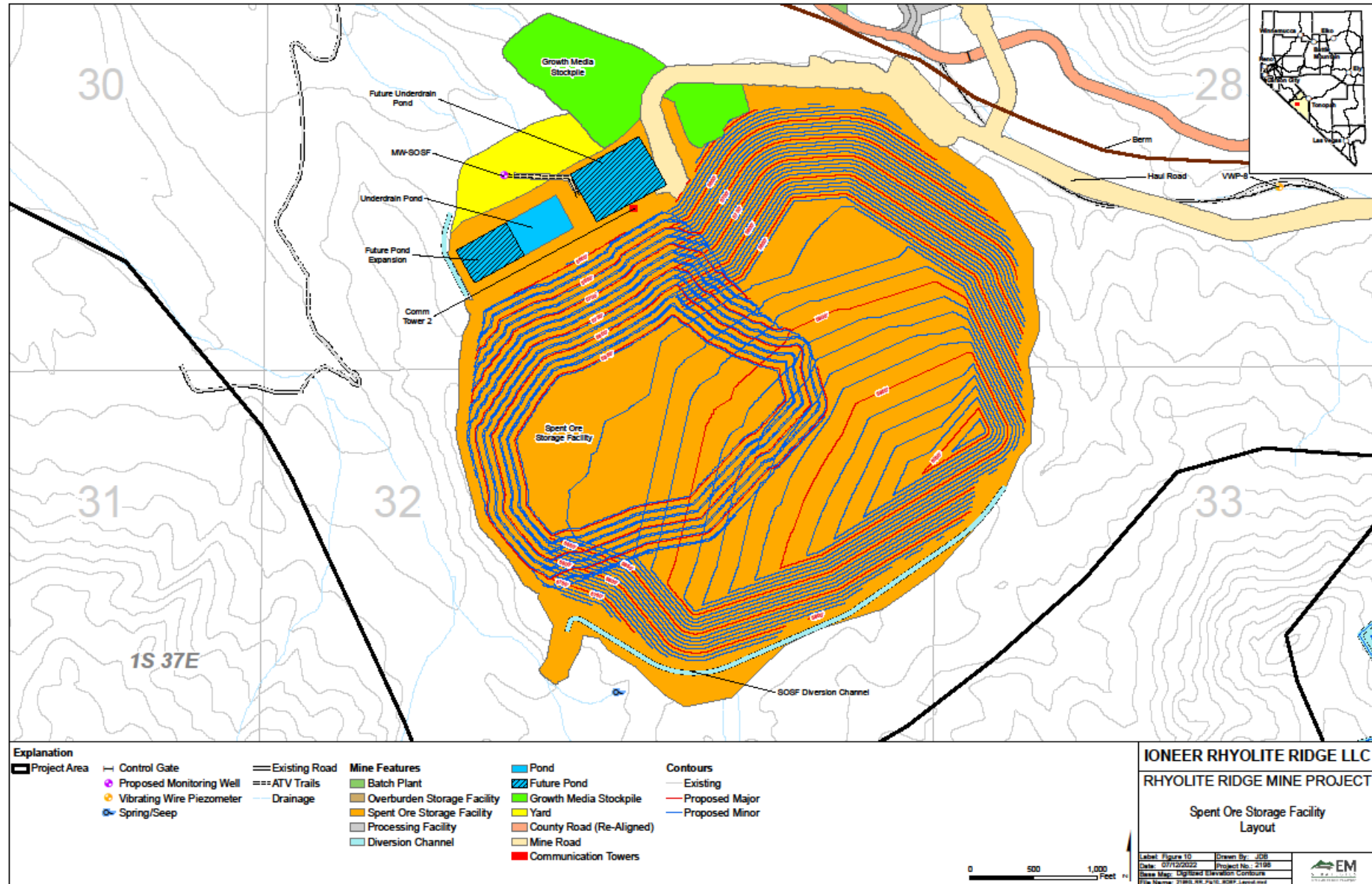




# Original Quarry Outline Versus Current Quarry Outline, with buckwheat populations in purple

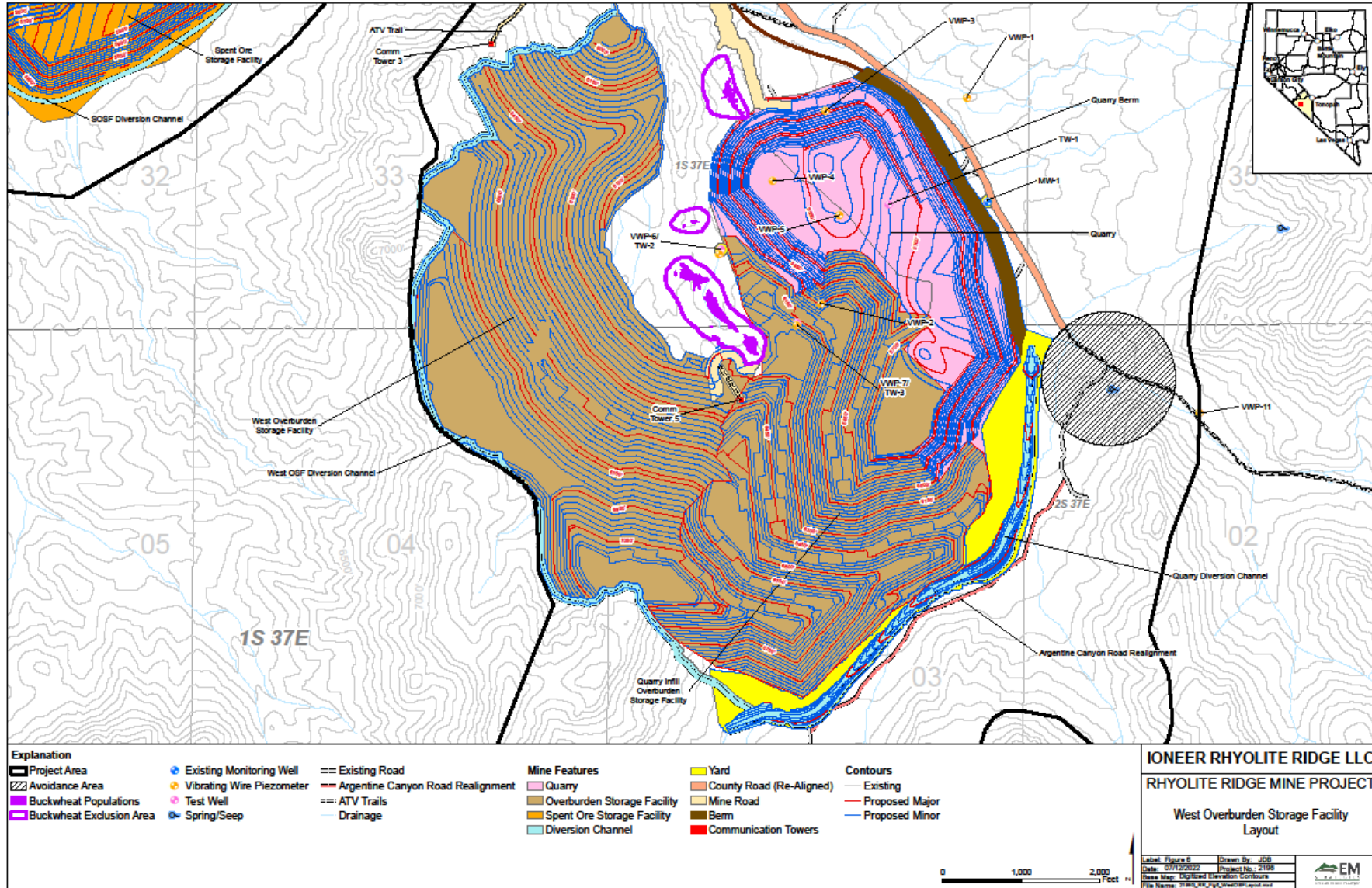


# SOSF at full build out

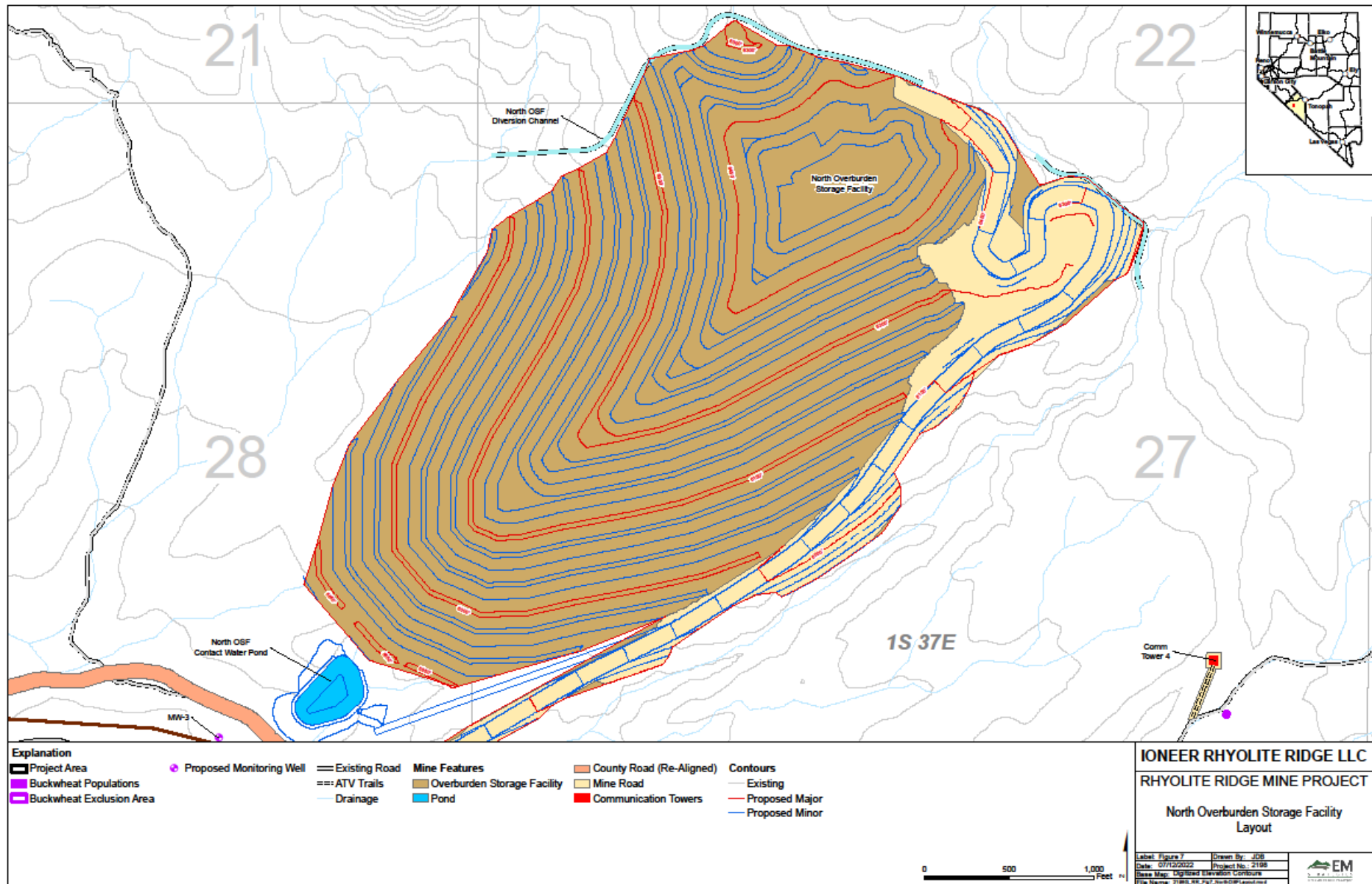




# Quarry and West OSF at the end of mining

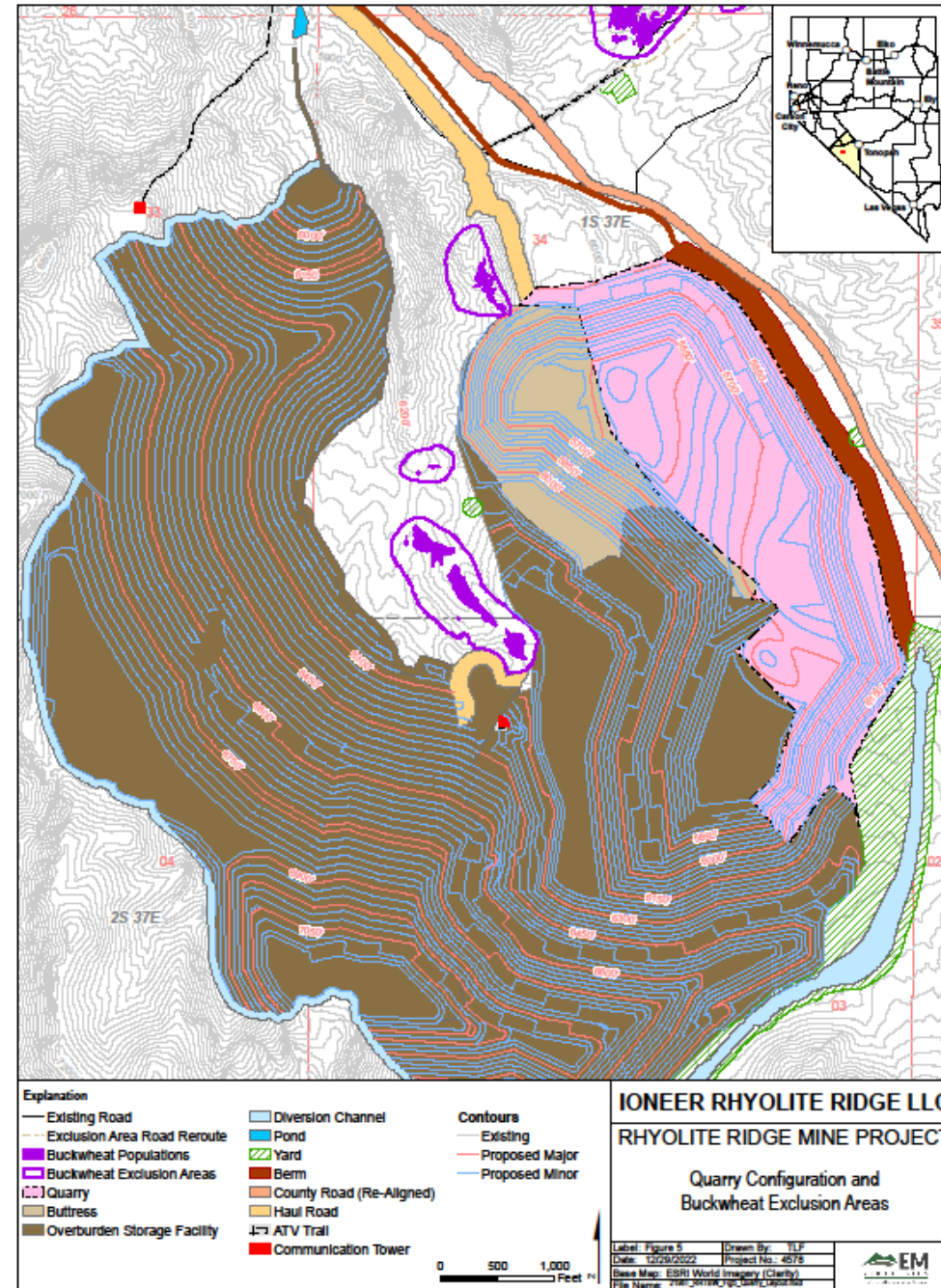


# North OSF

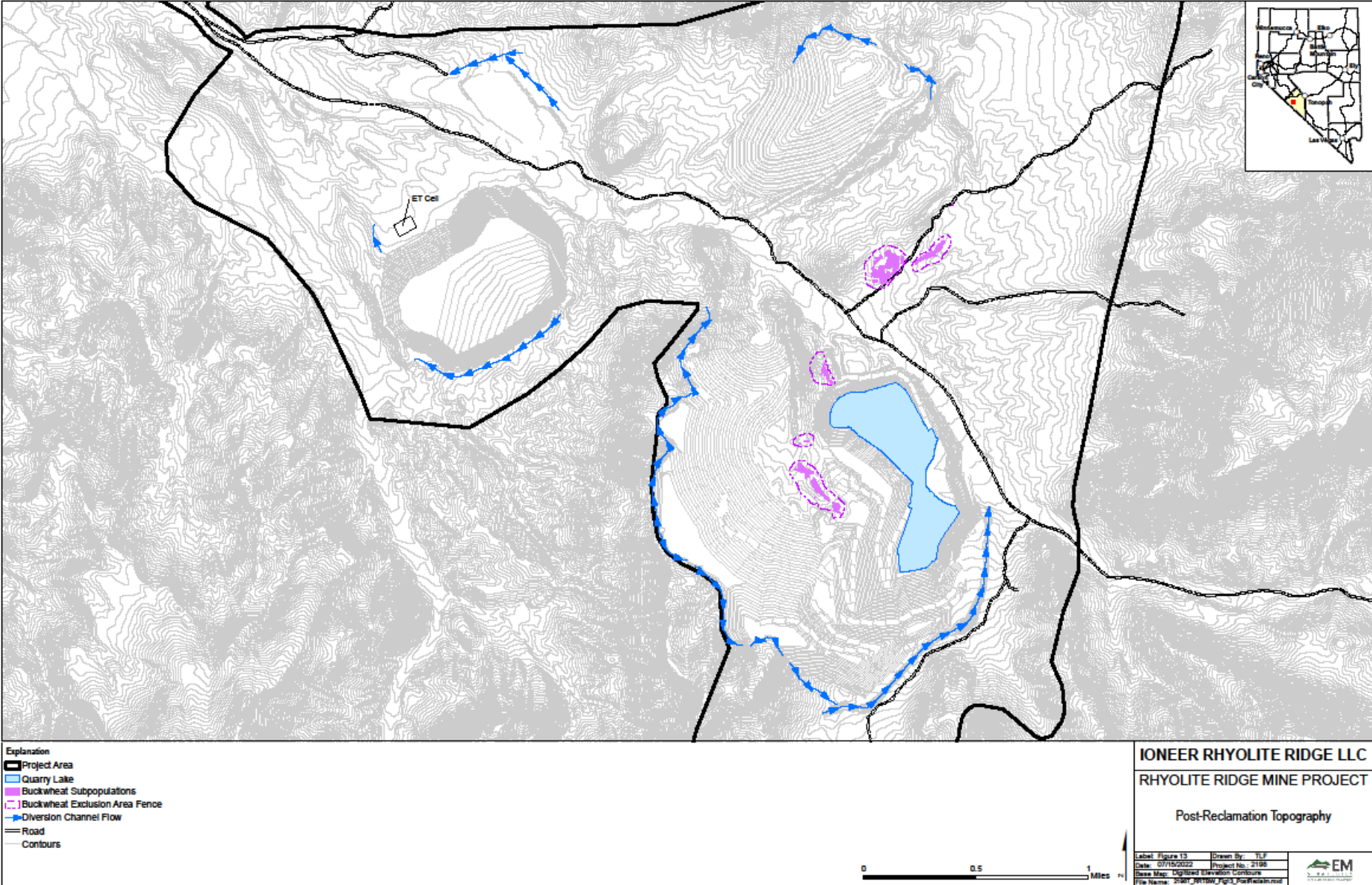




# West OSF and Buttress Placement During Reclamation



# Post-Reclamation Topography







U.S. Department of the Interior  
Bureau of Land Management

# Baseline Studies

- Surface Water Resources Baseline Technical Report
- Geochemical Characterization Report
- Hydrogeology Report
- Ecological Risk Assessment for the Quarry Lake
- Aquatic Resources Delineation
- Wildlife and Vegetation Studies – Baseline Biological Survey Reports
- Air Quality Impact Analysis
- Climate and Meteorological Evaluation
- Regional Geologic Description Tech Memo
- Geology and Minerals Resource Baseline Technical Report
- Soils and Rangeland Baseline Technical Report
- Recreation and Wilderness Baseline Technical Report
- Visual Resources Technical Report
- Land Use, Transportation, and Access Baseline Technical Report
- Socioeconomic Baseline Technical Report
- Paleontological Resource Survey and Report





U.S. Department of the Interior  
Bureau of Land Management

# What Comments Will Be Addressed

## Substantive Comments

- Question the:
  - Adequacy of the environmental analysis
  - Methodology for the environmental analysis
  - Assumptions used for the environmental analysis
- Provide new information relevant to the analysis
- Causes changes or revisions in one or more of the Alternatives

## Examples

- The analysis should include \_\_\_ resources and potential impacts
- New data from (site the information) should be included in the analysis
- Alternatives to avoid potential impacts to \_\_\_ should be included

*\*If your comment doesn't identify a specific concern it likely isn't substantive*



U.S. Department of the Interior  
Bureau of Land Management

# What Comments Will NOT Be Addressed

## Non-Substantive Comments

- In Favor or Against the proposal w/out reasoning
- A vote
- Don't like the analysis
- Agree or disagree with policy
- Don't pertain to the project or project area
- Vague open-ended questions

## Examples

- I like/dislike the proposal
- This isn't fair
- What are you going to do about \_\_\_\_\_?

*\*If your comment doesn't identify specific concerns it likely isn't substantive*





U.S. Department of the Interior  
Bureau of Land Management

# Where to Submit Comments

Formal comments may be submitted for the Project by the following methods:

1. On-line through the BLM ePlanning website at:

<https://eplanning.blm.gov/eplanning-ui/project/2012309/510>

2. By email at [BLM NV BMDO TFO NONRENEWABLE@blm.gov](mailto:BLM_NV_BMDO_TFO_NONRENEWABLE@blm.gov) with “Rhyolite Ridge Lithium-Boron Project EIS” in the subject line

3. By regular mail to the following address:

Bureau of Land Management  
Attn: Rhyolite Ridge Lithium-Boron Project  
50 Bastian Road  
Battle Mountain, Nevada 89820





U.S. Department of the Interior  
Bureau of Land Management

# Q&A Session



## How to Ask Questions

**Zoom** - Type your question into the question and answer box or raise your hand to be called on. When recognized by the moderator unmute and ask your question.

**Phone** - Press \*9 to raise your hand, when recognized by the moderator hit \*6 to unmute and ask your question.

## How to Submit Scoping Comments

ePlanning Website: <https://eplanning.blm.gov/eplanning-ui/project/2012309/510>

Email: [BLM\\_NV\\_BMDO\\_TFO\\_NONRENEWABLE@blm.gov](mailto:BLM_NV_BMDO_TFO_NONRENEWABLE@blm.gov)

Mailing Address: Bureau of Land Management  
Attn: Rhyolite Ridge Lithium-Boron Project  
50 Bastian Road  
Battle Mountain, Nevada 89820