



U.S. Department of the Interior  
Bureau of Land Management

# Archie Creek

## Fire Salvage and Hazard Tree Removal

Virtual Public Meeting  
December 16<sup>th</sup>  
5:30 PM- 7:00 PM







# Welcome and Introductions

- **Cheyne Rossbach**      **Public Affairs**
- **Mike Korn**              **Swiftwater Field Manager**
- **James Mahaffy**        **Swiftwater Planning Forester**
- **Kelly Ware**             **South River Planning  
& Environmental Specialist**





# Welcome and Introductions

## Housekeeping:

**Welcome! Thank you for joining this evening!**

- **Meeting is from 5:30 p.m. to 7:00 p.m.**
- **Meeting will be recorded - Available online.**
- **There will be several breaks during the presentation where we will field questions.**
- **Please type questions into the chat box.**
- **If we are not able to get to your question, please submit additional questions to:**

**[BLM\\_OR\\_RB\\_Archie\\_Creek\\_Fire\\_Salvage\\_EA@blm.gov](mailto:BLM_OR_RB_Archie_Creek_Fire_Salvage_EA@blm.gov)**





U.S. Department of the Interior  
Bureau of Land Management

# Field Manager Introduction – Mike Korn

- The Purpose of this meeting is to communicate BLM's proposal for salvage of Harvest Land Base (HLB) stands and Hazard Tree Removal within the Archie Creek Fire Perimeter.







# Why a Virtual Tour instead of a Field Trip ?

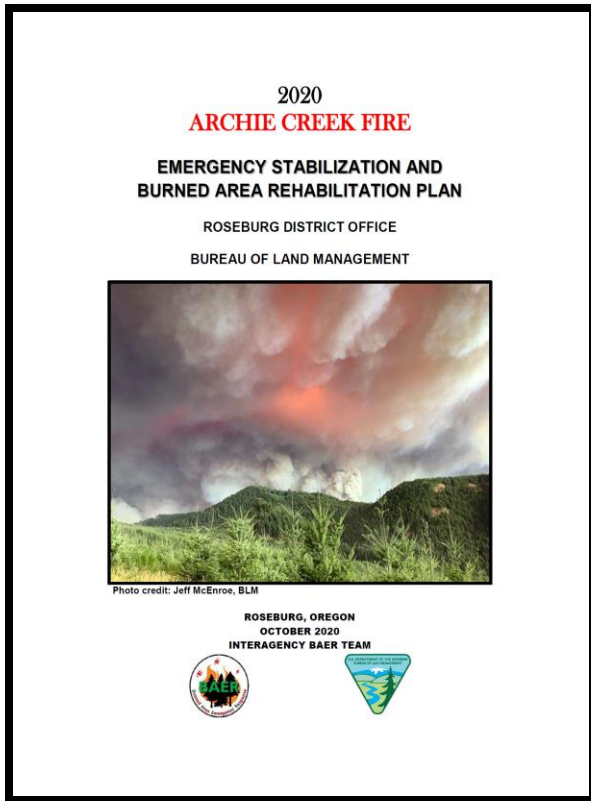
- Hazard Trees are prevalent in the fire interior.
- Roads that have been somewhat snagged have multiple active Operations.
- Covid-19 considerations.







# Current Ongoing Activities within the Archie Perimeter



[https://inciweb.nwcg.gov/photos/ORROD/2020-09-09-1334-Archie-Creek/related\\_files/pict20201116-183939-0.pdf](https://inciweb.nwcg.gov/photos/ORROD/2020-09-09-1334-Archie-Creek/related_files/pict20201116-183939-0.pdf)

## Non-BLM Specific Activities

- Hazard Tree Removal for utility lines
- ODOT/FEMA Hazard Tree & HAZMAT Removal
- Private Lands Salvage and hazard Tree Removal
- Archie Creek Fire Rights-of-Way Temporary Use Areas

## BLM Specific Activities

- Archie Creek Fire - Log Deck Removal
- Rock Creek Stream Restoration
- Recreation site Hazmat Removal & Reconstruction
- High Priority Hazard Tree Removal
- Reforestation
- Culvert Replacements
- Stabilization activities (seeding/storm patrols)
- Noxious weed monitoring & Treatments





U.S. Department of the Interior  
Bureau of Land Management

# TIMING IS CRITICAL

The majority of stands available for salvage harvest are <80 years of age and merchantable utility will quickly be lost.

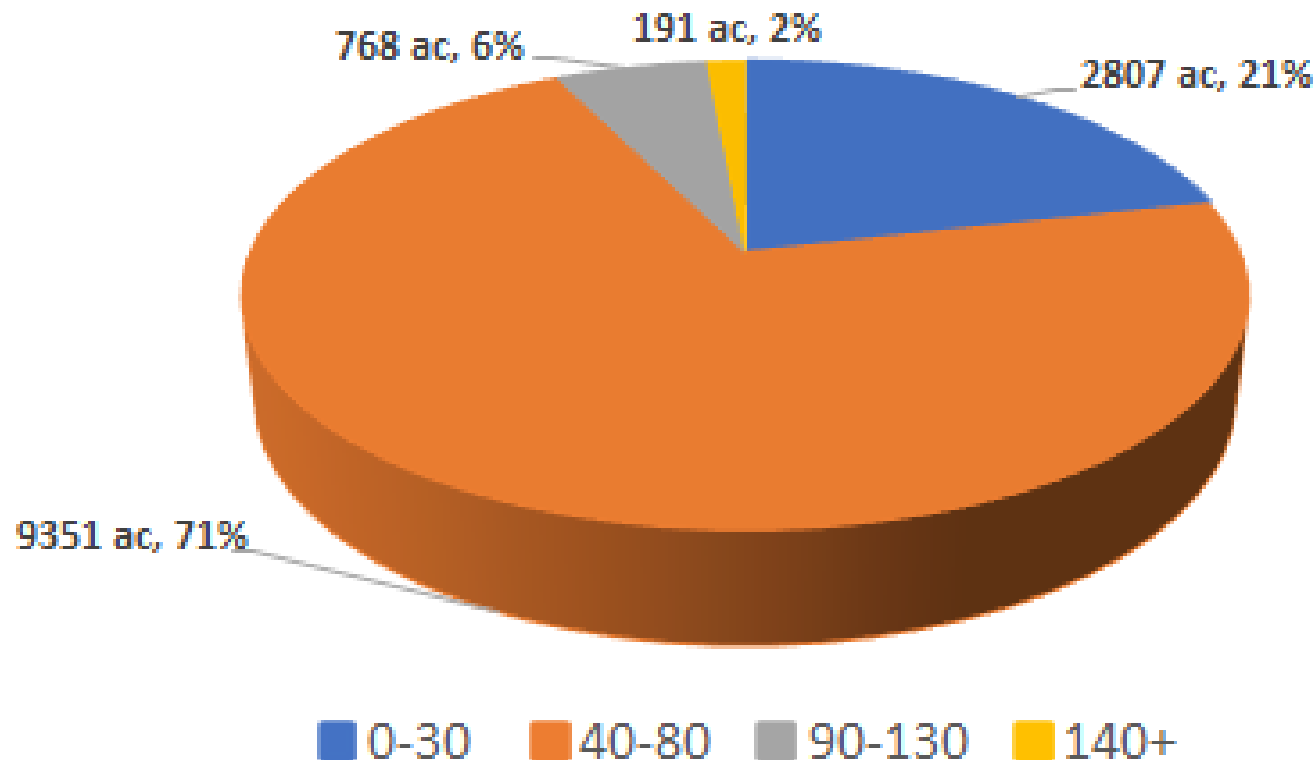






# Age Class Distribution of the Harvest Land Base

## Harvest Land Base Acreage within Archie Creek Fire Perimeter - by Age Class







# Scoping – What is it?

**Scoping is a process by which the BLM solicits internal and external input on issues, impacts, and potential alternatives that could be addressed in an EIS or EA, as well as the extent to which those issues and impacts would be analyzed in the NEPA document.**

- Decisionmaker has discretion to determine the need and level of scoping
- External scoping is optional for preparation of an Environmental Assessment
- External scoping involves notification and opportunities for feedback from:
  - State and Local Governments
  - Tribes
  - Other Agencies
  - Organizations
  - Interested Parties
  - Public





# Scoping continued...

## Scoping helps us identify...

- The purpose and need for action.
- People or organizations who are interested in the proposed action.
- Significant issues to be analyzed.
- Those issues that will not be significant or those that have been adequately covered in prior environmental review.
- Gaps in data and informational needs.
- Actions by others that may have a cumulative effect with the proposed action.
- Geographic and temporal boundaries, baselines and thresholds.
- Information needs and whether that information is essential to completing the analysis.







## PRELIMINARY Purpose and Need

*1. Implement timber salvage harvest after disturbance events to recover economic value and to minimize commercial loss or deterioration of damaged trees where the BLM determines that removal is economically viable. (NCO ROD/RMP, pp. 62-63)*

The Archie Creek fire burned over 130,000 acres, including approximately 14,000 acres of HLB. Approximately, 77% of the BLM-administered acres within the fire perimeter were classified as high or moderate burn severity resulting in a complete loss of vegetation according to Burned Area Reflectance Classification (BARC) analysis (BARC GIS Data). **The purpose of the action is to implement salvage harvest of timber in stands that are allocated to the HLB and were damaged by the Archie Creek Fire** to contribute to the Allowable Sale Quantity (ASQ).

**There is a need for timely salvage of high and moderate severity burn areas, to recover economic value from timber following disturbances before wood deterioration occurs and affected stands are no longer capable of contributing towards ASQ.** As time progresses fire-killed trees lose economic value due to insects, staining, and checking (cracks in the wood that occur as the burned wood dries). By winter of 2021/2022, the economic value of stands with high and moderate burn severity (where tree mortality is at or near 100%), could be reduced to the point that economic recovery would no longer be viable.





## PRELIMINARY Purpose and Need continued...

*2. Conduct hazard tree removal to protect public safety, roads, and infrastructure and maintain access by keeping roads and infrastructure clear of debris. (NCO ROD/RMP, pp. 56, 65, 68, 75)*

**There is a need to remove hazard trees to provide safe travel conditions** for BLM employees, agents and contractors; the employees and contractors of private timber companies engaged in the rehabilitation and reforestation of the burned area; the holders of reciprocal rights-of-way who may transport timber or mineral materials through the burned area; and the general public for activities such as recreation, special forest products gathering, hunting, driving, and residential access including the protection of private infrastructure adjacent to BLM lands.

Due to the amount of traffic related to forest management activities, as well as the legal obligation to provide access to private industrial timber lands, and holders of Federal Land Policy and Management Act (FLPMA) rights-of-way grants, closure of the roads within the Archie Creek Fire is not a viable option. As such, **hazard tree removal is necessary to protect human safety.**

**There is also a need to reduce long-term maintenance needs of BLM roads from dead trees falling onto and damaging roadways and the related infrastructure.**





U.S. Department of the Interior  
Bureau of Land Management

# Timeline Overview

Virtual Public  
Scoping Meeting  
December 16<sup>th</sup>,  
2020

Signed FONSI and  
Decision Record  
April - May  
2021

Additional  
Timber Sale  
Auctions  
October 2021



Public Scoping  
December – January 8<sup>th</sup>  
2020

Public Review of  
EA and Draft  
FONSI  
Comment Period  
March - April,  
2021

Timber Sale  
Auctions  
June - July,  
2021



U.S. Department of the Interior  
Bureau of Land Management



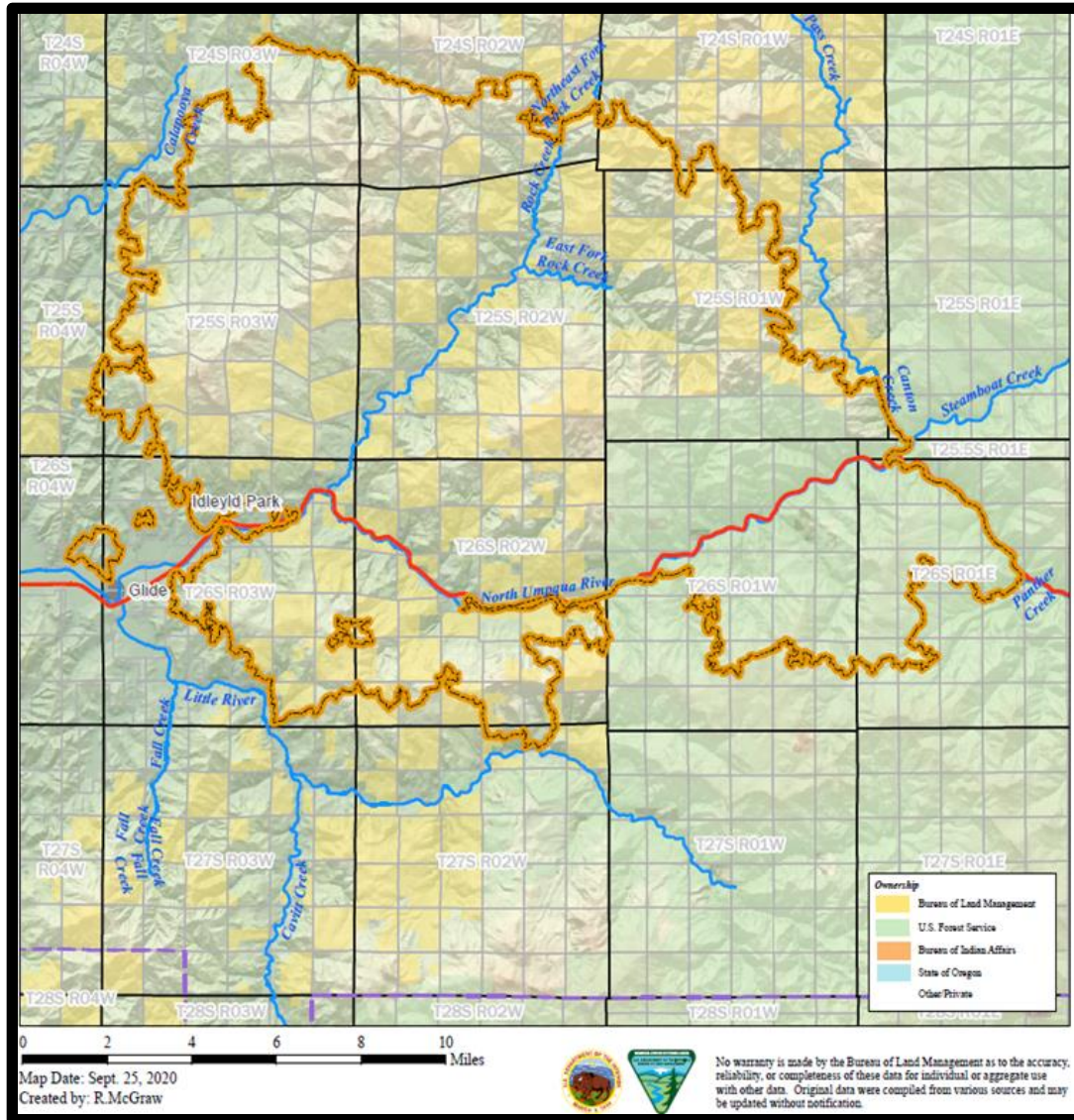
# Questions?

[BLM\\_OR\\_RB\\_Archie\\_Creek\\_Fire\\_Salvage\\_EA@blm.gov](mailto:BLM_OR_RB_Archie_Creek_Fire_Salvage_EA@blm.gov)





# Archie Creek Fire Area



## Acres Within the Fire Perimeter

- ~130,000 total acres
  - ~41,000 BLM acres,
  - ~64,000 Private acres,
  - ~25,000 Forest Service acres

## Land Use Allocations

- Harvest Land Base 13,000 ac
- Late Successional Reserve 18,800 acres
- Riparian Reserve 5,800 ac
- District Defined Reserve 1,500 ac
- Congressionally Reserved 1,500 ac
- Total BLM acres ~41,000 ac

## Roads

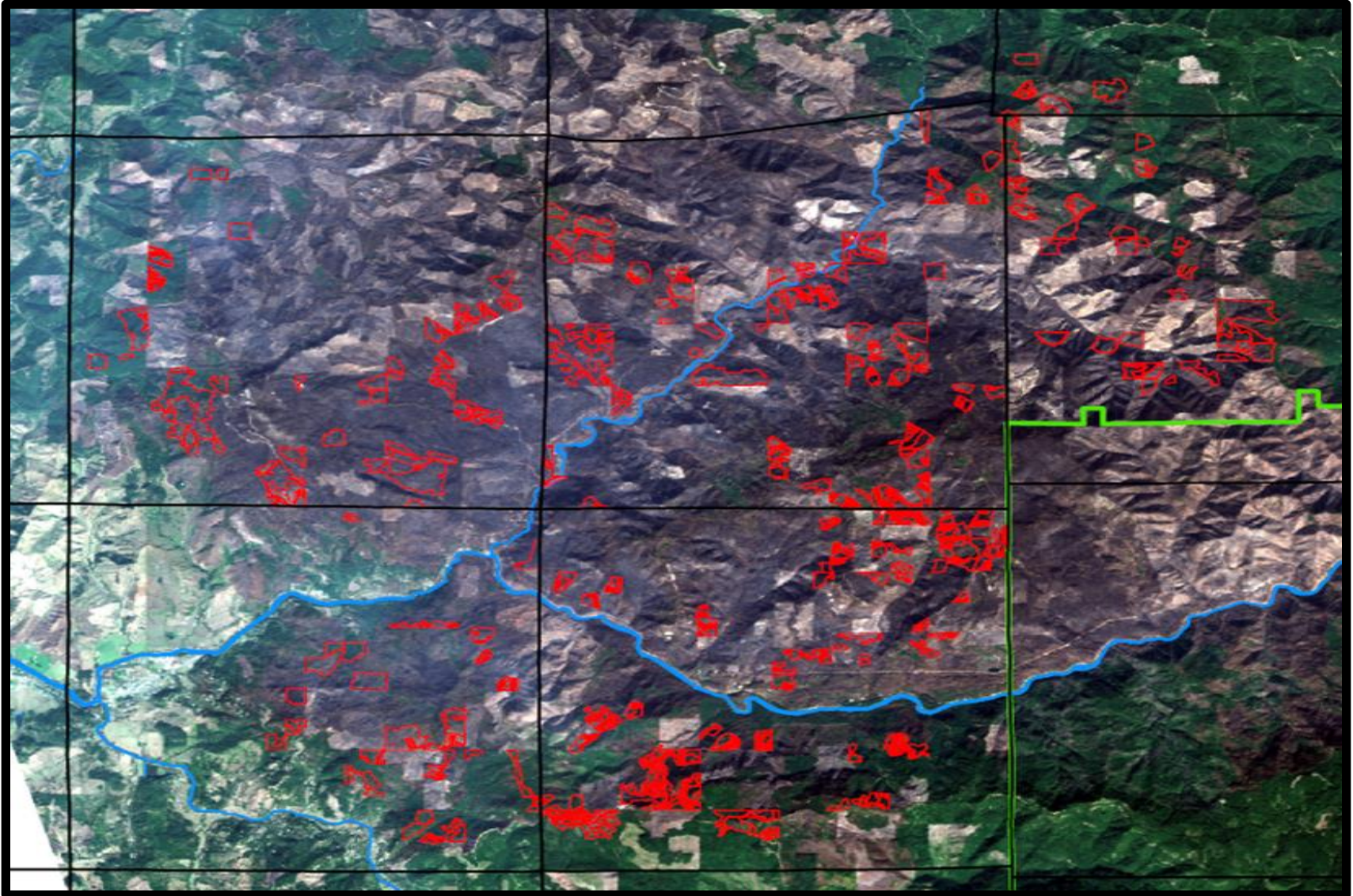
- 922 total road miles
- 286 BLM road miles
- 84 miles of mainline and collector roads





U.S. Department of the Interior  
Bureau of Land Management

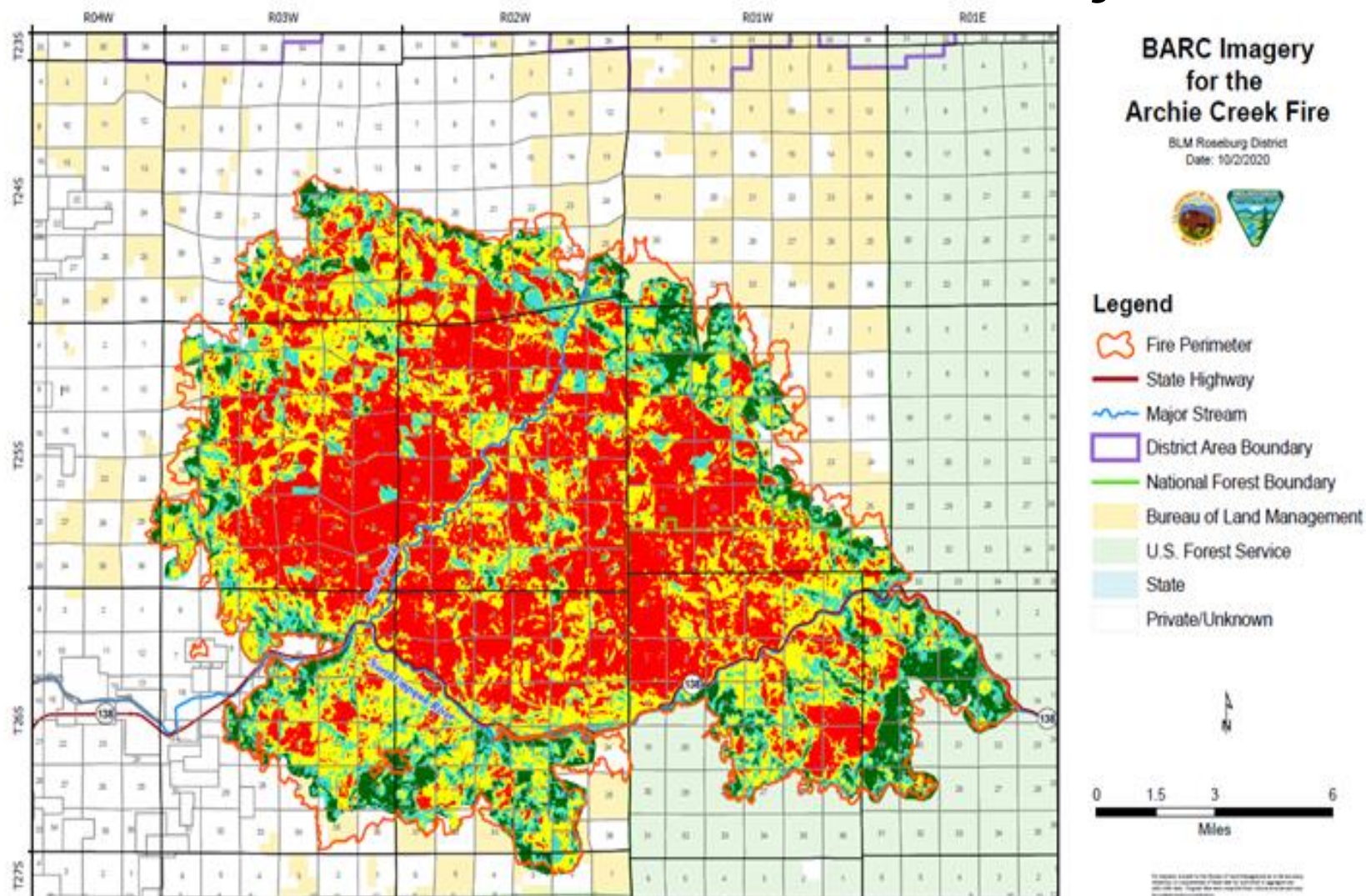
# Archie Creek Fire Imagery







# Archie Creek Fire Severity



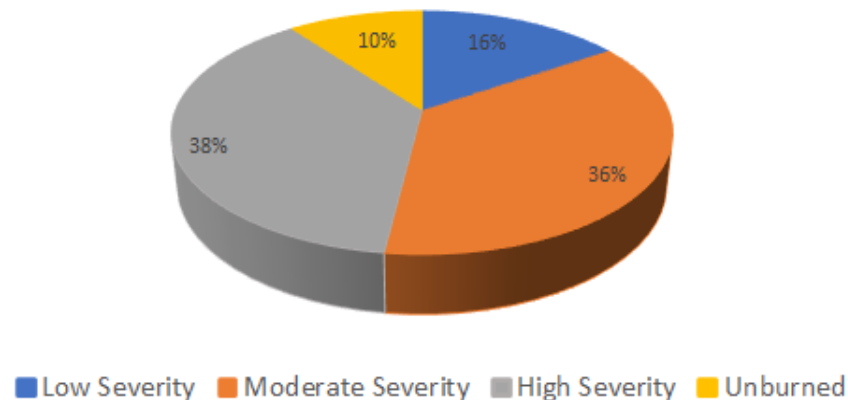


# Archie Creek Fire Severity – BLM-Managed Lands

## Approximate Acres Soil Burn Severity by Age Class (numbers not exact)

| Age Class | ac of Low | ac of Mod | ac of High | ac of Unb | Totals |
|-----------|-----------|-----------|------------|-----------|--------|
| 0 to 30   | 672       | 1582      | 2076       | 314       | 4644   |
| 40 to 80  | 2123      | 5644      | 5341       | 1883      | 14990  |
| 90 to 130 | 402       | 1452      | 1266       | 303       | 3423   |
| 140 +     | 3170      | 5874      | 6577       | 1709      | 17331  |
| subtotal  | 6367      | 14552     | 15260      | 4210      | 40388  |
|           |           |           |            |           |        |
| REC area  | 21        | 177       | 17         | 1         |        |
| totals    | 6388      | 14729     | 15276      | 4211      | 40604  |

Percent of Acres Burned by Burn Severity





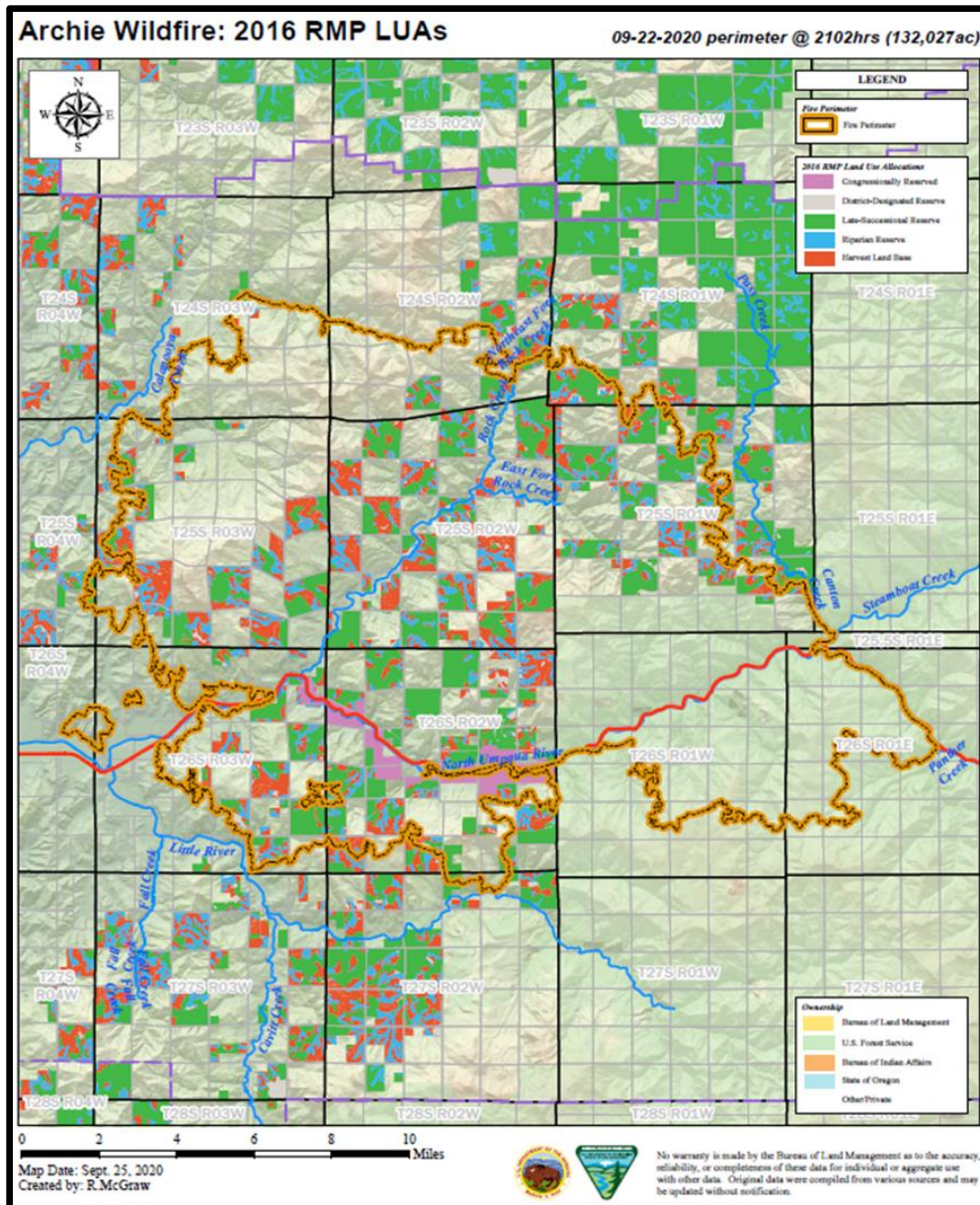


U.S. Department of the Interior  
Bureau of Land Management



# Questions?

[BLM\\_OR\\_RB\\_Archie\\_Creek\\_Fire\\_Salvage\\_EA@blm.gov](mailto:BLM_OR_RB_Archie_Creek_Fire_Salvage_EA@blm.gov)



## 2016 Northwest & Coastal Oregon Resource Management Plan

- **Harvest Land Base-** Sustained yield timber production focus
- **Late Successional Reserve** – Habitat Conservation focus
- **Riparian Reserve-** Aquatic focus
- **District Defined Reserve** - Reserved from sustained-yield timber production
- **Congressionally Reserved Lands** – Wild and Scenic River focus

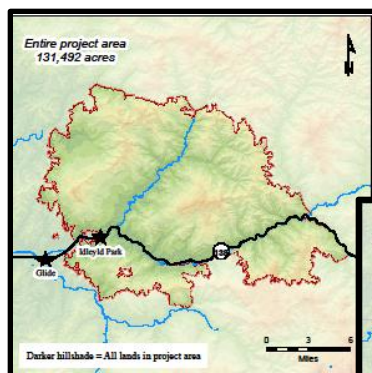




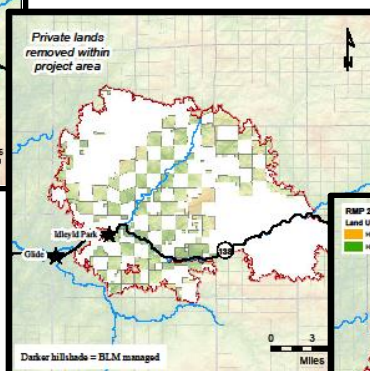


# Proposed Unit Selection Process

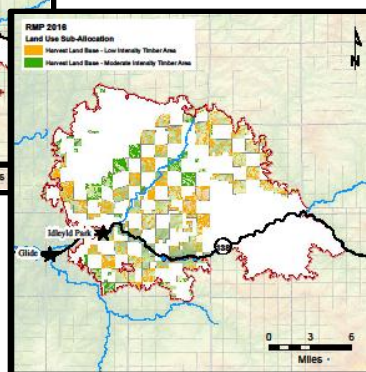
1) Start with entire project area;



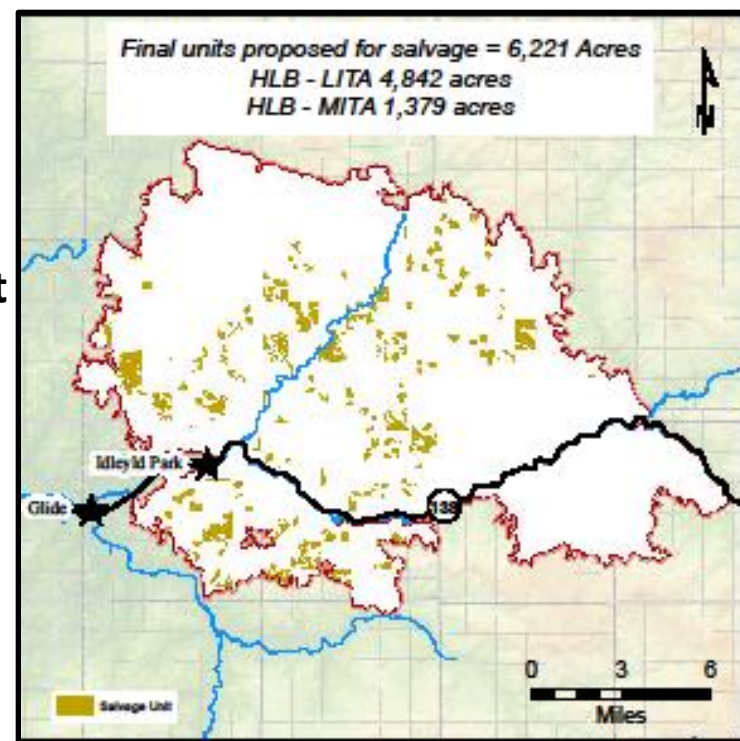
2) Select BLM Managed lands;



3) Select Harvest Land Base;



4) Apply various selection criteria and review proposed unit pool.





# Proposed Action: Harvest Land Base Salvage

- Salvage ~ 6,200 acres of Harvest Land Base (HLB) in burned stands aged 40-160 years old in the Calapooya Creek, Rock Creek, Canton Creek Little River, and Lower North Umpqua River watersheds.
- HLB—Low Intensity Timber Area (LITA) and Moderate Intensity Timber Area (MITA).
- Salvage harvesting would focus on those areas affected by moderate to high severity fire.
- 335 miles of road maintenance/renovation.

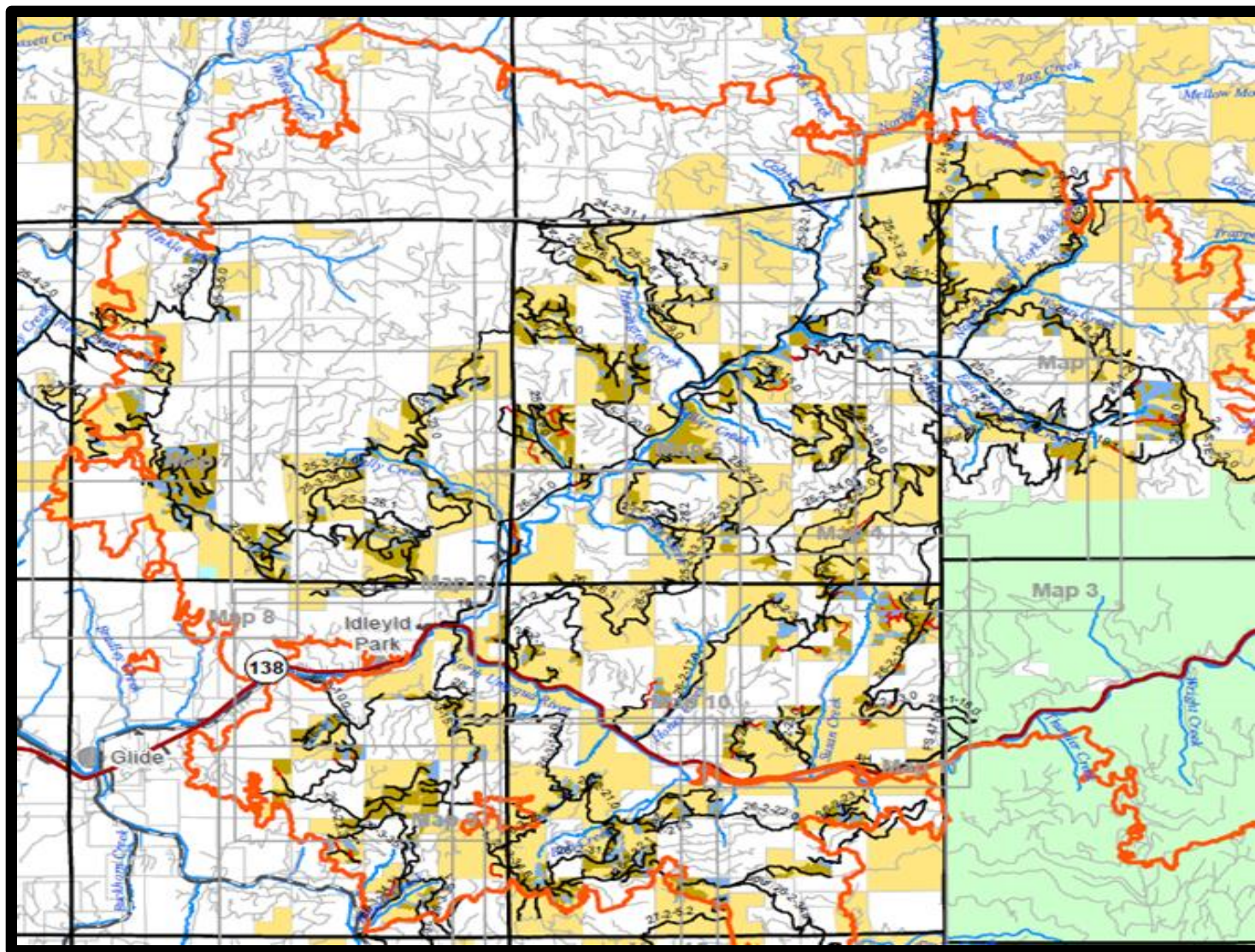
***These proposed actions form the thresholds for analysis.***





U.S. Department of the Interior  
Bureau of Land Management

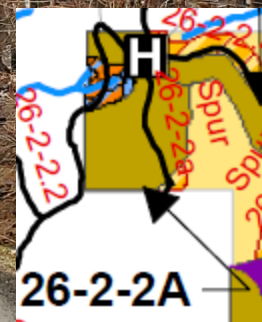
# Proposed Action: Vicinity Map







U.S. Department of the Interior  
Bureau of Land Management

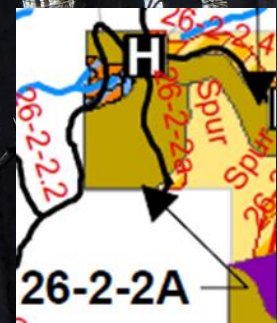


Unit 26-2-2A  
Map p. 6-11





U.S. Department of the Interior  
Bureau of Land Management

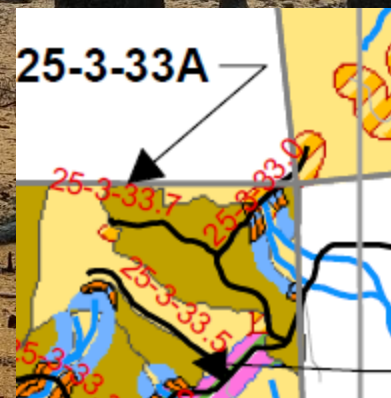


**Unit 26-2-2A**  
**Map p. 611**



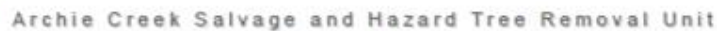
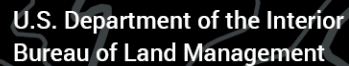


U.S. Department of the Interior  
Bureau of Land Management

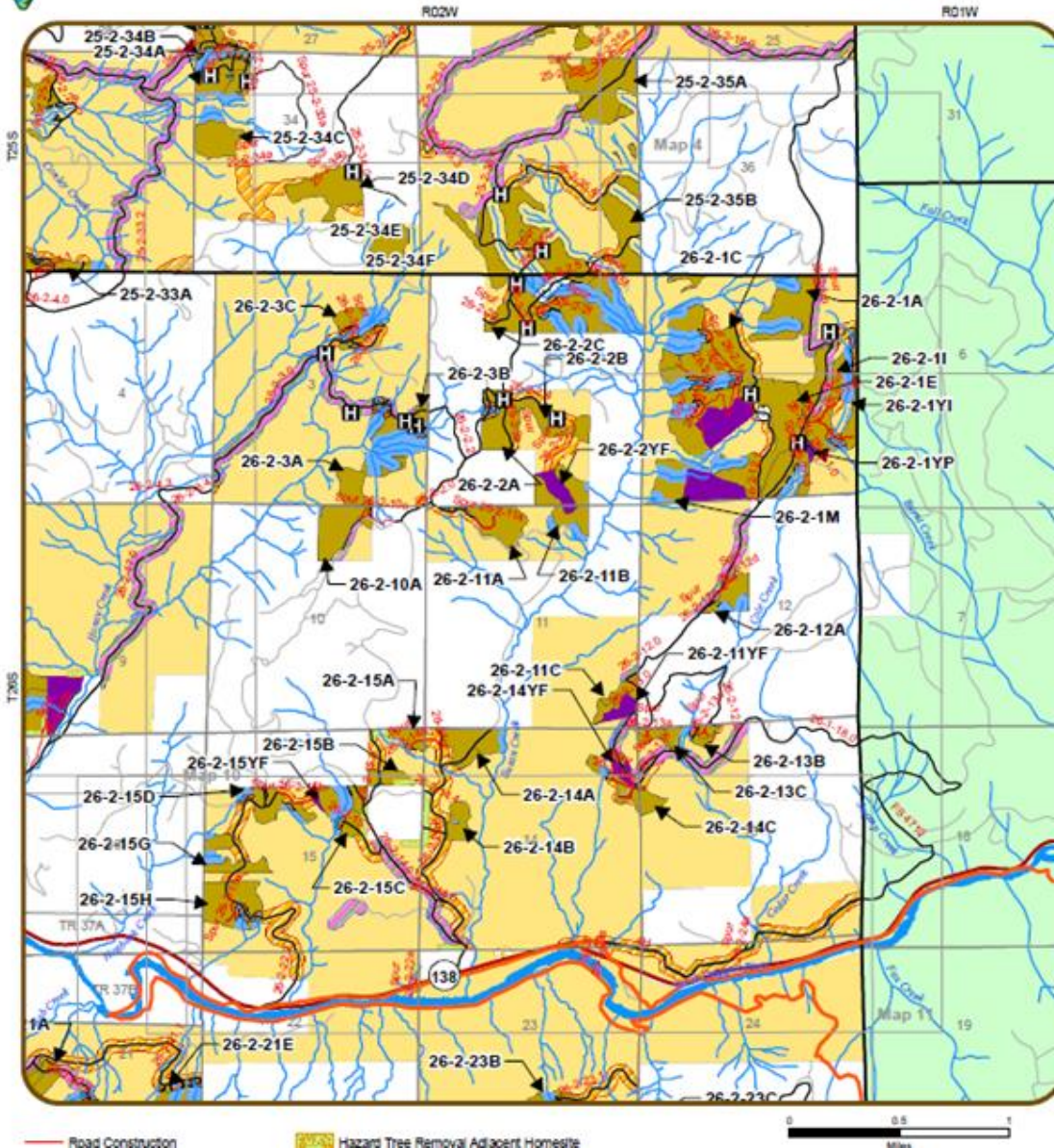


Unit 25-2-33A  
Map p. 6



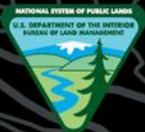


Map 11 of 14



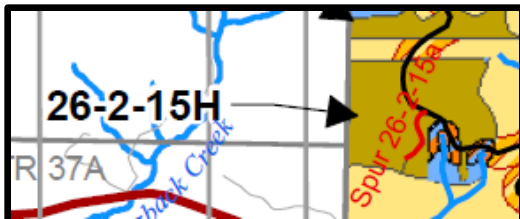
- 15 miles of road construction
- ~~175~~ 249 acres of yarding corridors or wedges
- 500 acres of Salvage Unit Riparian Reserve hazard tree removal
- 90 acres of helicopter landings
- Road decommissioning

Correction  
from presented  
powerpoint

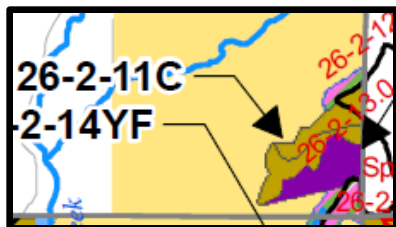


U.S. Department of the Interior  
Bureau of Land Management

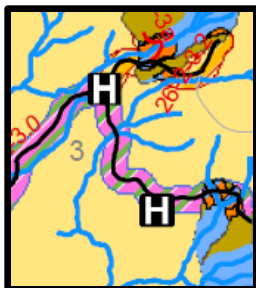
# Supporting Actions



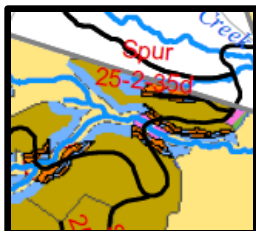
Road Construction  
— Road Construction



Yarding Corridors or Wedges  
Salvage Yarding Corridor



Helicopter landings  
H Salvage Helicopter Landing



Hazard Tree Removal  
Salvage Unit RR Hazard Tree Removal





# Proposed Action: Hazard Tree Removal

Hazard tree removal is proposed in, adjacent, or along:

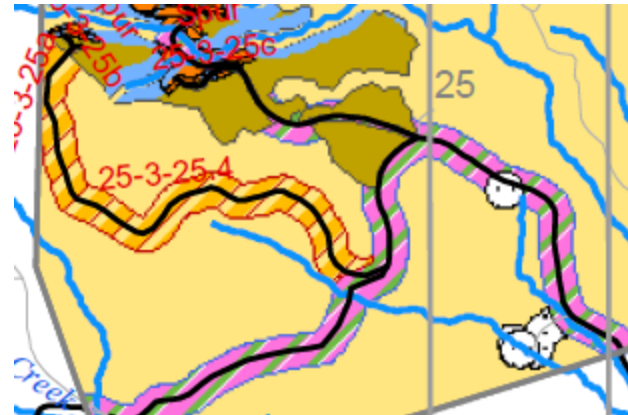
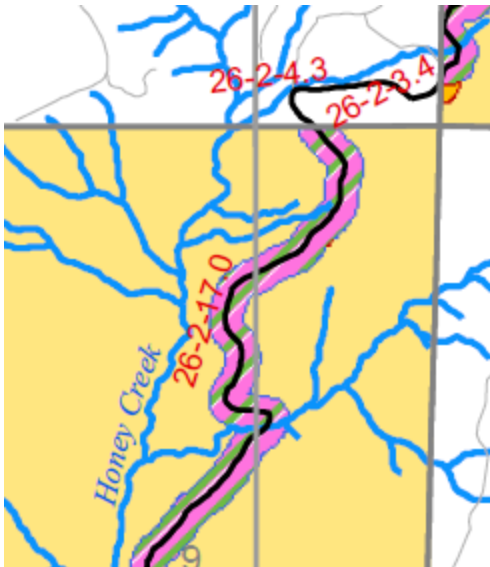
- Main lines and collector roads
- Haul routes
- Recreation sites
- Resource roads
- Adjacent home site
- Pump chances

Hazard tree removal would occur within 150 feet from roads, recreation site boundaries, adjacent homesite boundaries, and pump chances.



# Proposed Action: Hazard Tree Removal

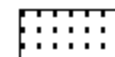
- 2,197 acres of hazard tree removal along **mainline and collector** roads.
- 2,038 acres of hazard tree removal along **salvage unit haul routes**.
- 150 acres of hazard tree removal for **pump chances and access roads**.



Hazard Tree Removal Haul Route



Hazard Tree Removal Maintenance Level 3, 4, 5 Road



Hazard Tree Removal Pump Chance





U.S. Department of the Interior  
Bureau of Land Management







U.S. Department of the Interior  
Bureau of Land Management







## Proposed Action: Hazard Tree Removal - Recreation Sites

- 233 acres of hazard tree removal in and adjacent to the Rock Creek, Lone Pine, and Mill Pond Campgrounds; the Swiftwater Trailhead; Emerald Waters Recreation Site (formerly Swiftwater Park); Baker Wayside; Rock Creek Administrative Site; and Susan Creek Falls Trailhead.



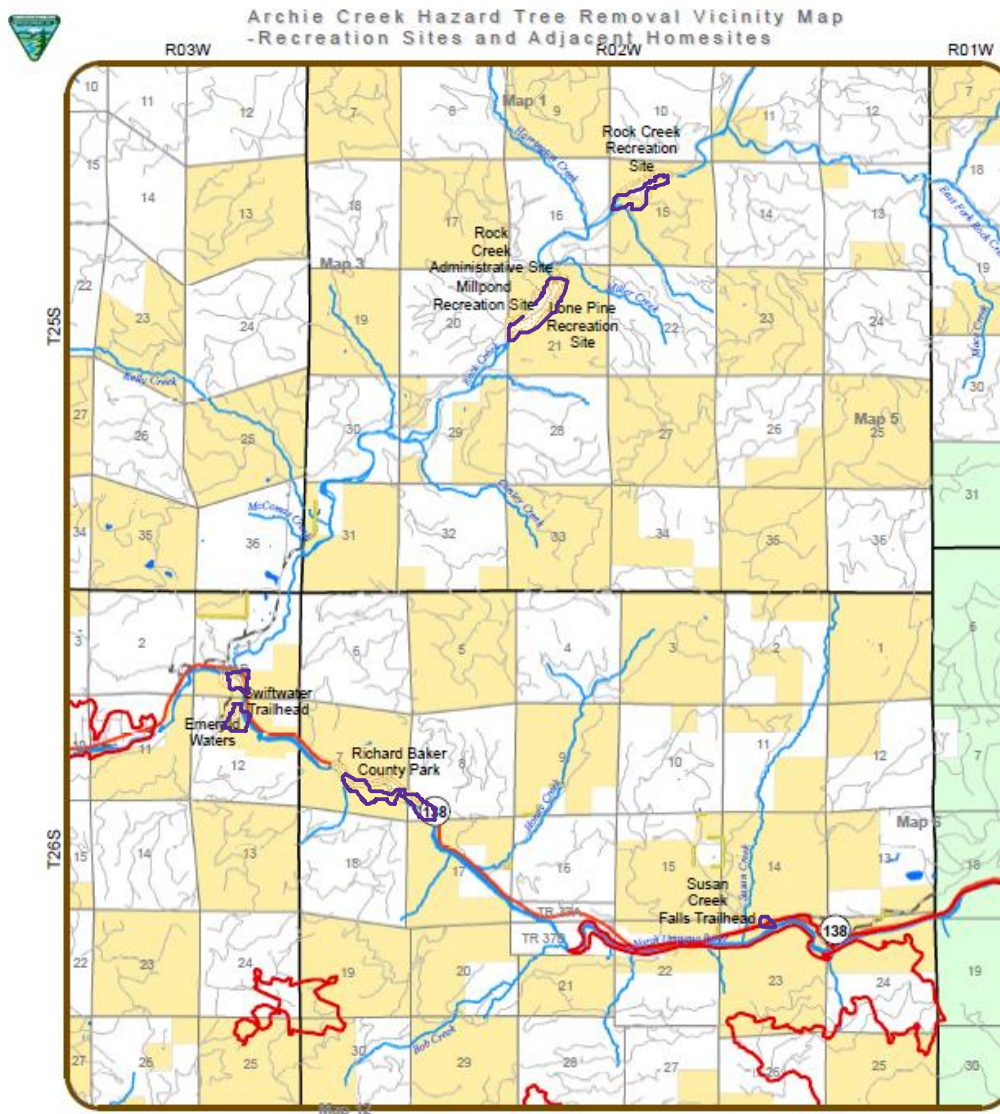
Millpond Campground





U.S. Department of the Interior  
Bureau of Land Management

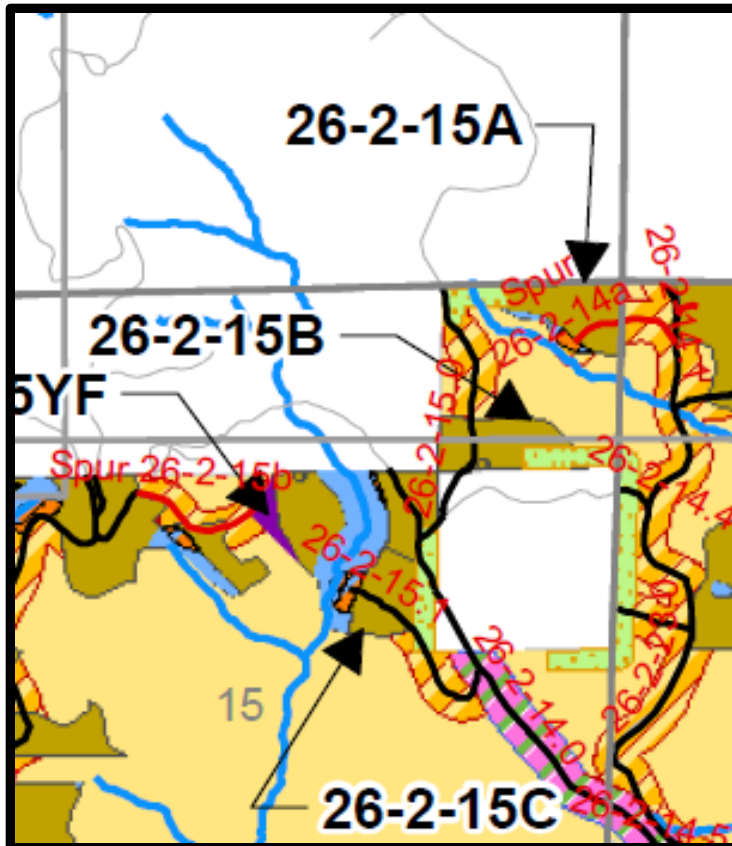
# Proposed Action: Hazard Tree Removal - Recreation Sites





## Proposed Action: Hazard Tree Removal – Property Lines

- Approximately 50 acres of hazard tree removal along private parcels with infrastructure adjacent to the BLM.



Hazard Tree Removal Adjacent Homesite





U.S. Department of the Interior  
Bureau of Land Management







U.S. Department of the Interior  
Bureau of Land Management



# Questions?

[BLM\\_OR\\_RB\\_Archie\\_Creek\\_Fire\\_Salvage\\_EA@blm.gov](mailto:BLM_OR_RB_Archie_Creek_Fire_Salvage_EA@blm.gov)





# How to Comment

The BLM welcomes substantive comments on this proposal by 4:30 PM Pacific Time on January 8, 2021.

Substantive scoping comments do one or more of the following:

- present new information relevant to the proposal
- present reasonable alternatives to the proposed action
- present issues for analysis
- cause changes or revisions in one or more of the alternatives

Comments that are not considered substantive are:

- comments in favor of or against the proposed action
- comments that only agree or disagree with BLM policy or resource decisions without justification or supporting data (i.e., "salvage in all land use allocations should be permitted")
- comments that do not pertain to the project or project area
- comments that are vague or open-ended questions
- comments that merely cite other comments or sources





U.S. Department of the Interior  
Bureau of Land Management

## How to Comment cont...

Submit written comments to:

Email: [BLM\\_OR\\_RB\\_Archie\\_Creek\\_Fire\\_Salvage\\_EA@blm.gov](mailto:BLM_OR_RB_Archie_Creek_Fire_Salvage_EA@blm.gov)

Please specify the project name in the subject line of your email.

Mail or Hand Delivery: Mike Korn  
Bureau of Land Management  
777 NW Garden Valley Blvd.  
Roseburg OR, 97471

Before including your address, phone number, e-mail address, or other personal identifying information in your comment, be advised that your entire comment – including your personal identifying information – may be made publicly available at any time. While you can ask us in your comment to withhold from public review your personal identifying information, we cannot guarantee that we will be able to do so.

The BLM thanks you for your interest in public land management!