



Wood River Valley Recreation and Access EA Decision Record Trails to be Constructed

Shoshone Field Office
Twin Falls District, Bureau of Land Management

Road or Trail Designation	Types of Users Allowed
Non-Mechanized	Foot and Horseback
Non-Motorized	Mountain Bike, Foot and Horseback
Motorized Limited to Class 1 ebike	Class 1 ebike, Mountain Bike, Foot and Horseback
Motorized Limited to Class 1, 2 & 3 ebike	Class 1, 2 & e bike, Mountain Bike, Foot and Horseback
Motorized Single-Track	Motorcycle, Class 1, 2 & 3 ebike, Mountain Bike, Foot and Horseback
ATV < 50"	ATVs < 50" in width, Motorcycle, Class 1, 2 & 3 ebike, Mountain Bike, Foot and Horseback
Campsite or Trailhead Road	All types of motorized vehicles (OHVs) and non-motorized vehicles

Legend

- ATV - < 50"
- Campsite or Trailhead Road
- Motorized - Single Track
- Motorized Class 1 E-Bike
- Motorized Class 1, 2 & 3 E-Bike
- Non-Motorized - No E-Bike
- Non-BLM Trail Connectors
- Existing Road
- Existing Trail
- Non BLM Routes

Project Boundary

Bureau of Land Management

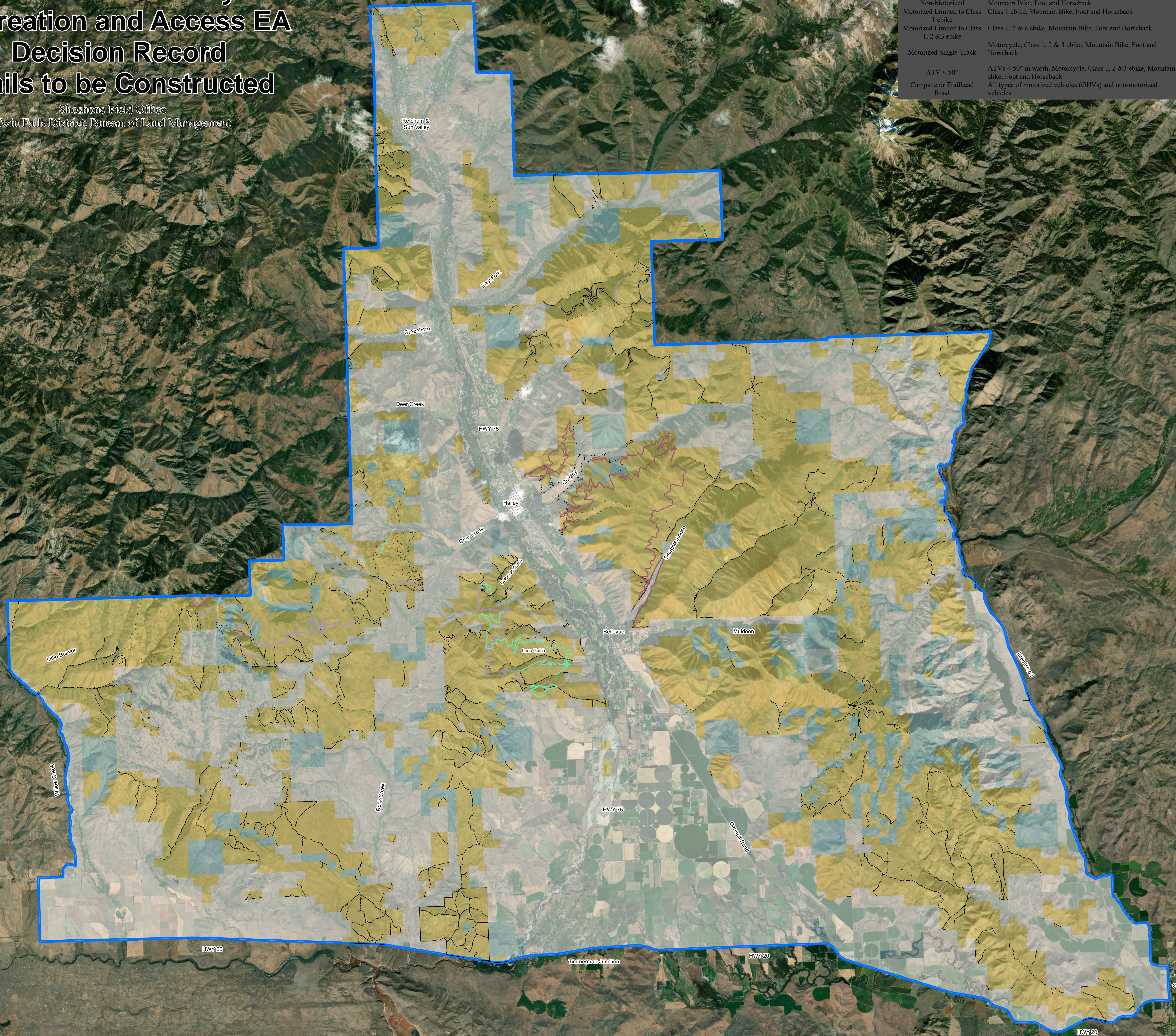
Bureau of Reclamation

Forest Service

Private; other

State

State Fish and Game



Data is provided by Bureau of Land Management (BLM) "as is" and might contain errors or omissions. The User assumes the entire risk associated with its use of this data and bears all responsibility in determining whether this data is fit for the User's intended use.



1:60,000
Map Projection: NAD 1983 UTM Zone 11N
Map Created: 10/6/2020

