



Bureau of Land Management,  
Humboldt River Field Office

# Proposed Thacker Pass Lithium Mine Project Draft Environmental Impact Statement

---

## Public Meetings

August 19, 2020 – 1:00 to 2:30 pm

August 20, 2020 – 6:30 to 8:00 pm





U.S. Department of the Interior  
Bureau of Land Management

# Thacker Pass Lithium Mine Project

## Draft EIS Public Meeting

# Welcome

Presentations begin at 1:00 pm and 6:30 pm (PT)

Hosted by Chris Bush





U.S. Department of the Interior  
Bureau of Land Management

# Meeting Agenda

## Goals for the meeting

- Provide an overview of the Project
- Provide an overview of the BLM NEPA Process
- Provide an overview of the Proposed Action and Alternatives
- Provide an overview of document format
- Provide options for accessing the documents
- Provide options for submitting comments
- Explain what a "substantive" comment is and why it is so important to the BLM.





U.S. Department of the Interior  
Bureau of Land Management

**All comments need to be submitted in writing by one of these options-**

- Web- <https://eplanning.blm.gov/eplanning-ui/project/1503166>
- Email- [blm\\_nv\\_wdo\\_thacker\\_pass@blm.gov](mailto:blm_nv_wdo_thacker_pass@blm.gov)
- Mail- Attn. Ken Loda  
Bureau of Land Management  
5100 East Winnemucca Blvd.  
Winnemucca, NV 89445
- Fax- at 775-623-1503, with "Thacker Pass EIS (Loda)" in the subject line

**The Ground Rules for this meeting are-**

- The purpose of this meeting is to share information about the project and solicit comment via the methodologies listed above.
- Questions will be held until after the last speaker has concluded
- The question period at the end of the virtual meeting is intended to assist the public in locating information in the DEIS and address any questions about how to submit comments
- Questions or statements during this meeting will not be considered formal comments on the draft DEIS.
- Please respect our presenters
- Please, no foul language. This meeting is being recorded and will be available for viewing on the ePlanning website.
- If you have phoned in and have a question
  - please "raise your hand" by hitting \*9, then hit \*6 to unmute
- We will be operating under a "no tolerance" provision
  - If rules are broken, you will be removed from the virtual meeting





## Bureau of Land Management, Humboldt River Field Office

- Facilitator - Chris Bush (Chief of BLM Nevada External Affairs)
- Heather O'Hanlon (Winnemucca District Public Affairs Officer)
- Ted Grandy (Lithium Nevada Vice President of Legal and Regulatory Affairs)
- Ken Loda (Winnemucca District Lead Geologist)
- Robin Michel (Winnemucca District Planning and Environmental Coordinator)
- Ester McCullough (Winnemucca District Manager)
- Thomas Leeman (U.S. Fish and Wildlife Service)
- Andrew Newman (ICF Senior Biologist/Project Manager)

Name	Role
Ken Loda	Project Lead
Ester McCullough	Winnemucca District Manager
Robin Michel	NEPA Lead
Sandra Brewer	NSO NEPA support / Toxicologist
Erica Anderson	Project Solicitor
TBA	Field Manager
Lynn Ricci	NEPA Compliance
Dan Erbes	Hydrology
Kruze Kinder	Range
Craig Nicholls	Air Quality
Melissa Hovey	Air Quality
Derek Messmer	Fire and Fuels
Clay Edmondson	Wildlife, Migratory Birds, SSS
Greg Lynch	Fisheries, T&E
Tanner Whetstone	Tribal Consultation
Gabby Lukins	Recreation, VRM, WSA
Julie Suhr-Pierce	Socioeconomics, EJ
Michael McCampbell	Vegetation, Invasive Plants
Andy Laca	Soils and Vegetation
Daniel Atkinson	BLM/NDEP Liaison

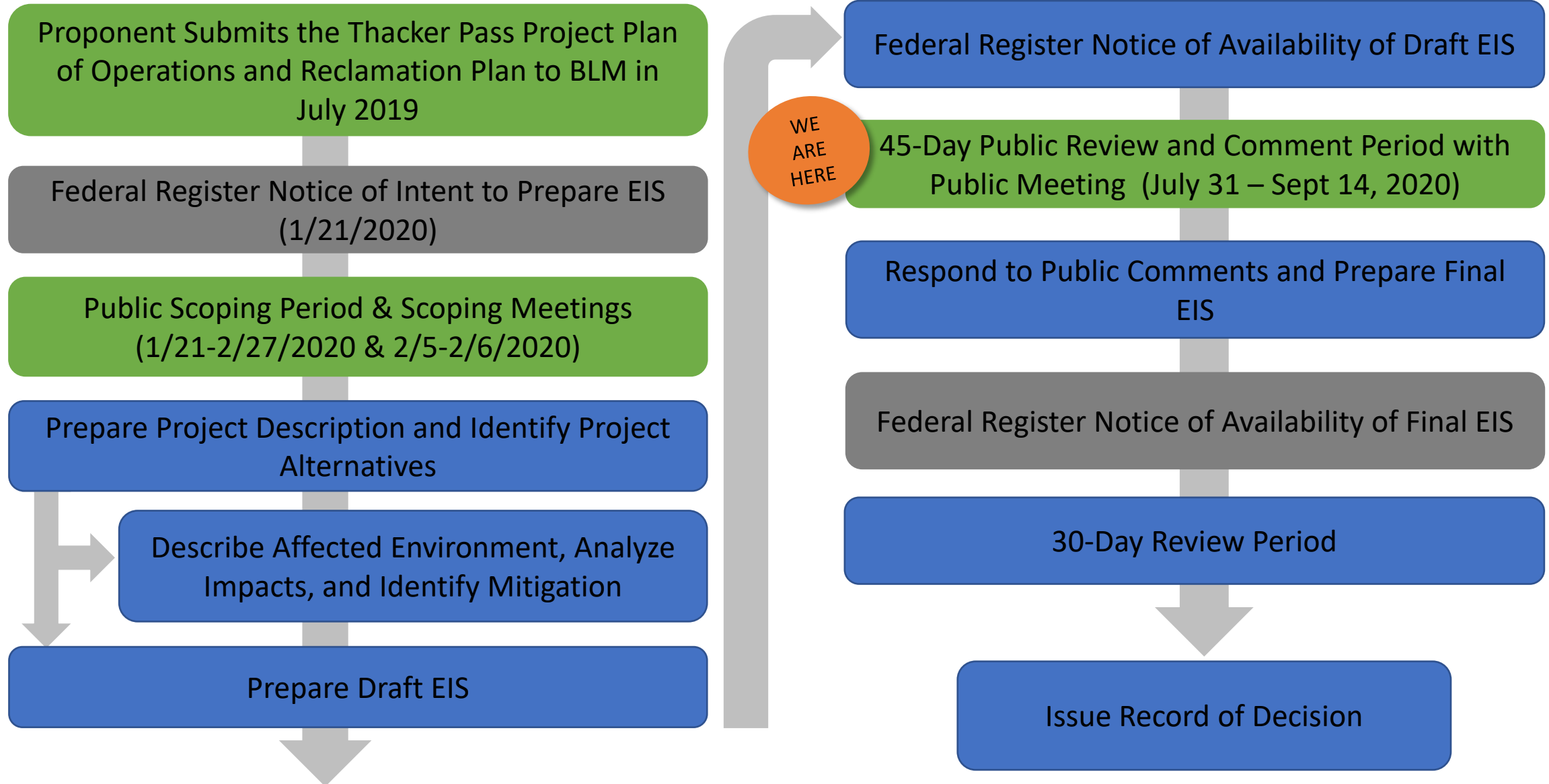


# EIS Team Introductions



U.S. Department of the Interior  
Bureau of Land Management

# NEPA Process







U.S. Department of the Interior  
Bureau of Land Management

---

# Participating Agencies

---

## Lead Agency

- Bureau of Land Management - Humboldt River Field Office

## Cooperating Agencies:

- US Environmental Protection Agency
- US Fish and Wildlife Service
- Nevada Department of Wildlife
- Nevada Department of Environmental Protection
- Nevada Sagebrush Ecosystem Technical Team
- Humboldt County

## Third Party NEPA Contractor:

- ICF





U.S. Department of the Interior  
Bureau of Land Management

# Proposed Thacker Pass Lithium Mine Project Overview

Presented by:  
Ted Grandy, Lithium Nevada Corporation



# LithiumNevada

A **Lithium**Americas Company



Thacker Pass Project  
August 2020



## CAUTIONARY STATEMENT & DISCLAIMER

### Technical Information

Scientific and technical information in this presentation about the Thacker Pass Project has been reviewed and approved by Rene LeBlanc, a qualified person under NI 43-101. Further information about the Thacker Pass Project (formerly Stage 1 of Lithium Nevada project), including a description of data verification and QA/QC programs, is available in the NI 43-101 technical report of Lithium Americas effective August 1, 2018 entitled "Technical Report on the Pre-Feasibility Study for the Thacker Pass Project, Humboldt County, Nevada, USA", available on SEDAR at [www.sedar.com](http://www.sedar.com).

The Mineral Resource and Mineral Reserve estimates contained in this press release have been prepared in accordance with the requirements of the securities laws in effect in Canada, which differ from the requirements of United States securities laws and use terms that are not recognized by the United States Securities and Exchange Commission ("SEC"). Canadian reporting requirements for disclosure of mineral properties are governed by NI 43-101. U.S. reporting requirements are governed by the SEC Industry Guide 7 under the United States Securities Act of 1933, as amended. Accordingly, technical information set forth herein may not be comparable with information made public by companies that report in accordance with U.S. standards.

### Forward-Looking Statements

This presentation contains "forward-looking information" within the meaning of applicable Canadian securities legislation, and "forward-looking statements" within the meaning of applicable United States securities legislation (collectively referred to as "forward-looking information"). All statements, other than statements of historical fact, are forward-looking information. Forward looking information can be identified by the use of statements that include words such as "anticipate", "plan", "continue", "estimate", "expect", "exceed", "may", "will", "project", "predict", "propose", "potential", "targeting", "exploring", "scheduled", "intend", "could", "might", "should", "believe" and similar words or expressions. Forward-looking information in this presentation includes, but is not limited to: successful development of the Thacker Pass project, including timing, production and operation forecasts, and results thereof; all financial estimates for the Thacker Pass project; forecasts for future lithium market demand and pricing; and statements related to the expected impact, results and benefits of the Thacker Pass project.

Forward-looking information involve known and unknown risks, assumptions and other factors that may cause actual results to differ materially. These forward-looking information reflect management's current views with respect to future events, and while considered reasonable by management at this time, there can be no certainty that they will accurately reflect actual results. Assumptions upon which such forward-looking information is based include, without limitation: long term pricing and demand growth for lithium products; Lithium Americas' (and that its subsidiaries) ability to fund, advance and develop the Thacker Pass project as currently forecast, including results therefrom; a stable and supportive legislative and regulatory environment for mining development; the impact of increasing competition; ability to operate in a safe and effective manner; and ability to obtain financing on reasonable terms or at all. Our actual results, programs and financial position could differ materially from those anticipated in such forward-looking information as a result of numerous factors, risks and uncertainties, many of which are beyond our control. These include, but are not limited to: inherent risks in development of capital intensive mineral projects; possible variations in mineral resource and reserve estimates; recovery rates; lithium prices; changes in project parameters as plans continue to be refined; changes in legislation or governmental policy; security of mineral property titles and permits; failure of plant, equipment or processes to operate as anticipated; accidents; acts of god or severe weather;

labour disputes; environmental liabilities; cost overruns or unanticipated costs and expenses; the availability of funds; and general market and industry conditions.

The foregoing list of risks, assumptions and uncertainties is not exhaustive. Additional information on these and other factors can be found in Lithium Americas' annual information form and most recently filed management discussion & analysis available on SEDAR and their equivalents on EDGAR. There can be no assurance that forward-looking information will prove to be accurate, as actual results and future events could differ materially from those anticipated in such information. Accordingly, readers are cautioned not to place undue reliance on forward-looking information. We do not intend, and expressly disclaims any obligation to, update any forward-looking information whether as a result of new information, future events or otherwise, except as, and to the extent required by, applicable securities laws.

### Forward Looking Financial Information

Certain information provided in this presentation constitutes forward-looking financial information within the meaning of applicable securities laws. Management has provided this information as of the date of this document in order to assist readers to better understand the expected results and impact of our operations. Readers are cautioned that this information may not be appropriate for any other purpose, including investment purposes, and consequently should not place undue reliance on this information. Readers are further cautioned to review the full description of risks, uncertainties and management's assumptions in Lithium Americas' most recent and annual Management's Discussion and Analysis available on SEDAR at [www.sedar.com](http://www.sedar.com). Forward-looking financial information also constitute forward-looking information within the context of applicable securities laws and as such, is subject to the same risks, uncertainties and assumptions as are set out in the cautionary note above.

### Disclaimer

Information provided in this presentation is necessarily summarized and may not contain all available material information, accordingly, readers are cautioned to review Lithium Americas' public disclosure record in full. Lithium Americas expressly disclaims any responsibility for readers reliance on this presentation. This presentation is provided for informational purposes only, and shall not form the basis of any commitment or offering. Any such commitment or offering will only be made by binding written agreement containing customary terms for transactions of such nature, and only then in compliance with applicable laws, including securities laws of Canada and the United States. This presentation is property of Lithium Americas Corp.

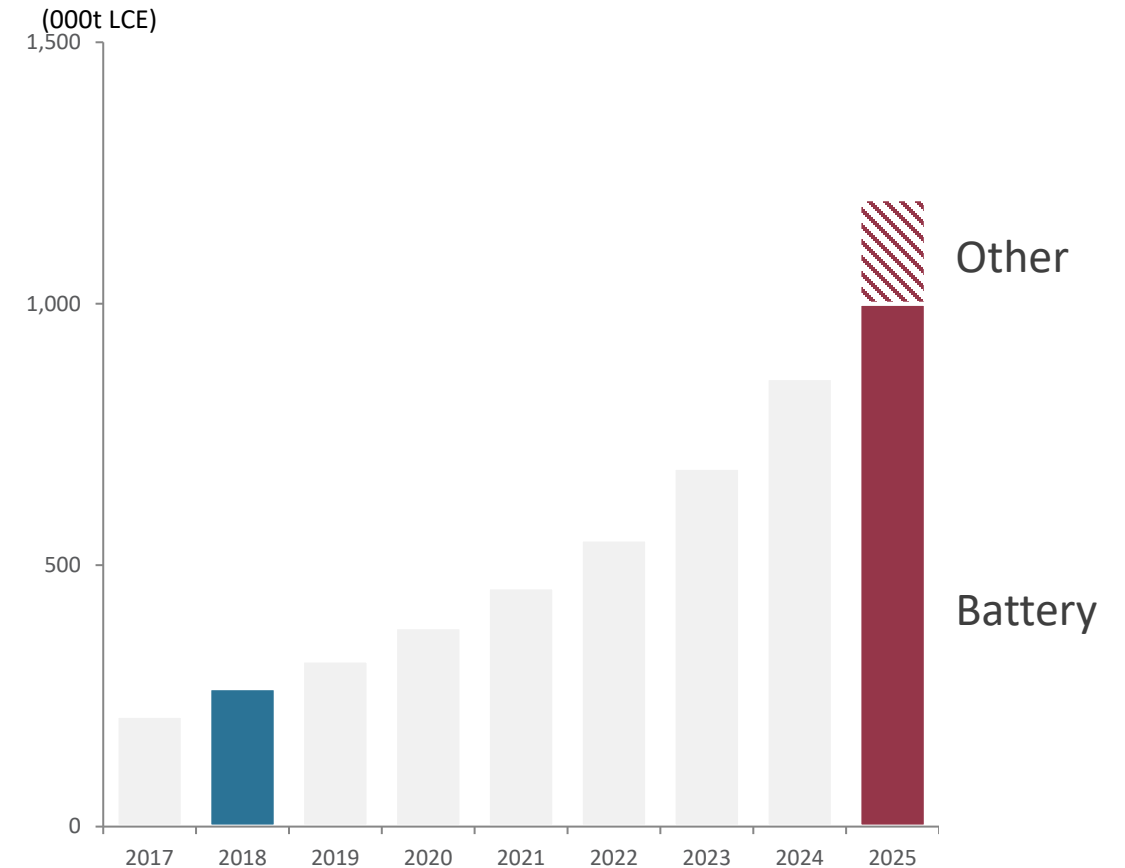
All figures in US Dollars unless otherwise noted.

## THACKER PASS PROJECT

### PROJECT PURPOSE AND NEED

- LNC's purpose for this project is to construct and operate a lithium mine and processing plant, and to pursue continued exploration on public land in the vicinity of Thacker Pass, in accordance with applicable laws.
- There is a need to satisfy the nation's growing demand for lithium, a critical mineral for US economic security and defense.

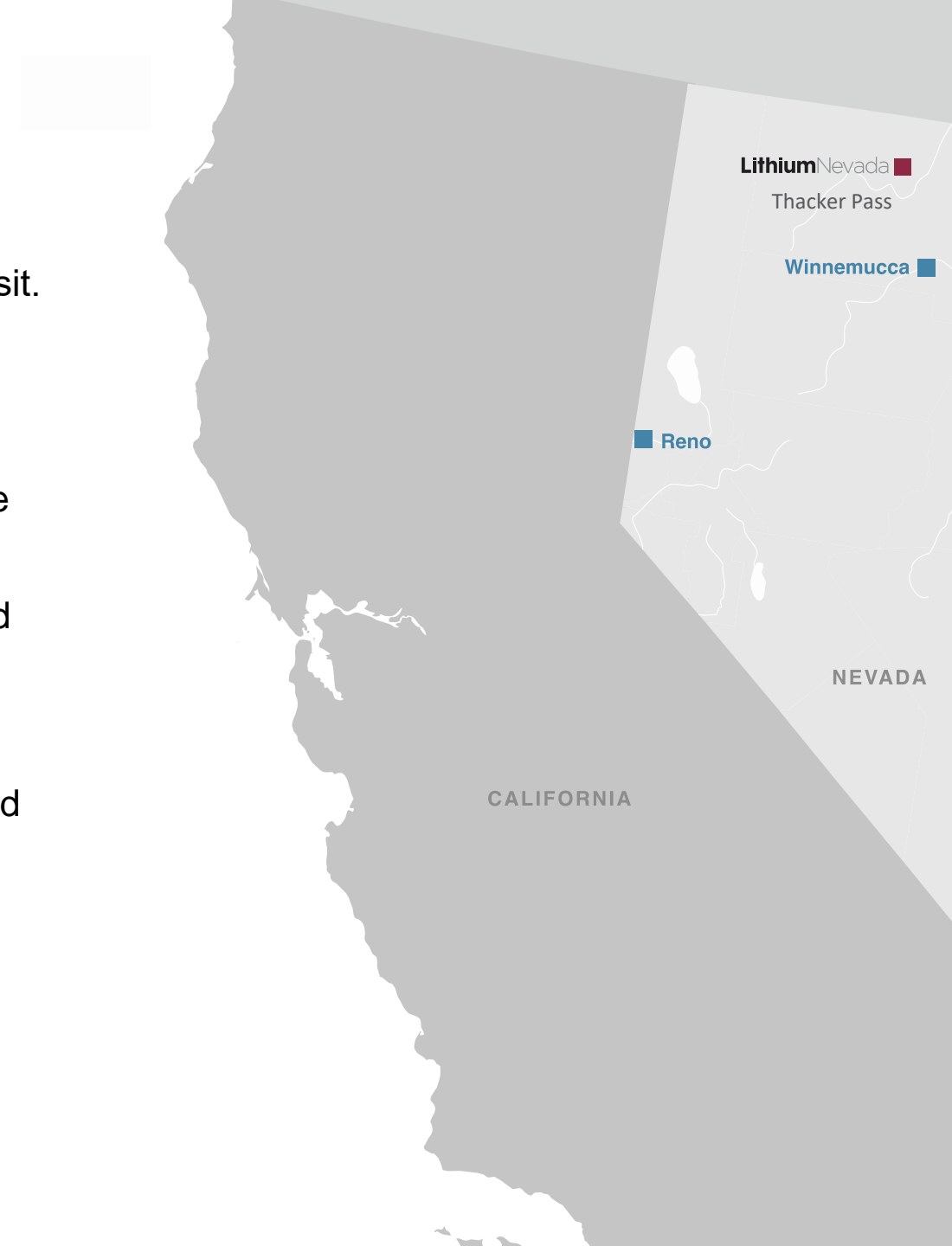
Forecasted Lithium Demand



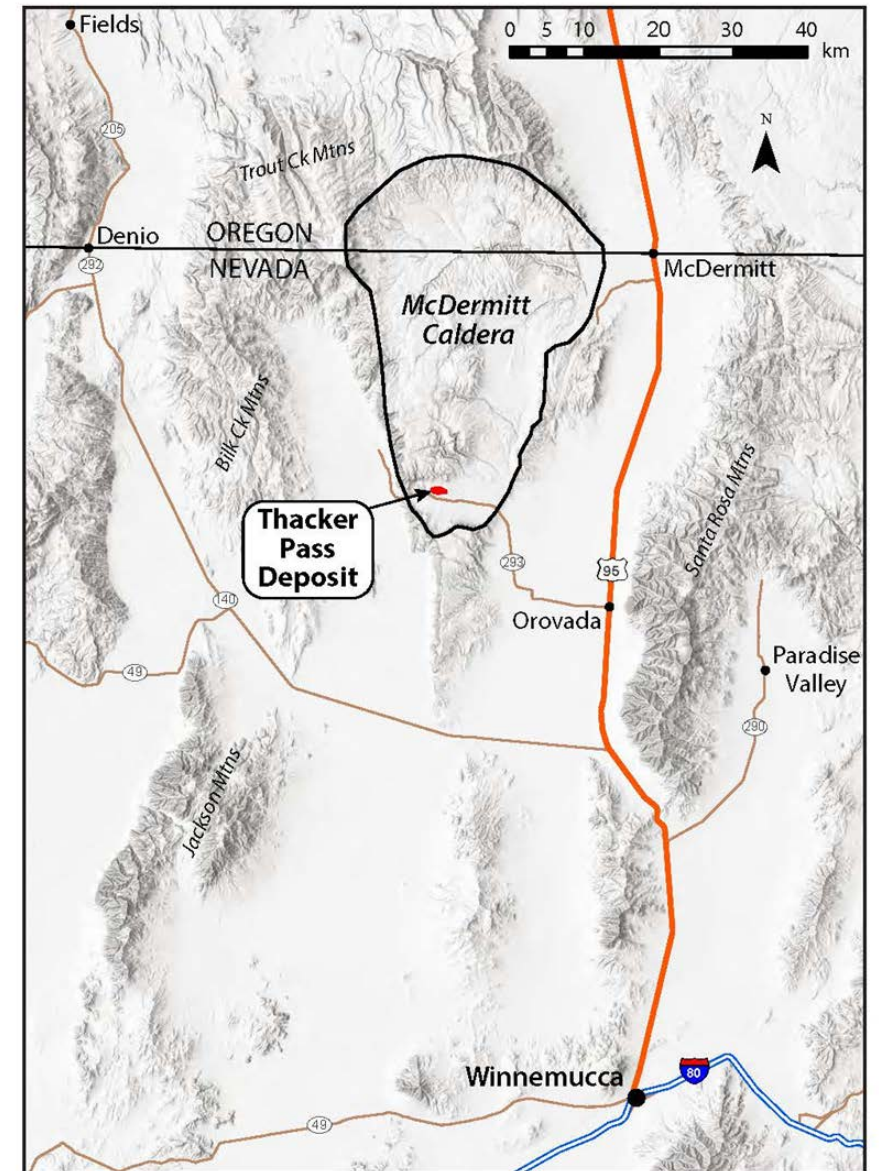
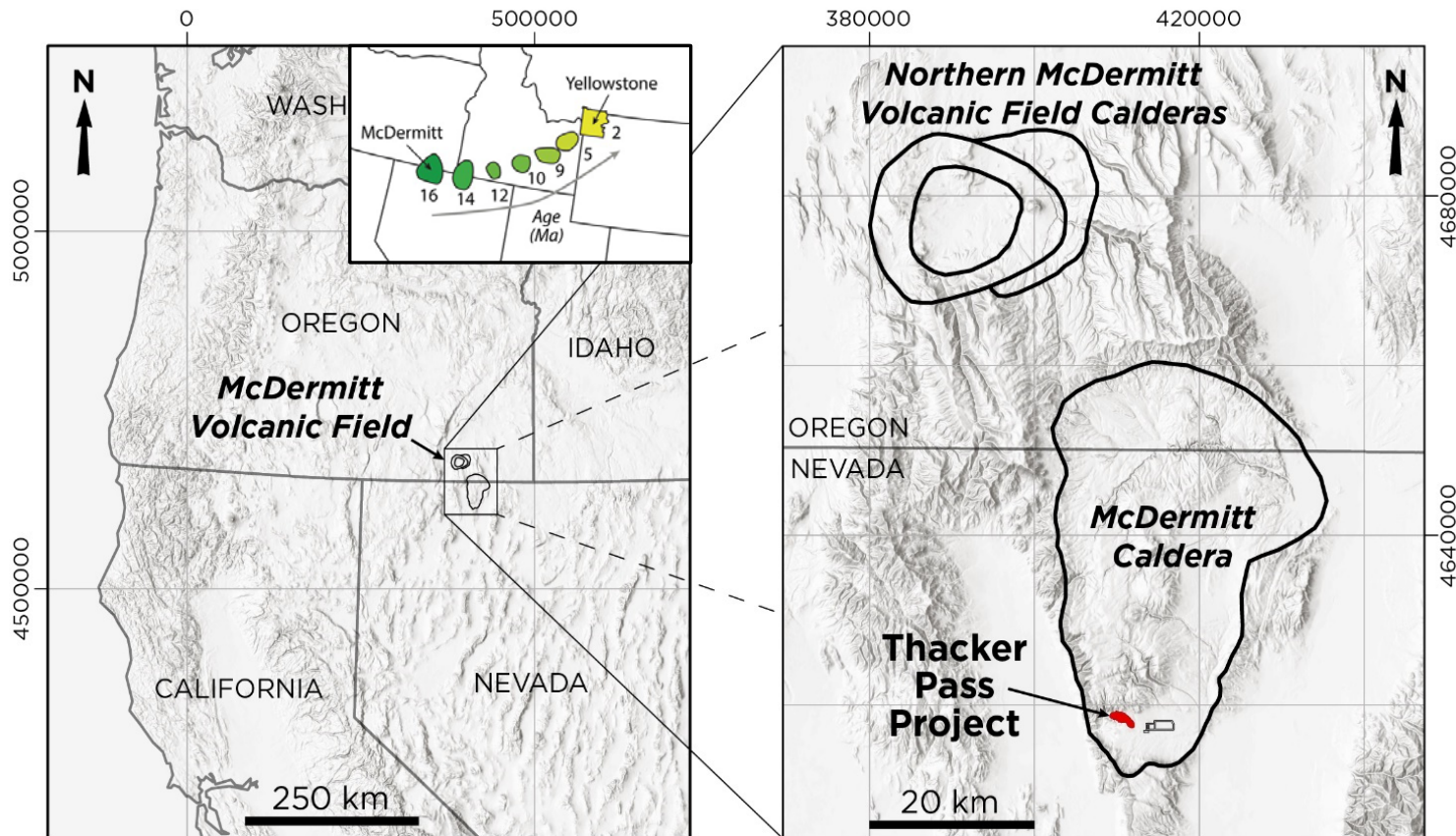


# Lithium Nevada's Thacker Pass Project

- Lithium Nevada Corp., a wholly owned subsidiary of Lithium Americas Corp., legally controls 100% of the Thacker Pass deposit.
- 41-year mine life, open pit lithium mine
- Propose to develop the project in two phases (Phase 1 & 2)
- Propose to generate carbon free energy on-site, to be used in the process
- Production anticipated to equal most or all of U.S. lithium demand
- Propose to produce a variety of battery-grade lithium chemicals, principally lithium carbonate and lithium hydroxide
- Proposed Phase 1 construction 2021-2022, pending financing and permits
- Mining, Operation & Production forecasted late 2022-2065



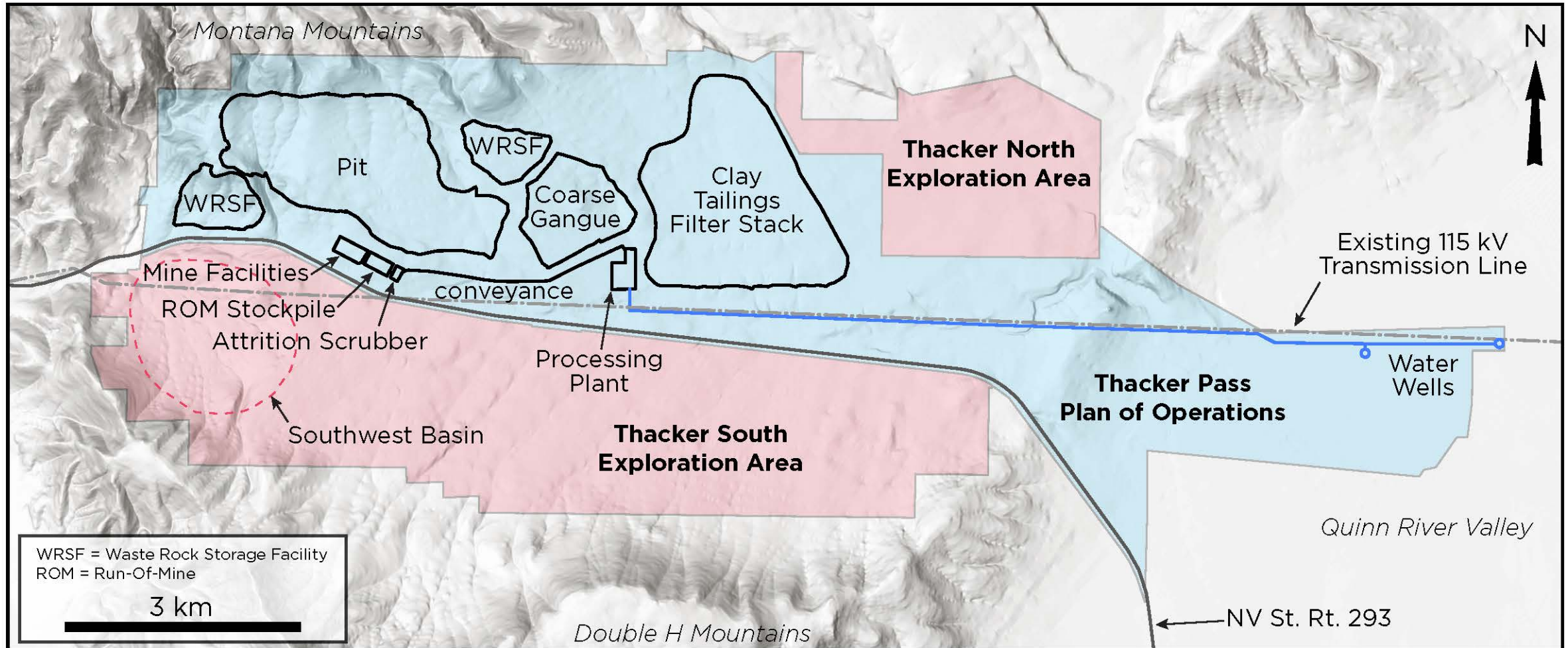
## Location and Geology





# Thacker Pass Project Plan of Operations

## Thacker North and South Exploration Project Plan of Operations



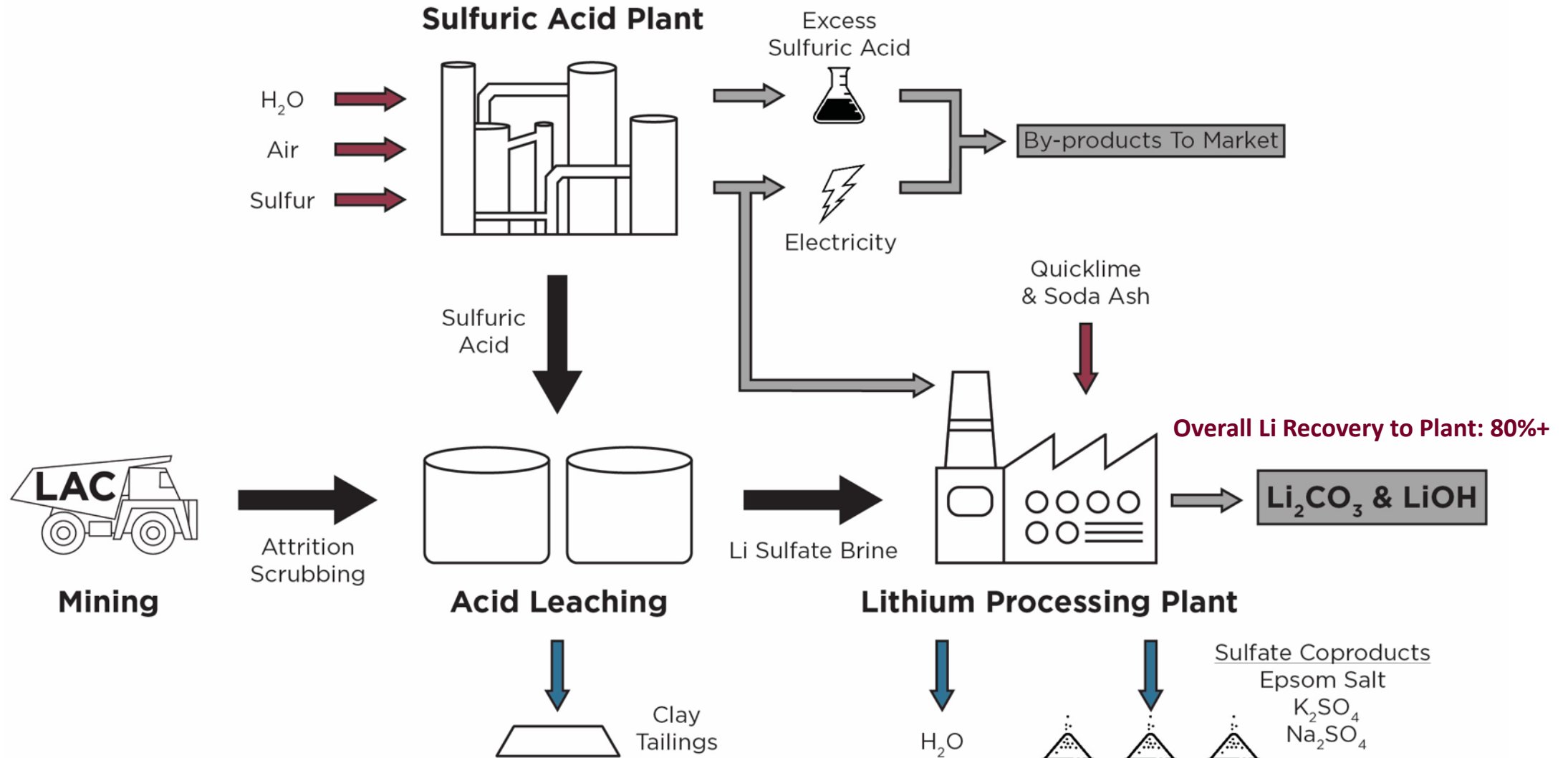
# Proposed Mining Methods

- Open pit mine using truck and shovel
- Trucks haul ore to attrition scrubber – very little blasting (~once a year) during operating phase
- Ore turned into slurry and gravity piped to plant
- Waste rock to be used in part as fill for plant site and as backfill in the pit (year 7 of mining)
- Low dewatering requirements (peak pit dewatering ~55 gpm towards end of mining)
- Concurrent reclamation scheduled to start in year 7





# THACKER PASS PROCESSING



# ENVIRONMENTAL STUDIES AND EVALUATIONS

**Lithium**Nevada

**9 Years Collecting  
Environmental, Land and  
Cultural Data**



**18,600 Acres surveyed for  
baseline environmental  
surveys**



**Studies and Modeling;  
Pre-NEPA engagement  
with agencies**



**Development of Draft and  
Final Plans of Operations**



## **WATER**

Hydrogeology Baseline Report  
Aquatic Resource Delineation Report  
Water Quantity Impacts Assessment  
Water Quality Impacts Assessment  
Baseline Geochemistry Report

## **WILDLIFE**

Wildlife Impact Assessment  
Bird & Bat Survey  
Eagle Conservation Plan  
Est. Great Basin Sagebrush Restoration Fund at UNR  
NV Sagebrush Ecosystem Technical Team Coordination

## **CULTURE / SOCIOECONOMICS**

Cultural Inventory  
Cultural Technical Report  
Cultural Treatment Plan  
Socioeconomic Assessment  
Engagement with Fort McDermitt Tribe

## **AIR**

Greenhouse Gas Emissions Report  
Air Emission Inventory  
Air Dispersion Model  
Dust Management Plan  
Volunteering to use Best Available Control Technologies  
Odor Analysis  
Class II Permit

## **LAND USE/RECLAMATION**

Soil & Growth Media Assessment  
Reclamation & Closure Plan  
Tailings Technical Stability Report  
Pit Wall Geotechnical Report  
Vegetation & Weed Report



## SOME ENVIRONMENTAL FEATURES OF THE PROJECT

### Energy

- Sulfuric acid plant can replace power from the grid with carbon-free energy

### Water consumption and recycling

- Phase 1 water consumption ~2600 acre feet/year; anticipated to double in Phase 2
- Recycling of process water

### Reduced Footprint using filter stack tailings

- Filtered tailings are proposed to be stored on a synthetic liner
- The tailings facility is not a water-retaining structure

### Reclamation

- Growth media is proposed to be stockpiled, then applied to facilities and re-seeded during operations.

### Great Basin Sagebrush Habitat Restoration fund

- Established fund with the University of Nevada foundation to improve the efficacy of sagebrush habitat reclamation



---

# LithiumNevada

A **Lithium**Americas Company

## CONTACT INFORMATION

Reno Office  
3685 Lakeside Drive  
Reno, Nevada 89509  
775-827-3318

Winnemucca Office  
91 Melarkey St. #3  
Winnemucca, Nevada 89445  
775-386-8185

**[www.lithiumamericas.com](http://www.lithiumamericas.com)**

---







# Thacker Pass Draft Environmental Impact Statement Public Meeting Parts 3 & 4 – Andrew Newman (ICF)

---

## Topics:

- 1) Alternatives to the Proposed Action
- 2) Comparison of Alternatives and Effects
- 3) Format of the Draft EIS
- 4) Where to find information in the Draft EIS



# Alternatives to the Proposed Action

---

Alternative A – Proposed Action

Alternative B – Partial Pit Backfill Alternative

Alternative C – No Pit Backfill Alternative

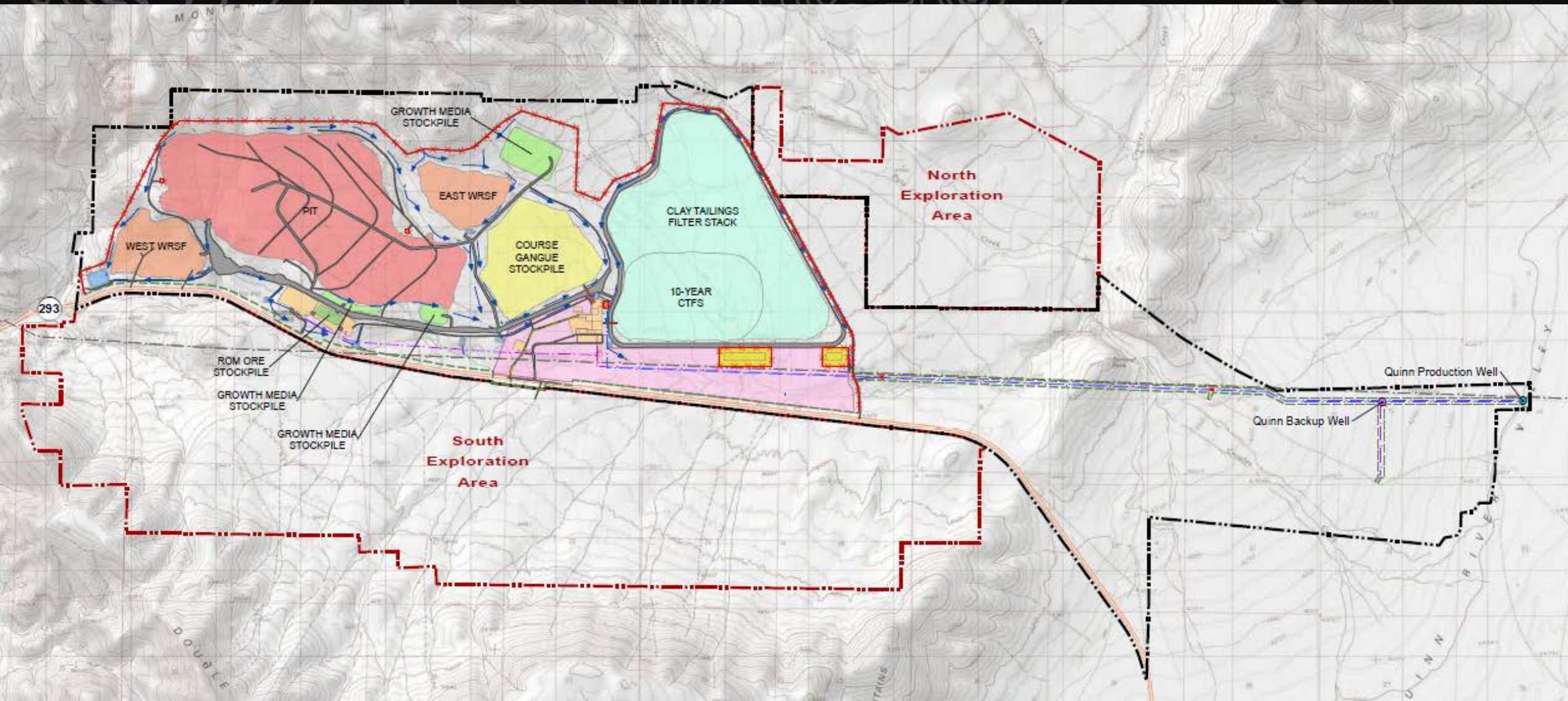
Alternative D – No Action Alternative



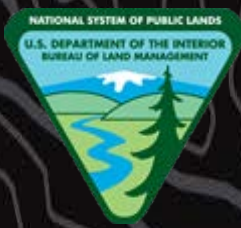
# Proposed Action (Alternative A)

	Description
Mine Facilities	Open pit lithium mine and processing facilities
Location	Thacker Pass basin; approximately 20 miles west-northwest of Orovada, NV
Life-of Mine	41 years
Project Phases	Phase 1: Construction of mine facilities and mining and processing for first 4 years (years 1-4) Phase 2: Continued mining, exploration, and operation of facilities (years 4-41) Post-Production: Mine closure and reclamation (minimum 5 years, years 41 – 46)
Project Area	18,008 acres (Mine Plan area = 10,468 acres; Exploration Plan = 7,540 acres)
Surface Disturbance	5,695 acres
Land Ownership	BLM-administered lands (no private or state lands in Project area)
Material End-Products	lithium carbonate, lithium sulfide, lithium hydroxide monohydrate, lithium metal, solid-state lithium batteries, conventional lithium-based batteries, and/or battery components as primary products and sodium hypochlorite solution
Work Force	Phase 1: approximately 1,000 construction and 183 operations personnel Phase 2: approximately 313 operations personnel
Operating Schedule	24-hours/day, 365 days/year

# Proposed Action (Alternative A)







# Proposed Action (Alternative A) Golden Eagle Permitting

---

USFWS is considering a permit application for disturbance to, and loss of annual productivity from, one Golden Eagle breeding pair for a period of up to five years.

In responding to the request for a permit, the USFWS must ensure compliance with the Eagle Act and the goal of maintaining stable or increasing breeding populations of Bald and Golden Eagles. The USFWS will consider issuance of an eagle disturbance take permit if:

- (1) the incidental take is necessary to protect legitimate interests;
- (2) the take is compatible with the preservation standard of the Eagle Act;
- (3) the applicant has avoided and minimized impacts to eagles to the extent practicable; and
- (4) compensatory mitigation will be provided for any take.

Under Alternative A, disturbance take (i.e., no reproduction) would be authorized within one golden eagle territory, resulting in the estimated loss of 0.59 golden eagles per year for up to five years. Mitigation to offset impacts to golden eagles would occur through retrofitting electric utility poles to prevent eagle deaths by electrocution.

# Alternative B (Partial Pit Backfill)

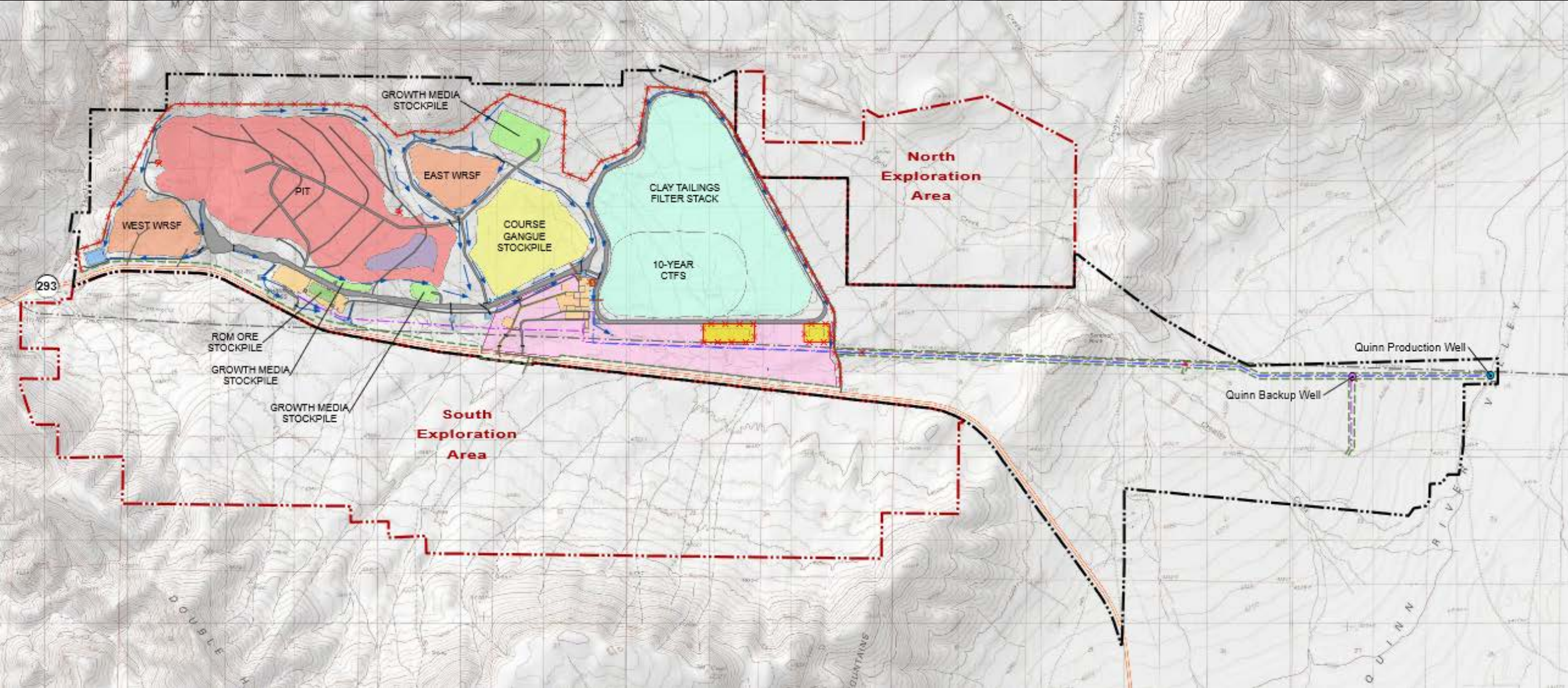
---

Alternative B would be the same as Alternative A (Proposed Action) with some of the following exceptions:

- 1) Southern portion of pit partially backfilled to an elevation of approximately 4,709 feet;
- 2) Ephemeral wetland established in southeastern portion of pit with seasonal ponding of water, acting as a hydrologic sink;
- 3) Backfilled material in pit recontoured during reclamation to blend with surrounding topography;
- 4) Excess waste material from open pit redistributed in other portions of the backfilled pit;
- 5) Sufficient growth media would be available to reclaim all facilities (6,830,000 CY).



# Alternative B (Partial Pit Backfill)





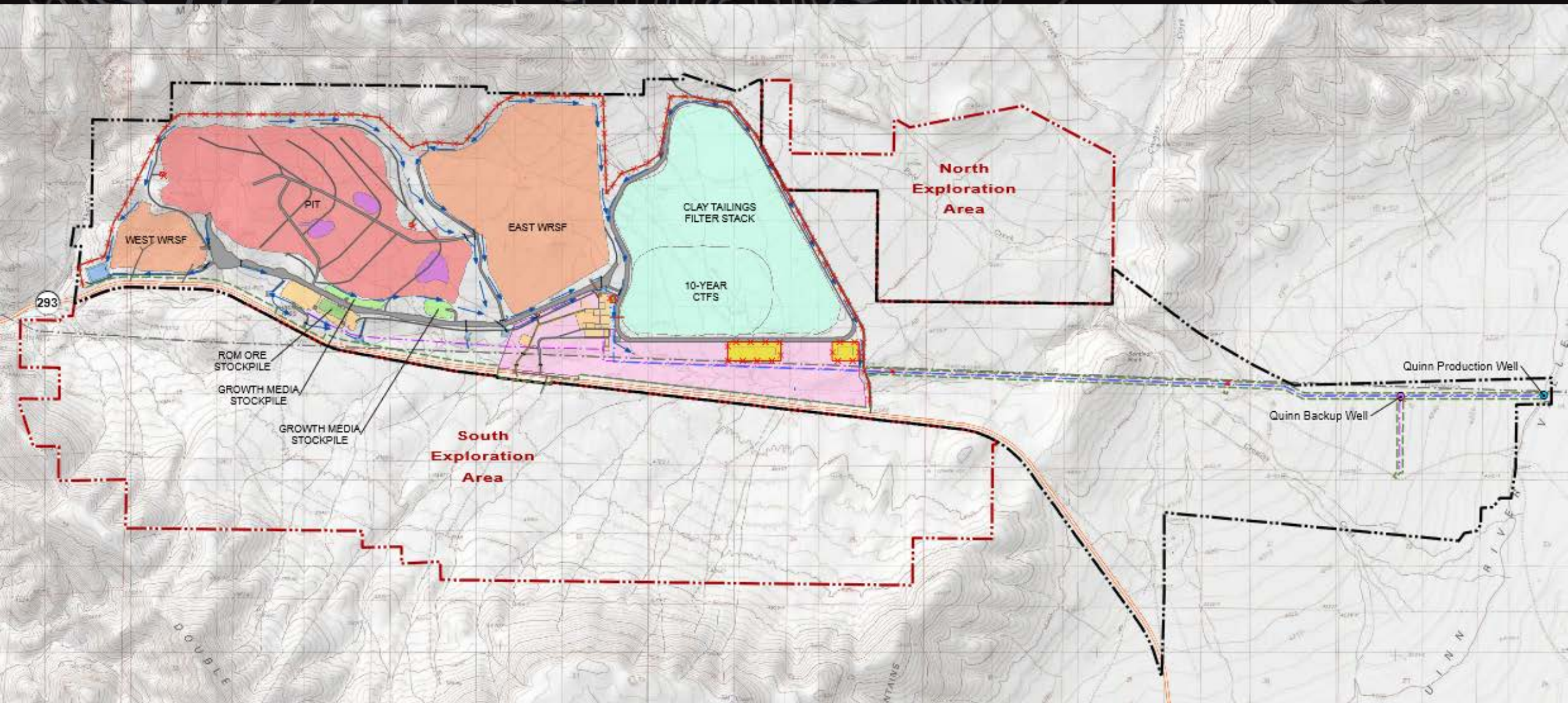
# Alternative C (No Pit Backfill)

Alternative C would be the same as Alternative A (Proposed Action) with some of the following exceptions:

- 1) Pit not backfilled after mining operations are complete;
- 2) Additional 482 acres of surface disturbance;
- 3) Approximately 267.1 million cubic yards of excess waste rock and coarse gangue placed in the East and West Waste Rock Storage Facilities (WRSF);
- 4) East WRSF would be built to a maximum elevation of 5,270 feet and a maximum height of 480 feet;
- 5) Expanded East WRSF would cover and eliminate a man-made livestock water feature (SP-059);
- 6) Three small perennial pit lakes would form;
- 7) Additional \$343.7 million for haulage of waste rock and coarse gangue material;
- 8) 4 additional haul trucks required for additional hauling of waste rock and coarse gangue material.
- 9) Mitigation to offset golden eagle take would occur through treating nests infested with nest parasites.



# Alternative C (No Pit Backfill)





# Alternative D (No Action Alternative)

---

Under Alternative D, the No Action Alternative, the BLM would not approve the proposed Plans for mining and exploration.

- 1) There would be no construction or operation of the Thacker Pass Mine on BLM-administered lands.
- 2) LNC would not implement the remaining authorized surface disturbance acreages under previous authorizations
- 3) Reclamation of existing disturbance would be completed according to the approved reclamation plan for those actions.
- 4) The USFWS would not issue an incidental take permit for eagles to LNC





U.S. Department of the Interior  
Bureau of Land Management

# Key Resources

Key resources and supplemental authorities identified for detailed analysis in this EIS through the scoping process include:

air resources and greenhouse gases  
cultural resources  
social and economic conditions  
environmental justice  
geology and minerals  
invasive plants  
lands and realty  
noise

range management  
soils  
transportation and access  
tribal concerns  
vegetation  
visual resources (including night skies)  
hazardous or solid wastes  
water quality and quantity (surface and ground  
wildlife (threatened and endangered, terrestrial and  
aquatic species, eagles and other migratory birds).

# Comparison of Alternatives (1/4)

Effect	Alternative A	Alternative B	Alternative C	Alternative D
Life of Mine	41	Same as A	Same as A	0
Mine Closure	5	Same as A	Same as A	0
Project Area	18,195 acres	Same as A	Same as A	0
Total Surface Disturbance	5,695 acres	Same as A	6,177 acres	194 acres
Water Use Rate	3,230 gpm	Same as A	11,305 gpm	No change
Dewatering Required	Yes (~55 gpm) at mine year 30	Same as A	Same as A	No change
Potential Pit Lake Development	No	Small intermittent ponding may develop in East Pit area	3 pit lakes anticipated to form	No change
Water Demand	Phase I – 2,600 afy Phase II – 5,200 afy	Same as A	Phase I – 9,100 afy Phase II – 18,200 afy	No change
Growth Media Required	8,363,379 cy	Same as A	>8,363,379 cy	130,00
Mining, Dust, and Vehicle Emissions	Phase I - 1.39 tpy Phase II – 2.34 tpy	Same as A	Same as A	No change



# Comparison of Alternatives (2/4)

Effect	Alternative A	Alternative B	Alternative C	Alternative D
Green House Gas Emissions	Phase I – 79,998 tpy Phase II – 132,588 tpy	Same as A	Phase I – 90,182 tpy Phase II – 142,772 tpy	No change
Disturbance to Historic/Prehistoric Sites	52 sites affected	Same as A	Same as A	No change
Groundwater Availability	2 drawdown areas. Maximum 10-ft drawdown area extends ~ 1.4 miles from Project area.	2 drawdown areas. Maximum 10-ft drawdown area extends ~ 4.8 miles from Project area.	2 drawdown areas. Maximum 10-ft drawdown area extends ~ 5.2 miles from Project area.	No affects anticipated
Groundwater Quality	Potential exceedance of NDEP Profile I standards for antimony, arsenic, sulfate, and TDS	Same as A	Potential exceedance of NDEP Profile I standards for antimony, arsenic, fluoride, manganese, molybdenum, sulfate, TDS	No effects anticipated
Seeps and Springs Flow	3 ephemeral springs affected within drawdown area	Same as A	5 ephemeral springs within drawdown area. One spring covered by East WRSF.	No effects anticipated

# Comparison of Alternatives (3/4)

Effect	Alternative A	Alternative B	Alternative C	Alternative D
Effects to Perennial Streams	~ 1% reduction in flows in Thacker, Pole and Crowley Creek.	~ 1% reduction in flows in Pole and Crowley Creek. ~4% reduction in flows in Thacker Creek.	~ 1% reduction in flows in Pole and Crowley Creek. ~7% reduction in flows in Thacker Creek.	No effects anticipated
Reduction of AUMs	500 AUMs removed	Same as A	Same as A	No effects anticipated
Unreclaimed Features	None	East Pit area would not be backfilled or reclaimed	1,099 acres of open pit would not be backfilled or reclaimed	None
Traffic Generation	Phase 1 - ~60 to 100 Phase II - ~120 to 200 additional truck trips/day	Same as A	Same as A	No effects anticipated
GRSG Habitat (2015 ARMPA)	5,011 acres of PHMA, 545 acres of GHMA would be removed	Same as A	5,493 acres of PHMA, 545 acres of GHMA would be removed	No effects anticipated
GRSG Leks within One Mile	1	Same as A	Same as A	None
Special Status Species Habitat	3,561 acres of Pygmy Rabbit habitat; 5,695 acres of Burrowing Owl habitat	Same as A	4,063 acres of Pygmy Rabbit habitat; 6,177 acres of Burrowing Owl habitat	No effects anticipated



# Comparison of Alternatives (4/4)

Effect	Alternative A	Alternative B	Alternative C	Alternative D
Big Game Habitat	753 acres of Bighorn Sheep habitat; 852 acres of Mule Deer habitat; 427 acres of pronghorn year-round habitat and 4,960 acres of winter range	Same as A	798 acres of Bighorn Sheep habitat; 897 acres of Mule Deer habitat; 501 acres of pronghorn year-round habitat and 5,013 acres of winter range	No effects anticipated
Golden Eagle Territories	1 territory affected – mitigation by power pole retrofits	Same as A	Same as A – but mitigation by treating nests	No effects anticipated
Migratory Bird Habitat	5,695 acres would be removed	Same as A	6,177 acres would be removed	No effects anticipated
Contrasting Visual Elements	Project features would be visible from KOPs 1,2,3,6, and 7	Same as A	Same as A, with the exception of increase contrasts and length of effects at KOP 7 due to remaining unbackfilled pit as a post-mining feature	No effects anticipated
Night Skies	Fixed and mobile lighting would affect night skies. Lighting would follow dark sky principles	Same as A	Same as A	No effects anticipated



# Draft EIS Format Overview

---

## Highlights:

- Main body of the Draft EIS – Chapters 1 – 6
- Appendices A through Q
- Issues Based Analysis
- DOI Streamlining Guidance





# Draft EIS Format Overview

---

## Draft EIS Content

- Chapter 1
  - Introduction
  - Purpose and Need
  - Decisions to be Made (BLM and USFWS)
  - Land Use Conformance
  - Site History



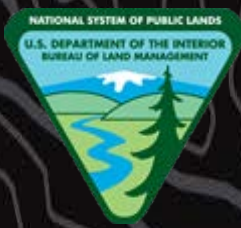
# Draft EIS Format Overview

---

## Draft EIS Content

- Chapter 2
  - Proposed Action (Section 2.2)
  - Alternatives to the Proposed Action (Sections 2.3 - 2.5)
  - Comparison of Alternatives (Section 2.6)
  - Alternatives Considered but Eliminated (Section 2.7)
  - Preferred Alternative (Section 2.8)





# Draft EIS Format Overview

---

## Draft EIS Content

- Chapter 3
  - Affected Environment
    - Appendix G includes detailed resource information
    - Appendix L includes study areas and analysis assumptions
  - Supplemental Authorities
  - Additional Affected Resources



# Draft EIS Format Overview

## Draft EIS Content

- Chapter 4 Environmental Consequences
  - Introduction to the Issues
  - Effects Analysis by Resource

4.5	Wildlife and Special Status Species, including Migratory Birds.....	4-31
4.5.1	Issues – Ground Disturbance and Project Infrastructure.....	4-31
4.5.2	Issue – Noise.....	4-47
4.5.3	Issue – Water Quality and Quantity.....	4-50
4.5.4	Bald and Golden Eagles .....	4-52
4.5.5	Issue – Ground Disturbance and Project Infrastructure .....	4-53
4.5.6	Issue – Noise.....	4-55
4.5.7	Recommended Mitigation and Monitoring .....	4-57
4.5.8	Residual Effects .....	4-60





# Draft EIS – Issue Topics

**Table 4.1. Issues Identified for Evaluation**

Issue	Description
Air Emissions	Potential airborne emissions resulting from the proposed Project and alternatives. Emissions sources include mine site construction and operations equipment and vehicles, on-road transportation trucks and equipment that would transport material to and from the Project area, processing area equipment and machinery, and fugitive dust.
Project Infrastructure	Potential effects from Project infrastructure include visual, auditory, and other changes to the existing Project area. Project infrastructure includes mining facilities (open pit, WRSFs, CTFS, stockpiles, GMS, stormwater management structures, electrical powerlines and sub-stations, equipment maintenance shop), ore processing facilities (ore conveyance, attrition scrubber, chemical plant, and battery production facility), and support/ancillary facilities (administrative offices and staff facilities).
Ground Disturbance	Ground disturbance includes potential effects that would result from areas of active ground disturbance resulting from mine construction and operation as well as continued mineral exploration activity.
Noise	Noise effects include all noise generating sources from mine construction and operation in addition to continued mineral exploration activity.
Public Access	Effects to public access include modifications to existing public roads and rights-of-ways within the Project area and installation of mine fencing and berms to ensure public safety.



# Draft EIS - Issue Topics (continued)

Issue	Description
Public Safety	Public safety effects include mine related truck traffic within the mine site and adjacent areas, additional on-road mine related delivery trucks and vehicles, and sources of hazardous materials or chemicals.
Transportation	Effects to transportation include additional on-road mine related delivery trucks and vehicles, and sources of hazardous materials or chemicals in addition to vehicles transporting staff to and from the mine site.
Waste, Hazardous and Solid	Effects of wastes (Hazardous and Solid) include potential for unintended releases (spills) of hazardous or solid materials at the mine site or during transportation to and from the site. Storage of hazardous materials at the mine site is also evaluated.
Water Quality & Quantity	Potential effects to water quality and quantity include the potential for mine related groundwater aquifer drawdown, contamination of ground or surface water from unintended materials releases (spills) and the potential for adverse effects to groundwater resulting from surface water infiltration into the open pit or through above ground mine facilities (WRSF, CTFS, or other stockpiles). Water produced and used by the mine from the proposed production wells could also affect surface water stream flows in nearby perennial and intermittent streams or springs.
Bald and Golden Eagles	Potential effects to Bald and Golden Eagles are analyzed under a single section heading to assist USFWS evaluation of the applicant's application for an Eagle Take Permit under the Bald and Golden Eagle Protection Act (50 CFR 22).
Quality of Life and Non-Market Values	Quality of life and non-market values are analyzed under the Social and Economic Values section only.





# Draft EIS Format Overview

---

## Draft EIS Content

- Chapter 5
  - Cumulative Effects
    - Past and Present Actions
    - Reasonably Foreseeable Actions
    - Cumulative Resource Effects Analyses
- Chapter 6
  - Consultation and Coordination

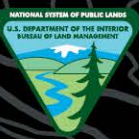


# Draft EIS Content

## LIST OF APPENDICES

Appendix A	Figures List
Appendix B	Mining Plan of Operations
Appendix C	Exploration Plan of Operations
Appendix D	Design Features
Appendix E	References
Appendix F	Acronyms and Abbreviations, Glossary, List of Preparers, Index
Appendix G	Resource Summaries (Affected Environment)
Appendix H	Wildlife Information
Appendix I	Soils Information
Appendix J	Cultural Resource Inventory Tables
Appendix K	Air Quality Information
Appendix L	Effects Analysis Methods and Assumptions
Appendix M	Visual Simulations
Appendix N	Project Consistency with 2015 and 2019 Greater Sage-Grouse Approved Resource Management Plan Amendments (GRSG ARMPA)
Appendix O	Regulatory Setting and Project Permits
Appendix P	Water Resources Information
Appendix Q	Golden Eagle Cumulative Effects Analysis





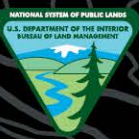
U.S. Department of the Interior  
Bureau of Land Management

State of Nevada  
Bureau of Land Management  
Winnemucca District  
Humboldt River Field Office

## Lithium Nevada Corporation, Thacker Pass Project

# How to View the Documents





## Lithium Nevada Corporation, Thacker Pass Project

**Via the BLM ePlanning website:**

<https://eplanning.blm.gov/eplanning-ui/project/1503166/510>

**View Hardcopies:**

**Winnemucca, Denio, and McDermitt Libraries (by appointment)**

- Due to current BLM COVID-19 policy, copies will not be available for viewing at the Winnemucca District office.

**Request a Copy:**

- Hardcopy of the DEIS with appendices on flash drive; or
- Electronic version of the DEIS and appendices on flash drive

**Project Lead Ken Loda:**

**E-mail: [blm\\_nv\\_wdo\\_thacker\\_pass@blm.gov](mailto:blm_nv_wdo_thacker_pass@blm.gov)**

**Phone: (775) 623-1500**

**Mail: 5100 East Winnemucca Blvd  
Winnemucca, NV 89445**





U.S. Department of the Interior  
Bureau of Land Management

State of Nevada  
Bureau of Land Management  
Winnemucca District  
Humboldt River Field Office

# How to Comment





U.S. Department of the Interior  
Bureau of Land Management

State of Nevada  
Bureau of Land Management  
Winnemucca District  
Humboldt River Field Office

# What comments will be addressed

## Substantive Comments

Question the:

- Adequacy of the environmental analysis

- Methodology for the environmental analysis

- Assumptions used for the environmental analysis

Provide new information relevant to the analysis

Causes changes or revisions in one or more of the Alternatives

Examples:

- The EIS says \_\_\_\_ which is not supported by \_\_\_\_

- New data from (*site the information*) is not included in the analysis

- The EIS is contradictory in section/page XX compared to section/page XX

*\*If your comment doesn't identify concerns in the EIS content it likely isn't substantive*





U.S. Department of the Interior  
Bureau of Land Management

State of Nevada  
Bureau of Land Management  
Winnemucca District  
Humboldt River Field Office

# What comments will not be addressed

## Non-Substantive Comments

In Favor or Against the proposal w/out reasoning

A vote

Don't like the analysis

Agree or disagree with policy

Don't pertain to the project or project area

Vague open-ended questions

## Examples:

I like/dislike the proposal

This isn't fair

What are you going to do about \_\_\_\_?

*\*If your comment doesn't identify concerns in the EIS content it likely isn't substantive*





U.S. Department of the Interior  
Bureau of Land Management

# Where to Comment

Official written comments may be submitted for the Project by the following methods:

1. Online through the BLM ePlanning website at <https://eplanning.blm.gov/eplanning-ui/project/1503166/530>
2. By email at [blm\\_nv\\_wdo\\_thacker\\_pass@blm.gov](mailto:blm_nv_wdo_thacker_pass@blm.gov) with "Thacker Pass EIS (Loda)" in the subject line
3. By fax at 775-623-1503, with "Thacker Pass EIS (Loda)" in the subject line
4. By regular mail to the address below:

Attn: Ken Loda  
Bureau of Land Management  
Winnemucca District  
5100 E. Winnemucca Blvd.  
Winnemucca, Nevada 89445





# Question Session

---

- 1) Where to find the info within the Draft Environmental Impact Statement and supporting documents?
- 2) How to submit formal comments and questions?



# Project Resources

ePlanning Website: <https://eplanning.blm.gov/eplanning-ui/project/1503166/530>

Email: [blm\\_nv\\_wdo\\_thacker\\_pass@blm.gov](mailto:blm_nv_wdo_thacker_pass@blm.gov)

Fax: 775-623-1503

Mailing Address: Attn: Thacker Pass  
Bureau of Land Management  
Winnemucca District  
5100 E. Winnemucca Blvd.  
Winnemucca, Nevada 89445

\*\*\*Should you have additional questions or need clarification after you have reviewed the DEIS documents, please use the email above or call 775-623-1500.