



U.S. Department of the Interior  
Bureau of Land Management

# Alabama Hills Virtual Public Meetings



July 22 and 23, 2020



# Welcome! Technical Overview

RingCentral Meetings Meeting ID: 149-816-4006


You are viewing Jack Hughes' screen

View Options ▾

- Zoom Ratio Fit to Window >
- ✓ Side-by-side Mode

For best view, select Side-by-side Mode

## Alabama Hills Virtual Public Meetings



Chat Q&A

July 22 and 23, 2020

Audio Settings ^

Chat Raise Hand Q&A

Jack Hughes

Leave Meeting

For technical questions, send a chat to the Panelists or call/ text Jack Hughes at 619.686.7411



# Meeting Schedule

Time	Topic
2:00 pm	Meeting logistics, welcome and introductions
2:20 pm	Overview of planning process and environmental assessment
2:35 pm	Question and answer period
2:45 pm	Overview of alternatives
3:10 pm	Question and answer period
3:50 pm	Closing and next steps



***This meeting is being recorded and will be shared after the meeting on ePlanning***



# Webinar Ground Rules

- Use the chat box for technical help and information.
- If you would like to ask a question;
  - **Please use the Q&A button at the bottom of the screen.**
  - Or, click on the “**Raise Hand**” button. The facilitator will **call on you** when it is your turn to speak and will unmute your line.
  - Ask **one question** at a time.
  - If you are on **the phone**, you can email your question to [BLM\\_CA\\_Web\\_BI@blm.gov](mailto:BLM_CA_Web_BI@blm.gov) and it will be read by the facilitators.
- Be **respectful**. Threatening, profane or other inappropriate language will not be permitted. Disruptive participants will be removed from the webinar.
- If you are having a technical problem, please message via **chat** or call Jack Hughes at 619.686.7411.

**Reminder** - Public comments on the preliminary EA will **not be accepted** on this webinar, but staff are happy to answer questions. Visit ePlanning to provide comments.



U.S. Department of the Interior  
Bureau of Land Management

# Welcome





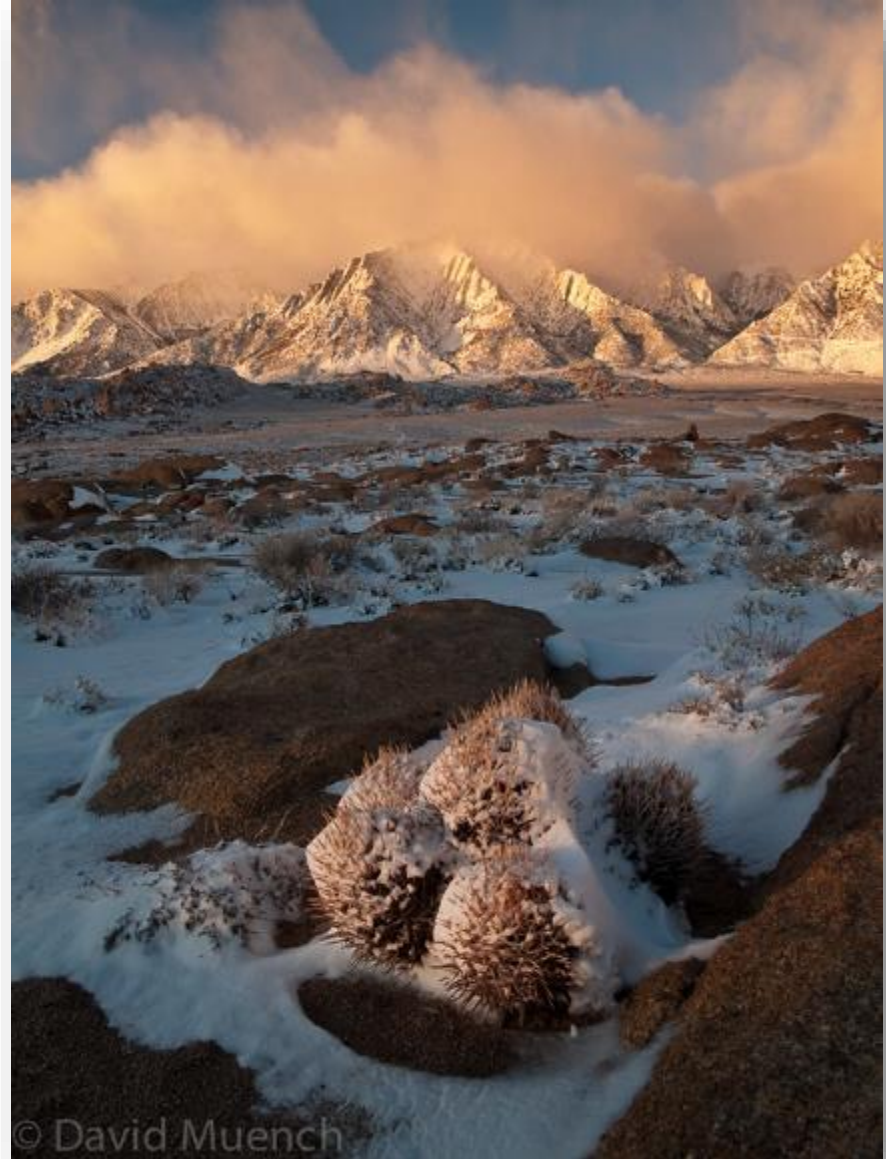
# Meeting Goals

- Explain organization and content of the environmental assessment
- Provide overview of the proposed management actions and alternatives
- Describe next steps and how best to engage in the planning process

## Poll 1:

How did you hear about this meeting?

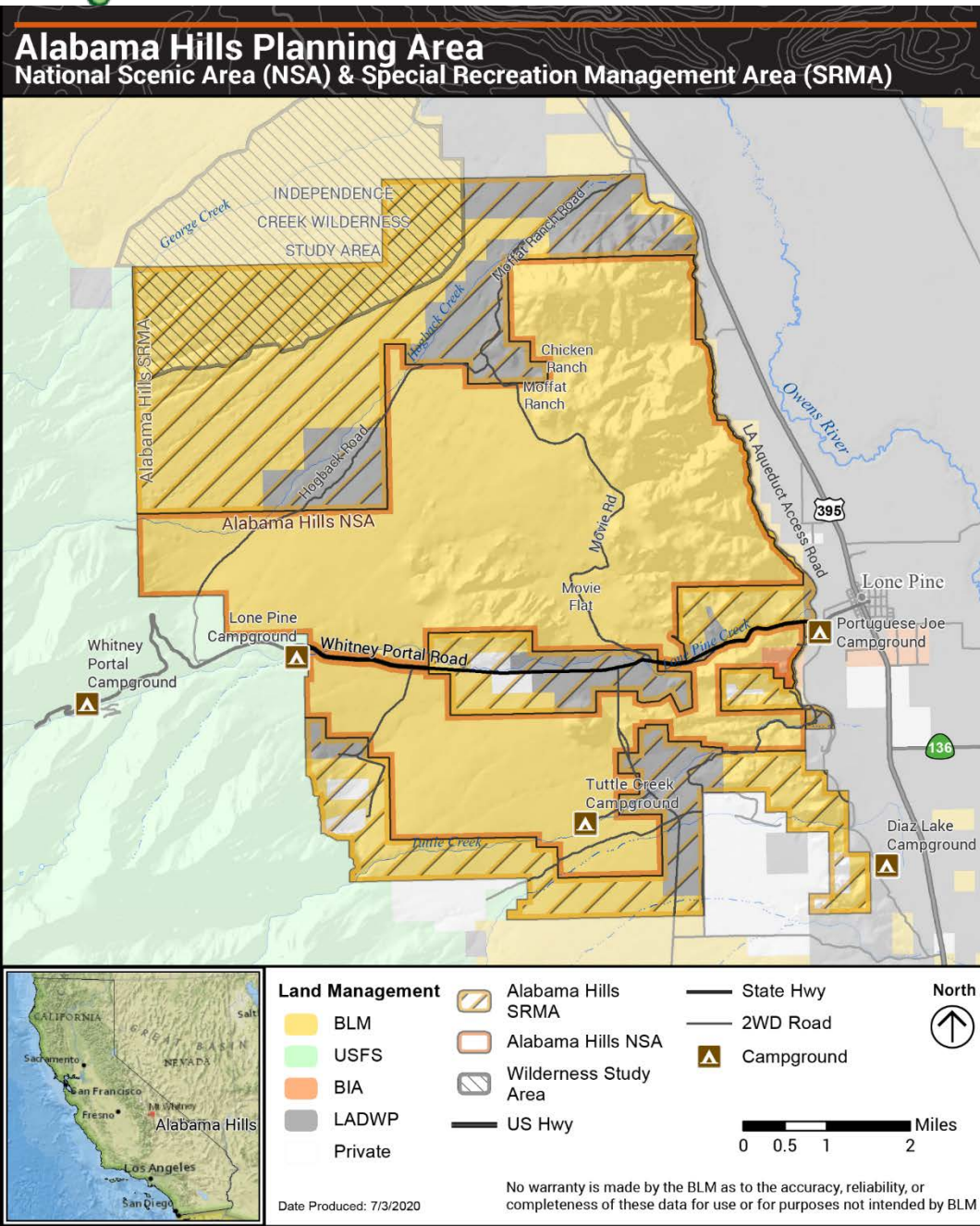
*Answer in the poll or in chat!*





# Document Overview

Section	Contents
Chapter 1	<ul style="list-style-type: none"><li>• Background information</li><li>• What area is covered in the environmental assessment</li><li>• Why is an environmental assessment needed</li><li>• What will be addressed in the environmental assessment</li><li>• What will not be addressed in the environmental assessment</li></ul>
Chapter 2	<ul style="list-style-type: none"><li>• Description of the alternatives by resource</li><li>• Actions that will not be considered</li></ul>
Chapter 3	<ul style="list-style-type: none"><li>• Description of the current condition</li><li>• Potential effects of the alternatives by resource</li></ul>
Chapter 4	<ul style="list-style-type: none"><li>• Consultation and coordination</li></ul>
Appendices	<ul style="list-style-type: none"><li>• Appendix A: Alabama Hills Stewardship Group Vision Statement</li><li>• Appendix B: Management Direction and Actions Established by Law</li><li>• Appendix C: Alabama Hills National Scenic Area Features and Values</li><li>• Appendix D: Project Design Features and Stipulations</li><li>• Appendix E: Recreation Characteristics Setting Matrix</li><li>• Appendix F: Glossary and Acronyms</li><li>• Appendix G: References</li></ul>
Maps	Maps of the alternatives



- **National Scenic Area (NSA): ~18,745 acres**
- **Special Recreation Management Area (SRMA): ~10,520 acres**





# Why a Management Plan?

- Increase in visitation
- Bishop Resource Management Plan (RMP), 1993, as amended
- Dingell Act, March 2019
- Required by National Conservation Lands Policy
- To provide comprehensive management direction with specific strategies and actions to provide for the long-term conservation, protection and enhancement of the planning area





# Management Plan Objectives

## National Scenic Area

Conserve, protect, and enhance for the benefit, use, and enjoyment of present and future generations the area's nationally significant scenic, cultural, geological, educational, biological, historical, recreational, cinematographic, and scientific resources

## Special Recreation Management Area

Protect the area's unique geologic and cultural features and scenic values and to provide compatible recreational opportunities





# Scoping and Consultation

- **March 2019:** Planning for the future workshop
- **November 2019:** Pop-up workshops
- **November - December 2019:** Public scoping period and workshops
- **January 2020:** Internal scoping
- **July 8 - August 7, 2020:** Public review period
- **Ongoing Consultation:**
  - Alabama Hills Stewardship Group
  - Lone Pine Paiute-Shoshone Tribe
  - Inyo County
  - Los Angeles Department of Water and Power
  - Southern California Edison
  - California Department of Fish and Wildlife





# Alternatives (No Preferred)

- **No Action:**
  - Continue current management strategies.
- **Alternative 1:**
  - Recreation uses would be managed with minimal development
  - Focus on balancing recreational and non-recreational resources and values.
- **Alternative 2:**
  - Recreation uses would be intensively managed in a more developed setting
  - Increase emphasis on non-recreational resources and values.



# All Alternatives

- Project design features
- Monitoring and adaptive management
- Ready for implementation unless otherwise noted
- *Approved Management Plan may be a combination of actions from any alternative*





# What will be in the Management Plan?

## Decisions that will be made:

1. Implement one of the proposed alternatives;
2. Implement one of the proposed alternatives with modifications and/or mitigation;
3. Take no action and continue current management;
4. Implement a preferred alternative comprised of components of each of the alternatives considered.

## Decisions that will not be made:

- Require a land use plan amendment
- Do not conform to policy or law
- Outside of BLM authority





# Welcome! Technical Overview

RingCentral Meetings Meeting ID: 149-816-4006


You are viewing Jack Hughes' screen

View Options ▾

- Zoom Ratio Fit to Window >
- ✓ Side-by-side Mode

For best view, select Side-by-side Mode

## Alabama Hills Virtual Public Meetings



Chat Q&A

July 22 and 23, 2020

Audio Settings ^

Chat Raise Hand Q&A

Jack Hughes

Leave Meeting

For technical questions, send a chat to the Panelists or call/ text Jack Hughes at 619.686.7411



# Question & Answer #1 (10 minutes)

## To ask a question:

- Click the Q&A button at the bottom of the screen and type in your question.
- Or, click the “**Raise Hand**” button.
- The facilitator will **call on you** when it is your turn to speak and will unmute your line.
- Ask **one question** at a time.
- If you are on **the phone**, you can email your question to [BLM\\_CA\\_Web\\_BI@blm.gov](mailto:BLM_CA_Web_BI@blm.gov) and it will be read by the facilitators.
- Be **respectful**. Threatening, profane or other inappropriate language will not be permitted. Disruptive participants will be removed from the webinar.

- *Reminder - Public comments will not be accepted during this webinar, but staff are happy to answer questions.*
- To comment on the EA, visit the Alabama Hills page on ePlanning

*This meeting is being recorded and will be shared after the meeting on ePlanning*



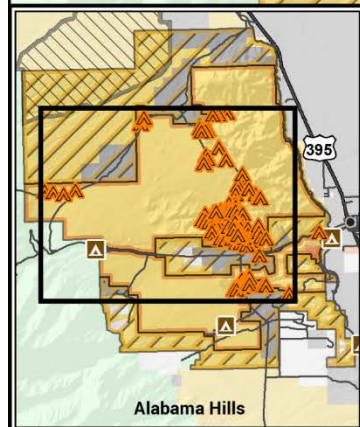
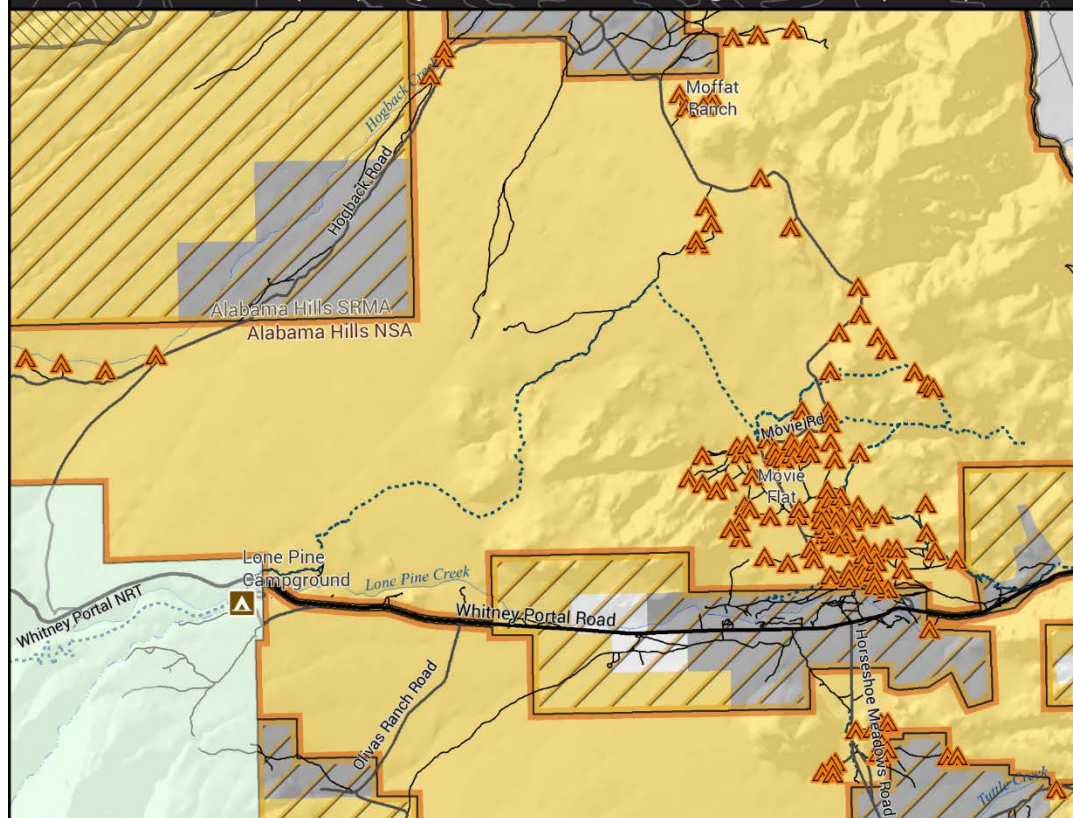
# Recreation: Overnight Use

No Action (pg. 10)	Alternative 1 (pgs. 10-12)	Alternative 2 (pg. 12)
Dispersed camping allowed: 126 sites and over 200 campfire rings.	Establish up to 65 designated dispersed campsites with fire rings.	Prohibit dispersed camping.
14-day dispersed camping limit per year.	7-day limit per 28-day period; 14-day limit per year.	No dispersed camping.
No dispersed camping permit required.	Require free permit for dispersed camping. Consider a fee.	No dispersed camping.
83 sites at Tuttle Creek Campground.	<ul style="list-style-type: none"><li>• Add shade structures, wildlife proof food lockers, equestrian and group sites at Tuttle Creek.</li><li>• Expand Tuttle Creek Campground if needed to meet demand.</li></ul>	<ul style="list-style-type: none"><li>• Construct new campground in NE portion of the SRMA with at least 2 equestrian sites.</li><li>• Require fee and permit at new campground.</li></ul>



# No Action: Overnight Use

## Alabama Hills Planning Area National Scenic Area (NSA) & Special Recreation Management Area (SRMA)



### No Action Alternative - Dispersed Campsite Inventory

Land Management	
BLM	BIA
USFS	LADWP
Private	Alabama Hills SRMA
Alabama Hills NSA	Wilderness Study Area

Campground
2WD
4WD Low Clearance
Trail
Current Dispersed Campsite Inventory

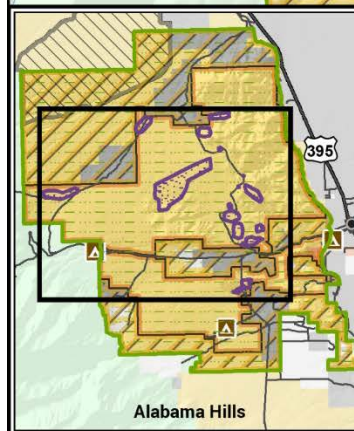
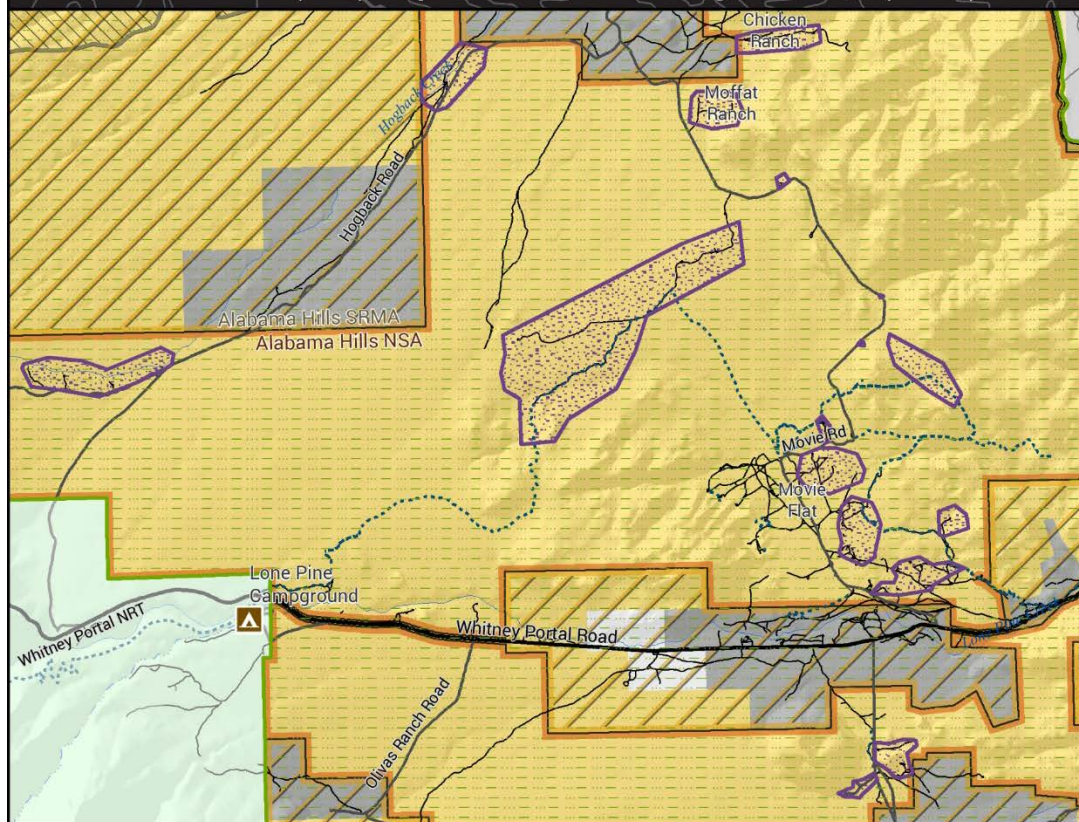


Miles  
0 0.2 0.4 0.8



# Alternative 1: Overnight Use

## Alabama Hills Planning Area National Scenic Area (NSA) & Special Recreation Management Area (SRMA)



### Alternative 1 - Proposed Designated Dispersed Camping

Land Management		Campground
BLM	2WD	
USFS	4WD Low Clearance	
BIA	Trail	
LADWP		
Private		Designated Dispersed Camping
Alabama Hills SRMA		Day Use Only
Alabama Hills NSA		
Wilderness Study Area		



0 0.2 0.4 0.8  
Miles

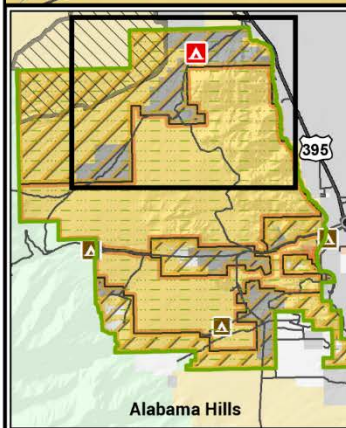
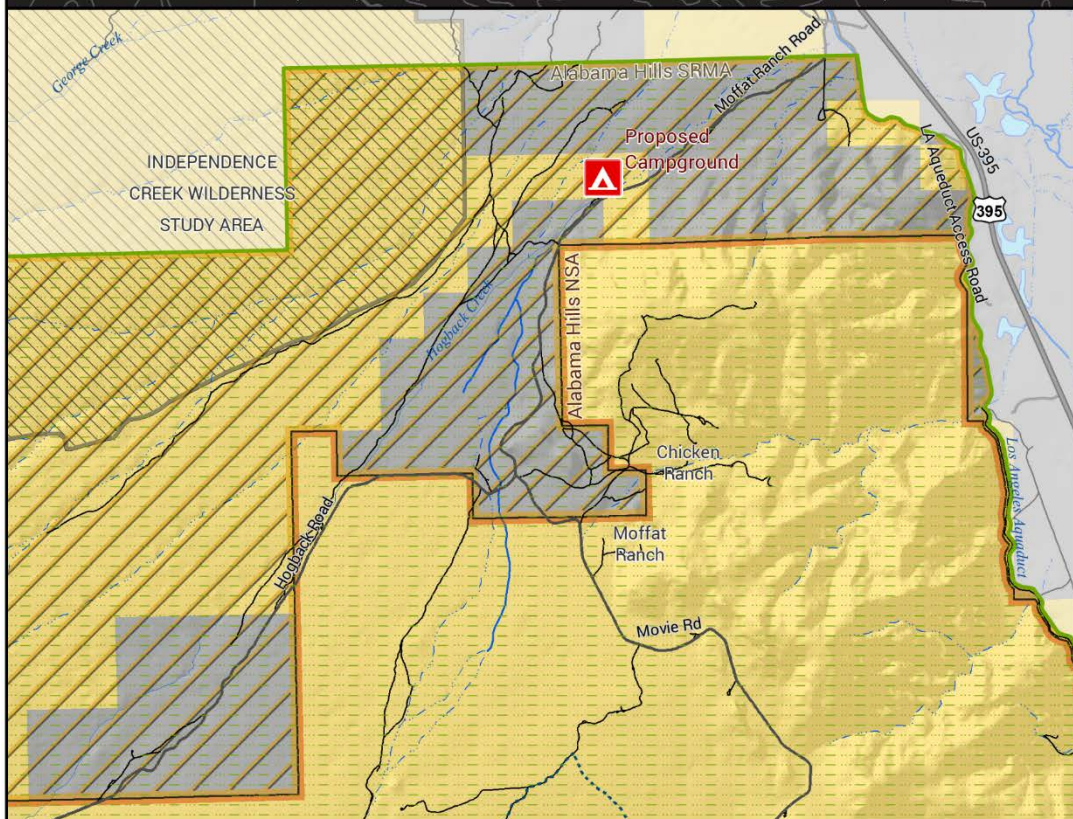
Date Produced: 7/3/2020

No warranty is made by the BLM as to the accuracy, reliability, or completeness of these data for use or for purposes not intended by BLM



# Alternative 2: Overnight Use

## Alabama Hills Planning Area National Scenic Area (NSA) & Special Recreation Management Area (SRMA)



### Alternative 2 - Proposed Campground

Land Management	
BLM	Campground
USFS	2WD
BIA	4WD Low Clearance
LADWP	Alternative 2 - Proposed Campground
Private	Day Use Only
Alabama Hills SRMA	
Alabama Hills NSA	
Wilderness Study Area	

Date Produced: 7/3/2020

No warranty is made by the BLM as to the accuracy, reliability, or completeness of these data for use or for purposes not intended by BLM



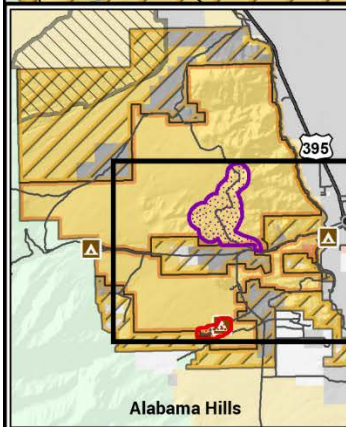
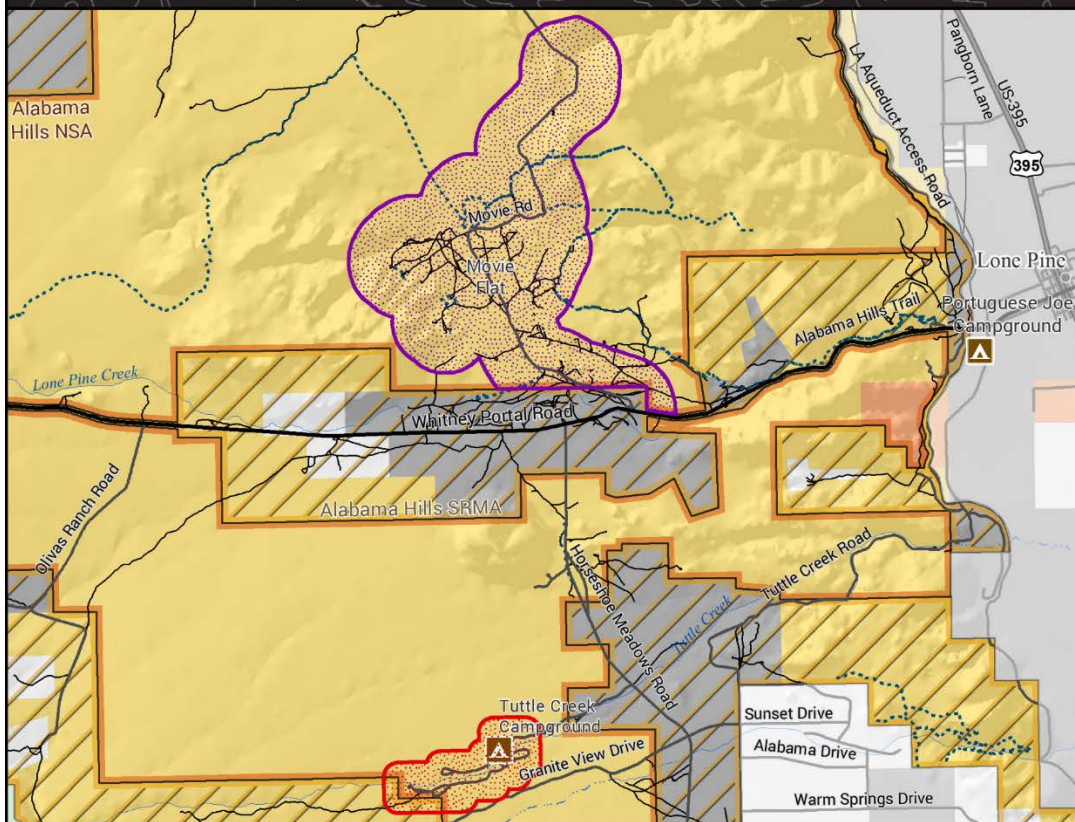
# Recreation: Day Use

No Action (pgs. 12-13)	Alternative 1 (pg. 13)	Alternative 2 (pg. 14)
Bolts are replaced and routes developed at individual's discretion.	<ul style="list-style-type: none"><li>• Allow bolt replacement matching rock color.</li><li>• Require permit for new climbing routes.</li></ul>	<ul style="list-style-type: none"><li>• Require permit for bolt replacement.</li><li>• Prohibit new route development.</li></ul>
Drones allowed.	Require permit for drone landing and take-off in NSA.	Same as Alternative 1.
No shooting in developed areas and follow State law.	Prohibit shooting in the Movie Flat area.	Same as Alternative 1.
No permit required for day use.	Same as No Action.	Require free permit for all visitors. Consider fee-based permit.



# Alternatives 1 and 2: Shooting

## Alabama Hills Planning Area National Scenic Area (NSA) & Special Recreation Management Area (SRMA)



### No Action & Action Alternative 1 - Proposed No Shooting Area

#### Land Management

- BLM
- USFS
- BIA
- LADWP
- Private
- Alabama Hills SRMA
- Alabama Hills NSA
- Wilderness Study Area

- Campground
- 2WD
- 4WD Low Clearance
- Trail

- No Action
- Alternative - Existing No Shooting Area

- Alternative 1 - No Shooting Area



0 0.2 0.4 0.8 Miles



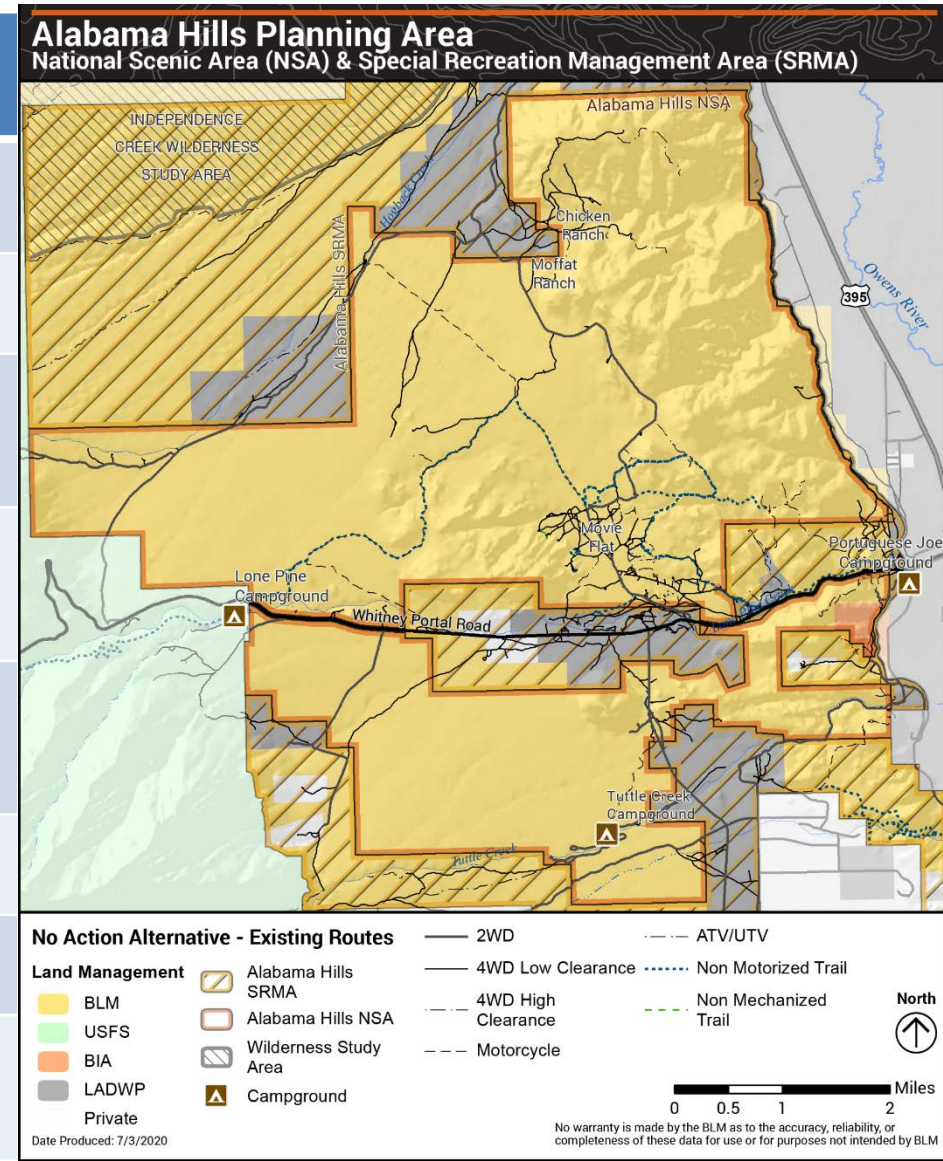
# Roads, Routes & Trails

<b>No Action (pg. 14)</b>	<b>Alternative 1 (pg. 15)</b>	<b>Alternative 2 (pg. 16)</b>
<p>97 miles of BLM roads, routes and trails; 170 within planning area.</p> <ul style="list-style-type: none"><li>• Vehicle use is limited to roads, routes and trails.</li><li>• Vehicle type for ATV, motorcycle, non-motorized routes are signed.</li></ul>	<p>95 miles of BLM roads, routes and trails; 168 within planning area.</p> <p>Same as No Action.</p>	<p>95 miles of BLM roads, routes and trails; 168 within planning area.</p> <ul style="list-style-type: none"><li>• Close all roads except county roads in NSA to RVs and trailers.</li><li>• Convert all non-motorized routes to non-mechanized.</li></ul>
<p>E-bikes allowed on all routes.</p>	<p>Allow only Class 1 e-bikes on non-motorized routes and all classes on motorized.</p>	<p>Allow e-bikes on motorized routes.</p>
<p>Dust from dirt roads increases with heavy traffic.</p>	<p>Apply control measures to reduce dust; work with Inyo County.</p>	<p>Same as Alternative 1.</p>



# Roads, Routes & Trails (pg. 47)

BLM Routes	No Action	Alt. 1	Alt. 2
Convert to one way	0	5	4
Close and restore	0	4	5
Convert to hike only	0	0.3	0.3
Convert to non-motorized	0	2	0
Convert to non-mechanized	0	0	15
Route construction	0	2	2
Total Motorized	86	80	80
Total BLM Miles	97	95	95





# Quick Poll #2

Where are you  
joining us from?

*Answer in the poll and  
tell us more in chat!*



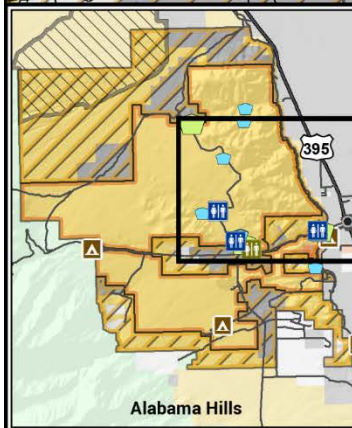
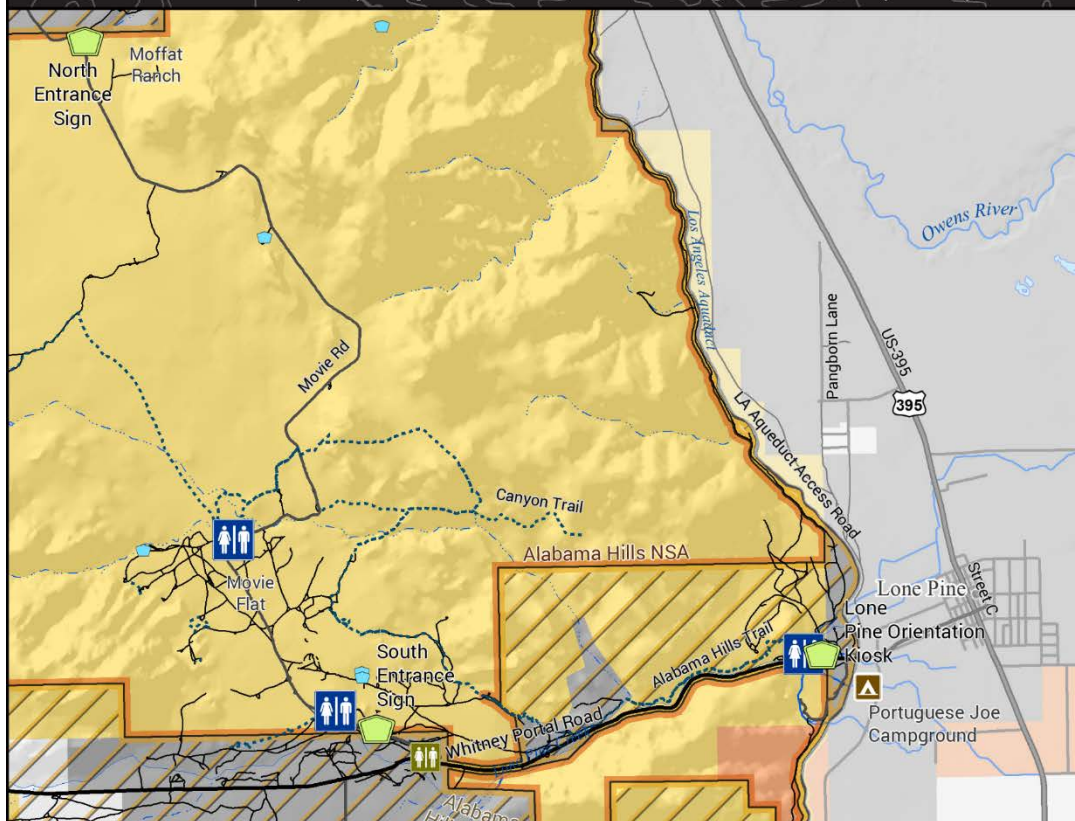
# Recreation: Facilities

No Action (pgs. 14-15)	Alternative 1 (pg. 16)	Alternative 2 (pg. 17)
Toilet and trash facilities available at Tuttle Creek Campground.	Install up to 3 toilet and wildlife proof trash facilities in NSA.	Install up to 2 additional toilets (total of 5) and wildlife proof trash facilities in NSA.
All visitors encouraged to dispose of human waste responsibly.	Require visitors to use facilities or pack out human waste.	Same as Alternative 1.
Parking areas poorly defined or occupied by campers.	Delineate/define up to 25 day use parking areas in closed dispersed camping areas.	Same as Alternative 1, with up to 10 additional parking areas.
Some directional and information signs exist.	Install targeted directional, informational and interpretive signs.	Same as Alternative 1.



# Alternative 1: Facilities

## Alabama Hills Planning Area National Scenic Area (NSA) & Special Recreation Management Area (SRMA)



### Alternative 1 - Proposed Facilities

#### Land Management

- BLM
- USFS
- BIA
- LADWP
- Private
- Alabama Hills SRMA
- Alabama Hills NSA
- Wilderness Study Area

#### Campground

- 2WD
- 4WD Low Clearance
- Trail

- Interpretive Signs or Kiosks

#### Proposed Toilet

- Proposed Toilet - Non-BLM
- NSA Entrance Signs

\* Signs may be installed as appropriate at NSA entrances



0 0.2 0.4 0.8 Miles

Date Produced: 7/3/2020

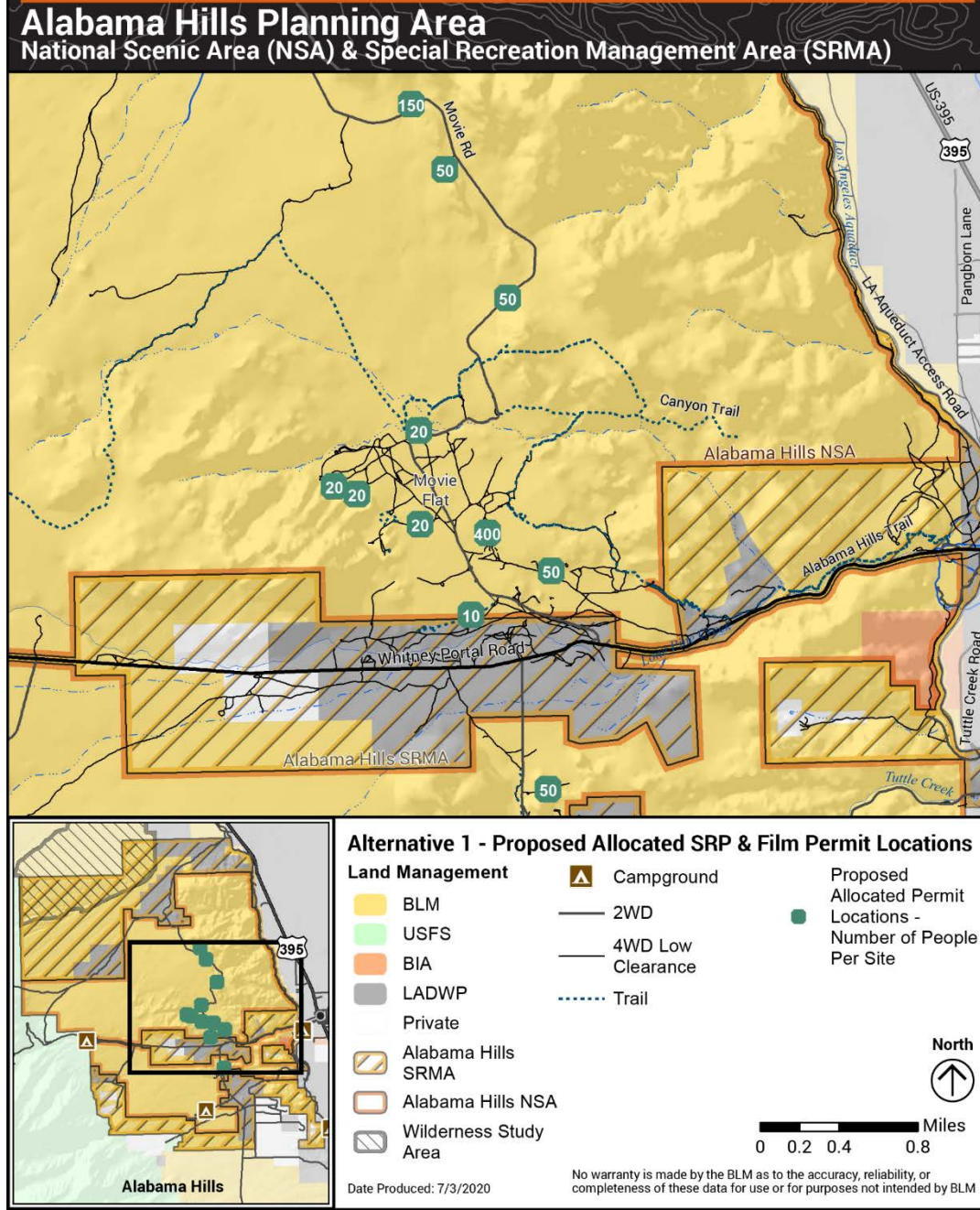
No warranty is made by the BLM as to the accuracy, reliability, or completeness of these data for use or for purposes not intended by BLM



# SRP & Filming

(pgs. 17-19 and 34-35)

- Includes Special Recreation (SRP) and Film Permits
- Proposed allocated locations and number of participants
- Proposed reduced and increased number of permits allowed annually





# Geologic Resources (pgs. 20-22)

- Mineral Withdrawal
- Abandoned Mine Lands
- Casual use activities





# Cultural and Historical Resources

(pgs. 22-24)

- Minimize or eliminate impacts to cultural and historical resources and traditional use areas
- Focused projects to preserve, protect, and restore historic structures
- Develop a historical context to improve interpretation and education





# Quick Poll #3



**What is your  
favorite  
plant/animal in the  
Alabama Hills?**

*Answer in the poll and  
tell us more in chat!*



# Biological Resources (pgs. 25-31)

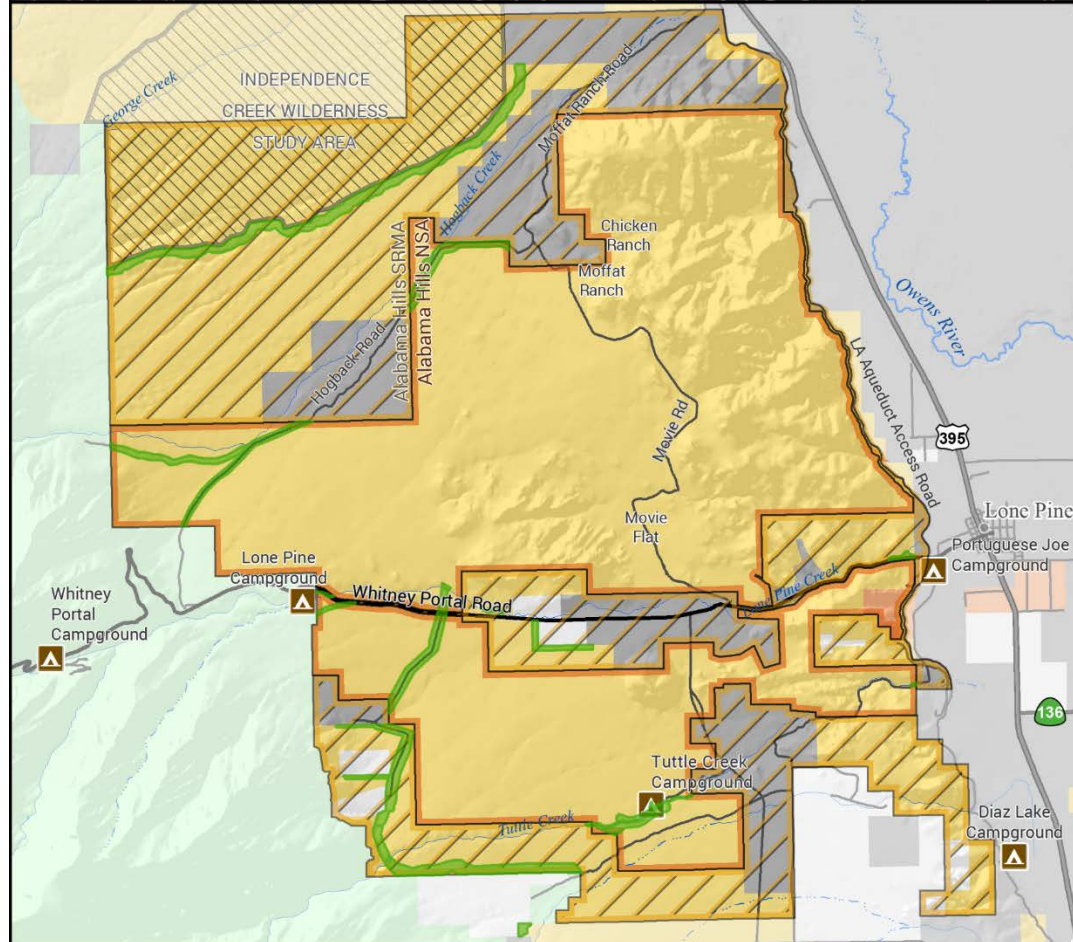
- Non-native plant treatment including the use of herbicide
- Restoration of disturbed areas
  - Dispersed campsites
  - Parking areas
  - Closed roads, routes and trails
- Ecosystem resilience
  - Pinyon woodlands, riparian areas and shrublands
- Fuels treatments
  - Strategically placed to reduce fuels in locations that could be used to help suppress wildfires





# Alternatives 1 (850 acres) and 2 (310 acres) Fuels Treatments

## Alabama Hills Planning Area National Scenic Area (NSA) & Special Recreation Management Area (SRMA)



### Alternatives 1 & 2 Proposed Vegetation Treatments

#### Land Management

- BLM
- USFS
- BIA
- LADWP
- Private

- Alabama Hills SRMA
- Alabama Hills NSA
- Wilderness Study Area
- US Hwy
- State Hwy

- 2WD Road
- Campground
- Proposed Vegetation Treatments



0 0.5 1 2 Miles

Date Produced: 7/2/2020

No warranty is made by the BLM as to the accuracy, reliability, or completeness of these data for use or for purposes not intended by BLM



# Livestock Grazing (pgs. 31-32)

- Increase monitoring and rangeland health assessment frequency
- Assess and repair or remove range projects

## Lands and Realty (pgs. 32-33)

- Right of Ways (ROWs)
- Energy corridor





# Interpretation, Education and Science (pgs. 35-36)

- Improve interpretive signage
- Continue working with partners to provide volunteer, interpretive and educational opportunities
- Continue to provide web-based information, as well as maps and brochures
- Improve education on responsible recreation
- Promote the area as a living laboratory for scientific study





# Planning Process

- Scoping Nov. - Dec. 2019
- **Preliminary EA Review Period (ends Aug. 7)**
- Compile, review and incorporate comments
- Develop preferred alternative and management plan
- Continue consultation
- Approved Plan: Target fall 2020
- Appeal Period: 30 days





# Effective Comments:

## Substantive

- References document pages, chapters or sections and uses objective information.
- Uses facts to question the adequacy, accuracy, methodology or assumptions of the analysis.
- Presents traditional or ecological knowledge.
- Proposes a reasonable new alternative or revision to the alternatives presented.
- Identifies a passage in the document that is unclear.

## Not Substantive

- Stating that you want your comment recorded as “substantive.”
- Crafting an emotionally compelling story without facts.
- Stating only that you agree or disagree with a policy, resource decision, analysis finding or presented alternative.
- Asking vague or open-ended questions.
- Commenting on unrelated projects.



# Tips for Substantive Comments



- Include any knowledge, experience or evidence relating to your observations and comments.
- Provide GPS readings or landmarks, if possible, when referring to specific locations.
- Present new information.
- Share issues relevant to the environmental analysis.
- Suggest alternatives to the proposed project and the reason(s) why they should be considered.
- Avoid comments like “I don’t like this” or “I do like this.”
- Remember that identical comments are treated as one comment, including form letters.



# Quick Poll #4

Which comment  
is substantive?

*Answer in the  
poll!*



# Written comments accepted:

- **Email:** [blm\\_ca\\_alabama\\_hills\\_planning@blm.gov](mailto:blm_ca_alabama_hills_planning@blm.gov)
- **Web:** ePlanning – Participate Now
- **Fax:** 760-872-5055
- **U.S. Mail:** BLM Bishop Field Office  
Attn: Alabama Hills Management Plan  
351 Pacu Lane, Suite 100  
Bishop, CA 93514

**Comment period ends August 7, 2020**



# Welcome! Technical Overview

RingCentral Meetings Meeting ID: 149-816-4006


You are viewing Jack Hughes' screen

View Options ▾

- Zoom Ratio Fit to Window >
- ✓ Side-by-side Mode

For best view, select Side-by-side Mode

## Alabama Hills Virtual Public Meetings



Chat Q&A

July 22 and 23, 2020

Audio Settings ^

Chat Raise Hand Q&A

Jack Hughes

Leave Meeting

For technical questions, send a chat to the Panelists or call/ text Jack Hughes at 619.686.7411



# Question & Answer #2

## To ask a question:

- Click the Q&A button at the bottom of the screen and type in your question.
- Or, click the “Raise Hand” button.
- The facilitator will **call on you** when it is your turn to speak and will unmute your line.
- If you are on **the phone**, you can email your question to [BLM CA Web BI@blm.gov](mailto:BLM_CA_Web_BI@blm.gov) and it will be read by the facilitators.
- Ask **one question** at a time.
- Be **respectful**. Threatening, profane or other inappropriate language will not be permitted. Disruptive participants will be removed from the webinar.

- *Reminder - Public comments will not be accepted during this webinar, but staff are happy to answer questions.*
- To comment on the EA, visit the Alabama Hills page on ePlanning

*This meeting is being recorded and will be shared after the meeting on ePlanning*



U.S. Department of the Interior  
Bureau of Land Management

# Thank you!

