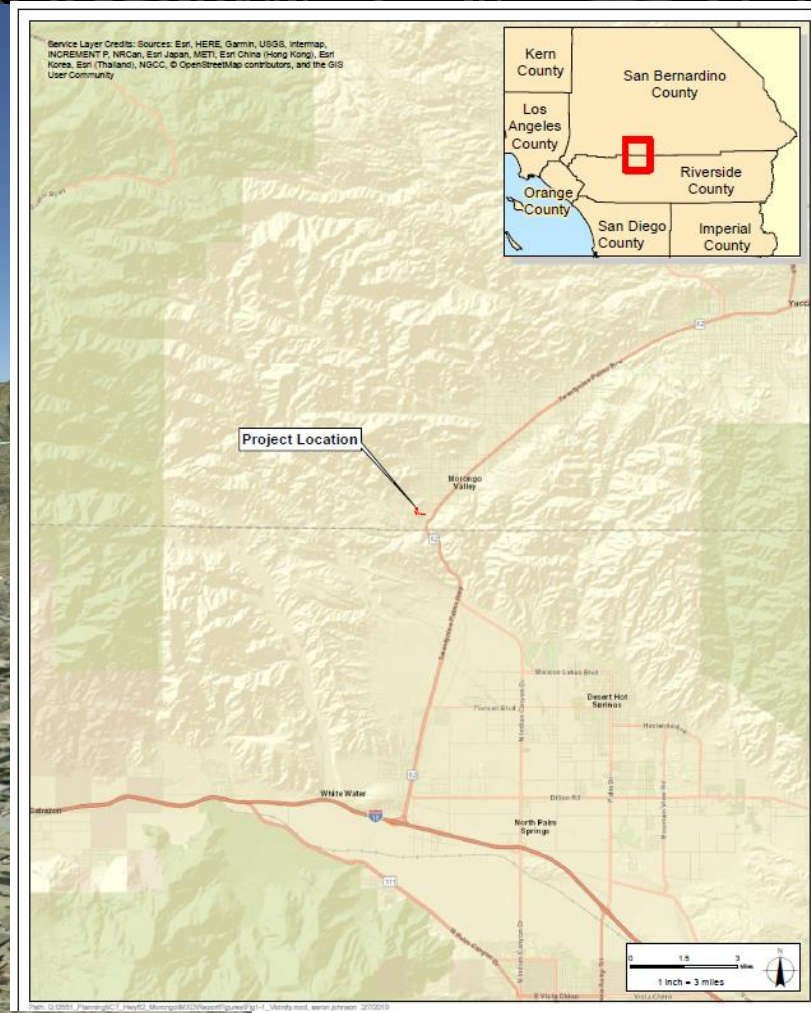




U.S. Department of the Interior
Bureau of Land Management

Morongo Highway 62 Communication Site Project Overview

Environmental Assessment and Land Use Plan Amendment





Microsoft Teams – Webinar Meeting Parameters

Meeting will focus on presenting the project and EA findings.

- Use the Raise Hand feature for Question and Answer at end of presentation
- Keep questions project focused
- Questions are limited to 1-minute



Technical Issues or Questions?

Email: Sarah.Anderson2@wsp.com

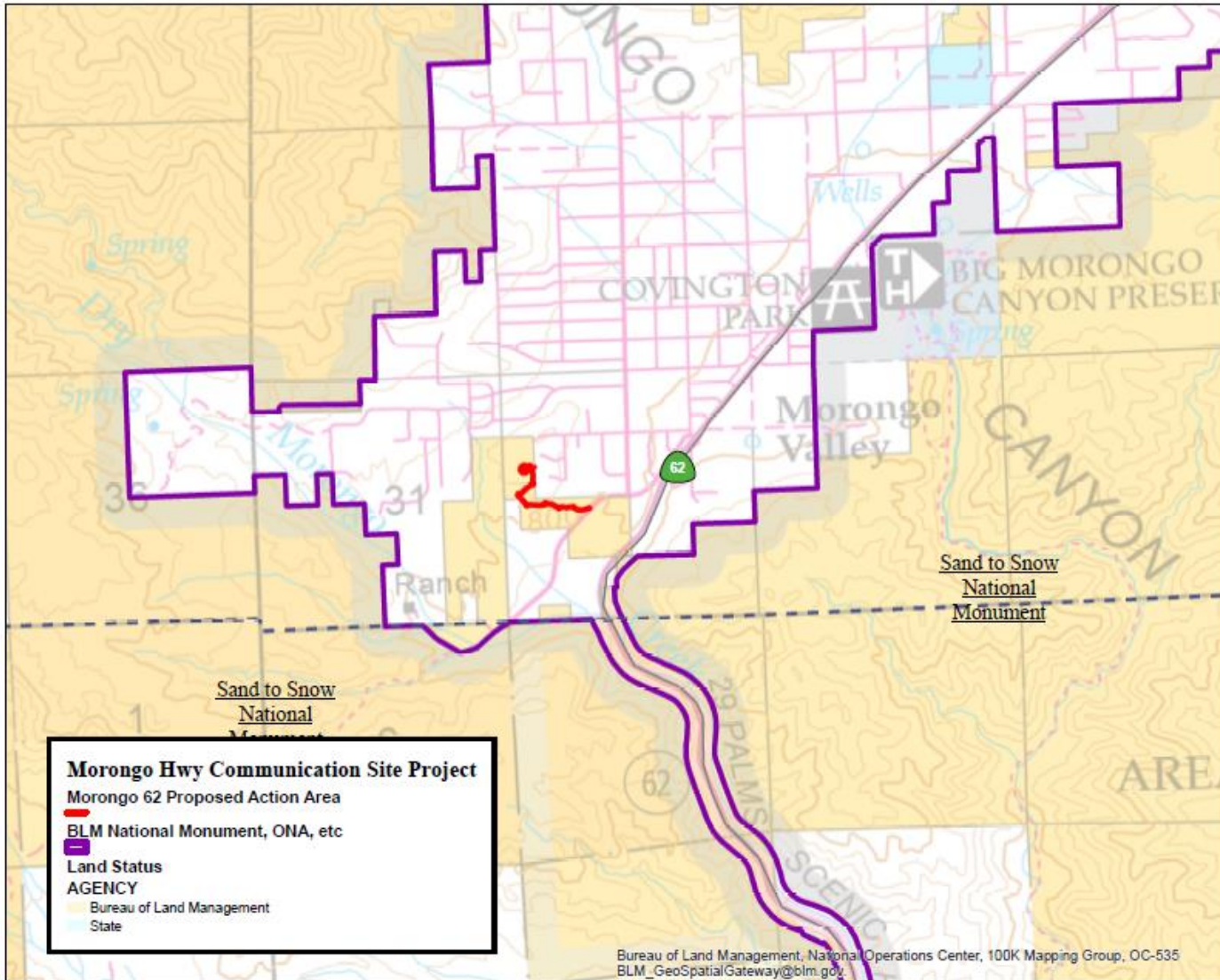


Microsoft Teams

Instructions for submitting formal comments will be provided at end of presentation



Project Area Overview





Project Summary

Project Details

- One communication site and access road
- 196 feet tall and 23-foot-wide triangular base
- Five solar arrays
- Approximately 2.005 acres on public lands

BLM Decision to be considered

- To amend or not to amend 2.005 acres of BLM lands from VRM Class II to Class III within the CDCA plan, as amended;
- Grant a right-of-way (ROW) as requested, with conditions, or deny the application



Purpose and Need

- Under the BLM’s multiple-use mandate, the BLM’s purpose and need is to review and evaluate the Project to authorize the construction, operation, maintenance, and decommission of the following components:
 - 1) communication tower and access road
 - 2) equipment shelter, solar arrays, and supporting components
- In addition, Biden’s Secretarial Priority of “Making investments to support the Administration’s goal of creating millions of family-supporting and union jobs,” and “Bipartisan Infrastructure Law,” which helps to “ensure every American has access to high-speed internet.”
- Support FirstNet, created to build, operate, and maintain the first high-speed, nationwide wireless broadband network dedicated to public safety (Public Law 112-96, signed on February 22, 2012 (Middle Class Tax Relief and Job Creation Act of 2012



EA Analysis Areas

- Biological Resources
- Visual Resources
- Environmental Justice/Socioeconomics
- Special Area Designations
- Soil Resources
- Noise
- Cultural Resources

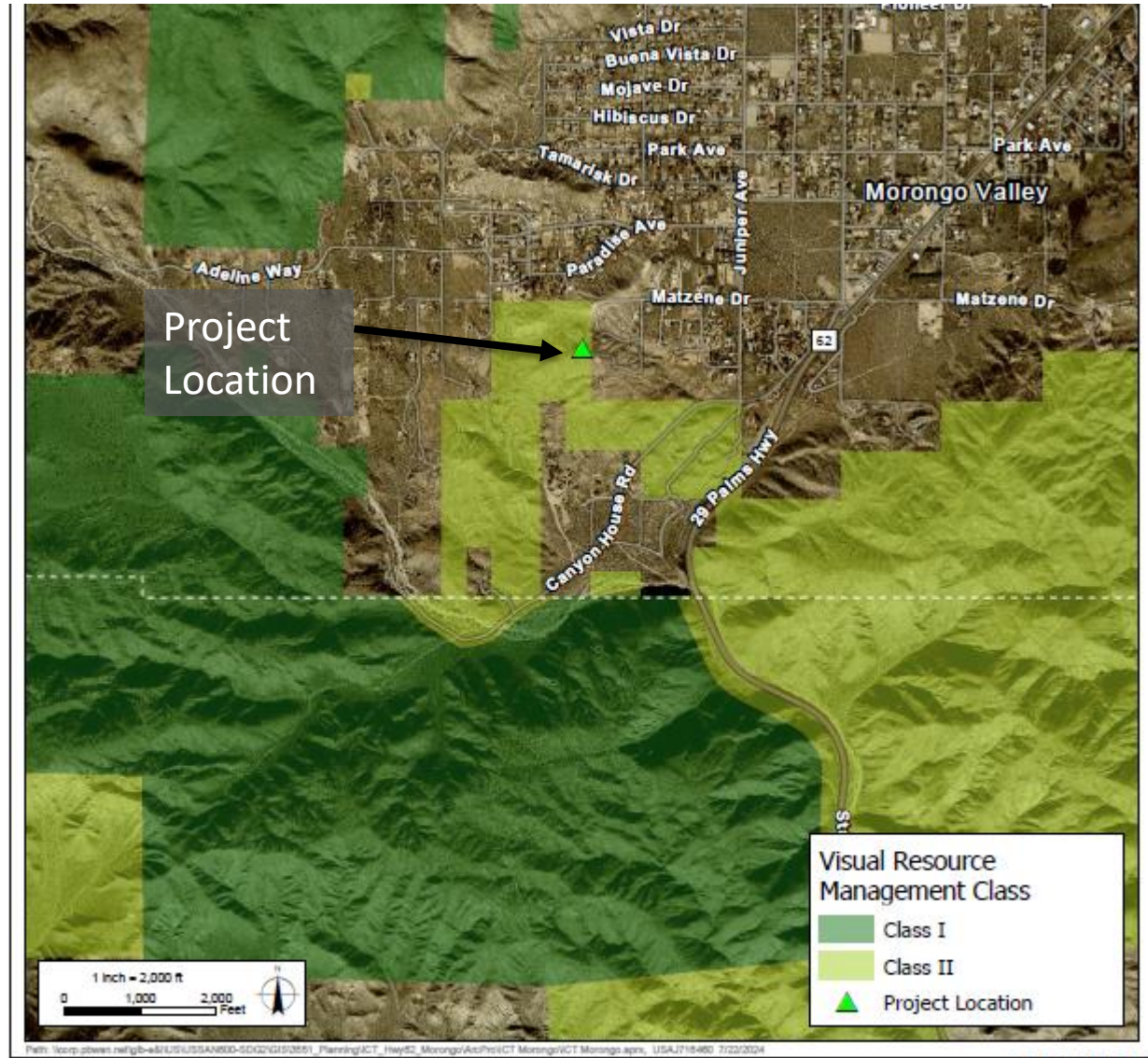


Key Issues

- Visual Resources: Non-Conforming Visual Resource Management Objectives; subsequent
- Land Use Plan Amendment (LUPA)- Change from Visual Resource Management Class II Area to a Class III Area



BLM Visual Resources Areas



BLM Visual Resource Management Classes
Hwy 62/Morongo Valley Communications Site
San Bernardino County, CA

FIGURE

3-3



Alternatives

- **Alternative A** – Proposed Project (2.005 ac.)
- **Alternative B** – Reduced Footprint Alternative (same location, no solar, utility easement) 1.50 ac.

Alternatives Considered but Eliminated From Analysis in EA

- **Reduced Height Communication Tower** – evaluated to reduce visual impacts. Signal propagation studies support shorter towers (75-ft. and 145-ft. towers) infeasible to reach coverage goals of project.
- **Transponders on Existing Towers** – evaluated use of 4G or 5G transponders on existing wooden poles to eliminate need for tower. Eliminated due to poles located in the Caltrans ROW and Sand to Snow National Monument.
- **Use of Existing County Television Tower** – propagation studies show coverage could be provided to Morongo community, but coverage would not extend to Hwy 62 corridor. Does not meet goals and needs of project
- **Call Boxes** – No call boxes located in 3-mile segment of Hwy 62 with no service. Does not meet goals and needs of project.



Alternative Locations on BLM Land

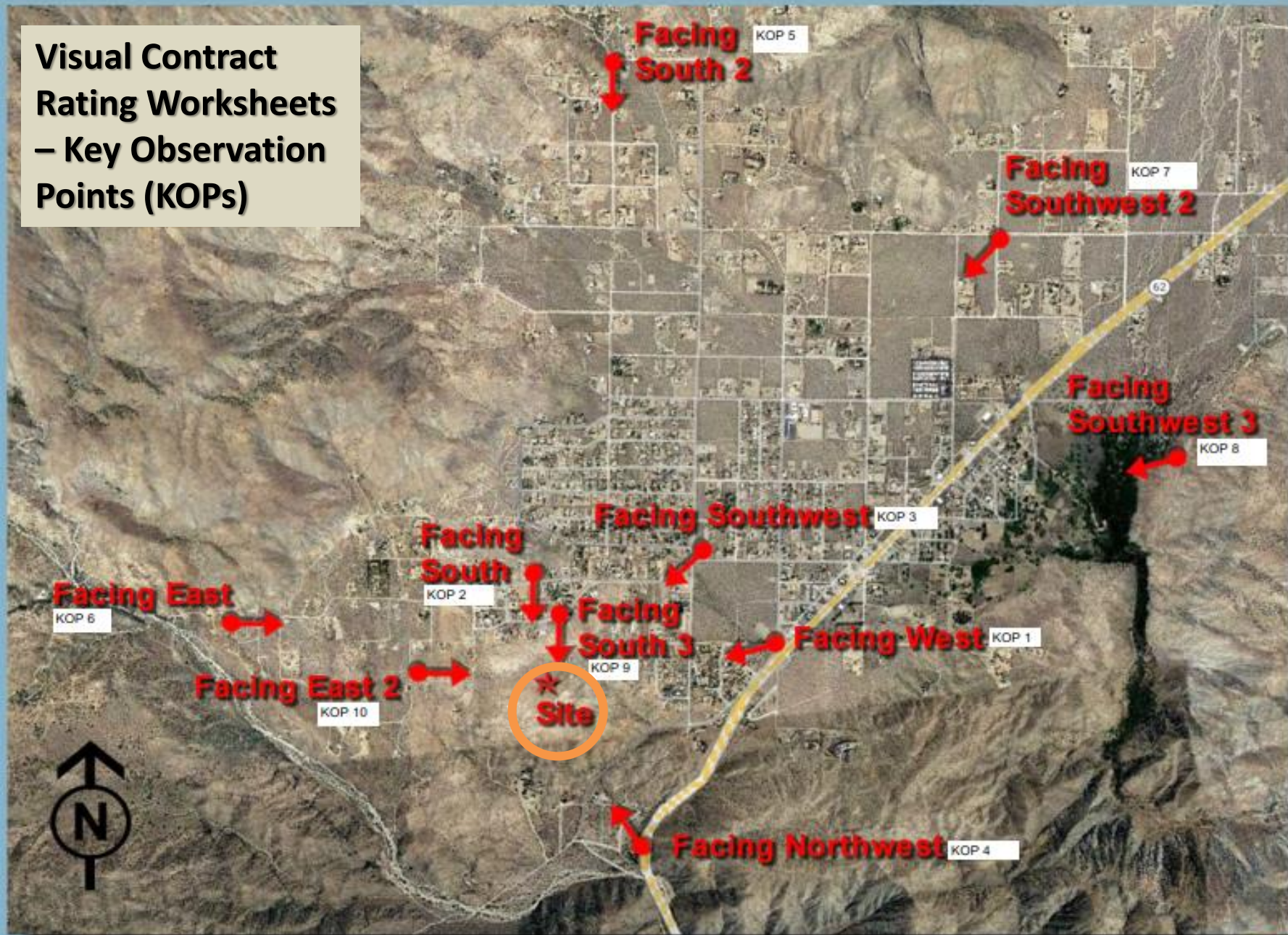
The alternative locations were evaluated to meet purpose of the Proposed Action and avoid visual resources effects

Site Constraints

- Topography necessary for line-of-sight coverage to reach both residents and remote area of Hwy 62
- Land to the southeast, both sides of Highway 62 for approximately three miles, were recently designated the "Sand to Snow National Monument," which now allows only foot traffic
- Higher terrain to west/northwest designated San Gorgonio Wilderness
 - Results of propagation studies indicate only the proposed location, at the highest point locale, will serve both the mountain pass through Hwy 62 towards Palm Springs as well as densify the Wireless Broadband Service to local homes, parks, and businesses.
 - All alternative locations on BLM-managed lands were dismissed based upon the insufficient level of signal coverage required to service the Highway 62 area.



**Visual Contract
Rating Worksheets
– Key Observation
Points (KOPs)**





Visual Contrast Rating Worksheets & Color Analysis (Factory Gray – KOP 2)

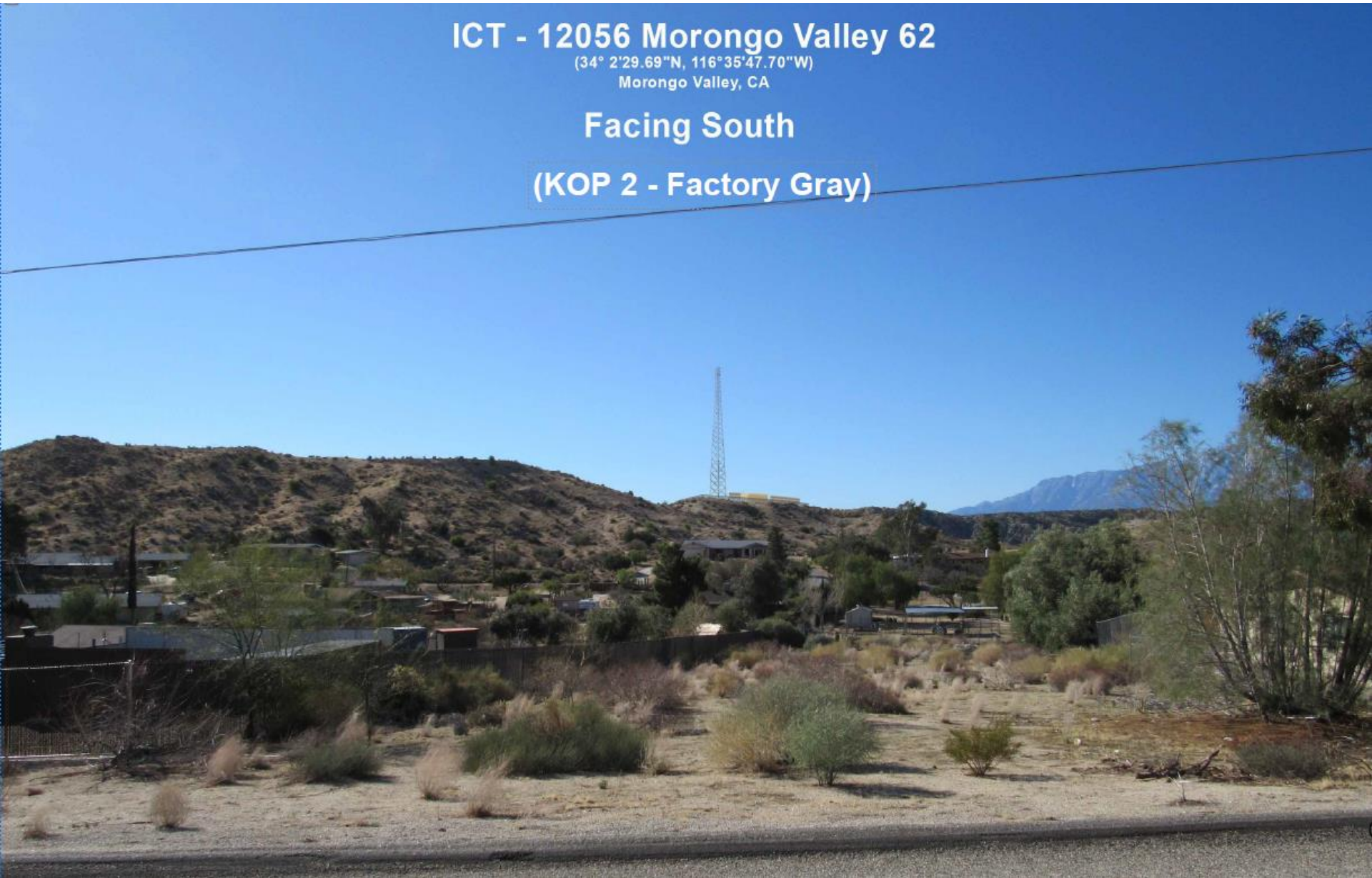
ICT - 12056 Morongo Valley 62

(34° 2'29.69"N, 116°35'47.70"W)

Morongo Valley, CA

Facing South

(KOP 2 - Factory Gray)





Visual Contrast Rating Worksheets & Color Analysis (Covert Green – KOP 2)

ICT - 12056 Morongo Valley 62

(34° 2'29.69"N, 116°35'47.70"W)

Morongo Valley, CA

Facing South

Access road to tower not visible from this KOP, so none shown

(KOP 2 - Covert Green)





Visual Contrast Rating Worksheets & Color Analysis

Form 8400-4
(September 1985)

UNITED STATES
DEPARTMENT OF THE INTERIOR
BUREAU OF LAND MANAGEMENT

Date 1/16/23

District

Resource Area

Activity (program)

VISUAL CONTRAST RATING WORKSHEET

SECTION A. PROJECT INFORMATION

1. Project Name Morongo Canyon at Highway 62 Multi-Tenant Wireless Broadband Communications Site		4. Location Township T1S Range R4E Section 31	5. Location Sketch See KOP 10
2. Key Observation Point KOP #10, Tujung Drive			
3. VRM Class VRM Class II			

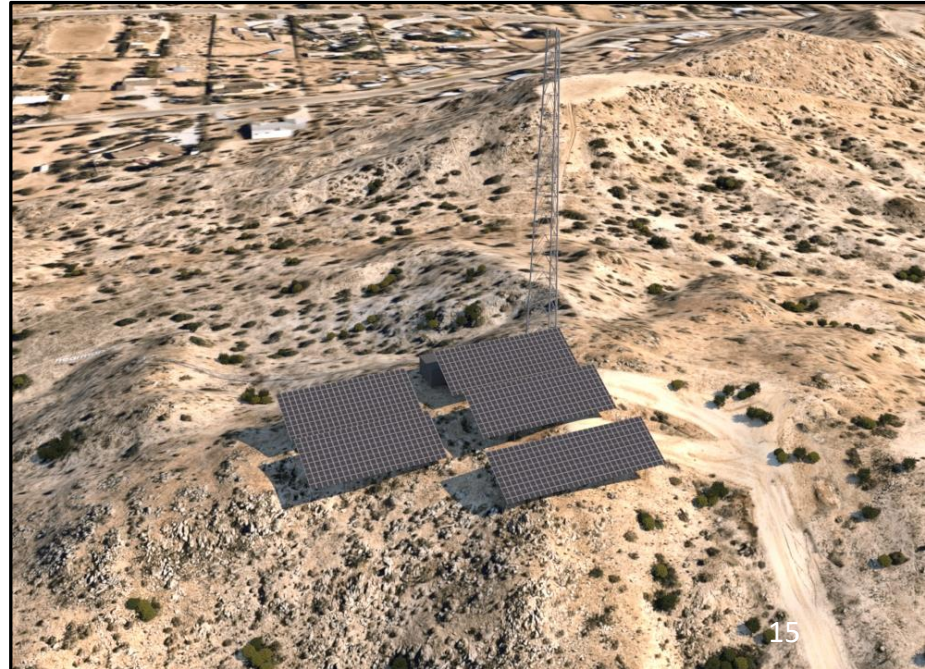
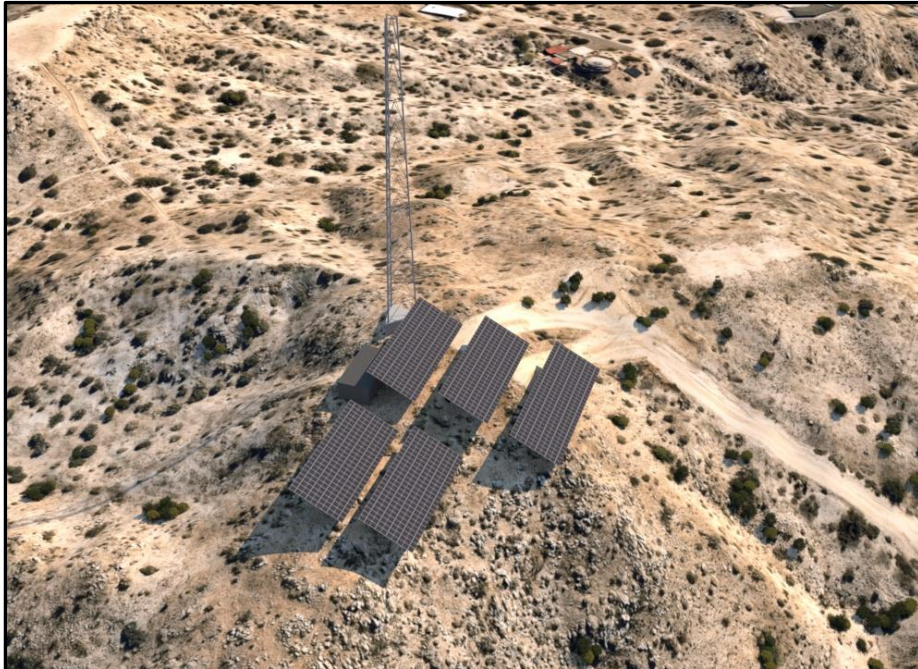
SECTION B. CHARACTERISTIC LANDSCAPE DESCRIPTION

	1. LAND/WATER	2. VEGETATION	3. STRUCTURES
FORM	Indistinct, rolling, rough, horizontal forms of mountains from foreground to background. Skyline creates horizontal boundary across view.	Patches of jagged, bold vegetation in foreground.	A few scattered vertical poles in background.
LINE	Transitional edges between hills in foreground, butt edge between mountain and skyline in background. All horizontal lines.	Bold, silhouetted, angular lines of vegetation in foreground.	A few scattered vertical poles in background.
COLOR	Tans, browns, and greens in foreground, blue sky in background. Natural, soft, dull colors.	Muted, dull greens and browns.	A few dark brown poles in background.
TEXTURE	Medium grain, medium density, uneven/random regularity.	Medium grain, medium density, uneven/random regularity.	Fine grain, sparse density, uneven/random regularity.

SECTION D. CONTRAST RATING SHORT TERM LONG TERM

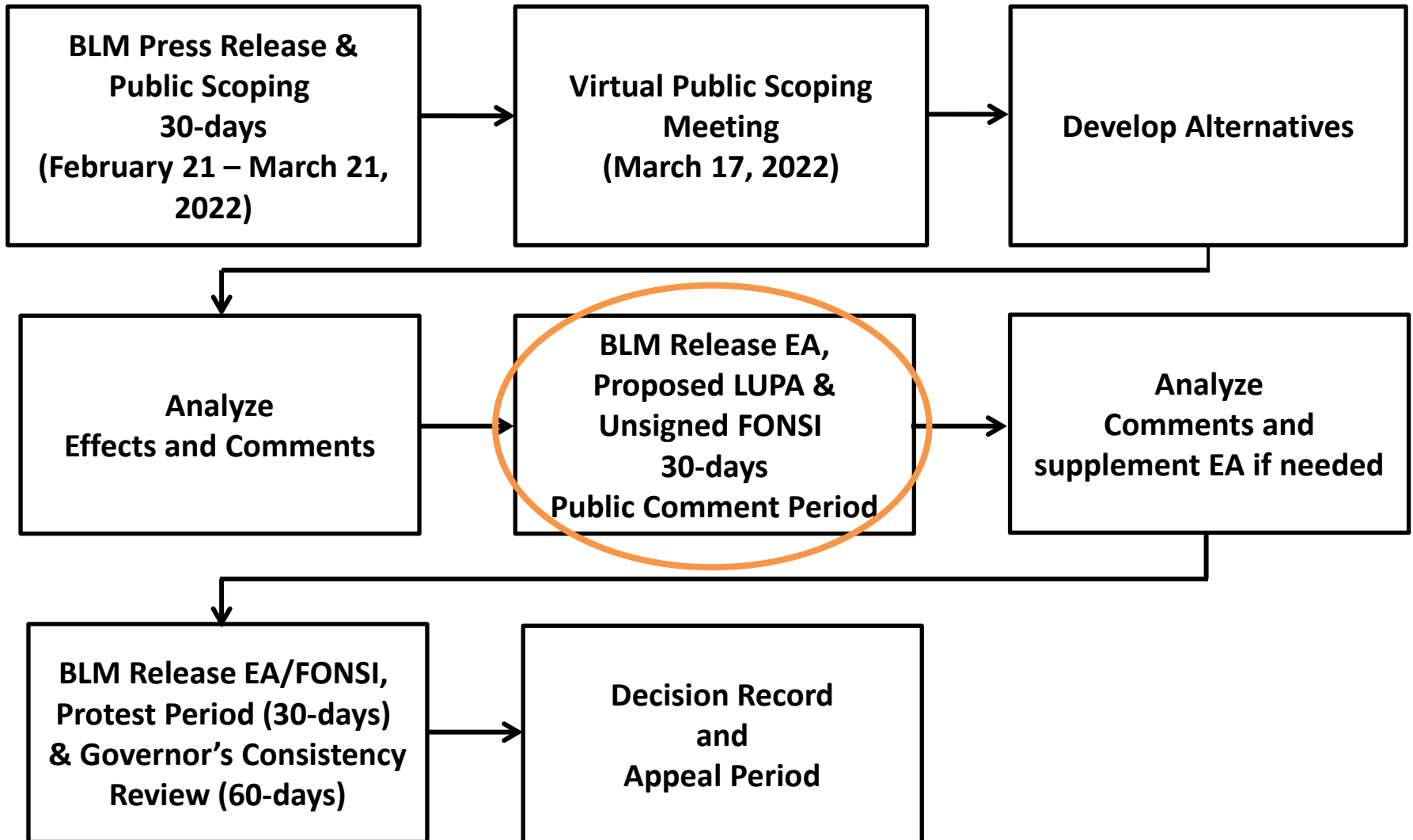
ELEMENTS	DEGREE OF CONTRAST	FEATURES												2. Does project design meet visual resource management objectives? <input type="checkbox"/> Yes <input checked="" type="checkbox"/> No (Explain on reverse side)	3. Additional mitigating measures recommended? <input checked="" type="checkbox"/> Yes <input type="checkbox"/> No (Explain on reverse side)	Evaluator's Names	Date
		LAND/WATER BODY (1)				VEGETATION (2)				STRUCTURES (3)							
		Strong	Moderate	Weak	None	Strong	Moderate	Weak	None	Strong	Moderate	Weak	None				
Form				X				X				X				Gina Sawaya	1/16/23
Line				X				X				X				Matt Toedtli	1/27/23
Color				X				X				X					
Texture				X				X				X					

3D Visual Simulations





NEPA Environmental Assessment & Land Use Plan Amendment Process





NEPA Schedule

Milestone

Date

- Publish NOI

30-day scoping period

February 2022

- Publish EA and Unsigned FONSI

30-day comment period

August 2024

- Publish Signed FONSI and Protest Period

30-day Protest Period and 60-day

Governor's Consistency Review

October 2024

- Decision Record

November 2024



How to Submit Comment

Submit a ***Substantive Comment***:

1. BLM NEPA ePlanning Website:

<https://eplanning.blm.gov/eplanning-ui/project/1502263/510>

1. Submit via EMAIL:

blm_ca_ps_morongocommunicationsite@blm.gov

1. Submit via Mail:

“Morongo Communication Site Project EA”

Attn: Matt Toedtli, Project Manager

Bureau of Land Management, California Desert District Office

1201 Bird Center Drive, Palm Springs, CA 92262

A substantive comment identifies a concern or issue you may have with the document, describes why it's a problem, and offers other factual and unbiased information for the Bureau to consider (BLM)