

**Louse Canyon
Geographic Management Area
Rangeland Health Management Actions
Draft Environmental Impact Statement**

Appendix M
Maps

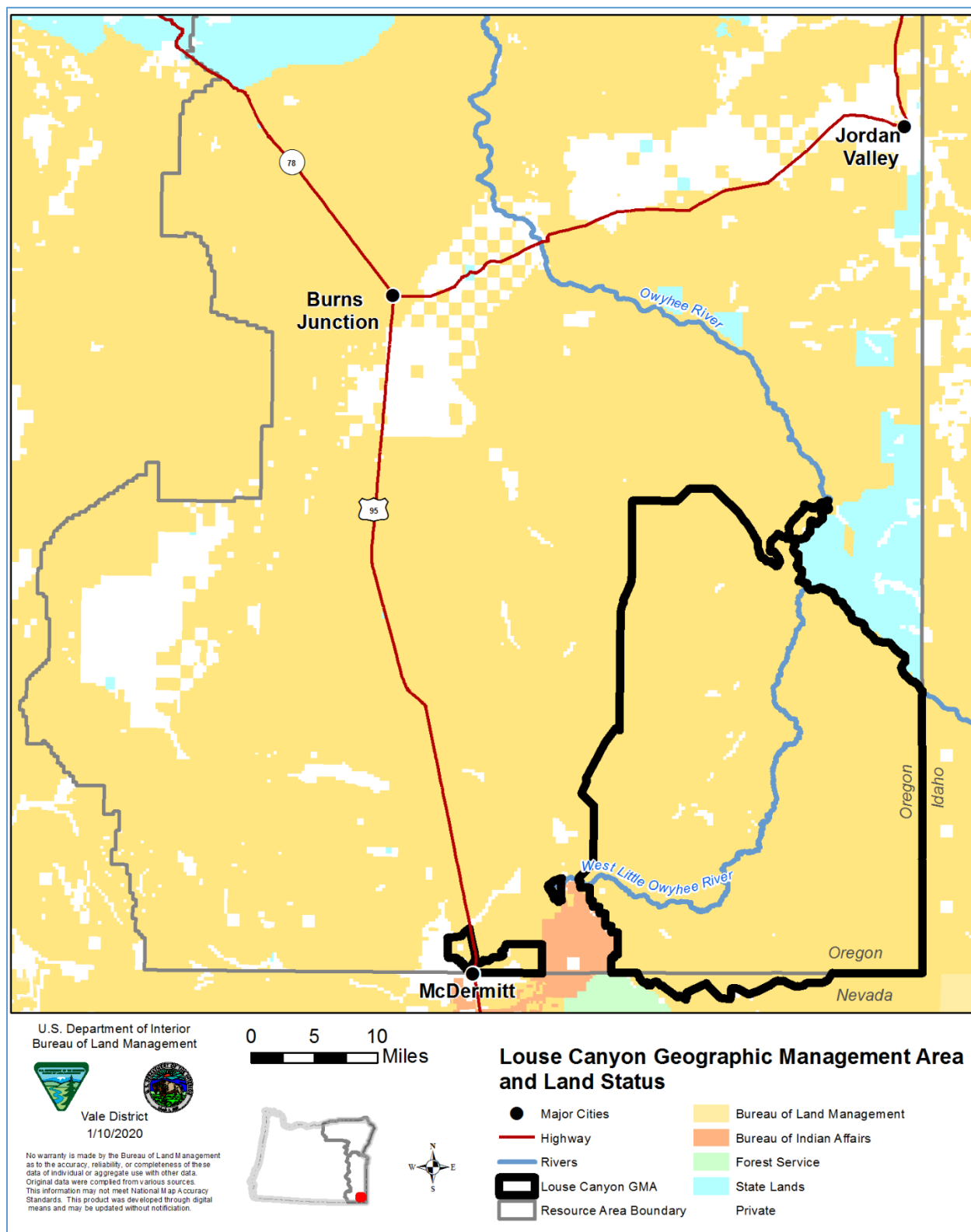
This page intentionally left blank.

Map Title

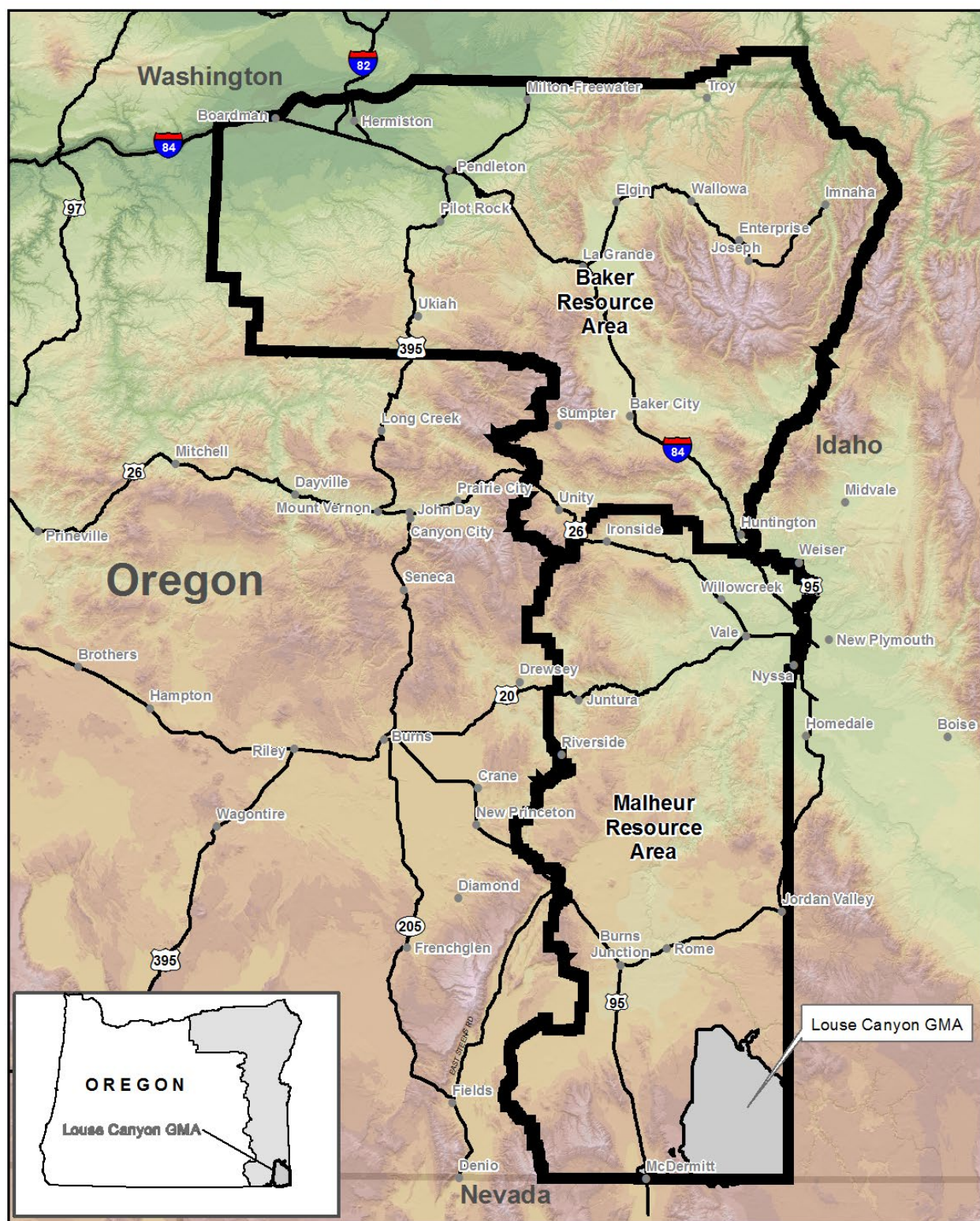
1	
2	<u>M-1 Louse Canyon Geographic Management Area and Land Status</u>
3	<u>M-2 General Vicinity Map: Louse Canyon GMA</u>
4	<u>M-3 Grazing Allotments and Pastures</u>
5	<u>M-4 Preliminary Ecological Site Descriptions</u>
6	<u>M-5 Modified Vegetation Communities</u>
7	<u>M-6 Soil Map Units Clay Content in Upper 6 inches</u>
8	<u>M-7 Soil Map Units K Factor</u>
9	<u>M-8 Soil Map Units Organic Matter Upper 6 inches</u>
10	<u>M-9 Soil Map Units pH in Upper 6 inches</u>
11	<u>M-10 Soil Map Units Sand Content Upper 6 inches</u>
12	<u>M-11 Soil Map Unit Wind Erodibility Index (WEI)</u>
13	<u>M-12 Soil Map Units Wind Erodibility Group (WEG) Ratings</u>
14	<u>M-13 Soil Map Units Highly Erodible and Fragile (HEF)</u>
15	<u>M-14 Lentic Proper Functioning Condition</u>
16	<u>M-15 Lotic Proper Functioning Condition</u>
17	<u>M-16 Perennial and Intermittent Streams</u>
18	<u>M-17 Watersheds and Subbasins</u>
19	<u>M-18 303 (d) Listed Streams</u>
20	<u>M-19 Redband Trout and Fish-Bearing Stream Reaches</u>
21	<u>M-20 Greater Sage-Grouse Habitat and Sagebrush Focal Areas</u>
22	<u>M-21 Sage Grouse Seasonal Habitat</u>
23	<u>M-22 Pygmy Rabbit Habitat</u>
24	<u>M-23 Big Game Habitat</u>
25	<u>M-24 Special Designated Management Areas</u>
26	<u>M-25 Fire History 1985-2019</u>
27	<u>M-26 State and Transition</u>
28	<u>M-27 Resistance and Resilience</u>

Map Titles

- 1
- 2 [M-28 Invasive Annual Grass Treatment and Native Plant Establishment](#)
- 3 [M-29 Sagebrush Planting](#)
- 4 [M-30 Sagebrush Thinning](#)
- 5 [M-31 Sagebrush Thinning Tebuthiuron](#)
- 6 [M-32 Proposed Riparian Restoration Projects](#)
- 7 [M-33 Trough Relocation](#)
- 8 [M-34 Fence Construction Common to Alternatives A–D](#)
- 9 [M-35A Water Developments Option 1 Common to Alternatives A–D](#)
- 10 [M-35B Water Developments Option 2 Common to Alternatives A–D](#)
- 11 [M-36 Proposed Crossing Permit Routes](#)
- 12 [M-37 Scott and Kayla Gooch Proposal](#)
- 13 [M-38 Kimble Wilkinson Ranches Proposal](#)
- 14 [M-39 Schadler Ranch Inc. Proposal](#)
- 15 [M-40 Alternative E—Proposed Project Removal](#)
- 16 [M-41 Rescinded Range Projects](#)
- 17 [M-42 Projects Considered but Eliminated from Detailed Analysis](#)
- 18 [M-43 Wilderness Study Area](#)
- 19 [M-44 Visual Resource Management](#)
- 20 [M-45 Key Observation Points](#)
- 21 [M-46 Visual Resource Inventory](#)
- 22 [M-47 Lands with Wilderness Characteristics](#)
- 23 [M-48 Alternative F Invasive Annual Grass Treatment and Native Plant Establishment](#)
- 24 [M-49 Alternative F Shrub Planting](#)
- 25 [M-50 Alternative F Sagebrush Thinning](#)
- 26 [M-51 Alternative F Proposed Exclosures and Boundary Fence-lines](#)
- 27 [M-52 Alternative F Proposed Water Developments](#)
- 28 [M-53 Alternative F Proposed Crossing Permit Routes](#)



General Vicinity Map: Louse Canyon GMA

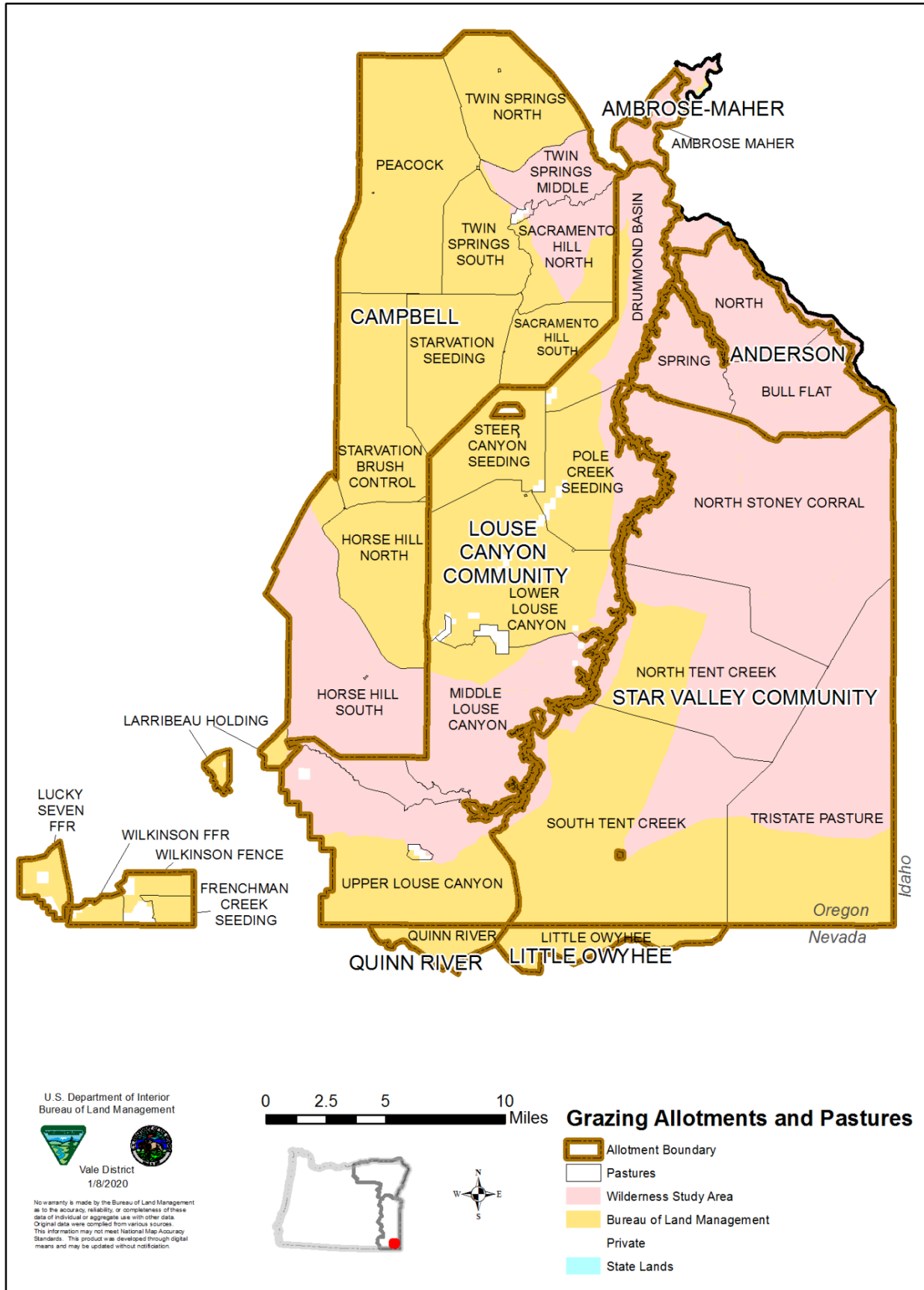


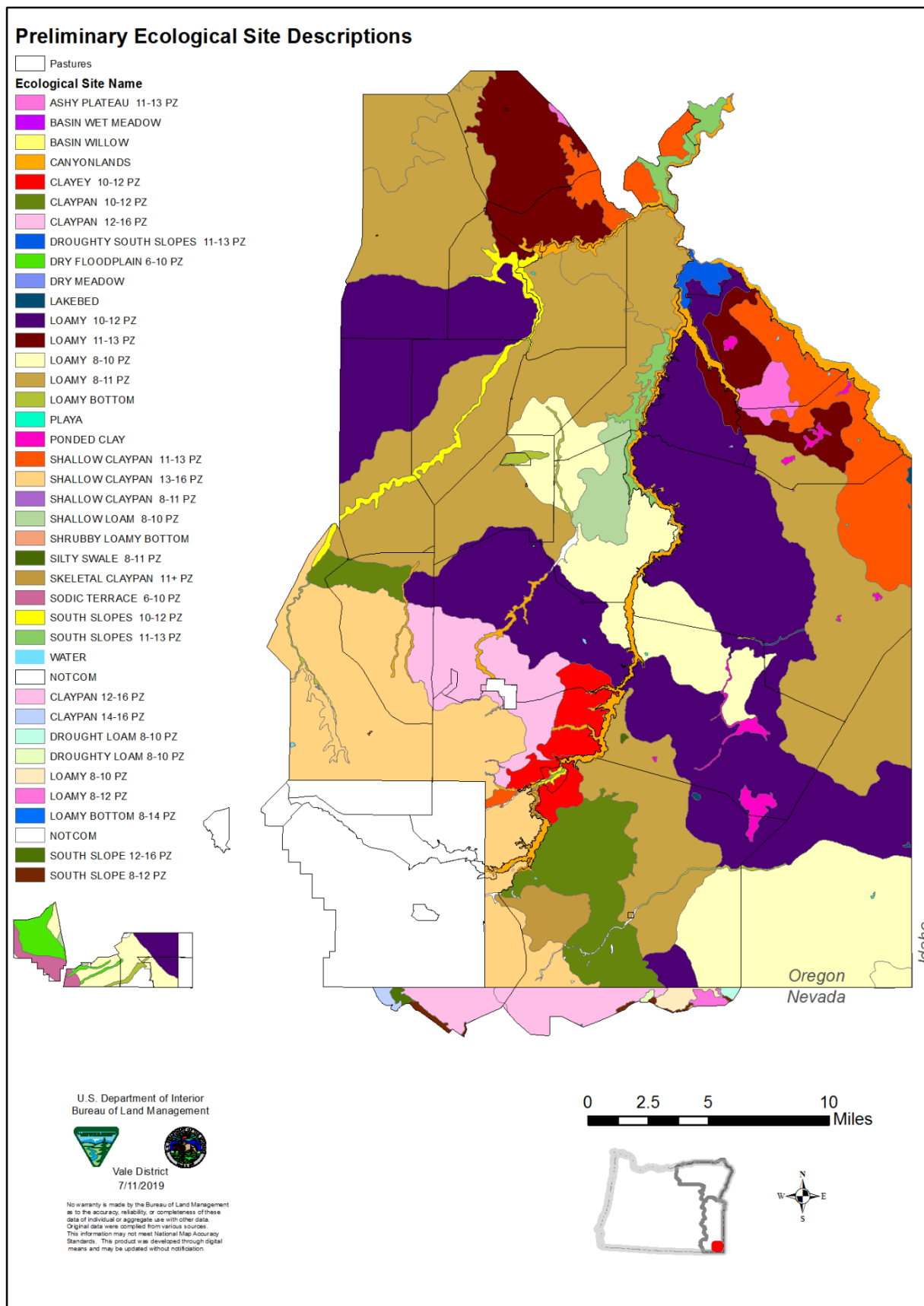
July 10, 2019

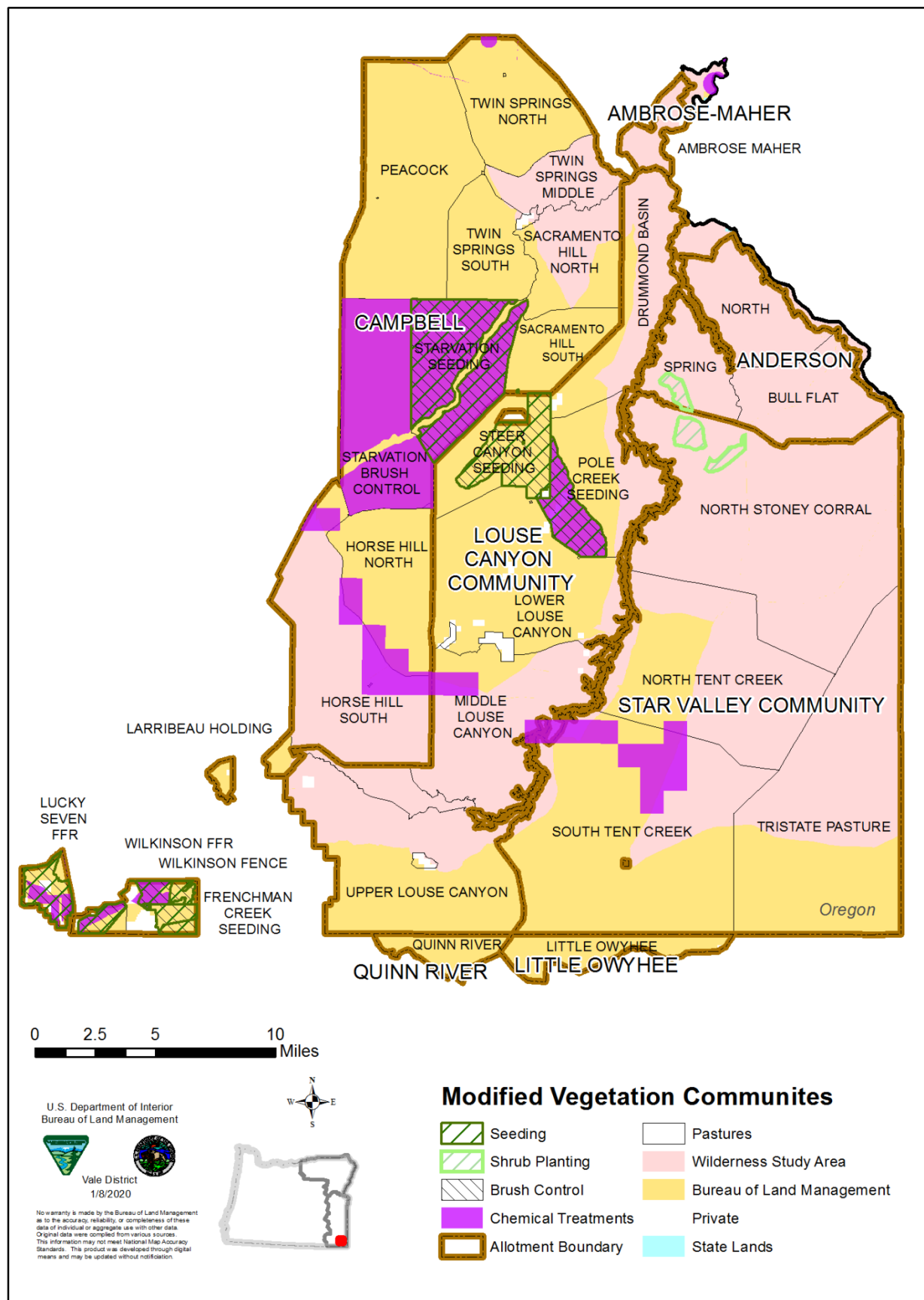
Note: No warranty is made by the Bureau of Land Management as to the accuracy, reliability or completeness of these data for individual or aggregate use with other data. Original data was compiled from various sources and may be updated without notification.

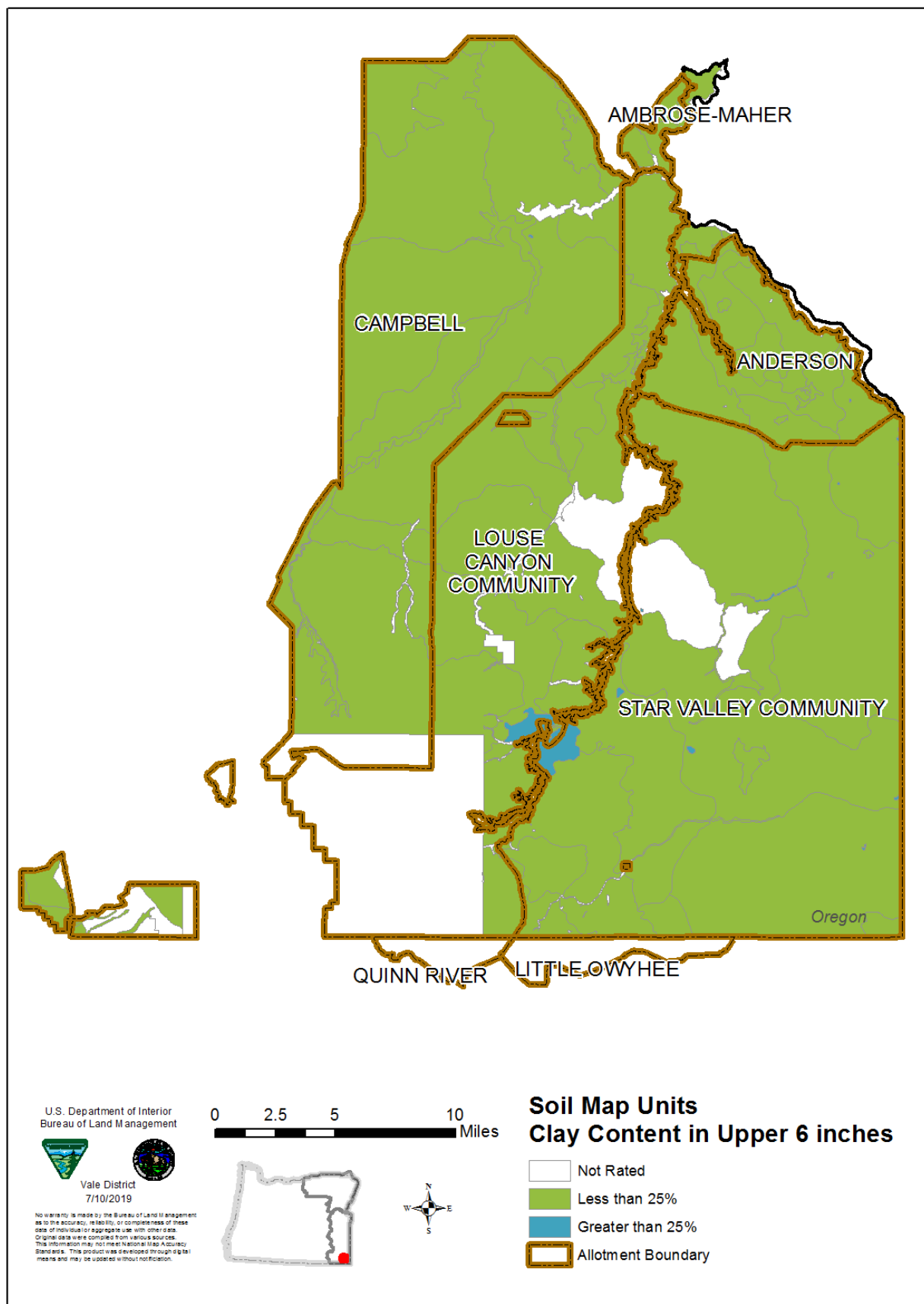


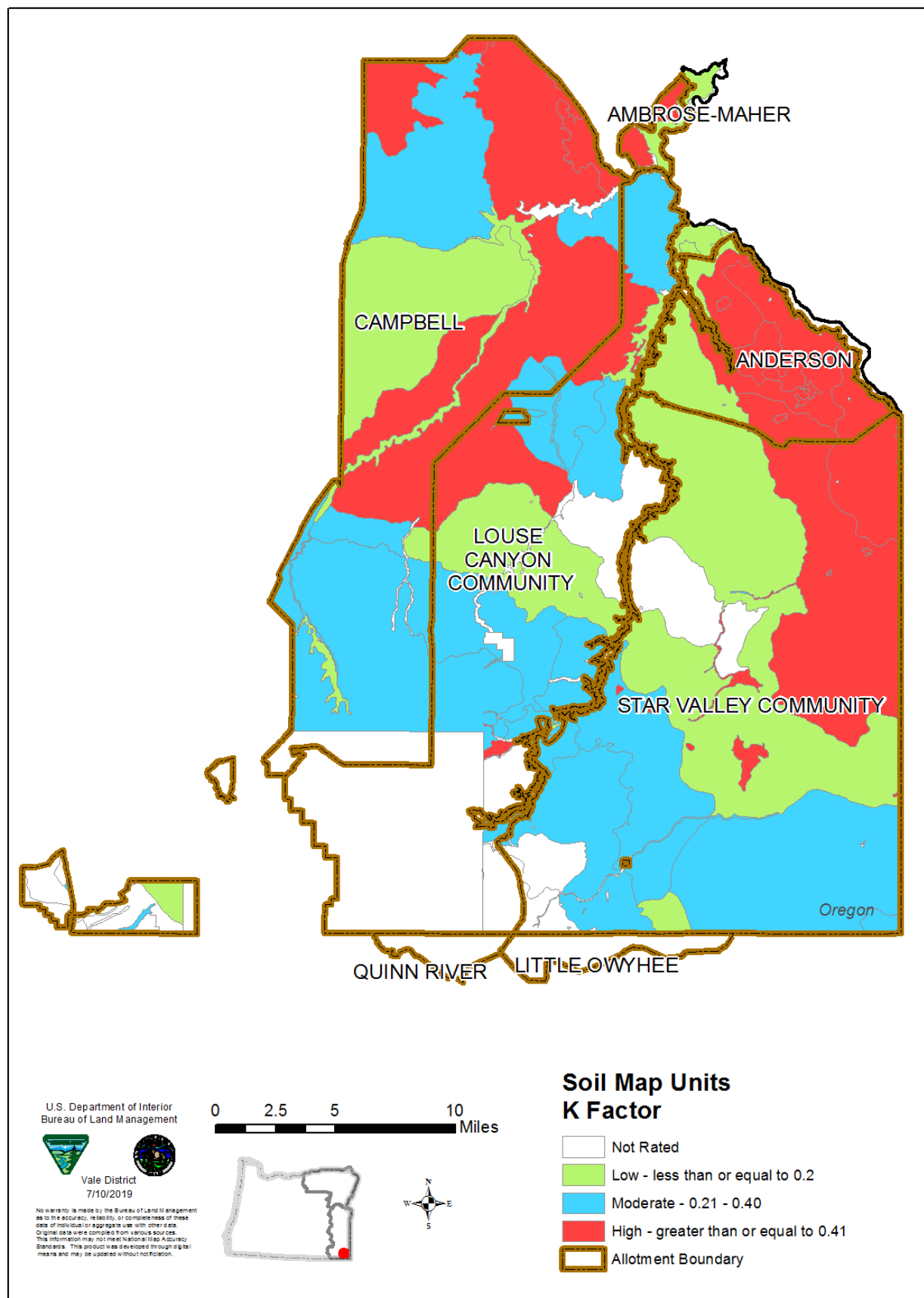
0 5 10 20 30 40 Miles

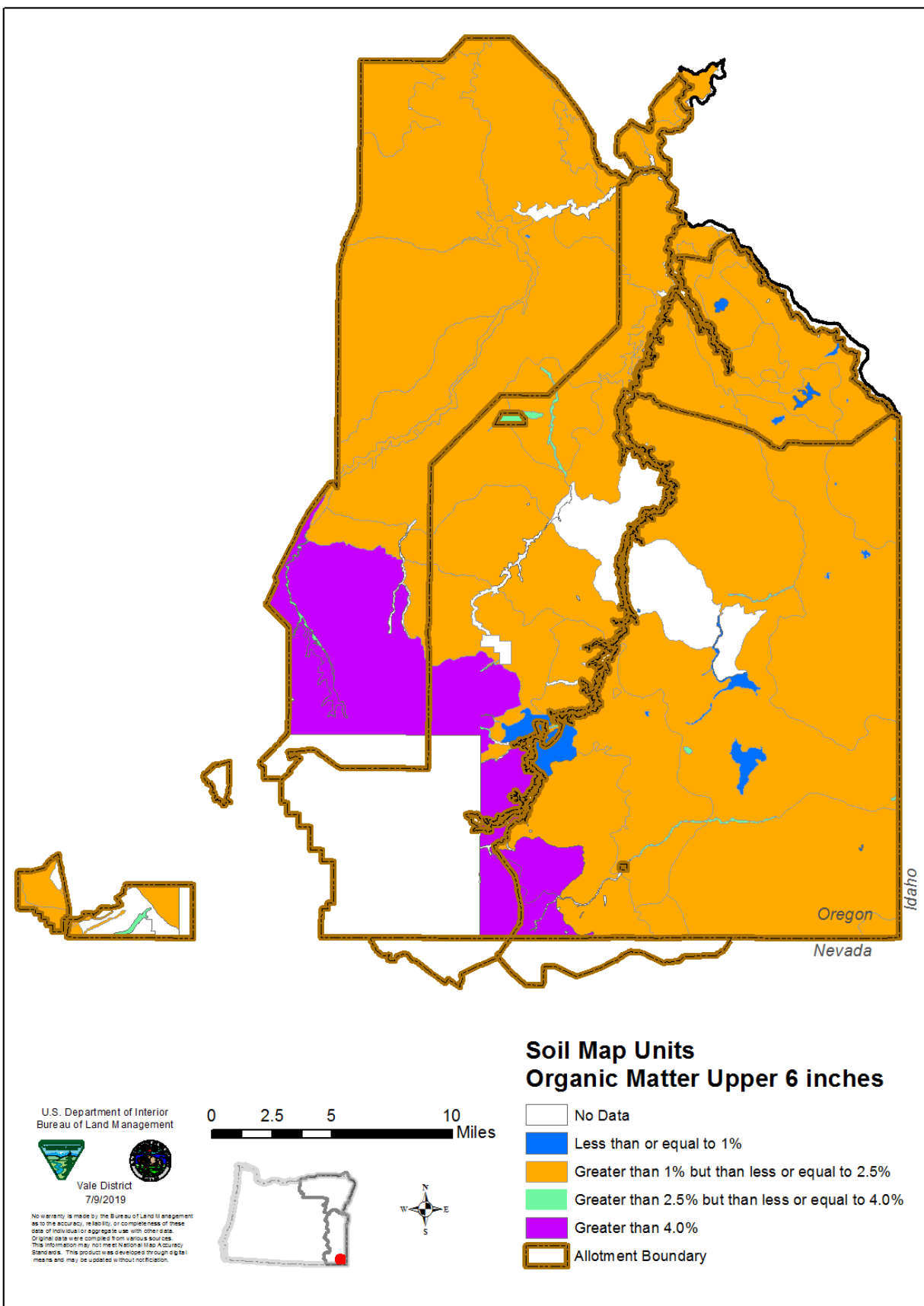


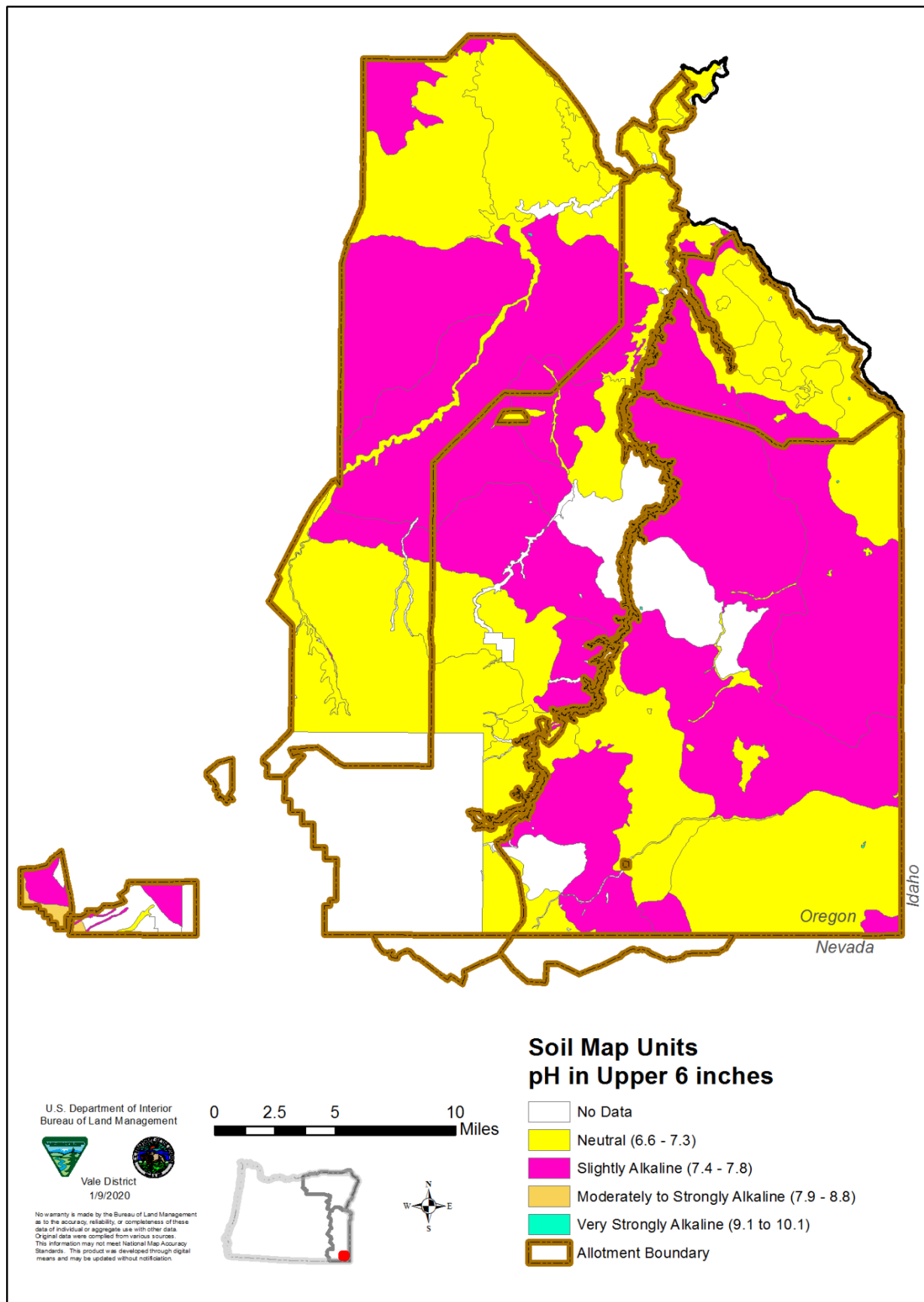


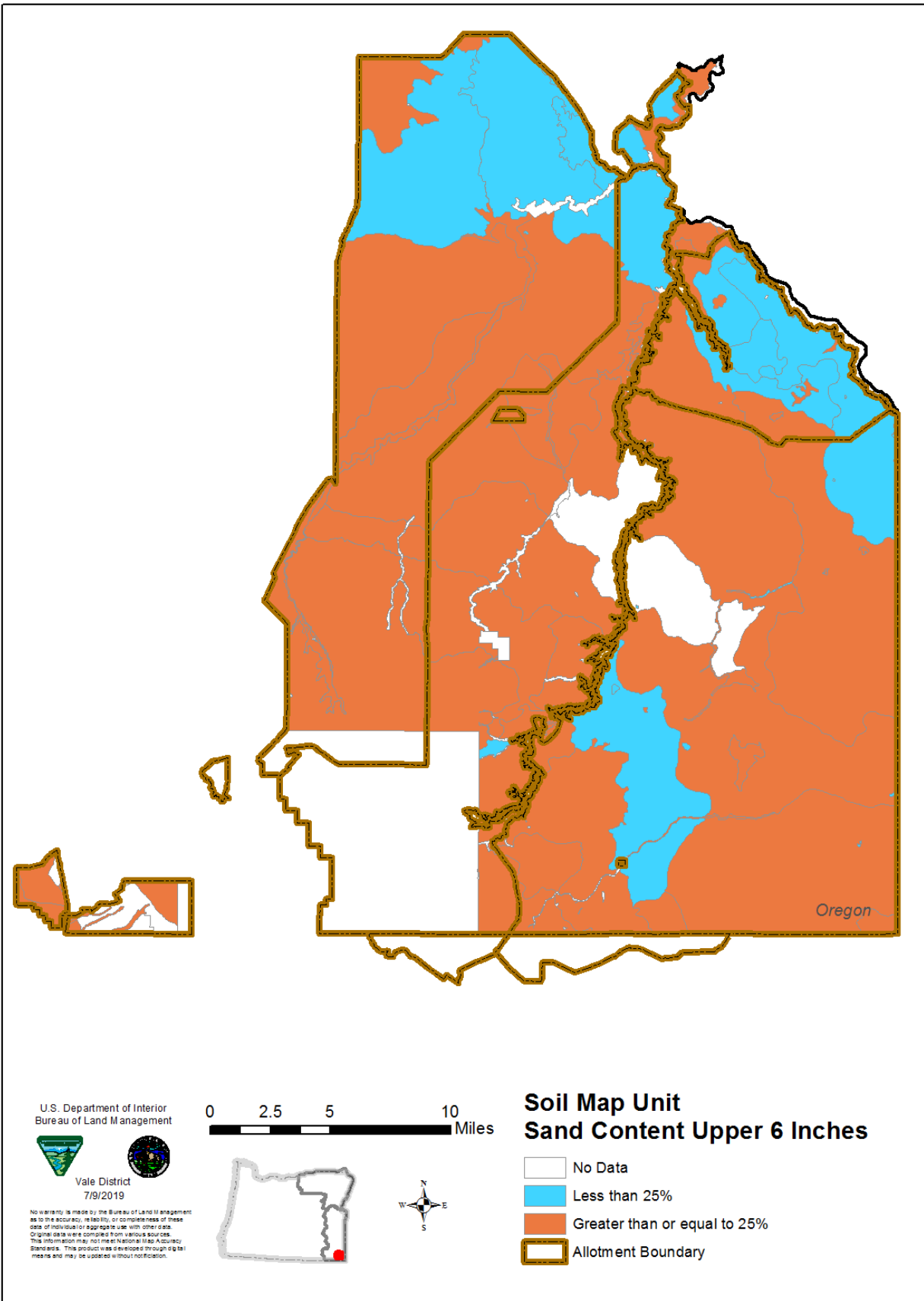


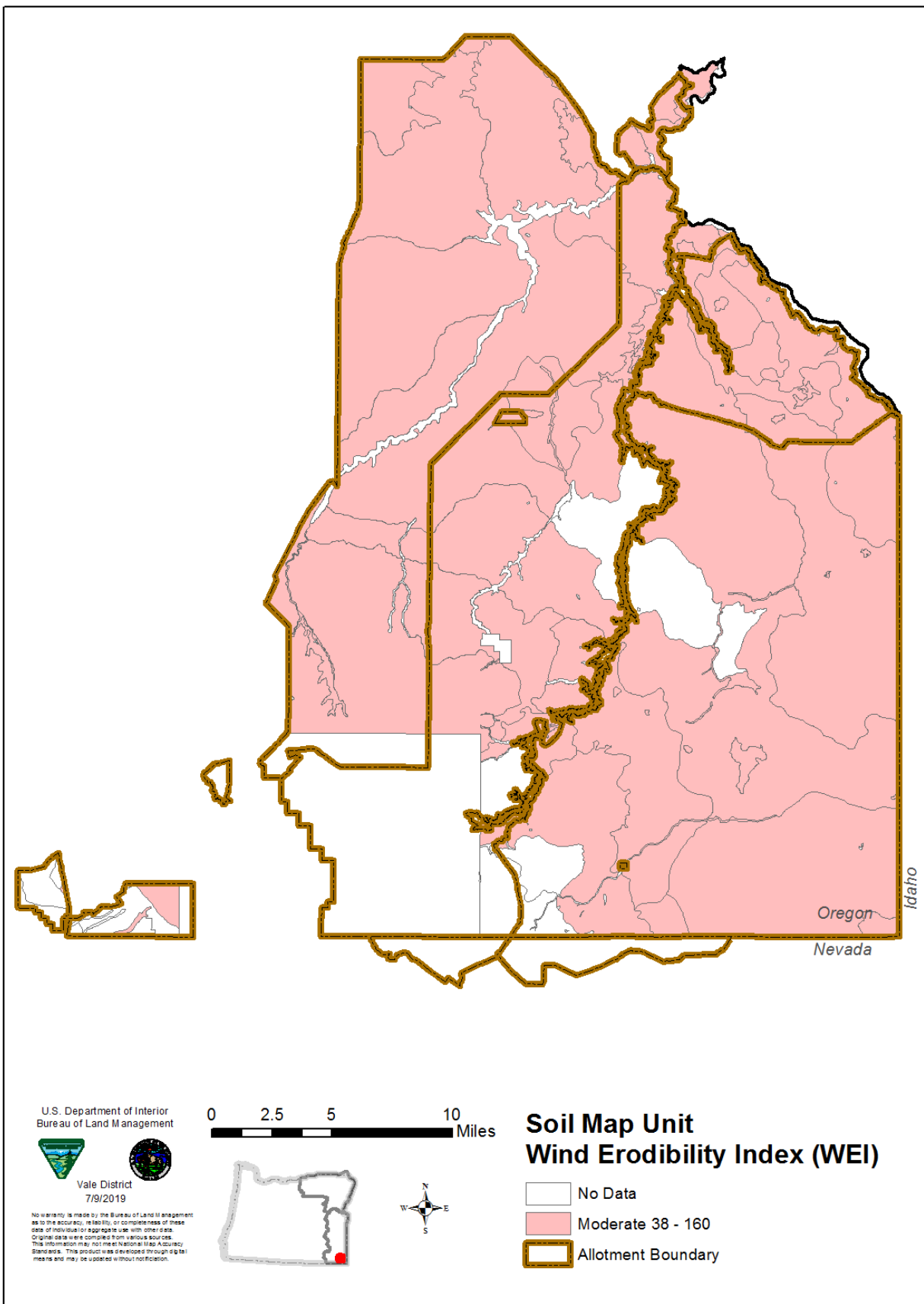


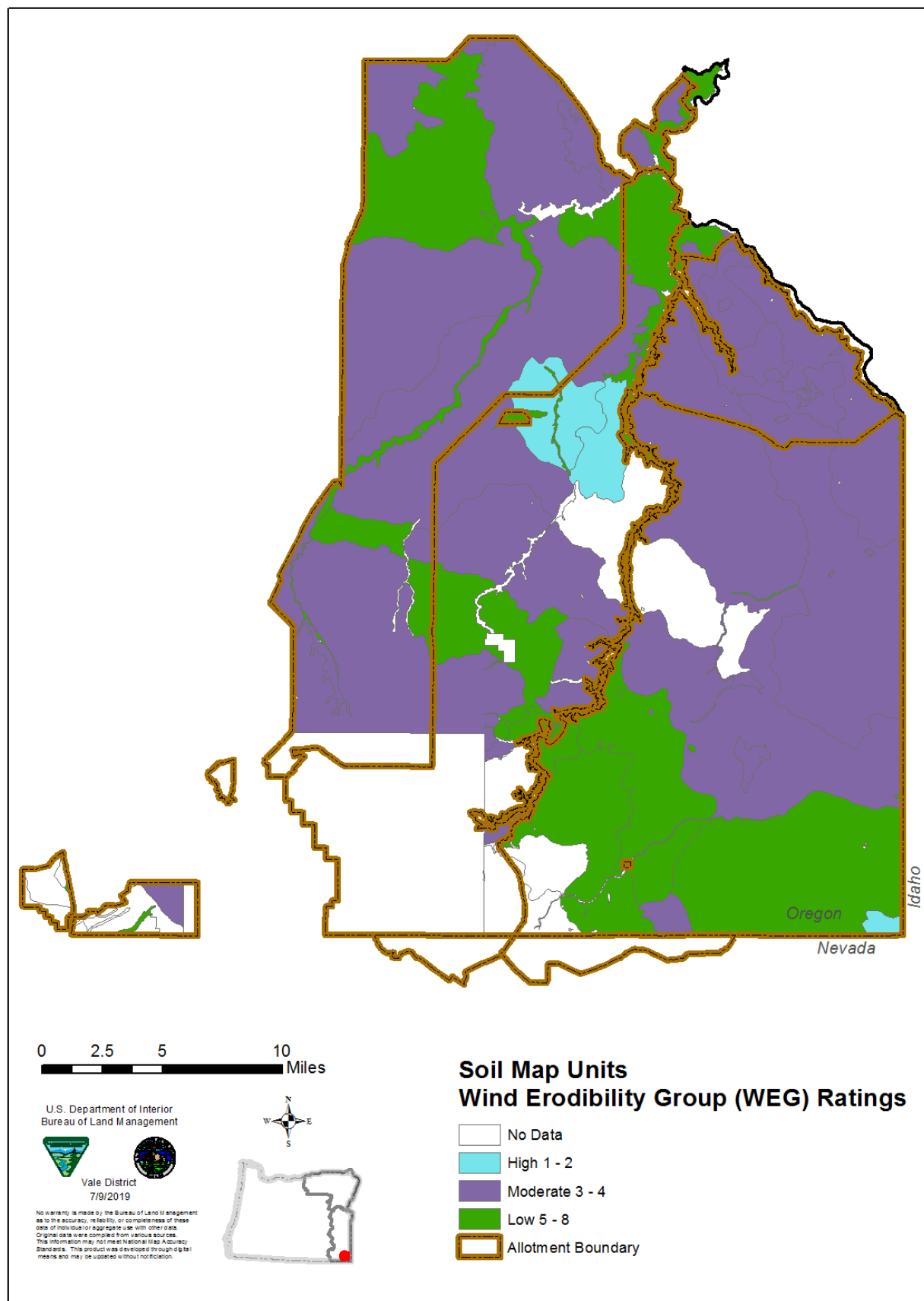


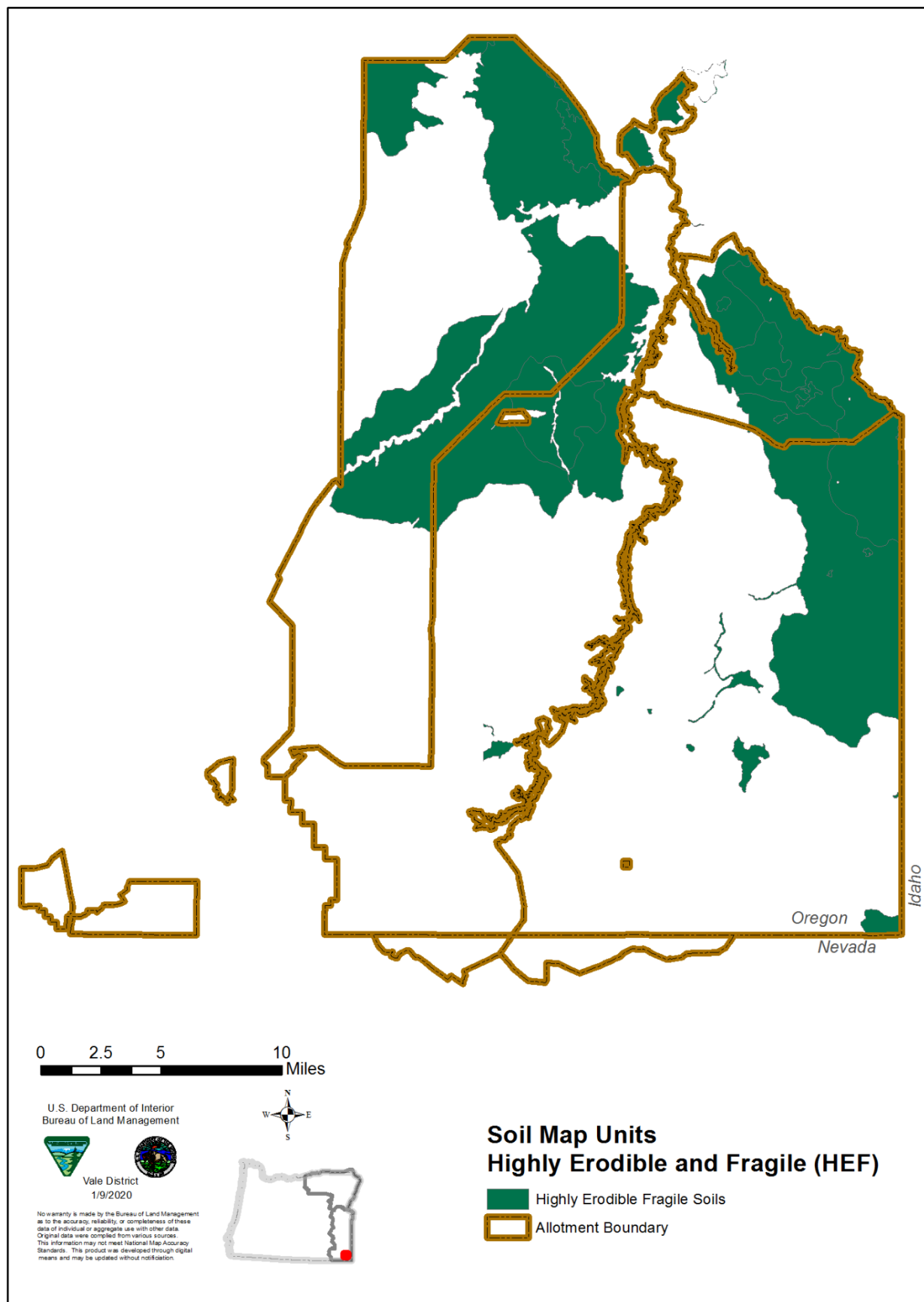


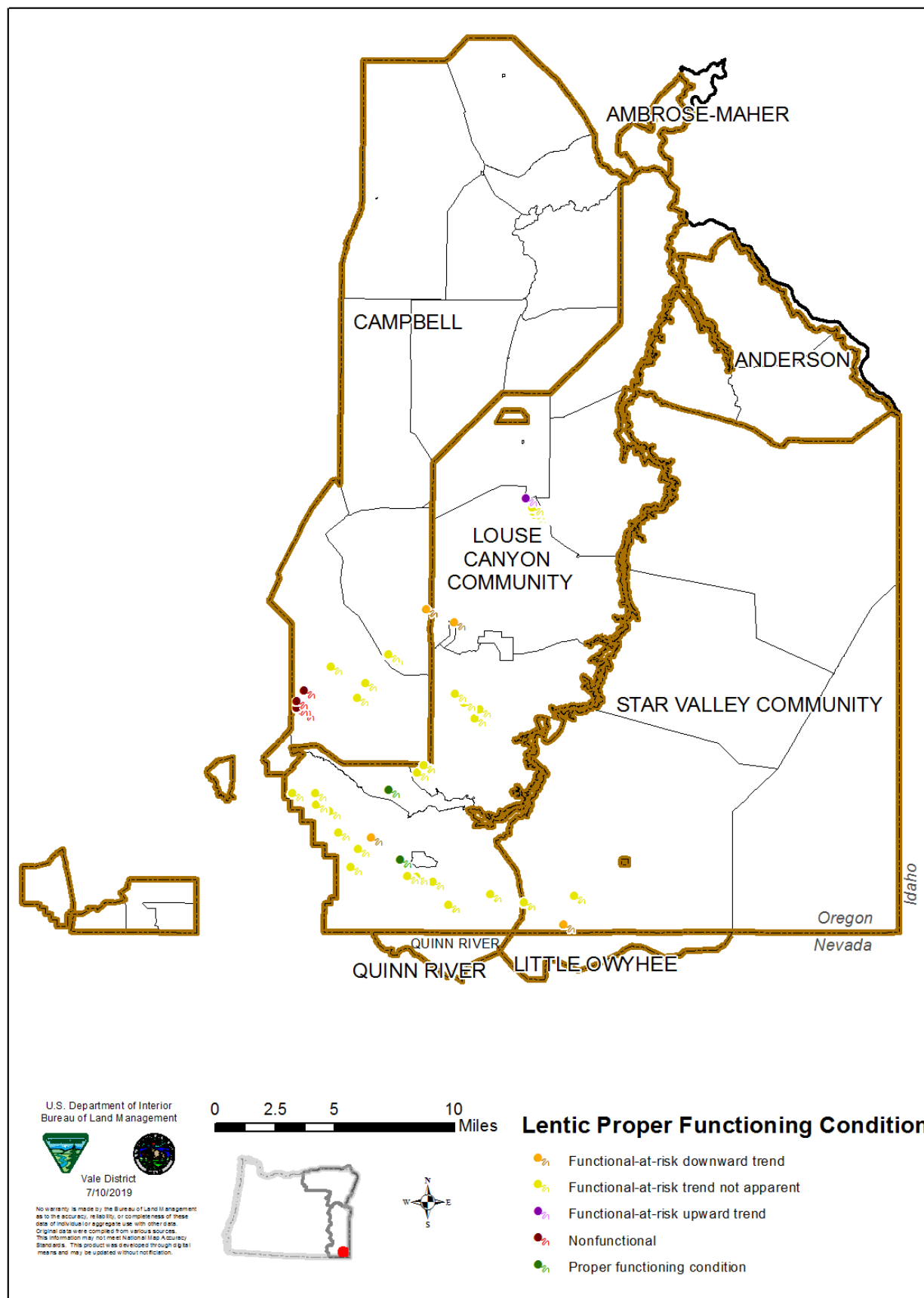


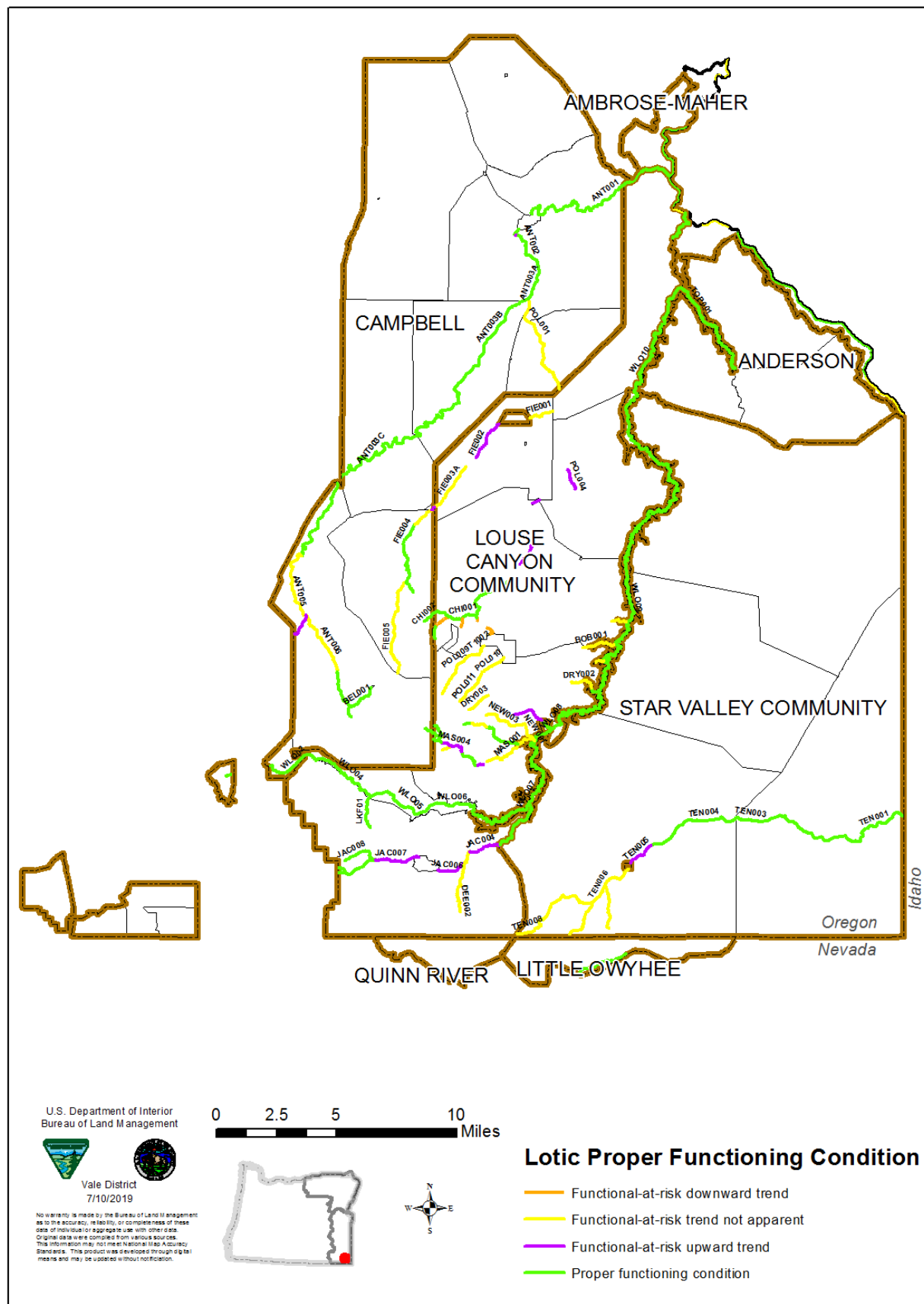


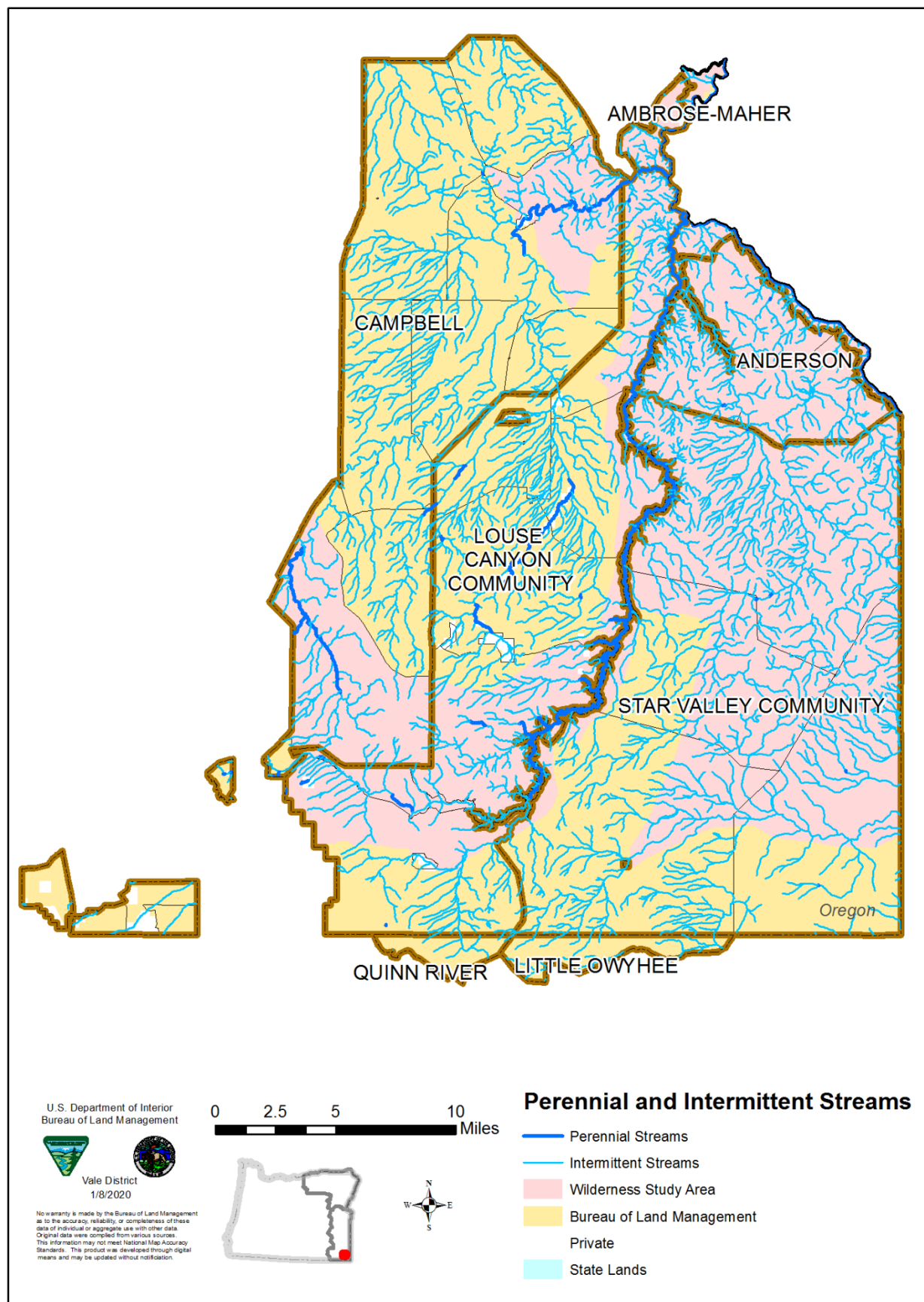


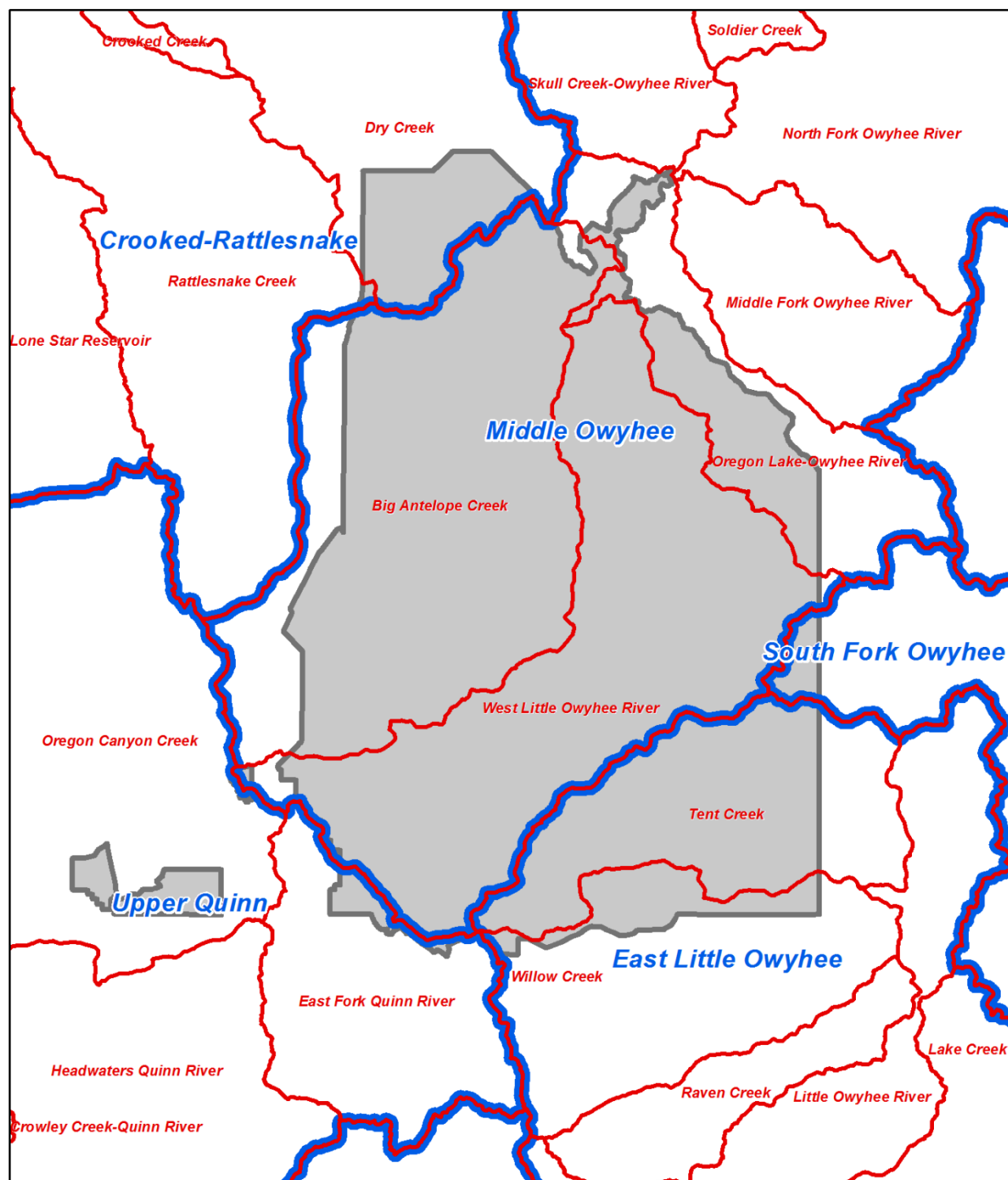












U.S. Department of Interior
Bureau of Land Management



Vale District
1/9/2020

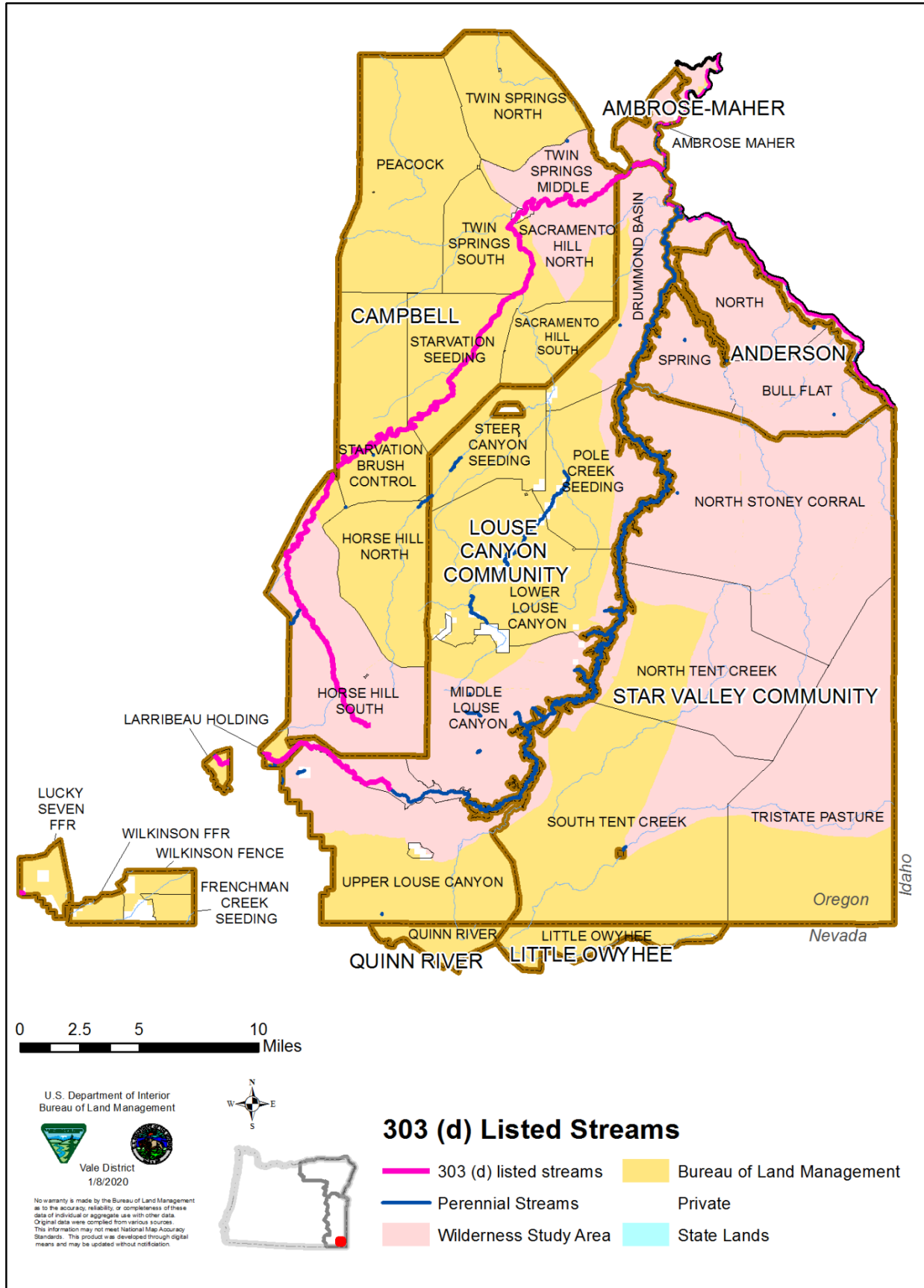
No warranty is made by the Bureau of Land Management as to the accuracy, reliability, or completeness of these data of individual or aggregate use with other data. Original data were compiled from various sources. This information may not meet National Map Accuracy Standards. This product was developed through digital means and may be updated without notification.

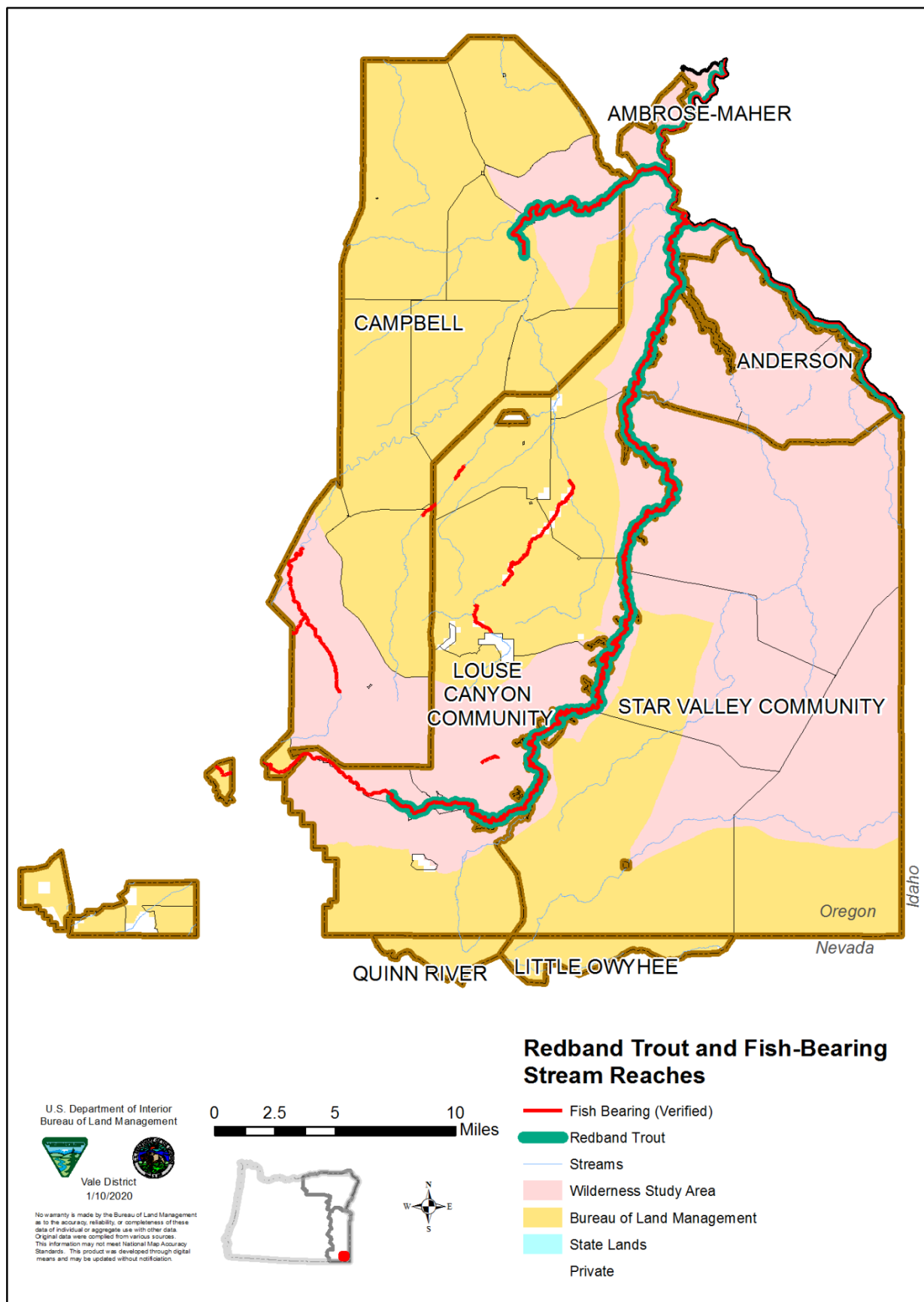
0 2.5 5 10 Miles

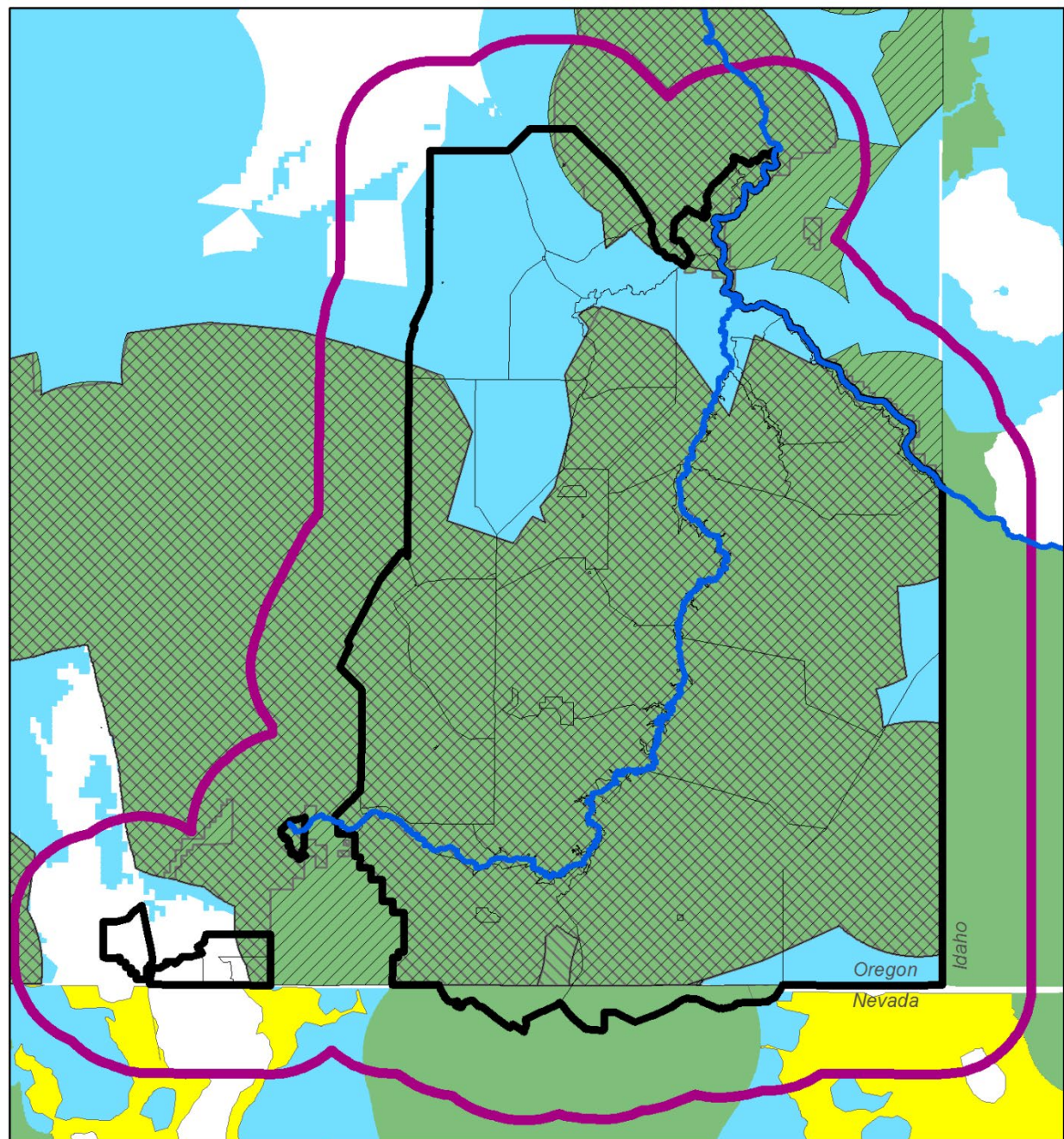


Watersheds and Subbasins

- Watersheds (10-digit, 5th level)
- Subbasins (8-digit, 4th level)
- Louse Canyon GMA





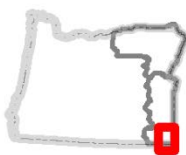


0 2.5 5 10
Miles

U.S. Department of Interior
Bureau of Land Management



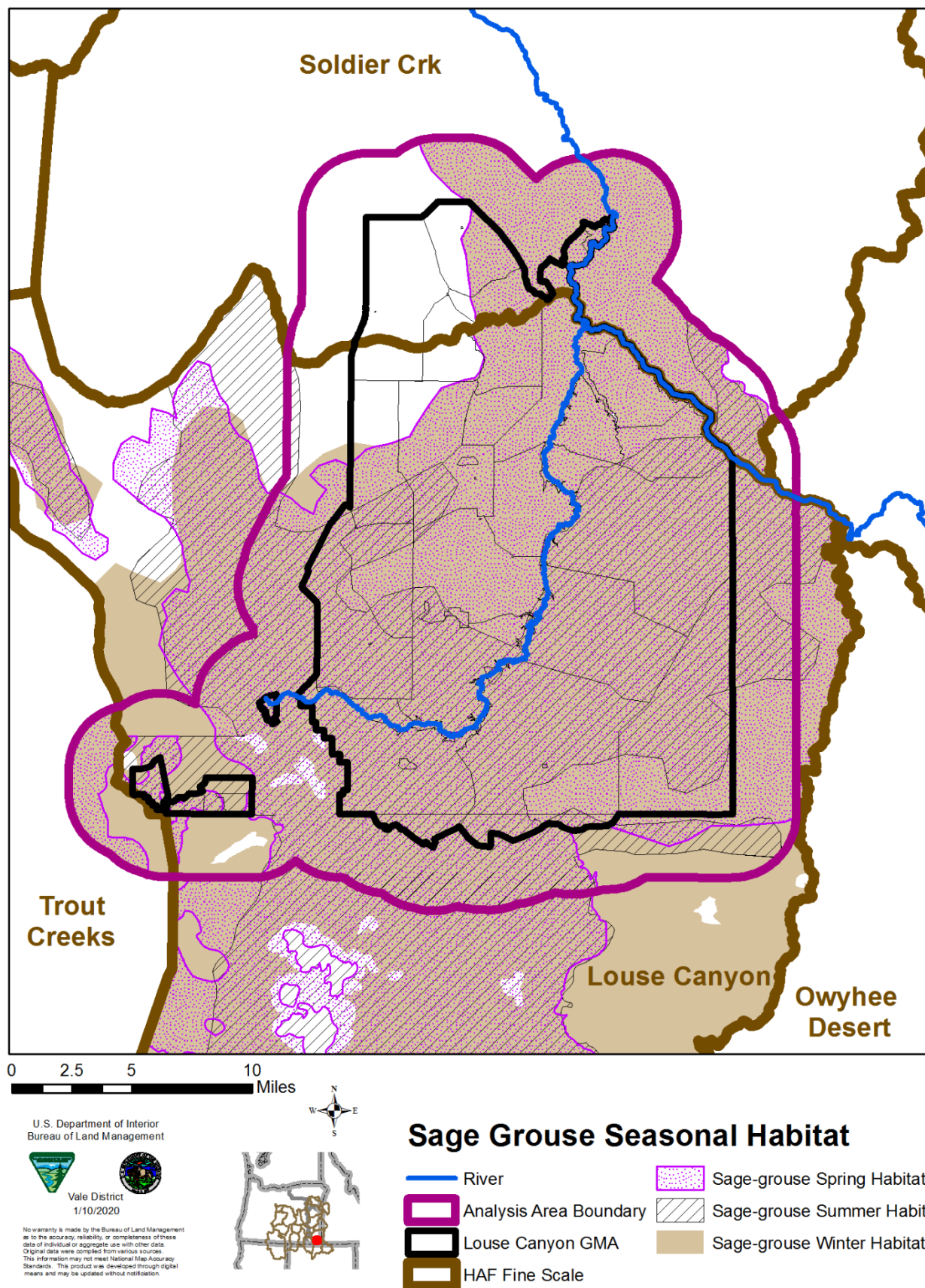
Vale District
1/10/2020

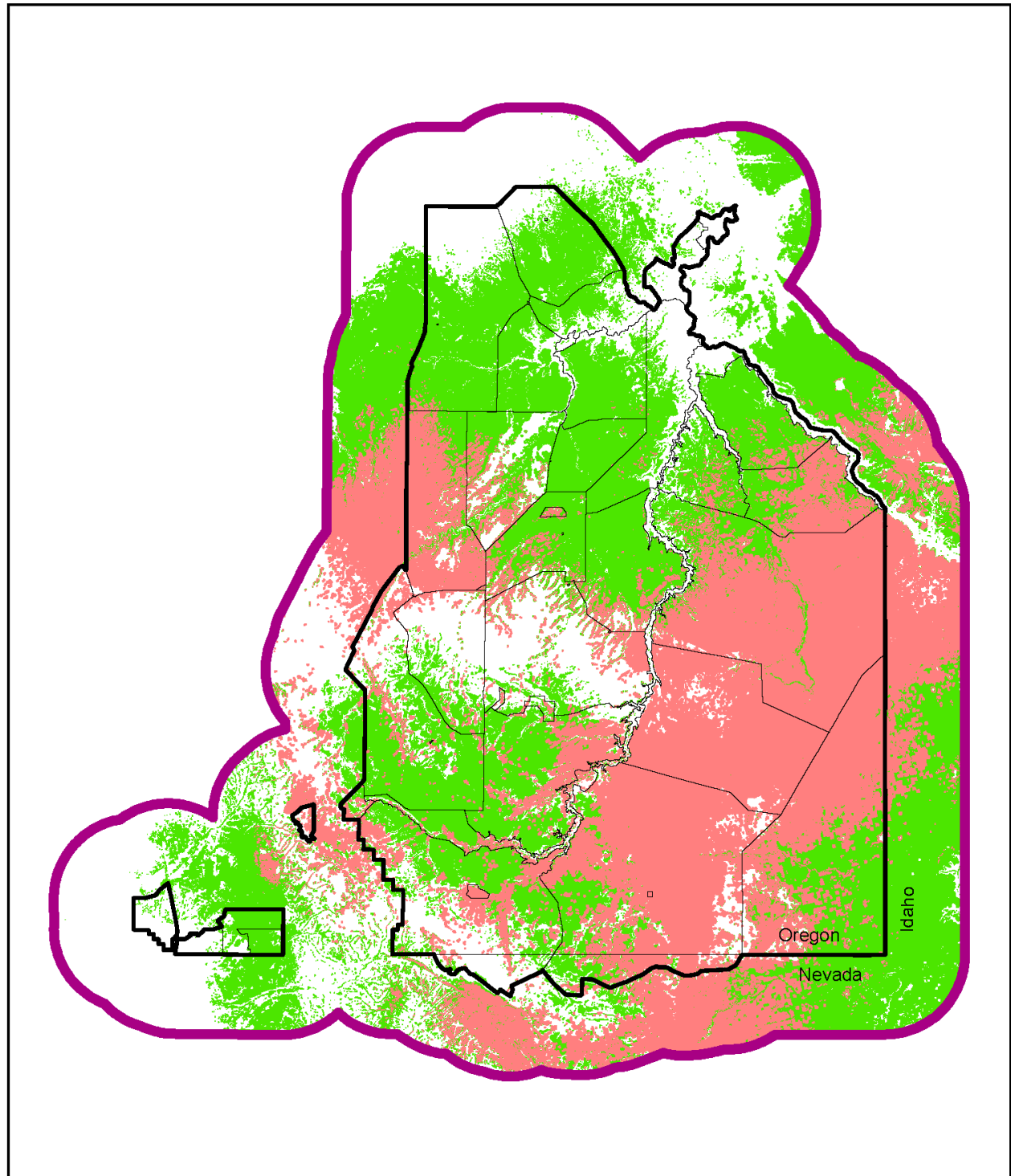


Greater Sage-Grouse Habitat and Sagebrush Focal Areas

- River
- Louse Canyon GMA
- Analysis Area Boundary
- Pastures
- Oregon PACs - Priority Areas of Conservation
- Important Habitat Management Area
- Other Habitat Management Area
- General Habitat Management Area (GHMA) in
- General Habitat Management Area
- Priority Habitat Management Area
- Priority Habitat Management Area (PHMA) in S

No warranty is made by the Bureau of Land Management as to the accuracy, reliability, or completeness of these data of individual or aggregate use with other data. Original data were compiled from various sources. This information may not meet National Map Accuracy Standards. This product was developed through digital means and may be updated without notification.





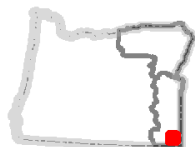
U.S. Department of Interior
Bureau of Land Management



Vale District
5/20/2020

No warranty is made by the Bureau of Land Management as to the accuracy, reliability, or completeness of these data of individual or aggregate use with other data. Original data were compiled from various sources. This information may not meet National Map Accuracy Standards. This product was developed through digital means and may be updated without notification.

0 2.5 5 10 Miles

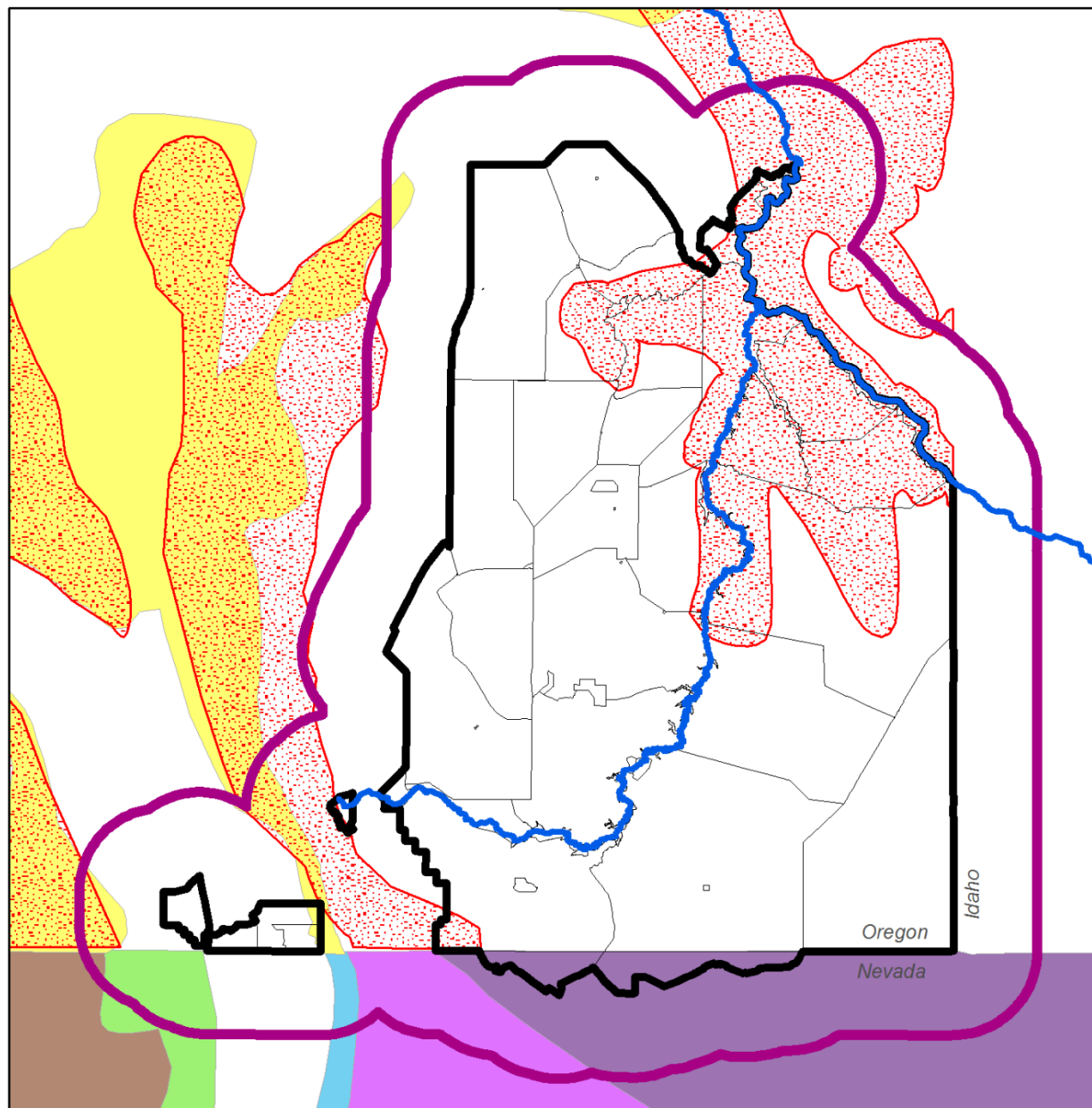


Pygmy Rabbit Habitat

- Analysis Area Boundary
- Louse Canyon GMA
- Pastures

University of Idaho Pygmy Rabbit Model

- Suitable Habitat (0.31 - 0.46)
- Primary Habitat (0.47 - 0.88)



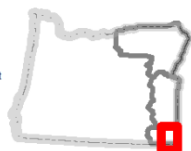
0 2.5 5 10
Miles

U.S. Department of Interior
Bureau of Land Management



Vale District
1/10/2020

No warranty is made by the Bureau of Land Management as to the accuracy, reliability, or completeness of these data of individual or aggregate use with other data. Original data were compiled from various sources. This information may not meet National Map Accuracy Standards. This product was developed through digital means and may be updated without notification.



Big Game Habitat

- River
- Pastures
- Louse Canyon GMA
- Analysis Area Boundary
- Bighorn Occupied Habitat

Mule Deer Habitat

- Agricultural
- Crucial Winter
- Limited Use
- Summer Range
- Winter Range
- Year-round

