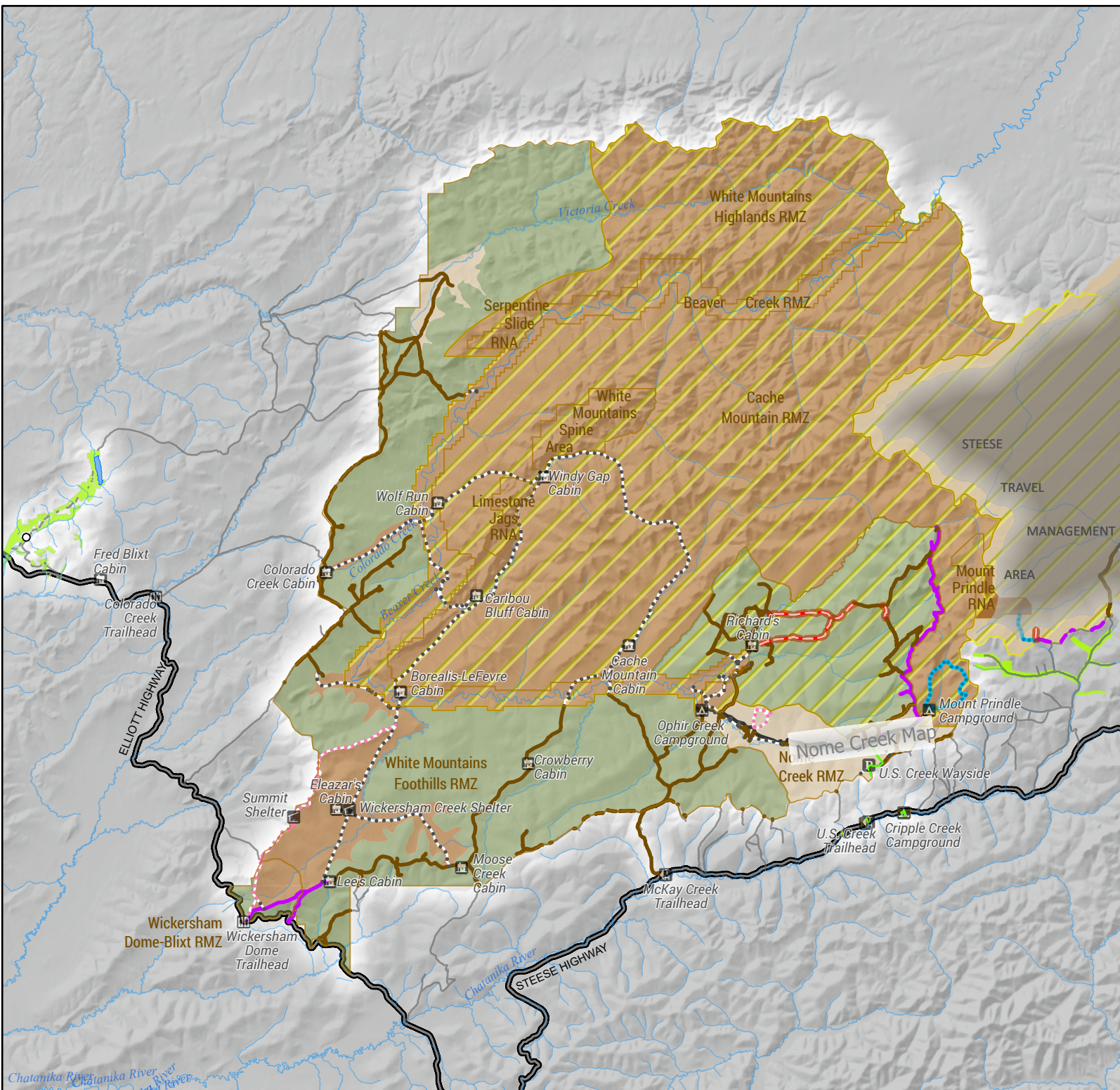




White Mountains - Approved Travel Management - Summer

11/7/2022

U.S. DEPARTMENT OF THE INTERIOR | BUREAU OF LAND MANAGEMENT | ALASKA | EASTERN INTERIOR FIELD OFFICE



Recreation Cabin

Campground

Group Shelter

Interpretive Site

Toilet

Trail Head

Open to all modes of motorized and non-motorized travel.

Open to licensed street-legal vehicles. Open to all modes of non-motorized travel. (Fred Blixt, Cripple Creek, & U.S. Creek)

Open to OHVs weighing 1,500 lbs or less curb weight and a maximum width of 64 inches.

Open to all modes of non-motorized travel.

Open to OHVs weighing 1,000 lbs or less curb weight and a maximum width of 50 inches. Open to all modes of non-motorized travel.

Open to all modes of non-motorized travel.

Open to class 1, 2, and 3 Ebikes. Open to all modes of non-motorized travel.

Proposed: Open to all modes of non-motorized travel.

Proposed: Open to OHVs weighing 1,000 lbs or less curb weight and a maximum width of 50 inches. Open to all modes of non-motorized travel.

Non-BLM Road

Cross country travel allowed for OHVs 1,500 lbs or less curb weight and maximum width of 64 inches.

Cross country travel allowed for OHVs 1,000 lbs or less curb weight and maximum width of 50 inches.

No OHV Cross Country Travel Allowed. All OHVs are limited to designated routes, if present.

No Summer Use of OHVs

No Domestic Sheep, Goats, or Camelids Allowed.

Recreation Management Zone (RMZ)

No warranty is made by the Bureau of Land Management as to the accuracy, reliability, or completeness of these data for individual or aggregate use with other data. Original data were compiled from various sources. This information may not meet National Map Accuracy Standards. This product was developed through digital means and may be updated without notification.