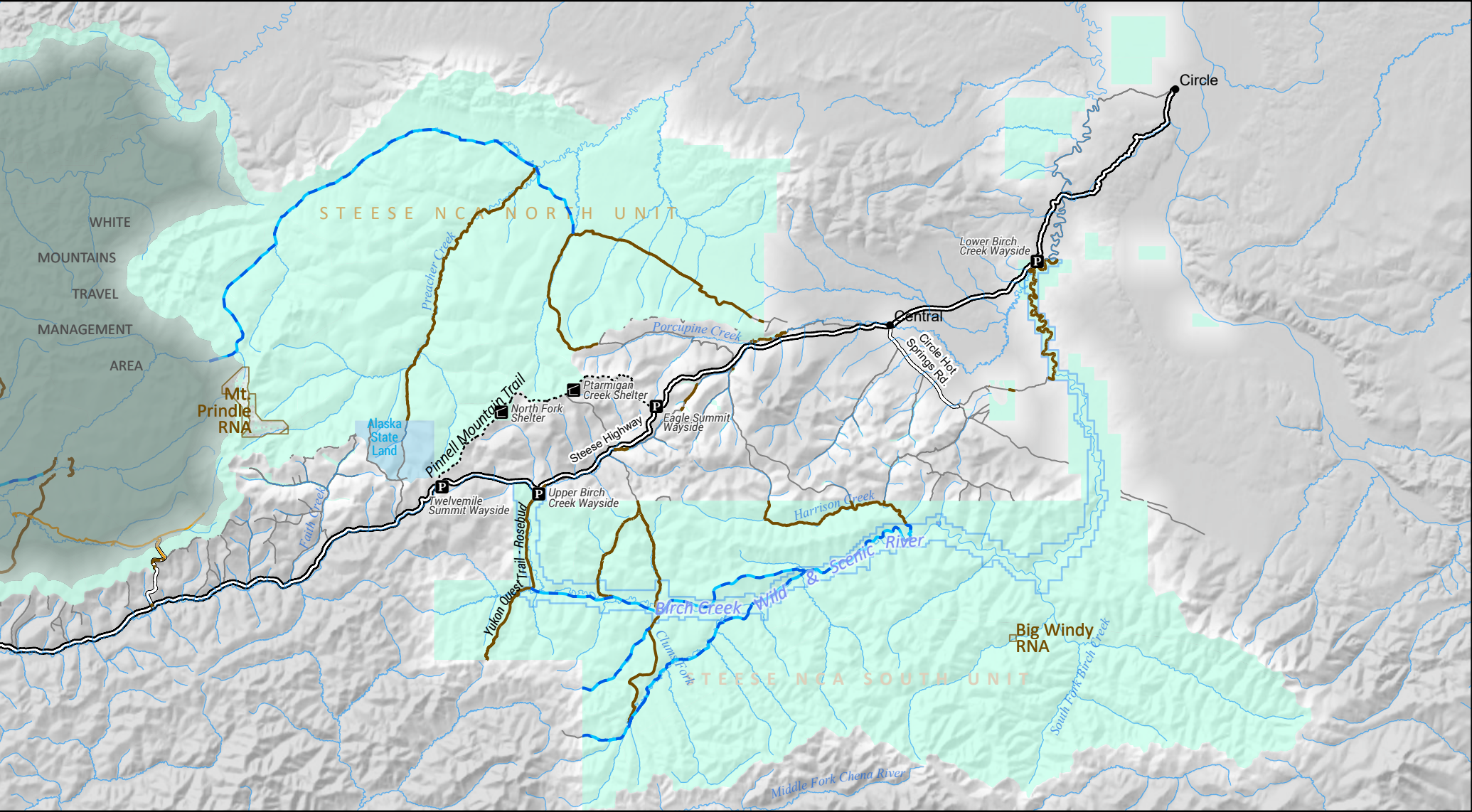




# Steese Area - Approved Travel Management - Winter

5/19/2022

U.S. DEPARTMENT OF THE INTERIOR | BUREAU OF LAND MANAGEMENT | ALASKA | EASTERN INTERIOR FIELD OFFICE



Group Shelter

Interpretive Site

Open to snowmobiles weighing 1,000 lbs or less curb weight and a maximum width of 50 inches. Open to all modes of non-motorized travel.

Proposed: Open to snowmobiles weighing 1,000 lbs or less curb weight and a maximum width of 50 inches. Open to all modes of non-motorized travel.

Open to all modes of non-motorized travel.

Routes not managed by BLM

TMZs 1,2,3, & 4: Cross-country travel is allowed for snowmobiles 1,000 lbs or less curb weight and a maximum width of 50 inches. All other OHVs are limited to managed routes, if present

TMZ 5: RNA - Cross country travel allowed for snowmobiles 1,000 lbs or less curb weight and a maximum width of 50 inches. No travel by snowmobiles over exposed soil and/or vegetation within RNAs.

No warranty is made by the Bureau of Land Management as to the accuracy, reliability, or completeness of these data for individual or aggregate use with other data. Original data were compiled from various sources. This information may not meet National Map Accuracy Standards. This product was developed through digital means and may be updated without notification.