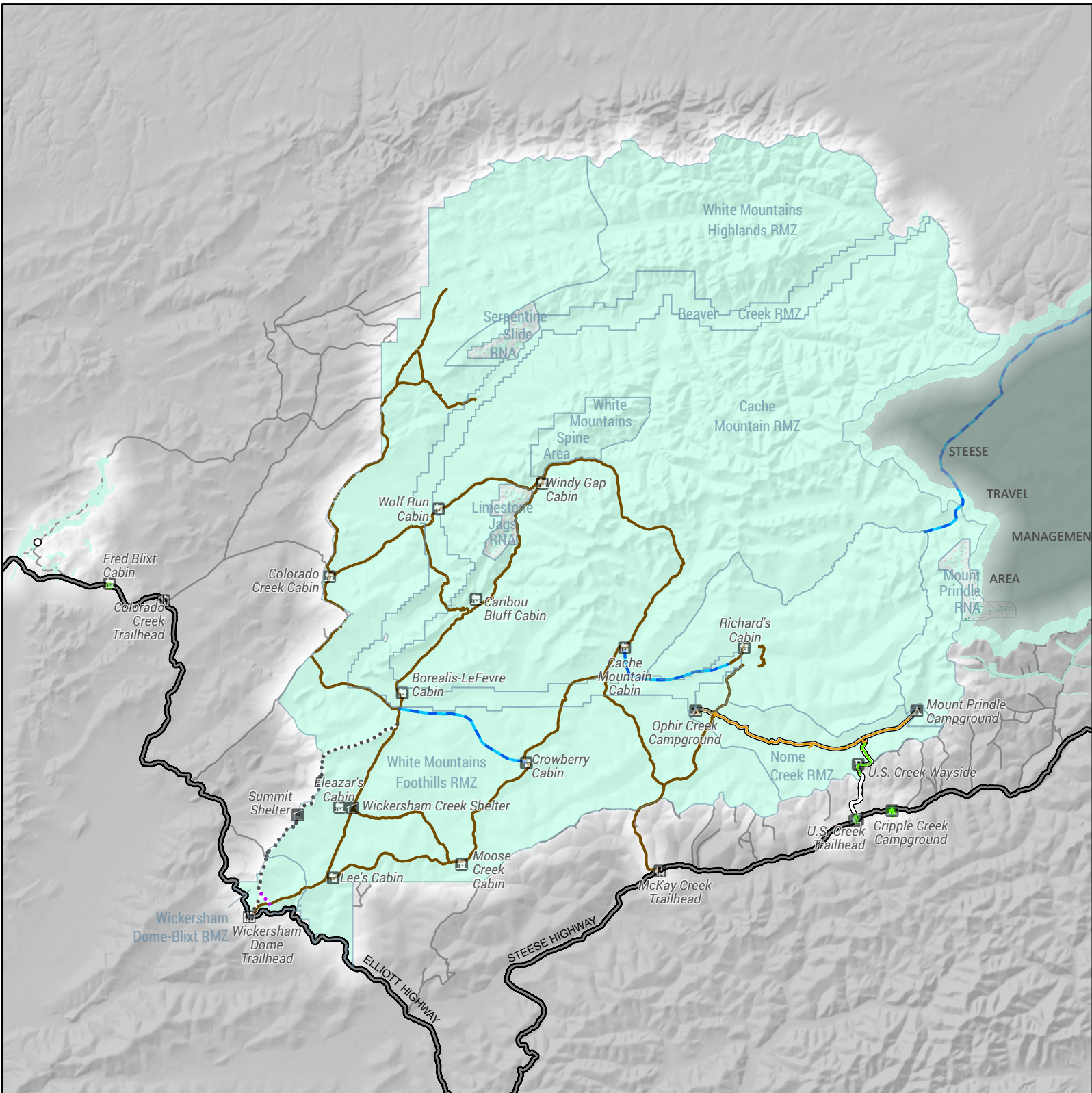




# White Mountains - Approved Travel Management Plan - Winter

5/27/2022

U.S. DEPARTMENT OF THE INTERIOR | BUREAU OF LAND MANAGEMENT | ALASKA | EASTERN INTERIOR FIELD OFFICE



Recreation Cabin

Campground

Group Shelter

Interpretive Site

Toilet

Trail Head

Open to all modes of motorized and non-motorized travel. Maintained in winter. (Fred Blixt, Cripple Creek & U.S. Creek)

Open to OHVs weighing 1,000 pounds or less curb weight and a maximum width of 50 inches. Open to all modes of non-motorized travel (Winter Maintained)

Open to OHVs weighing 1,000 lbs or less curb weight and a maximum width of 50 inches. Open to all modes of non-motorized travel (Not Maintained in Winter)

Open to all modes of non-motorized travel excluding class 1, 2, and 3 E-bikes.

Open to all modes of non-motorized travel excluding class 1, 2, and 3 E-bikes. Maintained in winter.

Proposed: Open to OHVs weighing 1,000 pounds or less curb weight and a maximum width of 50 inches. Open to all modes of non-motorized travel (Winter Maintained)

Non-BLM Road

Cross country travel allowed for OHVs 1,000 lbs or less curb weight and a maximum width of 50 inches.

Research Natural Areas (RNAs) - Cross country travel allowed for OHVs 1,000 lbs or less curb weight and a maximum width of 50 inches. No travel by snowmobiles over exposed soil and/or vegetation.

Recreation Management Zone (RMZ)

No warranty is made by the Bureau of Land Management as to the accuracy, reliability, or completeness of these data for individual or aggregate use with other data. Original data were compiled from various sources. This information may not meet National Map Accuracy Standards. This product was developed through digital means and may be updated without notification.