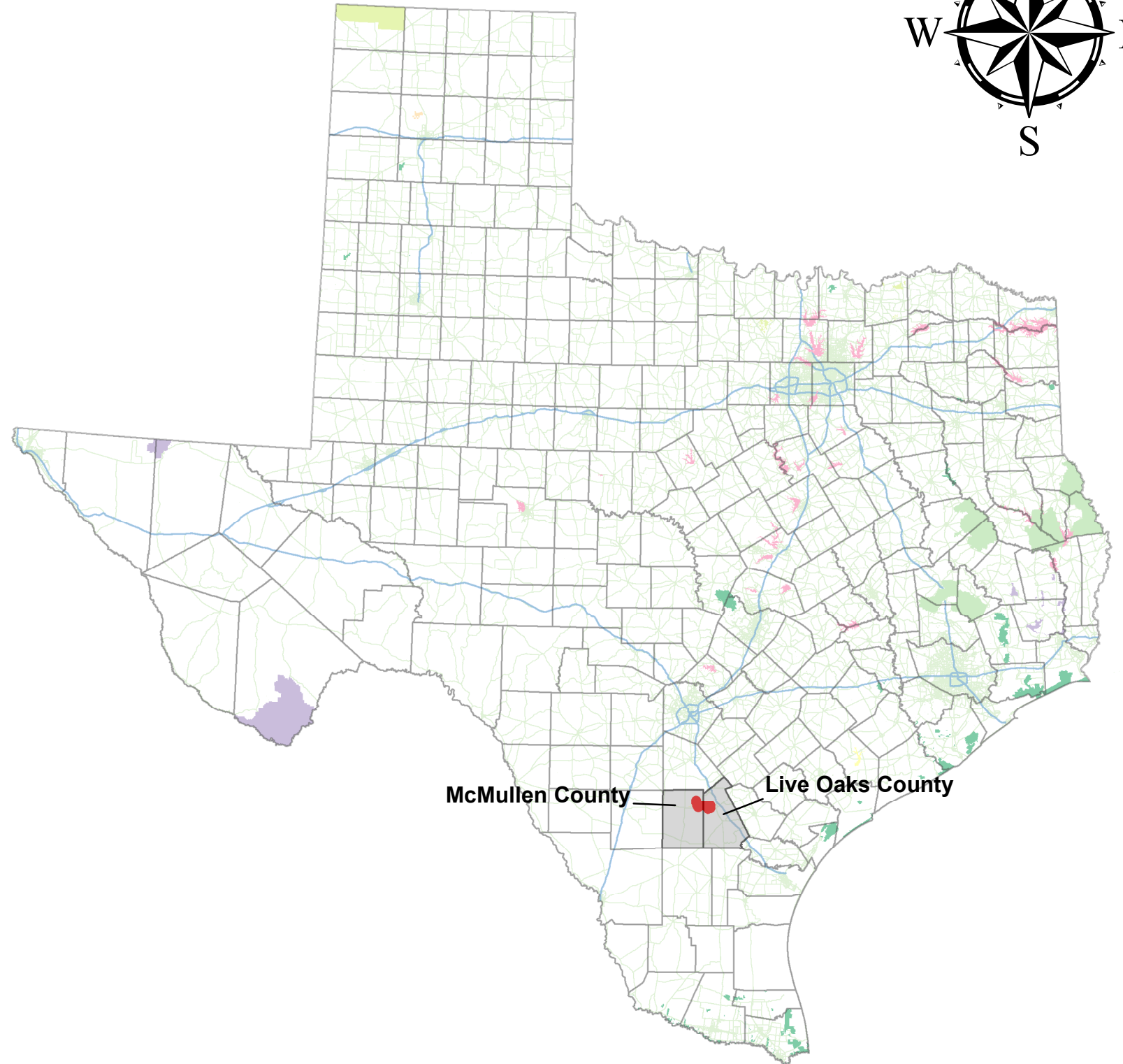
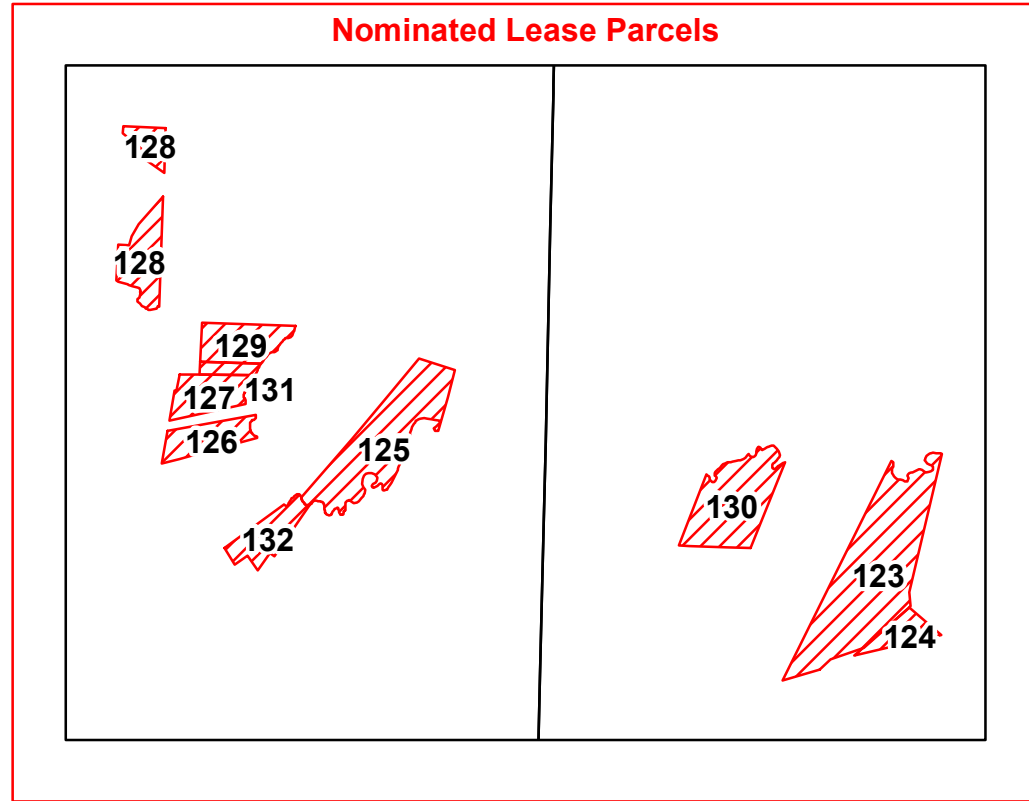
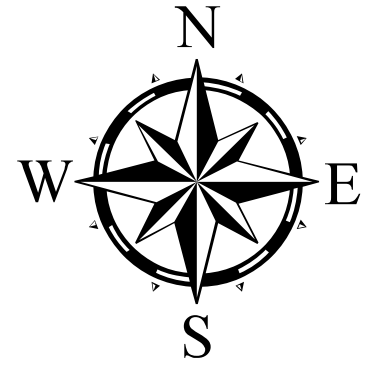








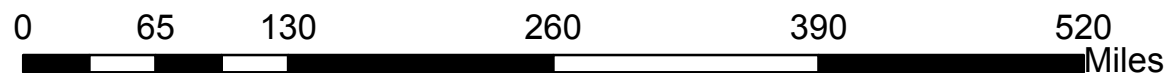
BLM New Mexico Competitive Oil and Gas Lease Sale December 2018 Texas Nominated Lease Sale Parcels



-  Texas Nominated Lease Sale Parcels 12/2018
-  Interstates
-  US Fish and Wildlife Service
-  Bureau of Reclamation
-  Native American Reservation
-  National Park Service
-  USFS Nat'l Forests
-  BLM Surface
-  Nat'l Grasslands
-  US Army Corps of Engineers

McMullen County — Live Oaks County

No warranty is made by the Bureau of Land Management as to the accuracy, reliability, or completeness of these data for individual use or aggregate use with other data, or for purposes not intended by BLM. Spatial information may not meet National Map Accuracy Standards. This information may be updated without notification.



1:149,600



Bureau of Land Management
Oklahoma Field Office
201 Stephenson Pkwy, STE. 1200
Norman, Ok 73072