



# Coastal Plain Oil and Gas Leasing Program EIS

## THE PROJECT

The Bureau of Land Management is engaging communities across Alaska in person to gather relevant comments, concerns and/or issues pertaining to the development of the Coastal Plain Oil and Gas Leasing Program Environmental Impact Statement (EIS). The EIS will serve to inform the BLM's implementation of the Tax Act, including the requirement to hold not fewer than two lease sales area-wide. It may also inform post-lease activities, including seismic and drilling exploration, development, and transportation of oil and gas in and from the Coastal Plain. Specifically, the EIS will consider and analyze the potential environmental impacts of various leasing alternatives, including the areas to offer for sale, and the terms and conditions (i.e., lease stipulations and best management practices) to be applied to leases and associated oil and gas activities to properly balance oil and gas development with existing uses and conservation of surface resources, and to limit the footprint of production and support facilities on Federal lands to no more than 2,000 surface acres. The area comprising the Coastal Plain includes approximately 1.6 million acres within the approximately 19.3 million-acre Arctic National Wildlife Refuge

## SCOPING COMMENTS

The scoping period provides an opportunity for people who could be affected by the proposed action to express their views and concerns, and to offer suggestions. The most effective comments include specific details regarding issues or concerns and provide rationale for the concern or suggestion. Ideas for effective scoping comments include:

- What are your specific concerns about a resource – and why?
- Do you know of any geographic areas of concern for a specific resource – and why?
- Do you have any ideas for alternatives to analyze?
- Give us ideas for mitigation measures or new technologies to consider in an alternative.
- Let us know about important information available in your community.

## HOW TO COMMENT

There are several ways to submit a comment on the Coastal Plain Oil and Gas Leasing Program EIS:

- **Speak** your comment at today's public meeting
- **Submit your comment via comment form** at the public meeting or to the address below
- **Submit your comment via webform:** <https://goo.gl/HVo5Mj>
- **E-mail your comment** to: [blm\\_ak\\_coastalplain\\_EIS@blm.gov](mailto:blm_ak_coastalplain_EIS@blm.gov)
- **Mail your comment** to:

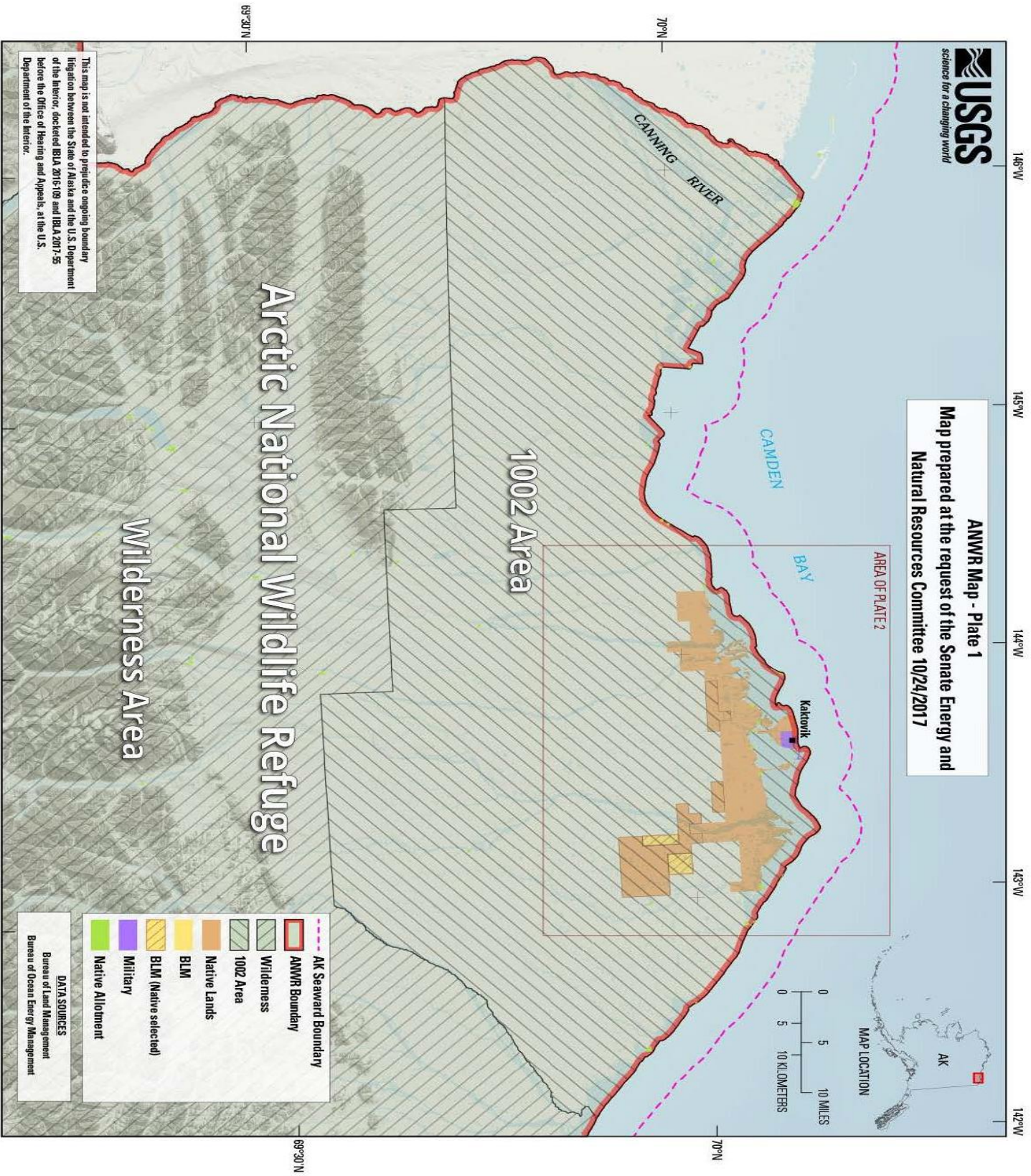
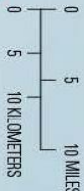
Attn: Coastal Plain Oil and Gas Leasing Program EIS  
222 West 7th Avenue, #13  
Anchorage, Alaska 99513



**ANWR Map - Plate 1**  
Map prepared at the request of the Senate Energy and  
Natural Resources Committee 10/24/2017

AREA OF PLATE 2

MAP LOCATION



This map is not intended to prejudice ongoing boundary litigation between the State of Alaska and the U.S. Department of the Interior, docketed BIA 2015-09 and BIA 2017-55 before the Office of Hearing and Appeals, at the U.S. Department of the Interior.

	AK Seaward Boundary
	ANWR Boundary
	Wilderness
	1002 Area
	Native Lands
	BLM
	BLM (Native selected)
	Military
	Native Allotment

DATA SOURCES  
Bureau of Land Management  
Bureau of Ocean Energy Management

# Arctic National Wildlife Refuge

## 1002 Area

## Wilderness Area

146°W 145°W 144°W 143°W 69°30'N 70°N