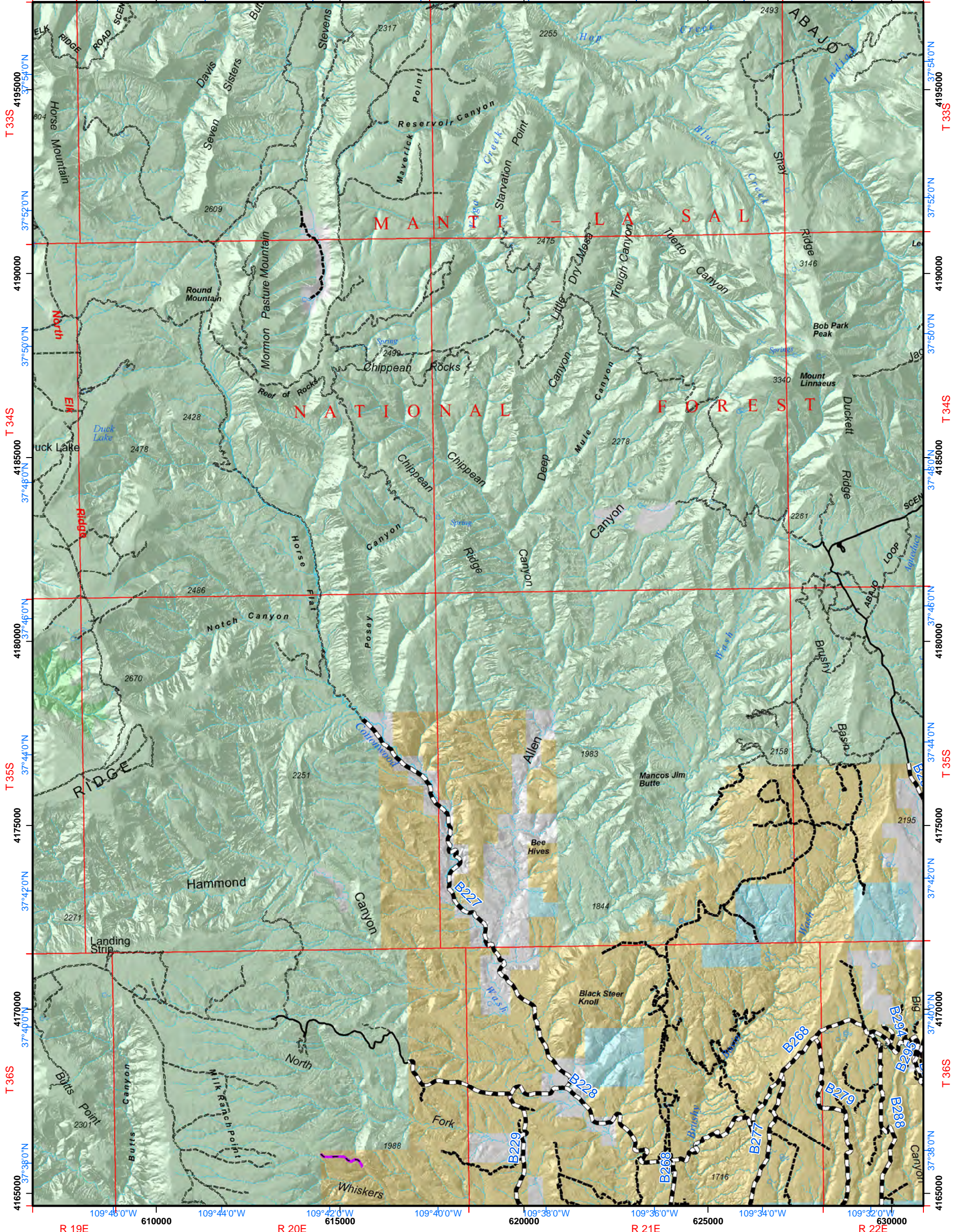


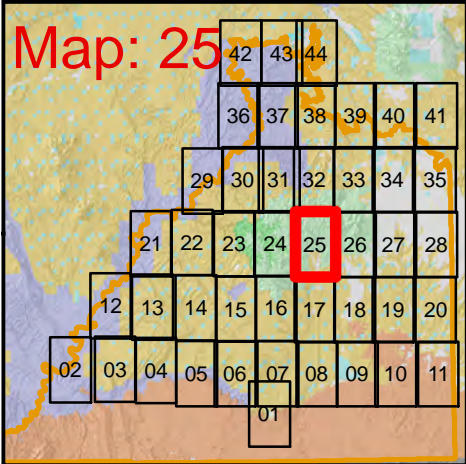
Monticello Field Office Travel Map

R 19E 610000 R 20E 615000 R 21E 620000 R 22E 630000

109°46'0"W 109°44'0"W 109°42'0"W 109°40'0"W 109°38'0"W 109°36'0"W 109°34'0"W 109°32'0"W



Index Map



Date: 9/16/2014

- DESIGNATED ROUTES**
- Streams
 - State Highway
 - B Road (maintained)
 - D Road (not maintained)
 - City Road
 - Seasonal D Road
 - Motorcycle Trail
 - ATV/Motorcycle Trail
 - Mechanized Trail
 - Hiking Trail

All routes not on this map are not designated for motorized travel. Motorized travel on non-designated routes will be subject to fines.

- Field Office Boundary
 - BLM Natural Area
 - Wilderness Study Area
- Land Status**
- Bureau of Land Management (BLM)
 - US Forest Service (USFS)
 - USFS Wilderness Area
 - National Park Service (NPS)
 - Indian Reservation (IR)
 - State
 - Private



Bureau of Land Management Monticello Field Office

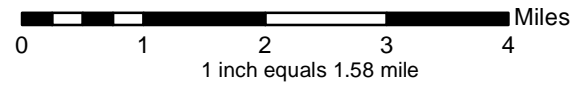
Information contained in this map is the best available data at the time of publishing. Additions and corrections to the data will be included as maintenance and quality control is performed.

Roads shown on non-BLM land are depicted for informational purposes only.

No warranty is made by the Bureau of Land Management as to the accuracy, reliability, or completeness of these data for individual use or aggregate use with other data.



1:100,000



No cross-country travel is allowed in the Monticello Field Office.